

MIMOSA





Mimosa Mirthmakers Draft Picks

**1-Eddie Foster 2-Joe Birmingham 2a-George Kahler
3-Jimmy Walsh 4-Ray Boyd 5-Joe Hovlik 6-Bill Cunningham
7-Marc Hall 8-Wingo Anderson
XFA-Mysterious Walker, Herman Bronkie, Dutch Hinrichs,
John Castle, Jack Hardy**

Mimosa Mirthmaker Starting Lineup for Opening Day 1911



F. CLARKE, PITTSBURGH



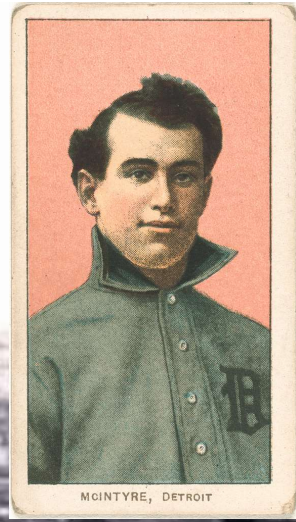
JIM WALSH
R. F.—Boston Red Sox
182



MILLER-BOSTON-NAT.



OF THE CINCINNATI NATIONALS



MCINTYRE, DETROIT



SCHAEFER, DETROIT



Curtis, Boston Nationals

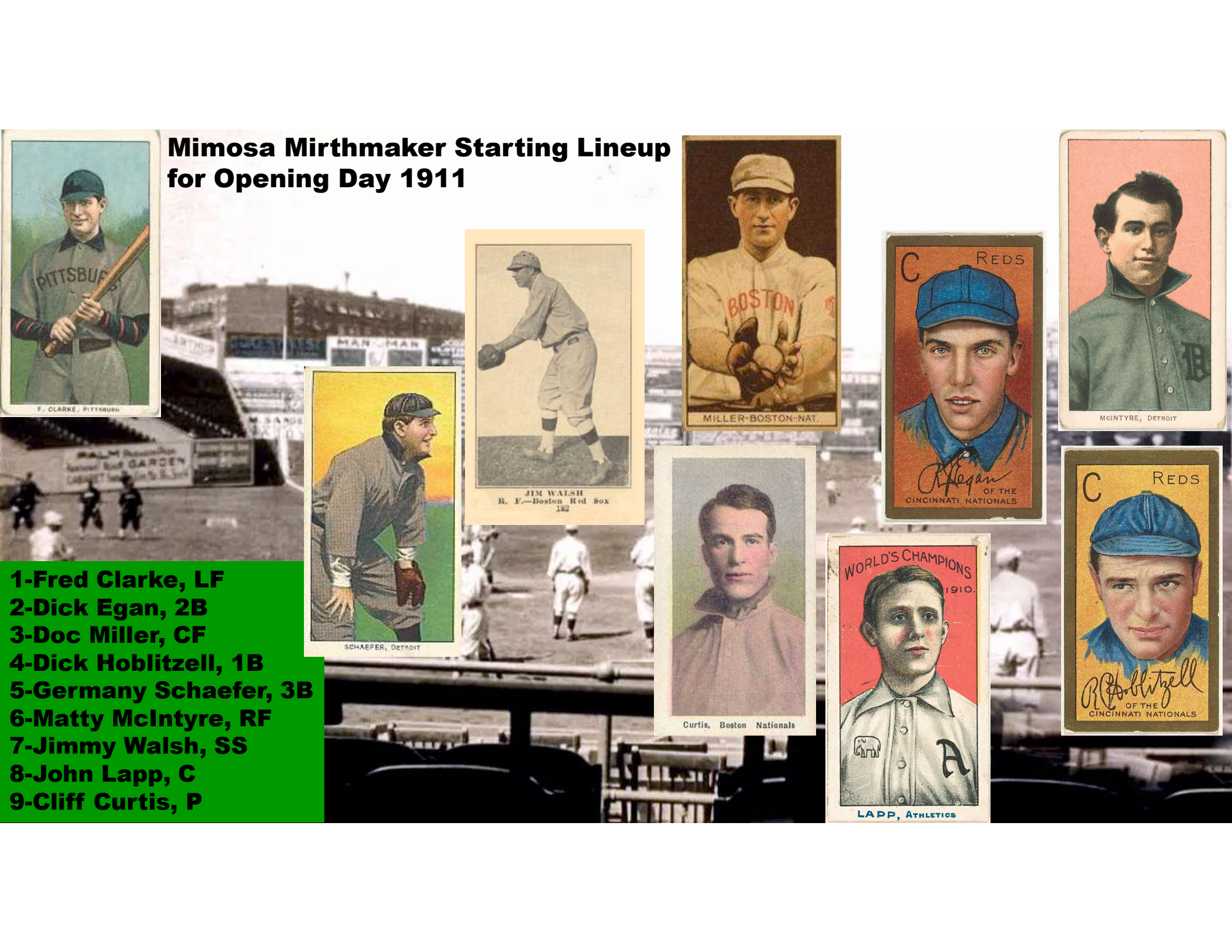


LAPP, ATHLETICS



OF THE CINCINNATI NATIONALS

- 1-Fred Clarke, LF
- 2-Dick Egan, 2B
- 3-Doc Miller, CF
- 4-Dick Hoblitzell, 1B
- 5-Germany Schaefer, 3B
- 6-Matt McIntyre, RF
- 7-Jimmy Walsh, SS
- 8-John Lapp, C
- 9-Cliff Curtis, P



14 Pitchers			Tm	Lg	W	L	PCT	SV	ERA	G	GS	CG	SHO	QS	IP	H	R	ER	HR	SO	BB
Birmingham, J.	MI	TCBA	0	0	-	0	-	1	0	0	0	0	0	0	.0	0	0	0	0	0	0
Reulbach, E.	MI	TCBA	9	13	.409	2	2.88	35	23	9	1	12	190.2	187	86	61	0	42	52		
Kahler, G.	MI	TCBA	7	5	.583	1	3.10	26	9	5	2	6	110.1	87	43	38	3	37	63		
Powell, J.	MI	TCBA	9	11	.450	1	3.98	25	19	8	2	9	140.1	140	73	62	2	31	42		
Anderson, W.	MI	TCBA	1	6	.143	0	4.11	10	6	2	0	2	50.1	57	34	23	0	48	20		
Boyd, R.	MI	TCBA	4	10	.286	1	4.26	20	16	3	2	10	116.1	133	62	55	2	44	38		
Richie, L.	MI	TCBA	7	11	.389	3	4.39	45	16	2	0	4	160.0	157	99	78	2	82	61		
Pelty, B.	MI	TCBA	5	17	.227	1	5.26	28	25	5	1	7	172.2	226	127	101	2	53	84		
Hovlik, J.	MI	TCBA	0	0	-	0	5.40	20	0	0	0	0	28.1	38	29	17	0	8	12		
Curtis, C.	MI	TCBA	6	28	.176	1	5.77	41	36	10	2	6	237.0	297	192	152	4	87	148		
Walker, M.	MI	TCBA	0	1	.000	0	6.14	29	0	0	0	0	44.0	56	40	30	1	13	26		
Hall, M.	MI	TCBA	0	3	.000	0	6.16	18	4	0	0	1	49.2	74	38	34	0	29	33		
Hinrichs, D.	MI	TCBA	0	1	.000	0	7.75	25	0	0	0	0	40.2	66	41	35	0	19	29		
Smith, L.	MI	TCBA	0	0	-	2	10.61	4	0	0	0	0	9.1	19	11	11	0	4	3		
Mimosa Mirthmakers			48	106	.312	12	4.65	327	154	44	10	57	1349.2	1537	875	697	16	497	611		
14 Pitchers			Tm	Lg	SUP/9	R/9	ERA	BF/9	BR/9	H/9	BB/9	SO/9	HR/9	ERPT	OBA	BF	BR	IBB	HB	WP	BK
Birmingham, J.	MI	TCBA	-	-	-	-	-	-	-	-	-	-	-	-	-	0	0	0	0	0	0
Reulbach, E.	MI	TCBA	3.4	4.06	2.88	38.4	11.5	8.8	2.3	2.0	.00	6.5	.258	813	243	3	7	5	1		
Kahler, G.	MI	TCBA	2.5	3.51	3.10	39.0	12.2	7.1	5.0	3.0	.24	1.1	.214	478	150	2	2	5	0		
Powell, J.	MI	TCBA	4.6	4.68	3.98	39.1	12.1	9.0	2.7	2.0	.13	-12.3	.256	609	188	0	6	0	0		
Anderson, W.	MI	TCBA	1.1	6.08	4.11	40.9	14.1	10.2	3.6	8.6	.00	-5.2	.281	229	79	0	2	1	0		
Boyd, R.	MI	TCBA	3.2	4.80	4.26	39.8	13.6	10.3	2.9	3.4	.15	-13.8	.292	515	176	0	5	0	0		
Richie, L.	MI	TCBA	3.7	5.57	4.39	39.8	12.7	8.8	3.4	4.6	.11	-21.4	.251	707	225	0	7	3	0		
Pelty, B.	MI	TCBA	2.8	6.62	5.26	43.0	16.7	11.8	4.3	2.8	.10	-39.9	.323	825	320	2	12	3	0		
Hovlik, J.	MI	TCBA	.0	9.21	5.40	45.7	16.2	12.1	3.8	2.5	.00	-7.0	.292	144	51	0	1	0	0		
Curtis, C.	MI	TCBA	3.0	7.29	5.77	44.0	17.6	11.3	5.6	3.3	.15	-68.1	.308	1158	463	0	18	4	0		
Walker, M.	MI	TCBA	.0	8.18	6.14	43.0	17.2	11.5	5.3	2.7	.20	-14.4	.315	210	84	0	2	0	0		
Hall, M.	MI	TCBA	.9	6.89	6.16	46.0	19.8	13.4	5.8	5.3	.00	-16.4	.351	254	109	1	3	1	0		
Hinrichs, D.	MI	TCBA	.0	9.07	7.75	46.9	21.2	14.6	6.4	4.2	.00	-20.6	.371	212	96	0	1	0	0		
Smith, L.	MI	TCBA	.0	10.61	10.61	47.3	21.2	18.3	2.9	3.9	.00	-7.7	.422	49	22	0	0	0	1		
Mimosa Mirthmakers			2.8	5.83	4.65	41.4	14.7	10.2	4.0	3.3	.11	-219.2	.286	6203	2206	8	66	22	2		

30 Players	Tm	Lg	AVG	G	AB	R	H	2B	3B	HR	TB	RBI	SO	BB	ASB	SB	CS	SBP	GDP
Miller, D.	MI	TCBA	.312	129	504	59	157	29	5	4	208	67	39	22	29	18	11	62.1	4
Bronkie, H.	MI	TCBA	.264	36	87	16	23	0	0	0	23	8	9	16	11	8	3	72.7	3
Hoblitzell, D.	MI	TCBA	.262	154	588	69	154	23	8	0	193	94	44	41	37	32	5	86.5	11
Stephens, J.	MI	TCBA	.249	83	225	17	56	4	2	0	64	14	33	20	2	0	2	.0	3
McIntyre, M.	MI	TCBA	.244	96	320	40	78	11	4	0	97	32	37	34	8	5	3	62.5	8
Hardy, J.	MI	TCBA	.235	13	17	0	4	0	0	0	4	3	2	0	0	0	0	-	0
O'Leary, C.	MI	TCBA	.234	87	218	19	51	7	0	0	58	15	25	15	13	12	1	92.3	4
Egan, D.	MI	TCBA	.233	139	485	78	113	11	5	0	134	26	39	61	55	39	16	70.9	8
Schaefer, G.	MI	TCBA	.226	97	217	28	49	8	3	0	63	12	16	17	14	12	2	85.7	4
Lapp, J.	MI	TCBA	.225	100	275	21	62	5	6	0	79	32	35	32	0	0	0	-	2
Clarke, F.	MI	TCBA	.220	132	422	66	93	17	6	0	122	28	41	62	16	10	6	62.5	2
Birmingham, J.	MI	TCBA	.219	120	347	35	76	11	0	0	87	22	33	15	28	18	10	64.3	6
Smith, L.	MI	TCBA	.204	136	494	34	101	15	1	8	142	56	97	28	0	0	0	-	10
Walsh, J.	MI	TCBA	.204	102	245	20	50	5	2	4	71	27	27	28	5	1	4	20.0	3
Richie, L.	MI	TCBA	.195	45	41	4	8	3	1	0	13	4	10	4	0	0	0	-	0
Castle, J.	MI	TCBA	.190	64	174	9	33	0	0	0	33	10	6	1	9	8	1	88.9	2
Powell, J.	MI	TCBA	.156	25	45	8	7	0	0	0	7	3	6	1	0	0	0	-	2
Boyd, R.	MI	TCBA	.135	20	37	3	5	0	0	0	5	1	6	1	0	0	0	-	0
Kahler, G.	MI	TCBA	.125	26	32	0	4	0	0	0	4	0	4	0	0	0	0	-	0
Hartsel, T.	HH	TCBA	.125	7	16	3	2	0	0	0	2	0	3	2	1	1	0	100.0	0
Bemis, H.	MI	TCBA	.122	23	41	0	5	1	0	0	6	0	6	1	0	0	0	-	0
Curtis, C.	MI	TCBA	.097	41	72	3	7	1	0	0	8	3	20	1	0	0	0	-	2
Pelty, B.	MI	TCBA	.087	28	46	0	4	1	0	0	5	7	7	5	0	0	0	-	0
Reulbach, E.	MI	TCBA	.086	35	58	3	5	0	0	0	5	2	17	3	1	1	0	100.0	0
Anderson, W.	MI	TCBA	.071	10	14	0	1	0	0	0	1	1	0	0	0	0	0	-	0
Foster, E.	MI	TCBA	.064	36	78	2	5	1	0	0	6	5	18	5	0	0	0	-	1
Hall, M.	MI	TCBA	.000	18	12	0	0	0	0	0	0	1	2	0	0	0	0	-	0
Hinrichs, D.	MI	TCBA	.000	25	6	0	0	0	0	0	0	0	1	0	0	0	0	-	0
Walker, M.	MI	TCBA	.000	29	4	0	0	0	0	0	0	0	1	0	0	0	0	-	0
Hovlik, J.	MI	TCBA	.000	20	3	0	0	0	0	0	0	0	2	0	0	0	0	-	0
Mimosa Mirthmakers			.225	1876	5123	537	1153	153	43	16	1440	473	586	415	229	165	64	72.1	75

30 Players	Tm	Lg	AVG	OBP	SLG	OPS	ISO	SECA	TA	RCON	RC	RC/G	PA	IBB	HBP	SH	SF
Miller, D.	MI	TCBA	.312	.341	.413	.754	.101	.159	.691	8.6	70.5	5.1	537	1	2	6	3
Bronkie, H.	MI	TCBA	.264	.381	.264	.645	.000	.241	.686	.8	10.4	4.0	105	0	1	0	1
Hoblitzell, D.	MI	TCBA	.262	.309	.328	.637	.066	.182	.600	-3.9	64.6	3.7	648	2	4	3	12
Stephens, J.	MI	TCBA	.249	.316	.284	.600	.036	.116	.494	-8.0	20.6	3.1	250	3	2	3	0
McIntyre, M.	MI	TCBA	.244	.315	.303	.618	.059	.172	.538	-7.7	31.2	3.3	358	0	0	2	2
Hardy, J.	MI	TCBA	.235	.235	.235	.471	.000	.000	.308	-1.4	.9	2.0	17	0	0	0	0
O'Leary, C.	MI	TCBA	.234	.288	.266	.554	.032	.151	.506	-7.3	18.9	2.8	243	0	2	7	1
Egan, D.	MI	TCBA	.233	.320	.276	.596	.043	.216	.593	-11.9	48.3	3.1	570	0	1	23	0
Schaefer, G.	MI	TCBA	.226	.288	.290	.578	.065	.189	.540	-6.4	19.6	3.0	239	0	2	3	0
Lapp, J.	MI	TCBA	.225	.311	.287	.598	.062	.178	.530	-8.1	27.2	3.3	316	3	3	4	2
Clarke, F.	MI	TCBA	.220	.329	.289	.618	.069	.225	.596	-8.2	45.6	3.6	497	4	7	4	2
Birmingham, J.	MI	TCBA	.219	.257	.251	.508	.032	.098	.432	-23.4	22.1	2.0	372	1	4	3	3
Smith, L.	MI	TCBA	.204	.247	.287	.534	.083	.140	.424	-29.0	34.6	2.3	529	0	1	2	4
Walsh, J.	MI	TCBA	.204	.285	.290	.574	.086	.188	.495	-12.0	20.6	2.7	274	0	0	0	1
Richie, L.	MI	TCBA	.195	.267	.317	.584	.122	.220	.515	-1.7	3.9	3.0	47	0	0	2	0
Castle, J.	MI	TCBA	.190	.193	.190	.383	.000	.046	.292	-17.9	6.8	1.2	178	0	0	2	1
Powell, J.	MI	TCBA	.156	.174	.156	.329	.000	.022	.200	-6.0	1.1	.7	49	0	0	3	0
Boyd, R.	MI	TCBA	.135	.179	.135	.315	.000	.027	.219	-5.0	1.1	.9	40	0	1	1	0
Kahler, G.	MI	TCBA	.125	.125	.125	.250	.000	.000	.143	-5.2	.5	.5	33	0	0	1	0
Hartsel, T.	HH	TCBA	.125	.222	.125	.347	.000	.188	.357	-1.6	.7	1.3	18	0	0	0	0
Bemis, H.	MI	TCBA	.122	.143	.146	.289	.024	.049	.194	-6.0	.9	.7	43	0	0	1	0
Curtis, C.	MI	TCBA	.097	.110	.111	.221	.014	.028	.134	-12.4	.9	.3	80	0	0	7	0
Pelty, B.	MI	TCBA	.087	.189	.109	.297	.022	.130	.262	-6.3	1.8	1.0	61	0	1	8	1
Reulbach, E.	MI	TCBA	.086	.129	.086	.215	.000	.069	.170	-9.7	1.2	.5	69	0	0	7	1
Anderson, W.	MI	TCBA	.071	.071	.071	.143	.000	.000	.077	-2.8	.1	.2	15	0	0	1	0
Foster, E.	MI	TCBA	.064	.119	.077	.196	.013	.077	.149	-14.0	.9	.3	86	0	0	2	1
Hall, M.	MI	TCBA	.000	.000	.000	.000	.000	.000	.000	-3.0	.0	.0	13	0	0	0	1
Hinrichs, D.	MI	TCBA	.000	.000	.000	.000	.000	.000	.000	-1.5	.0	.0	6	0	0	0	0
Walker, M.	MI	TCBA	.000	.000	.000	.000	.000	.000	.000	-1.0	.0	.0	5	0	0	1	0
Hovlik, J.	MI	TCBA	.000	.000	.000	.000	.000	.000	.000	-.8	.0	.0	4	0	0	1	0
Mimosa Mirthmakers			.225	.285	.281	.566	.056	.157	.499	-212.7	437.1	2.8	5702	14	31	97	36

MOUNTAINEERS



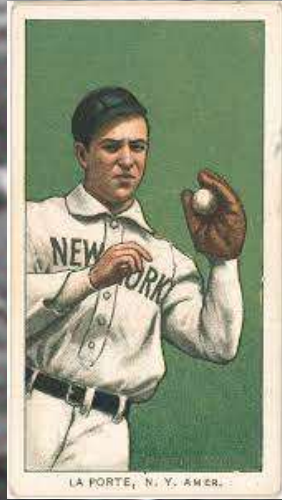
TURIN

An aerial night photograph of a city, likely San Francisco, with lights reflecting on the water. The city lights are visible in the foreground and middle ground, while the background shows a dark, hazy landscape under a blue sky.

Turin Mountaineers Draft Picks

1-Ray Fisher 2-Jack Ferry 3-John Kane 4-Red Kleinow 5-Charlie Pickett

**TURIN MOUNTAINEERS
OPENING DAY 1911
STARTING LINEUP**



- 1-Solly Hofman, CF**
- 2-Red Murray, RF**
- 3-Frank LaPorte, 3B**
- 4-Ham Hyatt, 1B**
- 5-John Hummel, 2B**
- 6-Bris Lord, LF**
- 7-Heinie Wagner, SS**
- 8-Red Kleinow, C**
- 9-Walter Johnson, P**

10 Pitchers	Tm	Lg	W	L	PCT	SV	ERA	G	GS	CG	SHO	QS	IP	H	R	ER	HR	SO	BB
Johnson, W.	TU	TCBA	33	6	.846	0	1.58	47	47	26	8	38	398.1	224	87	70	5	308	109
Young, C.	TU	TCBA	12	5	.706	2	2.01	36	22	10	4	15	179.0	144	64	40	0	54	38
Pickett, C.	TU	TCBA	2	0	1.000	0	2.31	16	0	0	0	0	11.2	13	5	3	0	4	3
Plank, E.	TU	TCBA	21	9	.700	2	2.39	39	32	15	3	21	267.1	211	85	71	3	120	79
Fisher, R.	TU	TCBA	3	0	1.000	1	2.45	29	1	0	0	0	51.1	48	25	14	0	21	15
Ferry, J.	TU	TCBA	4	7	.364	4	2.55	37	0	0	0	0	35.1	30	16	10	0	17	15
Rowan, J.	TU	TCBA	12	10	.545	0	2.60	41	32	10	1	16	224.2	197	91	65	0	106	92
Karger, E.	TU	TCBA	11	6	.647	1	2.78	40	11	7	1	5	139.1	116	59	43	4	66	54
Burns, B.	TU	TCBA	4	8	.333	2	4.02	42	8	3	1	2	87.1	95	48	39	2	29	26
Kleinow, R.	TU	TCBA	0	1	.000	0	5.56	3	1	1	0	1	11.1	16	8	7	0	3	5
Turin Mountaineers			102	52	.662	12	2.32	330	154	72	18	98	1405.2	1094	488	362	14	728	436

10 Pitchers	Tm	Lg	SUP/9	R/9	ERA	BF/9	BR/9	H/9	BB/9	SO/9	HR/9	ERPT	OBA	BF	BR	IBB	HB	WP	BK
Johnson, W.	TU	TCBA	4.4	1.97	1.58	34.8	7.5	5.1	2.2	7.0	.11	71.0	.163	1539	334	10	11	5	0
Young, C.	TU	TCBA	3.9	3.22	2.01	36.8	9.0	7.2	1.6	2.7	.00	23.4	.213	731	179	7	4	5	0
Pickett, C.	TU	TCBA	.0	3.86	2.31	39.3	11.6	10.0	1.5	3.1	.00	1.1	.277	51	15	1	0	0	0
Plank, E.	TU	TCBA	4.5	2.86	2.39	37.1	9.8	7.1	2.2	4.0	.10	23.6	.215	1102	292	13	15	2	0
Fisher, R.	TU	TCBA	.4	4.38	2.45	38.7	11.4	8.4	2.5	3.7	.00	4.2	.245	221	65	1	3	1	0
Ferry, J.	TU	TCBA	.0	4.08	2.55	39.2	11.2	7.6	2.5	4.3	.00	2.5	.238	154	44	5	4	0	0
Rowan, J.	TU	TCBA	4.8	3.65	2.60	38.5	11.7	7.9	3.6	4.2	.00	14.5	.235	961	291	3	5	1	1
Karger, E.	TU	TCBA	3.0	3.81	2.78	38.2	10.7	7.5	3.0	4.3	.26	6.3	.224	592	165	8	3	4	0
Burns, B.	TU	TCBA	1.8	4.95	4.02	40.0	12.6	9.8	2.1	3.0	.21	-8.1	.273	388	122	6	7	1	1
Kleinow, R.	TU	TCBA	1.6	6.35	5.56	43.7	18.3	12.7	4.0	2.4	.00	-3.0	.333	55	23	0	2	0	0
Turin Mountaineers			3.8	3.12	2.32	37.1	9.8	7.0	2.4	4.7	.09	135.6	.212	5794	1530	54	54	19	2

23 Players	Tm	Lg	AVG	G	AB	R	H	2B	3B	HR	TB	RBI	SO	BB	ASB	SB	CS	SBP	GDP
Burns, B.	TU	TCBA	.391	42	23	0	9	0	0	0	9	1	2	0	0	0	0	-	0
Hofman, S.	TU	TCBA	.316	141	465	92	147	23	14	1	201	53	33	75	53	38	15	71.7	5
McLean, L.	TU	TCBA	.295	132	376	49	111	7	6	1	133	54	28	33	6	5	1	83.3	10
Wagner, H.	TU	TCBA	.279	148	462	64	129	20	7	0	163	58	41	50	46	35	11	76.1	1
Karger, E.	TU	TCBA	.268	40	56	10	15	1	0	1	19	12	6	7	0	0	0	-	5
Lord, B.	TU	TCBA	.267	129	484	66	129	27	14	0	184	73	41	34	19	15	4	78.9	8
Hummel, J.	TU	TCBA	.259	152	588	85	152	26	15	3	217	68	74	53	38	26	12	68.4	8
LaPorte, F.	TU	TCBA	.254	118	401	59	102	16	2	2	128	63	50	44	34	24	10	70.6	10
Fisher, R.	TU	TCBA	.250	29	12	2	3	1	0	0	4	1	0	0	0	0	0	-	0
Hyatt, H.	TU	TCBA	.243	99	144	23	35	4	7	0	53	22	17	17	7	4	3	57.1	0
Murray, R.	TU	TCBA	.242	143	554	101	134	35	4	4	189	60	49	68	94	72	22	76.6	7
Lennox, E.	TU	TCBA	.235	104	358	36	84	15	2	4	115	57	33	24	8	7	1	87.5	5
Luderus, F.	TU	TCBA	.230	54	122	22	28	6	2	0	38	15	9	17	2	2	0	100.0	0
Heitmuller, H.	TU	TCBA	.211	100	227	20	48	5	3	0	59	23	45	15	10	8	2	80.0	2
Pio, P.	TU	TCBA	.204	119	333	23	68	8	3	2	88	32	67	17	0	0	0	-	4
Rowan, J.	TU	TCBA	.194	41	72	8	14	1	0	0	15	6	22	10	0	0	0	-	3
Kane, J.	TU	TCBA	.194	48	62	13	12	0	0	2	18	10	12	17	5	3	2	60.0	0
Kleinow, R.	TU	TCBA	.190	90	210	24	40	4	0	0	44	16	31	24	1	1	0	100.0	4
Ferry, J.	TU	TCBA	.174	37	23	0	4	3	0	0	7	0	5	1	0	0	0	-	0
Plank, E.	TU	TCBA	.173	39	81	9	14	4	0	0	18	7	15	4	0	0	0	-	1
Johnson, W.	TU	TCBA	.138	47	138	14	19	8	1	0	29	9	25	3	2	1	1	50.0	1
Young, C.	TU	TCBA	.078	36	51	5	4	1	1	0	7	3	7	6	0	0	0	-	1
Pickett, C.	TU	TCBA	.000	17	9	3	0	0	0	0	0	0	0	7	0	0	0	-	0
Turin Mountaineers			.248	1905	5251	728	1301	215	81	20	1738	643	612	526	325	241	84	74.2	75

23 Players	Tm	Lg	AVG	OBP	SLG	OPS	ISO	SECA	TA	RCON	RC	RC/G	PA	IBB	HBP	SH	SF
Burns, B.	TU	TCBA	.391	.391	.391	.783	.000	.000	.643	.6	3.6	6.1	25	0	0	2	0
Hofman, S.	TU	TCBA	.316	.411	.432	.844	.116	.327	.932	32.2	89.2	7.0	545	12	1	3	1
McLean, L.	TU	TCBA	.295	.348	.354	.702	.059	.157	.630	4.3	47.9	4.5	423	7	3	1	10
Wagner, H.	TU	TCBA	.279	.349	.353	.702	.074	.234	.728	8.2	64.5	4.9	528	5	3	7	6
Karger, E.	TU	TCBA	.268	.386	.339	.725	.071	.196	.674	1.9	7.4	4.0	72	0	5	2	2
Lord, B.	TU	TCBA	.267	.314	.380	.694	.114	.207	.638	1.3	59.4	4.2	533	0	1	10	4
Hummel, J.	TU	TCBA	.259	.322	.369	.691	.111	.224	.658	.4	72.6	4.1	664	1	4	14	5
LaPorte, F.	TU	TCBA	.254	.328	.319	.647	.065	.209	.621	-3.0	44.1	3.6	459	2	2	8	4
Fisher, R.	TU	TCBA	.250	.308	.333	.641	.083	.083	.556	-2	1.5	3.3	16	0	1	3	0
Hyatt, H.	TU	TCBA	.243	.335	.368	.703	.125	.250	.696	.5	19.5	4.5	169	2	4	2	2
Murray, R.	TU	TCBA	.242	.325	.341	.666	.099	.312	.737	6.0	68.9	4.1	634	1	2	5	4
Lennox, E.	TU	TCBA	.235	.279	.321	.600	.087	.170	.521	-10.5	34.0	3.1	396	0	0	9	5
Luderus, F.	TU	TCBA	.230	.317	.311	.628	.082	.238	.606	-1.3	14.4	3.9	144	0	0	2	3
Heitmuller, H.	TU	TCBA	.211	.260	.260	.520	.048	.141	.454	-12.8	17.4	2.4	257	1	1	11	3
Pio, P.	TU	TCBA	.204	.244	.264	.508	.060	.111	.394	-22.8	21.9	2.1	358	2	1	5	2
Rowan, J.	TU	TCBA	.194	.301	.208	.510	.014	.153	.426	-4.1	5.3	2.1	91	0	1	8	0
Kane, J.	TU	TCBA	.194	.367	.290	.657	.097	.387	.731	.2	8.5	4.1	83	0	0	4	0
Kleinow, R.	TU	TCBA	.190	.274	.210	.483	.019	.138	.397	-14.5	13.5	2.0	240	0	0	6	0
Ferry, J.	TU	TCBA	.174	.208	.304	.513	.130	.174	.421	-1.6	1.5	2.1	24	0	0	0	0
Plank, E.	TU	TCBA	.173	.221	.222	.443	.049	.099	.338	-7.3	4.8	1.6	101	0	1	15	0
Johnson, W.	TU	TCBA	.138	.168	.210	.378	.072	.094	.289	-16.4	5.5	1.1	161	0	2	18	0
Young, C.	TU	TCBA	.078	.175	.137	.313	.059	.176	.271	-7.0	1.8	.9	67	0	0	10	0
Pickett, C.	TU	TCBA	.000	.438	.000	.438	.000	.778	.778	.1	1.0	2.6	17	0	0	1	0
Turin Mountaineers			.248	.317	.331	.648	.083	.213	.617	-45.7	595.0	3.7	6007	33	32	146	51



M U L E S

© WILLIAMS & BIRD - BUFFALO, N.Y.



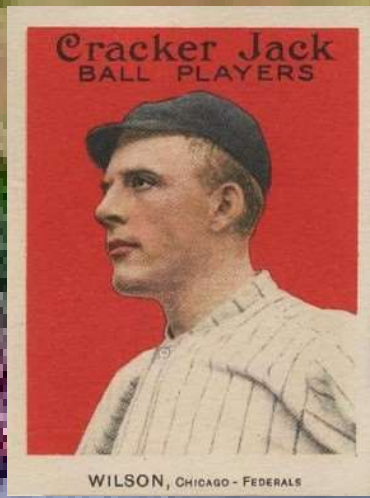
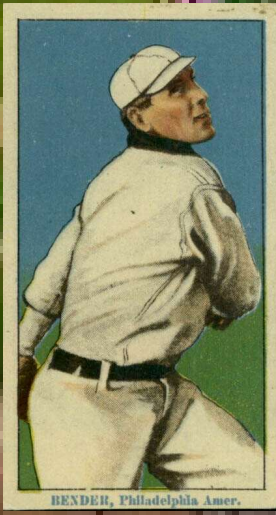
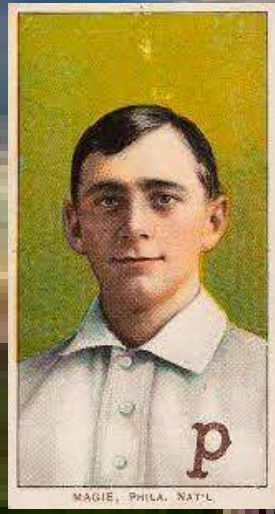
- 1-Roger Peckinpaugh
- 2-Art Phelan
- 3-Eddie Stack
- 4-Bob Unglaub

MADE BY THE CITY & COUNTY OF
Schenectady Co.,

Buffalo, N.Y.

Buffalo Mules Draft Picks

BUFFALO 1911 OPENING DAY STARTING LINEUP



- 1-Sherry Magee, CF
- 2-Ty Cobb, LF
- 3-Fred Merkle, 1B
- 4-F Beck, RF
- 5-Art Wilson, C
- 6-Chief Bender, P
- 7-Amby McConnell, 2B
- 8-George McBride, SS
- 9-Art Phelan, 3B

9 Pitchers	Tm	Lg	W	L	PCT	SV	ERA	G	GS	CG	SHO	QS	IP	H	R	ER	HR	SO	BB
Katon, N.	BU	TCBA	0	0	-	0	1.35	1	0	0	0	0	6.2	6	1	1	0	1	5
Bender, C.	BU	TCBA	23	5	.821	0	1.51	33	33	19	6	25	269.0	146	66	45	1	152	86
Powell, B.	BU	TCBA	6	3	.667	1	1.88	15	11	6	2	7	91.0	54	28	19	0	27	27
Collins, R.	BU	TCBA	18	11	.621	1	2.50	37	32	14	3	16	255.1	216	108	71	4	99	70
Brown, B.	BU	TCBA	16	17	.485	5	2.69	48	27	11	3	12	231.0	206	100	69	2	71	79
Frock, S.	BU	TCBA	11	10	.524	7	2.97	48	16	10	1	7	188.0	161	86	62	4	157	74
Stack, E.	BU	TCBA	7	8	.467	1	3.27	21	17	6	0	10	129.1	138	62	47	5	61	36
Raymond, B.	BU	TCBA	7	5	.583	3	4.05	30	11	4	1	4	122.1	144	75	55	0	76	49
Marquard, R.	BU	TCBA	3	4	.429	1	4.23	26	7	2	0	2	104.1	133	64	49	1	93	47
Buffalo Mules			91	63	.591	19	2.69	259	154	72	16	83	1397.0	1204	590	418	17	737	473

9 Pitchers	Tm	Lg	SUP/9	R/9	ERA	BF/9	BR/9	H/9	BB/9	SO/9	HR/9	ERPT	OBA	BF	BR	IBB	HB	WP	BK
Katon, N.	BU	TCBA	.0	1.35	1.35	39.1	14.8	8.1	6.8	1.4	.00	1.4	.250	29	11	0	0	0	0
Bender, C.	BU	TCBA	5.6	2.21	1.51	35.3	8.0	4.9	2.8	5.1	.03	50.2	.156	1056	239	1	8	4	1
Powell, B.	BU	TCBA	3.8	2.77	1.88	36.3	8.2	5.3	2.7	2.7	.00	13.2	.167	367	83	0	2	2	0
Collins, R.	BU	TCBA	3.9	3.81	2.50	37.6	10.4	7.6	2.5	3.5	.14	19.4	.223	1067	294	0	8	4	2
Brown, B.	BU	TCBA	3.3	3.90	2.69	37.8	11.3	8.0	3.1	2.8	.08	12.8	.238	969	291	0	6	4	0
Frock, S.	BU	TCBA	2.7	4.12	2.97	38.2	11.6	7.7	3.5	7.5	.19	4.5	.229	798	242	0	7	4	0
Stack, E.	BU	TCBA	3.6	4.31	3.27	38.9	12.3	9.6	2.5	4.2	.35	-1.2	.273	559	177	0	3	3	0
Raymond, B.	BU	TCBA	3.6	5.52	4.05	41.6	14.6	10.6	3.6	5.6	.00	-11.7	.287	566	198	0	5	0	0
Marquard, R.	BU	TCBA	2.3	5.52	4.23	41.8	15.8	11.5	4.1	8.0	.09	-12.1	.314	484	183	0	3	4	0
Buffalo Mules			3.8	3.80	2.69	38.0	11.1	7.8	3.0	4.7	.11	76.5	.229	5895	1718	1	42	25	3

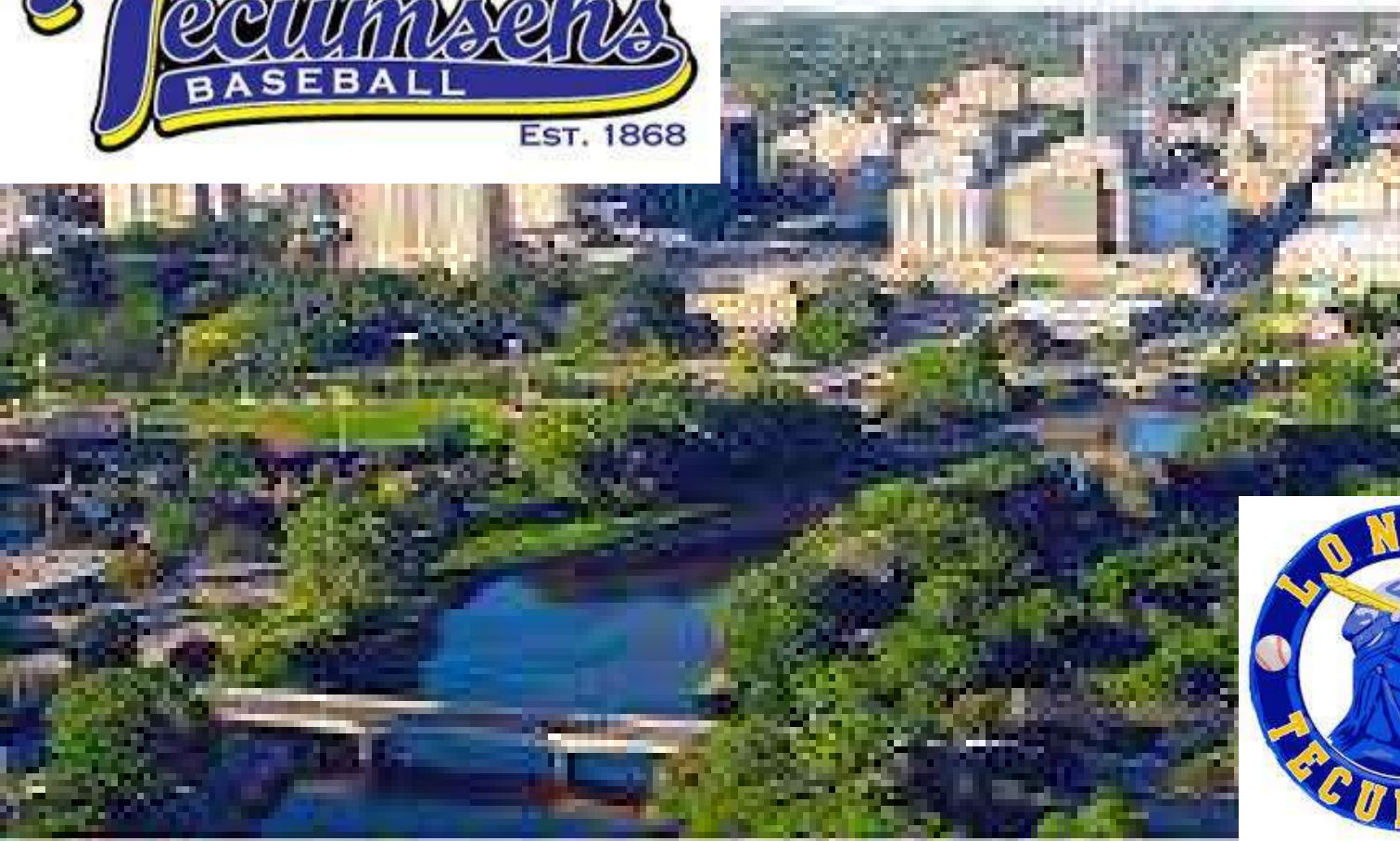


24 Players	Tm	Lg	AVG	G	AB	R	H	2B	3B	HR	TB	RBI	SO	BB	ASB	SB	CS	SBP	GDP
Cobb, T.	BU	TCBA	.413	136	518	120	214	36	12	6	292	106	35	73	70	52	18	74.3	7
Peckinpough, R.	BU	TCBA	.368	15	19	4	7	0	0	0	7	1	1	1	2	2	0	100.0	1
Smith, S.	BU	TCBA	.357	18	28	4	10	0	0	0	10	7	3	7	0	0	0	-	0
Magee, S.	BU	TCBA	.342	148	523	120	179	32	13	0	237	82	32	97	55	40	15	72.7	4
Merkle, F.	BU	TCBA	.307	123	473	76	145	45	10	2	216	85	44	61	24	21	3	87.5	4
Stark, D.	BU	TCBA	.256	20	43	4	11	2	0	0	13	4	7	2	1	0	1	.0	0
Raymond, B.	BU	TCBA	.244	30	41	5	10	1	0	0	11	6	7	4	0	0	0	-	0
Beck, F.	BU	TCBA	.242	142	596	63	144	33	2	6	199	123	67	22	7	3	4	42.9	10
Katon, N.	BU	TCBA	.237	121	426	47	101	20	9	1	142	50	73	34	0	0	0	-	15
McConnell, A.	BU	TCBA	.236	43	144	19	34	3	2	0	41	9	14	13	8	5	3	62.5	1
Bender, C.	BU	TCBA	.212	35	104	21	22	2	3	0	30	12	13	4	0	0	0	-	2
Unglaub, B.	BU	TCBA	.207	95	299	31	62	11	2	0	77	28	37	12	13	9	4	69.2	8
McBride, G.	BU	TCBA	.190	143	510	43	97	22	0	0	119	55	84	68	8	6	2	75.0	5
Adams, B.			.189	25	90	7	17	0	0	0	17	5	10	2	0	0	0	-	3
Powell, B.	BU	TCBA	.188	15	32	4	6	1	0	0	7	1	8	1	0	0	0	-	2
Wilson, A.	BU	TCBA	.182	21	55	8	10	3	1	0	15	3	8	10	2	2	0	100.0	2
Phelan, A.	BU	TCBA	.181	129	458	72	83	0	0	0	83	29	67	69	25	18	7	72.0	12
Frock, S.	BU	TCBA	.176	48	68	7	12	0	0	0	12	2	19	2	0	0	0	-	2
Criger, L.	BU	TCBA	.176	113	381	37	67	9	0	0	76	22	55	58	0	0	0	-	12
Rath, M.	BU	TCBA	.149	72	194	22	29	8	0	0	37	17	26	40	1	0	1	.0	3
Brown, B.	BU	TCBA	.127	48	79	5	10	0	0	2	16	5	28	3	0	0	0	-	0
Collins, R.	BU	TCBA	.092	37	87	4	8	0	0	0	8	2	6	4	0	0	0	-	4
Marquard, R.	BU	TCBA	.050	26	40	2	2	0	0	0	2	1	13	0	0	0	0	-	0
Stack, E.	BU	TCBA	.040	21	50	1	2	0	0	0	2	0	16	1	0	0	0	-	3
Buffalo Mules			.244	1624	5258	726	1282	228	54	17	1669	655	673	588	216	158	58	73.1	100

Buffalo Mules			.244	1624	5258	726	1282	228	54	17	1669	655	673	588	216	158	58	73.1	10
24 Players	Tm	Lg	AVG	OBP	SLG	OPS	ISO	SECA	TA	RCON	RC	RC/G	PA	IBB	HBP	SH	SF		
Cobb, T.	BU	TCBA	.413	.481	.564	1.045	.151	.357	1.274	76.6	149.2	11.5	613	10	2	12	8		
Peckinpaugh, R.	BU	TCBA	.368	.409	.368	.778	.000	.158	.846	1.5	3.3	6.4	22	0	1	0	1		
Smith, S.	BU	TCBA	.357	.447	.357	.805	.000	.250	.944	2.4	5.9	7.5	38	1	0	0	3		
Magee, S.	BU	TCBA	.342	.461	.453	.914	.111	.344	1.091	56.8	125.1	8.8	662	9	22	16	4		
Merkle, F.	BU	TCBA	.307	.387	.457	.844	.150	.317	.901	33.4	91.4	7.1	550	9	4	8	4		
Stark, D.	BU	TCBA	.256	.289	.302	.591	.047	.070	.455	-2.2	3.6	2.9	45	0	0	0	0		
Raymond, B.	BU	TCBA	.244	.311	.268	.579	.024	.122	.484	-1.5	3.9	3.2	47	0	0	2	0		
Beck, F.	BU	TCBA	.242	.271	.334	.605	.092	.128	.494	-21.0	52.9	3.0	636	5	6	2	10		
Katon, N.	BU	TCBA	.237	.296	.333	.629	.096	.176	.526	-9.8	40.6	3.2	469	0	3	2	4		
McConnell, A.	BU	TCBA	.236	.319	.285	.604	.049	.153	.570	-3.8	14.9	3.4	167	0	6	1	3		
Bender, C.	BU	TCBA	.212	.278	.288	.567	.077	.115	.476	-4.7	8.9	2.7	119	0	6	4	1		
Unglaub, B.	BU	TCBA	.207	.241	.258	.498	.050	.107	.402	-20.9	17.9	1.9	323	0	2	6	3		
McBride, G.	BU	TCBA	.190	.289	.233	.522	.043	.184	.471	-26.5	40.5	2.5	601	4	5	12	6		
Adams, B.			.189	.204	.189	.393	.000	.022	.250	-9.8	3.1	1.1	93	0	0	0	1		
Powell, B.	BU	TCBA	.188	.212	.219	.431	.031	.063	.286	-3.1	1.1	1.1	34	0	0	1	0		
Wilson, A.	BU	TCBA	.182	.328	.273	.601	.091	.309	.617	-5	5.5	3.2	67	3	2	0	0		
Phelan, A.	BU	TCBA	.181	.290	.181	.471	.000	.175	.439	-30.6	29.5	2.0	543	0	3	8	5		
Frock, S.	BU	TCBA	.176	.200	.176	.376	.000	.029	.241	-7.8	2.3	1.0	72	0	0	2	0		
Criger, L.	BU	TCBA	.176	.285	.199	.485	.024	.176	.417	-24.8	24.2	2.0	447	3	2	2	4		
Rath, M.	BU	TCBA	.149	.294	.191	.485	.041	.242	.462	-12.3	14.1	2.1	244	1	1	6	3		
Brown, B.	BU	TCBA	.127	.157	.203	.359	.076	.114	.275	-9.8	2.9	1.1	86	0	0	3	1		
Collins, R.	BU	TCBA	.092	.141	.092	.233	.000	.046	.157	-14.4	1.1	.3	97	0	1	5	0		
Marquard, R.	BU	TCBA	.050	.050	.050	.100	.000	.000	.053	-8.6	.1	.1	41	0	0	1	0		
Stack, E.	BU	TCBA	.040	.059	.040	.099	.000	.020	.059	-10.8	.0	.0	51	0	0	0	0		
Buffalo Mules			.244	.324	.317	.642	.074	.204	.600	-52.1	583.2	3.7	6067	45	66	93	61		



PEOPLE LOVE LONDON



🇨🇦 LONDON ONTARIO CANADA 🇨🇦

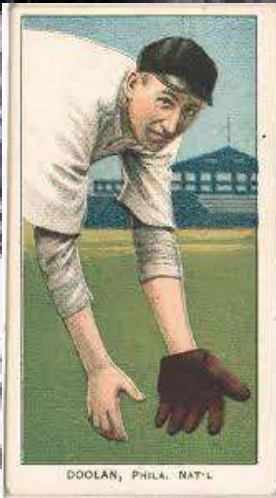
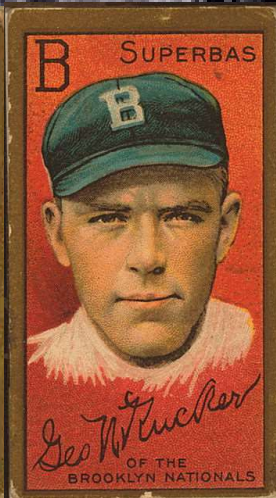
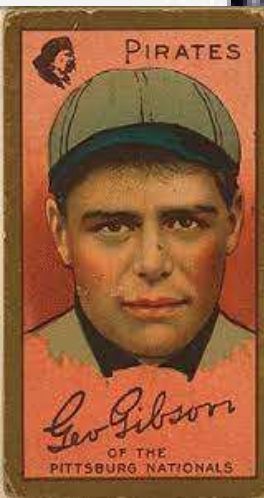
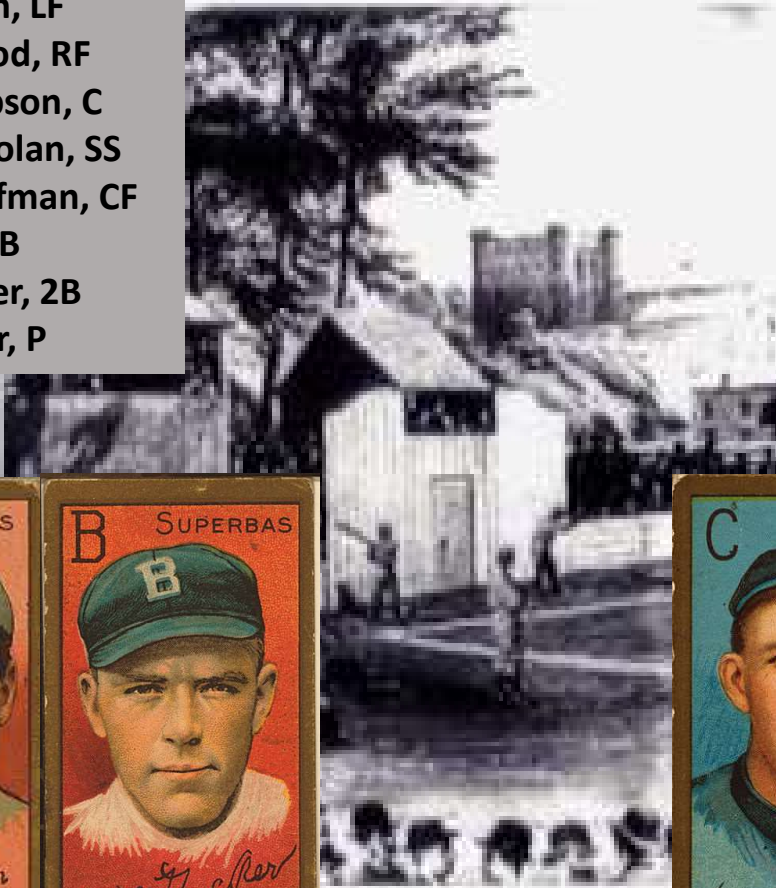
London Tecumsehs Draft Picks

1-Fred Blanding 2-Jay Kirke 2a-Otto Miller 3-Marty McHale
4-Hap Meyers 5-Jock Somerlott 6-Walt Dickson 7-Billy Kelly
8-Hugh Bradley XFA-Ed Hearn, Claud Derrick, Patsy Flaherty,
Mike Konnick, Walt Doane, Mike Simon

BASEBALL CHAMPIONS 1877

London Tecumsehs Opening Day Starting Lineup 1911

- 1-Eddie Grant, 3B
- 2-Joe Jackson, LF
- 3-Wilbur Good, RF
- 4-George Gibson, C
- 5-Mickey Doolan, SS
- 6-Danny Hoffman, CF
- 7-Al Burch, 1B
- 8-Ed Hebscher, 2B
- 9-Nap Rucker, P



16 Pitchers	Tm	Lg	W	L	PCT	SV	ERA	G	GS	CG	SHO	QS	IP	H	R	ER	HR	SO	BB
Walker, D.	SO	TCBA	0	0	-	0	.00	2	0	0	0	0	2.1	1	0	0	0	2	1
Dickson, W.	LT	TCBA	0	0	-	2	.79	8	0	0	0	0	11.1	11	1	1	1	4	0
Smith, F.	LT	TCBA	12	8	.600	1	2.16	28	23	12	4	18	183.1	132	51	44	0	59	49
Rucker, N.	LT	TCBA	16	18	.471	0	2.29	45	35	13	3	20	295.1	233	115	75	4	145	77
Willett, E.	LT	TCBA	11	12	.478	4	2.32	32	19	10	4	11	162.2	126	54	42	0	43	64
Flaherty, P.	LT	TCBA	1	0	1.000	0	2.45	4	0	0	0	0	3.2	5	1	1	0	3	0
Falkenberg, C.	LT	TCBA	3	5	.375	0	2.46	19	9	4	0	3	84.0	69	34	23	0	31	26
Mitchell, R.	LT	TCBA	2	2	.500	0	2.78	7	7	1	0	5	55.0	44	20	17	0	24	20
Lake, J.	LT	TCBA	12	15	.444	1	3.16	32	24	12	1	10	210.2	200	109	74	1	109	80
McHale, M.	LT	TCBA	0	0	-	0	3.60	8	0	0	0	0	10.0	11	4	4	0	9	8
Mattern, A.	LT	TCBA	5	14	.263	3	3.64	33	18	5	0	10	151.0	150	82	61	3	46	53
Quinn, J.	SO	TCBA	2	5	.286	0	3.79	7	7	4	0	3	59.1	64	31	25	0	12	15
Blanding, F.	LT	TCBA	1	3	.250	0	3.98	23	5	1	0	1	52.0	55	38	23	2	23	28
Hebscher, E.	LT	TCBA	0	0	-	0	5.40	1	0	0	0	0	5.0	6	4	3	1	1	0
Bailey, B.	LT	TCBA	4	2	.667	0	5.55	25	7	2	0	4	73.0	81	53	45	3	43	36
Doane, W.	LT	TCBA	1	0	1.000	0	6.21	19	0	0	0	0	29.0	52	29	20	0	15	11
London Tecumsehs			70	84	.455	11	2.97	293	154	64	12	85	1387.2	1240	626	458	15	569	468

16 Pitchers	Tm	Lg	SUP/9	R/9	ERA	BF/9	BR/9	H/9	BB/9	SO/9	HR/9	ERPT	OBA	BF	BR	IBB	HB	WP	BK
Walker, D.	SO	TCBA	.0	.00	.00	30.9	7.7	3.9	3.9	7.7	.00	.8	.143	8	2	0	0	0	0
Dickson, W.	LT	TCBA	.0	.79	.79	35.7	8.7	8.7	.0	3.2	.79	3.0	.244	45	11	0	0	0	0
Smith, F.	LT	TCBA	3.7	2.50	2.16	35.5	8.9	6.5	2.3	2.9	.00	20.9	.201	723	181	3	3	0	0
Rucker, N.	LT	TCBA	3.1	3.50	2.29	37.0	9.8	7.1	2.2	4.4	.12	29.5	.214	1215	320	4	14	2	0
Willett, E.	LT	TCBA	3.7	2.99	2.32	37.2	10.5	7.0	3.3	2.4	.00	15.6	.214	673	190	5	5	1	0
Flaherty, P.	LT	TCBA	.0	2.45	2.45	39.3	12.3	12.3	.0	7.4	.00	.3	.333	16	5	0	0	0	0
Falkenberg, C.	LT	TCBA	3.6	3.64	2.46	37.8	10.3	7.4	2.7	3.3	.00	6.7	.218	353	96	1	2	3	0
Mitchell, R.	LT	TCBA	2.6	3.27	2.78	37.3	10.8	7.2	3.3	3.9	.00	2.5	.219	228	66	0	2	0	0
Lake, J.	LT	TCBA	3.2	4.66	3.16	39.6	12.3	8.5	3.3	4.7	.04	.6	.247	927	288	2	10	1	1
McHale, M.	LT	TCBA	.0	3.60	3.60	42.3	17.1	9.9	7.2	8.1	.00	-.5	.297	47	19	0	0	1	0
Mattern, A.	LT	TCBA	1.8	4.89	3.64	39.0	12.3	8.9	3.0	2.7	.18	-7.5	.264	655	207	2	6	2	0
Quinn, J.	SO	TCBA	3.6	4.70	3.79	38.4	11.8	9.7	2.1	1.8	.00	-4.0	.277	253	78	1	0	0	0
Blanding, F.	LT	TCBA	2.9	6.58	3.98	42.2	15.2	9.5	4.7	4.0	.35	-4.6	.275	244	88	1	6	2	0
Hebscher, E.	LT	TCBA	.0	7.20	5.40	41.4	10.8	10.8	.0	1.8	1.80	-1.2	.261	23	6	0	0	0	0
Bailey, B.	LT	TCBA	5.3	6.53	5.55	41.1	14.5	10.0	4.4	5.3	.37	-19.2	.281	333	118	0	1	3	0
Doane, W.	LT	TCBA	.0	9.00	6.21	47.8	19.9	16.1	3.4	4.7	.00	-9.7	.374	154	64	0	1	0	0
London Tecumsehs			3.1	4.06	2.97	38.2	11.3	8.0	2.9	3.7	.10	33.2	.238	5897	1739	19	50	15	1

39 Players	Tm	Lg	AVG	G	AB	R	H	2B	3B	HR	TB	RBI	SO	BB	ASB	SB	CS	SBP	GDP
Flaherty, P.	LT	TCBA	1.000	4	1	0	1	0	0	0	1	1	0	0	0	0	0	-	0
Dickson, W.	LT	TCBA	.500	8	2	0	1	0	0	0	1	0	0	0	0	0	0	-	0
Good, W.	LT	TCBA	.412	25	97	10	40	8	3	0	54	19	13	7	5	1	4	20.0	2
Simon, M.	LT	TCBA	.375	14	16	3	6	0	0	0	6	5	0	4	0	0	0	-	0
Jackson, J.	LT	TCBA	.345	23	87	15	30	6	3	0	42	15	10	10	3	2	1	66.7	2
Bailey, B.	LT	TCBA	.333	25	15	4	5	0	0	0	5	0	5	3	0	0	0	-	0
Grant, E.	LT	TCBA	.291	149	632	82	184	21	8	0	221	56	78	41	41	33	8	80.5	7
Myers, H.	LT	TCBA	.286	4	7	1	2	0	0	0	2	2	0	0	0	0	0	-	0
Gibson, G.	LT	TCBA	.282	135	503	57	142	26	7	4	194	71	30	46	18	7	11	38.9	9
Lake, J.	LT	TCBA	.275	32	80	9	22	1	1	0	25	6	9	4	0	0	0	-	0
Hoffman, D.	LT	TCBA	.264	113	413	47	109	15	6	0	136	52	56	36	23	18	5	78.3	5
Falkenberg, C.	LT	TCBA	.259	19	27	4	7	1	0	0	8	4	4	1	1	1	0	100.0	0
Mitchell, R.	LT	TCBA	.250	7	16	1	4	2	0	0	6	1	1	0	0	0	0	-	0
Somerlott, J.	LT	TCBA	.247	78	166	15	41	0	0	0	41	21	25	13	5	3	2	60.0	0
Hebscher, E.	LT	TCBA	.232	128	413	32	96	12	2	6	130	44	93	28	0	0	0	-	10
Davidson, B.	LT	TCBA	.232	139	496	58	115	10	6	0	137	43	54	20	39	27	12	69.2	4
Graney, J.	LT	TCBA	.225	128	457	62	103	18	10	0	141	47	59	53	22	18	4	81.8	8
McKechnie, B.	LT	TCBA	.214	132	384	39	82	4	4	0	94	23	54	34	8	7	1	87.5	8
Abbott, O.	LT	TCBA	.208	56	144	13	30	4	1	0	36	13	43	15	8	7	1	87.5	5
Downey, T.	LT	TCBA	.206	91	282	33	58	8	0	1	69	24	22	31	7	4	3	57.1	8
Bradley, H.	LT	TCBA	.203	56	64	9	13	8	1	0	23	8	7	6	10	7	3	70.0	0
Burch, A.	LT	TCBA	.201	106	384	36	77	12	1	0	91	34	31	27	17	12	5	70.6	8
Willett, E.	LT	TCBA	.190	32	42	8	8	2	1	0	12	2	3	6	0	0	0	-	1
Doolan, M.	SO	TCBA	.167	34	138	10	23	5	0	0	28	10	10	6	3	2	1	66.7	2
Clarke, N.	LT	TCBA	.164	29	55	6	9	2	0	0	11	4	12	5	0	0	0	-	0
Smith, F.	LT	TCBA	.150	28	40	5	6	1	0	0	7	5	5	13	0	0	0	-	1
Doane, W.	LT	TCBA	.143	19	14	2	2	2	0	0	4	0	3	1	0	0	0	-	0
Rucker, N.	LT	TCBA	.141	45	85	6	12	3	0	0	15	4	16	3	0	0	0	-	4
Kirke, J.	LT	TCBA	.139	51	101	14	14	3	0	0	17	8	23	6	10	6	4	60.0	0
Quinn, J.	SO	TCBA	.136	7	22	1	3	0	0	0	3	0	4	3	0	0	0	-	0
Mattern, A.	LT	TCBA	.128	33	39	2	5	0	0	0	5	2	11	1	0	0	0	-	1
Blanding, F.	LT	TCBA	.100	23	10	0	1	1	0	0	2	0	3	0	0	0	0	-	0
Miller, O.	LT	TCBA	.032	12	31	1	1	0	0	0	1	0	9	1	0	0	0	-	2
Konnick, M.	LT	TCBA	.000	8	6	0	0	0	0	0	0	1	1	2	0	0	0	-	1
Derrick, C.	LT	TCBA	.000	4	5	0	0	0	0	0	0	0	0	0	0	0	0	-	2
Kelly, B.	LT	TCBA	.000	4	3	0	0	0	0	0	0	0	1	1	0	0	0	-	0
Hearn, E.	LT	TCBA	.000	3	2	0	0	0	0	0	0	0	0	0	0	0	0	-	0
McHale, M.	LT	TCBA	.000	8	1	0	0	0	0	0	0	0	0	0	0	0	0	-	0
Walker, D.	SO	TCBA	-	2	0	0	0	0	0	0	0	0	0	0	0	0	0	-	0
London Tecumsehs			.237	1814	5280	585	1252	175	54	11	1568	525	695	427	220	155	65	70.5	90

39 Players	Tm	Lg	AVG	OBP	SLG	OPS	ISO	SECA	TA	RCON	RC	RC/G	PA	IBB	HBP	SH	SF
Flaherty, P.	LT	TCBA	1.000	1.000	1.000	2.000	.000	.000	-	.5	1.0	-	1	0	0	0	0
Dickson, W.	LT	TCBA	.500	.500	.500	1.000	.000	.000	1.000	.2	.5	13.5	2	0	0	0	0
Good, W.	LT	TCBA	.412	.448	.557	1.004	.144	.186	.984	8.8	22.0	9.3	105	2	0	0	1
Simon, M.	LT	TCBA	.375	.524	.375	.899	.000	.250	1.100	1.9	3.9	9.6	22	0	1	1	0
Jackson, J.	LT	TCBA	.345	.412	.483	.895	.138	.264	.900	6.6	17.1	7.7	97	3	0	0	0
Bailey, B.	LT	TCBA	.333	.444	.333	.778	.000	.200	.800	.8	2.8	5.8	21	0	0	3	0
Grant, E.	LT	TCBA	.291	.333	.350	.683	.059	.163	.639	3.2	78.3	4.5	683	1	1	4	5
Myers, H.	LT	TCBA	.286	.286	.286	.571	.000	.000	.400	-.3	.6	3.1	7	0	0	0	0
Gibson, G.	LT	TCBA	.282	.348	.386	.733	.103	.187	.667	4.6	66.7	4.6	565	3	7	4	5
Lake, J.	LT	TCBA	.275	.310	.313	.622	.037	.087	.500	-2.2	8.1	3.8	84	0	0	0	0
Hoffman, D.	LT	TCBA	.264	.330	.329	.659	.065	.184	.624	-1.1	48.5	4.1	460	2	6	2	3
Falkenberg, C.	LT	TCBA	.259	.310	.296	.607	.037	.111	.550	-.5	3.0	3.5	32	0	1	3	0
Mitchell, R.	LT	TCBA	.250	.250	.375	.625	.125	.125	.500	-.5	1.5	3.2	17	0	0	1	0
Somerlott, J.	LT	TCBA	.247	.304	.247	.551	.000	.084	.465	-7.7	14.2	2.9	185	0	2	1	3
Hebscher, E.	LT	TCBA	.232	.279	.315	.594	.082	.150	.483	-15.0	35.6	2.9	444	0	0	0	3
Davidson, B.	LT	TCBA	.232	.263	.276	.539	.044	.115	.474	-26.8	38.0	2.5	537	1	4	8	9
Graney, J.	LT	TCBA	.225	.304	.309	.613	.083	.230	.582	-8.6	47.0	3.4	520	2	1	4	5
McKechnie, B.	LT	TCBA	.214	.279	.245	.523	.031	.135	.437	-21.1	28.0	2.4	429	3	1	9	1
Abbott, O.	LT	TCBA	.208	.287	.250	.537	.042	.188	.492	-6.0	11.2	2.4	164	0	1	4	0
Downey, T.	LT	TCBA	.206	.286	.245	.530	.039	.152	.447	-15.7	20.0	2.2	319	5	1	4	1
Bradley, H.	LT	TCBA	.203	.282	.359	.641	.156	.313	.685	-.9	6.7	3.3	72	2	1	1	0
Burch, A.	LT	TCBA	.201	.254	.237	.491	.036	.125	.412	-26.5	24.1	2.0	422	0	2	5	4
Willett, E.	LT	TCBA	.190	.346	.286	.632	.095	.238	.629	-.3	5.1	3.5	57	0	4	5	0
Doolan, M.	SO	TCBA	.167	.211	.203	.414	.036	.087	.322	-13.8	6.1	1.4	148	0	2	1	1
Clarke, N.	LT	TCBA	.164	.246	.200	.446	.036	.127	.370	-4.7	3.2	1.8	62	0	1	1	0
Smith, F.	LT	TCBA	.150	.373	.175	.548	.025	.350	.657	-.1	5.4	3.1	68	0	3	9	3
Doane, W.	LT	TCBA	.143	.200	.286	.486	.143	.214	.417	-1.1	.9	1.9	16	0	0	1	0
Rucker, N.	LT	TCBA	.141	.170	.176	.347	.035	.071	.234	-10.7	2.5	.7	102	0	0	14	0
Kirke, J.	LT	TCBA	.139	.191	.168	.359	.030	.109	.330	-12.6	3.7	1.0	113	0	1	3	2
Quinn, J.	SO	TCBA	.136	.240	.136	.376	.000	.136	.316	-2.4	.9	1.3	25	0	0	0	0
Mattern, A.	LT	TCBA	.128	.171	.128	.299	.000	.026	.200	-5.5	1.0	.7	45	0	1	4	0
Blanding, F.	LT	TCBA	.100	.100	.200	.300	.100	.100	.222	-1.4	.2	.6	11	0	0	1	0
Miller, O.	LT	TCBA	.032	.063	.032	.095	.000	.032	.063	-6.7	.0	.0	32	0	0	0	0
Konnick, M.	LT	TCBA	.000	.250	.000	.250	.000	.333	.286	-.8	.1	.3	8	0	0	0	0
Derrick, C.	LT	TCBA	.000	.000	.000	.000	.000	.000	.000	-1.3	-.0	-.0	5	0	0	0	0
Kelly, B.	LT	TCBA	.000	.250	.000	.250	.000	.333	.333	-.4	.1	.6	4	0	0	0	0
Hearn, E.	LT	TCBA	.000	.000	.000	.000	.000	.000	.000	-.5	.0	.0	2	0	0	0	0
McHale, M.	LT	TCBA	.000	.000	.000	.000	.000	.000	.000	-.3	.0	.0	1	0	0	0	0
Walker, D.	SO	TCBA	-	-	-	-	-	-	-	.0	-	-	0	0	0	0	0
London Tecumsehs			.237	.297	.297	.594	.060	.158	.524	-169.1	488.2	3.0	5887	24	41	93	46

WRETFORD

PROFITABILITY

WRETFORD



HIGHLANDERS



Hereford Highlanders Draft Picks

2-John Henry	3-John Flynn	4-Hack Simmons
5-Lou Schettler		6-Specs Harkness
7-Elmer Zacher		8-Harry Fanwell



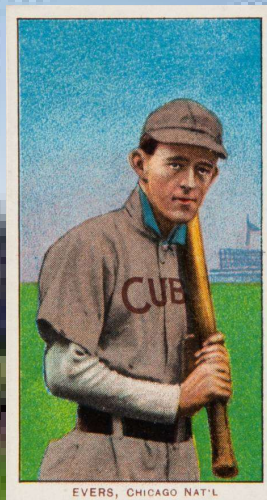
Lobert, 3b Cincinnati Nat'l.



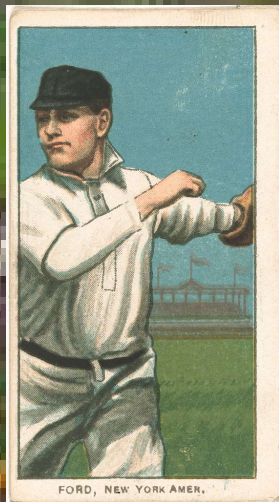
FLETCHER, N. Y. NAT'L



PASKERT, CINCINNATI



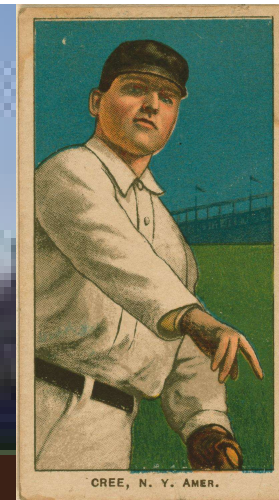
EVERS, CHICAGO NAT'L



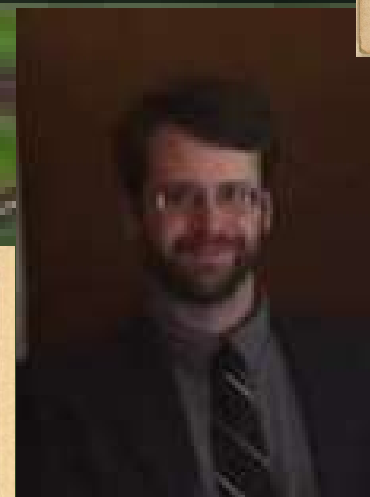
FORD, NEW YORK AMER.



BILL RARIDEN
C.—New York Nationals
136



CREE, N. Y. AMER.



1-Dode Paskert, CF
2-Johnny Evers, 2B
3-Birdie Cree, RF
4-Hans Lobert, 3B
5-Doc Lyon, 1B
6-Bill Rariden, C
7-Hack Simmons, LF
8-Art Fletcher, SS
9-Russ Ford, P

Starting Lineup
Opening Day 1911
Hereford
Highlanders

10 Pitchers	Tm	Lg	W	L	PCT	SV	ERA	G	GS	CG	SHO	QS	IP	H	R	ER	HR	SO	BB
Fanwell, H.	HH	TCBA	0	0	-	1	1.59	12	0	0	0	0	17.0	19	6	3	0	9	3
Ford, R.	HH	TCBA	21	12	.636	3	1.68	41	34	30	1	25	311.1	166	93	58	2	171	87
Ames, R.	HH	TCBA	10	13	.435	0	2.78	34	24	14	1	13	210.1	160	93	65	1	103	80
Moore, E.	HH	TCBA	11	26	.297	0	3.06	41	35	20	1	16	288.0	222	143	98	2	227	124
Hall, S.	HH	TCBA	10	17	.370	0	3.36	29	25	11	1	9	200.2	175	114	75	6	79	78
Lush, J.	HH	TCBA	7	11	.389	0	4.03	29	22	7	0	6	194.1	221	118	87	3	56	69
Schettler, L.	HH	TCBA	0	12	.000	2	4.24	22	11	3	0	5	87.0	98	63	41	1	58	44
Wilhelm, K.	HH	TCBA	0	1	.000	0	5.51	8	0	0	0	0	16.1	16	13	10	0	7	5
Graham, B.	HH	TCBA	0	0	-	0	5.68	10	0	0	0	0	31.2	48	24	20	1	13	14
Harkness, S.	HH	TCBA	1	2	.333	0	7.32	8	3	0	0	1	19.2	27	19	16	0	10	7
Hereford Highlanders			60	94	.390	6	3.09	234	154	85	4	75	1376.1	1152	686	473	16	733	511

10 Pitchers	Tm	Lg	SUP/9	R/9	ERA	BF/9	BR/9	H/9	BB/9	SO/9	HR/9	ERPT	OBA	BF	BR	IBB	HB	WP	BK
Fanwell, H.	HH	TCBA	.0	3.18	1.59	38.1	11.1	10.1	1.1	4.8	.00	3.0	.275	72	21	1	0	1	0
Ford, R.	HH	TCBA	3.6	2.69	1.68	35.4	7.6	4.8	2.4	4.9	.06	52.2	.154	1223	263	3	13	1	0
Ames, R.	HH	TCBA	2.9	3.98	2.78	37.8	10.4	6.8	3.2	4.4	.04	9.5	.208	884	242	5	7	2	0
Moore, E.	HH	TCBA	3.3	4.47	3.06	39.0	11.2	6.9	3.7	7.1	.06	3.9	.207	1247	357	5	16	4	0
Hall, S.	HH	TCBA	3.1	5.11	3.36	39.2	11.5	7.8	3.3	3.5	.27	-4.0	.231	874	256	4	7	4	0
Lush, J.	HH	TCBA	4.0	5.46	4.03	40.9	13.8	10.2	3.0	2.6	.14	-18.2	.284	883	299	4	13	4	0
Schettler, L.	HH	TCBA	1.4	6.52	4.24	41.5	14.4	10.1	3.9	6.0	.10	-10.2	.291	401	139	6	3	1	0
Wilhelm, K.	HH	TCBA	.0	7.16	5.51	39.1	12.1	8.8	2.8	3.9	.00	-4.2	.250	71	22	0	1	0	0
Graham, B.	HH	TCBA	.0	6.82	5.68	44.1	17.6	13.6	4.0	3.7	.28	-8.8	.345	155	62	0	0	1	0
Harkness, S.	HH	TCBA	.5	8.69	7.32	41.6	16.0	12.4	3.2	4.6	.00	-9.0	.338	91	35	0	1	0	0
Hereford Highlanders			3.1	4.49	3.09	38.6	11.1	7.5	3.2	4.8	.10	14.2	.224	5901	1696	28	61	18	0

28 Players	Tm	Lg	AVG	G	AB	R	H	2B	3B	HR	TB	RBI	SO	BB	ASB	SB	CS	SBP	GDP
Wilhelm, K.	HH	TCBA	.333	8	3	0	1	1	0	0	2	0	0	1	0	0	0	-	1
Lobert, H.	HH	TCBA	.317	58	221	27	70	7	3	1	86	31	5	16	33	24	9	72.7	2
Paskert, D.	HH	TCBA	.293	124	488	68	143	23	2	3	179	57	55	55	41	31	10	75.6	4
McInnis, S.	HH	TCBA	.289	36	83	13	24	4	7	0	42	17	10	8	3	2	1	66.7	1
Phelps, E.	HH	TCBA	.280	88	271	28	76	7	1	0	85	26	27	33	8	3	5	37.5	3
Lush, J.	HH	TCBA	.278	31	72	7	20	0	4	0	28	8	8	2	2	2	0	100.0	0
Rariden, B.	HH	TCBA	.261	33	111	7	29	7	3	0	42	7	15	11	0	0	0	-	4
Moran, P.	HH	TCBA	.259	50	166	18	43	7	2	0	54	22	12	11	4	3	1	75.0	2
Moore, E.	HH	TCBA	.257	41	101	9	26	3	3	0	35	7	25	3	0	0	0	-	2
Engle, C.	HH	TCBA	.253	112	396	37	100	17	7	3	140	35	30	27	14	11	3	78.6	11
Ford, R.	HH	TCBA	.252	41	103	9	26	2	4	0	36	13	17	10	4	2	2	50.0	0
Cree, B.	HH	TCBA	.235	121	480	61	113	20	13	2	165	48	47	35	34	27	7	79.4	5
Simmons, H.	HH	TCBA	.227	63	203	15	46	3	1	0	51	16	23	13	2	2	0	100.0	3
Flynn, J.	HH	TCBA	.225	91	324	35	73	9	1	2	90	55	28	31	10	8	2	80.0	4
Evers, J.	HH	TCBA	.221	109	398	71	88	8	8	0	112	29	18	82	22	16	6	72.7	5
Lyon, D.	HH	TCBA	.219	146	557	33	122	18	5	4	162	55	102	40	0	0	0	-	25
Hartsel, T.	HH	TCBA	.208	93	259	38	54	12	4	0	74	26	42	55	10	7	3	70.0	6
Fletcher, A.	HH	TCBA	.194	129	449	31	87	4	1	0	93	23	20	14	28	19	9	67.9	6
Hall, S.	HH	TCBA	.191	30	68	12	13	3	0	0	16	7	9	3	2	2	0	100.0	1
Henry, J.	HH	TCBA	.171	11	35	2	6	0	2	0	10	2	3	1	1	1	0	100.0	4
Getz, G.	HH	TCBA	.167	60	186	11	31	1	1	0	34	8	22	13	0	0	0	-	1
Ames, R.	HH	TCBA	.143	34	70	5	10	3	0	0	13	1	25	3	0	0	0	-	3
Zacher, E.	HH	TCBA	.139	39	108	6	15	1	1	0	18	6	15	14	3	2	1	66.7	1
Schettler, L.	HH	TCBA	.087	22	23	1	2	0	0	0	2	0	8	1	1	0	1	.0	1
Lumley, H.	HH	TCBA	.000	7	11	1	0	0	0	0	0	0	1	3	0	0	0	-	0
Graham, B.	HH	TCBA	.000	10	13	0	0	0	0	0	0	0	2	0	0	0	0	-	0
Harkness, S.	HH	TCBA	.000	8	3	0	0	0	0	0	0	0	1	0	0	0	0	-	0
Fanwell, H.	HH	TCBA	.000	12	1	0	0	0	0	0	0	0	0	1	0	0	0	-	0
Hereford Highlanders			.234	1607	5203	545	1218	160	73	15	1569	499	570	486	222	162	60	73.0	95

28 Players	Tm	Lg	AVG	OBP	SLG	OPS	ISO	SECA	TA	RCON	RC	RC/G	PA	IBB	HBP	SH	SF
Wilhelm, K.	HH	TCBA	.333	.500	.667	1.167	.333	.667	1.000	.6	.6	5.1	4	0	0	0	0
Lobert, H.	HH	TCBA	.317	.362	.389	.752	.072	.213	.784	6.9	33.0	5.3	245	0	1	5	2
Paskert, D.	HH	TCBA	.293	.363	.367	.730	.074	.230	.744	13.4	71.9	5.3	555	2	2	4	6
McInnis, S.	HH	TCBA	.289	.358	.506	.864	.217	.325	.885	4.9	15.6	6.7	95	1	2	0	2
Phelps, E.	HH	TCBA	.280	.355	.314	.668	.033	.148	.601	-1.7	32.4	4.2	312	0	1	2	5
Lush, J.	HH	TCBA	.278	.293	.389	.682	.111	.167	.615	-.3	8.9	4.4	77	0	0	2	1
Rariden, B.	HH	TCBA	.261	.333	.378	.712	.117	.216	.628	.9	13.6	4.2	124	0	1	1	0
Moran, P.	HH	TCBA	.259	.302	.325	.627	.066	.145	.540	-3.5	17.0	3.5	181	0	0	2	2
Moore, E.	HH	TCBA	.257	.279	.347	.625	.089	.119	.494	-3.1	9.6	3.1	111	0	0	7	0
Engle, C.	HH	TCBA	.253	.298	.354	.652	.101	.189	.574	-5.1	41.1	3.5	432	0	0	5	3
Ford, R.	HH	TCBA	.252	.336	.350	.686	.097	.194	.646	-.7	13.0	4.3	118	0	3	2	0
Cree, B.	HH	TCBA	.235	.295	.344	.639	.108	.223	.617	-6.0	52.3	3.6	530	1	7	5	3
Simmons, H.	HH	TCBA	.227	.293	.251	.545	.025	.099	.456	-9.3	16.5	2.7	228	0	7	3	2
Flynn, J.	HH	TCBA	.225	.285	.278	.563	.052	.167	.502	-12.2	29.1	2.9	370	0	0	5	10
Evers, J.	HH	TCBA	.221	.356	.281	.637	.060	.291	.664	-.6	48.4	4.0	491	0	3	5	3
Lyon, D.	HH	TCBA	.219	.269	.291	.560	.072	.144	.439	-26.8	39.8	2.3	602	0	0	0	5
Hartsel, T.	HH	TCBA	.208	.346	.286	.632	.077	.305	.636	-1.6	29.6	3.7	318	0	0	3	1
Fletcher, A.	HH	TCBA	.194	.219	.207	.426	.013	.067	.337	-43.3	20.7	1.4	477	1	1	12	1
Hall, S.	HH	TCBA	.191	.247	.235	.482	.044	.118	.411	-4.5	4.5	2.0	77	0	2	4	0
Henry, J.	HH	TCBA	.171	.189	.286	.475	.114	.171	.364	-2.7	.9	.7	37	0	0	0	1
Getz, G.	HH	TCBA	.167	.225	.183	.408	.016	.086	.308	-19.0	8.4	1.4	202	1	1	2	0
Ames, R.	HH	TCBA	.143	.178	.186	.364	.043	.086	.254	-8.4	1.9	.8	74	0	0	1	0
Zacher, E.	HH	TCBA	.139	.242	.167	.409	.028	.167	.368	-10.5	5.4	1.5	126	1	1	2	1
Schettler, L.	HH	TCBA	.087	.125	.087	.212	.000	.000	.130	-4.6	.1	.1	26	0	0	2	0
Lumley, H.	HH	TCBA	.000	.214	.000	.214	.000	.273	.273	-1.8	.2	.4	14	0	0	0	0
Graham, B.	HH	TCBA	.000	.000	.000	.000	.000	.000	.000	-3.3	.0	.0	13	0	0	0	0
Harkness, S.	HH	TCBA	.000	.000	.000	.000	.000	.000	.000	-.8	.0	.0	3	0	0	0	0
Fanwell, H.	HH	TCBA	.000	.500	.000	.500	.000	1.000	1.000	.1	.1	3.5	2	0	0	0	0
Hereford Highlanders			.234	.301	.302	.602	.067	.180	.543	-143.1	500.4	3.2	5844	7	32	74	48

HOME
STRETCH



Subject: Re: TCBA Origins Results Grand Rapids v Waukesha -- For all the marbles . . .

Jeff, heading through town to spend the weekend chasing rug rats, allowed us to play face to face.

A different kind of write up, highlighting noteworthy and bizarre factoids . . .

Those interested in a three way playoff will have to read to the end.

Factoid 1: Ralph "Ducks on the" Pond. Waukesha LF and Wisconsin native was 8 - 20 2 RBI and a run in the series. Historically, a played 1 game for Red Stockings and was 1-4 with a SB and a strikeout.

Factoid 1B: Pond had 1 error on one chance for the Red Stockings, and a 4 base error in game 5 vs Grand Rapids to Roger Breshnahan in the 7th

Factoid 2: Honus Wagner. Known for his speed, hitting and defense (a grade 8 SS) was 10-20 with 2 doubles a homer, and 4 walks, 2 SB and a caught stealing in game 5. Add in 5 errors.

Factoid 3: Addie Joss. Literally pitching from his death bed (He died in April 14, 1911) Won game 1 on a 4 hit shutout, a no no into the 7th. Came back on short rest in game 5 and went 8 1/3.

Factoid 4: Eddie Cicotte was only 24-4 on the season. Eddie sacrificed (his body) trying to squeeze in a game 5 run, Buddy Groom plunked him.

Factoid 5: MLB was playing with the ball. Three HRS by the two teams in game 2. (Wagner, Stahl, and Devlin.)

Factoid 6: Freeman 4 - Wolverines 0 Gm 1 (Freeman are 2 out with 4 to play)

Factoid 7: Freeman 4 - Wolverines 9 Gm 2 4 insurance runs in the 8th. (Freeman 3 out with 3 to play)

Factoid 8: Freeman 5 - Wolverines 3. Gm 3 (Freeman 2 out with 2 to play)

Factoid 9: Freeman 8 - Wolverines 5 Gm 4 (Freeman 1 out with 1 to play.)

Factoid 10: Joss v Cicotte. Gm 5 (154) Scored tied 2-2 after 8

Factoid 11: Groom's HBP to Cicotte loaded the bases.

Factoid 12: Bresnahan (0-10) in the series, singled in the lead run.

Factoid 13: Johnny Bates add an insurance RBI

Factoid 14: Freeman got the tying run to the plate with 1 out in the 9th.

Factoid 15: Mike Mowrey popped out to end the game and the season.

Factoid 16: Congrats, Jeff.

Factoid 17: In 1907, Mirthmakers won the pennant by 1 over Waukesha and 3 over Grand Rapids

Factoid 18: in 1910, Grand Rapids wins the pennant by 2 over Waukesha and ?? over Pittsburgh

Factoid 19: A Pittsburgh sweep over Mimosa would put them 1 out.

**DIVISION
CHAMPS!**



Three of our four Divisions came down to the final series. We had the possibility of a 3-way tie in the Kirwin Division, but Grand Rapids prevailed on the final day, defeating Waukesha to clinch the title, eliminating both the Freeman and Pittsburgh. Bradenton maintained their lead over Mexicali's final charge under Al Keefer's guidance to win the McCorkindale Division. That left the final drama in the Mahley Division, where the South Starrucca Ainspans took a 1-game lead over Hyde Park into the final five games of the season. Here's a day by day recap of the games between

Cleveland Spiders @ South Starrucca

and

Long Island @ Hyde Park



Well, we have a 5 game series with the eight legged insects, that will determine the fate of the Mahley Division. (Along with the HP/LI series results)

Starrucca holds a 1 game edge over HP after 149 games, but the Vities have an easier path to the Finish Line.

Probably the main barrier between the Ainspan's and Division Victory is going to be Big Ed Walsh. Gr 18yz with a 1.17 ERA and 27 wins, the only thing I know for sure is that he isn't going to get 30 wins this season. He is going to get two starts though.

Our only hope in these games is that the Spiders offense continues as the leagues worst. He's at the bottom of the 16 teams in the league. Starrucca has good pitching overall, but nobody of Walsh's caliber. Maybe they won't need it.

Here we go!

GAME 1: Big Ed Walsh will match up against Starrucca's Louis "Disco" Drucke. He's been the Spans best pitcher this year with a 1.97 ERA and 19 wins. He's love to get his 20th here.

Bot 1....Oh Boy! Walsh sets the tone, he NAILS my leadoff hitter right off the bat, and knocks him out of the game for the rest of the day.

Devore is summoned to run for him....and he STEALS secondbase immediately. We want to make Walsh pay for that pitch to the ribs.

But that's as far as Devore will get, as Walsh sets down the next three batters.

Bot 3...no score so far; Starr leads off with Tom Jones, the least likely hitter in our lineup to get an XB hit, and he triples off the wall. We'll need luck like this to get to Walsh. Jones will score on a sac fly, and after 3 innings, its 1-0 Starr.

Bot 4...Becker grounds to Cleve shortstop, who BOOTS the ball for an error. Home Run Baker follows with a double to score Becker, and SS is up 2-0!!!

Top 7....Spiders Kitty Branfield leads off with a gift as Span pitcher muffs his grounder back to the box, and Kitty is on. He makes his way around the bases and comes around to score on a sac fly, making it 2-1 Starrucca. The run was unearned, so Drucke will get advanced for the top of the 8th.

Okay, we go to the 9th inning, Drucke advanced to a Grade 20 and clinging to a 2-1 lead.

Top 9...it'll be the 2-3-4 of the Spider batting order:

-Turner up (not Tina)...he doubles. !!!!!

Now, I gotta stop here and give some background. Turner is about the least likely batter in the Cleve lineup to get an xbase hit...and he's now got TWO of them today. For the season, he hit 5 doubles and 3 triples total. He picked a great time to load up on protein powder before the game. :-0

-Tommy Leach up (probably the best hitter on the Spider team)...he squares and tries to sac. Pops up to the pitcher for one, who turns and throws to second....SAFE! Turner just gets back to second. Almost a double play.

-Kitty Bransfield up (2nd on the team in rbi's....he washes his face and comes to the plate)....he grounds to short, who throws to first, and is OUT.....but the runner, Turner, moves over to third. There was anxiety in the dugout, as my shortstop, Doolan, has made 55 errors this season, plus one more today! A grounder to short is an adventure this season that leads to the creation of new swear words. :-0

-John Titus up (he has nothing of note to mention other than that this is his 620th plate app of the season.) Drucke has to pitch from the stretch to keep the runner on third honest.....

* J. Titus facing L. Drucke, T 9th, 2 Outs, Runner on 3rd, Behind 1-2

Drucke watching Turner at third ... the pitch ... there's a drive to deep left

it's going to be a long run for Devore ... near the warning track ... but he says he's got it

and he does ... against the wall ... and that's out number three and the game

FINAL SCORE : Spiders 1, Ainspans 2

Whew!

Well, we beat Walsh the only way one can beat Walsh, by a very close, very low score. Drucke matched him inning for inning, and comes up with his 20th win of the season!

We will be seeing Walsh again, in Game 4, and I can't say I'm looking forward to it!

Trailing the division-leading Ainspans (86-63) by a single game, the Vitamen (85-64) need to play their best, even with the cellar-dwelling (44-105) Islanders as the opponent. There is really no margin of error.

The Vitamen gathered around the radio, waiting for news from South Starrucca. Just moments after the announcement of the 2-1 Ainspan victory in Game 1, the umpires called "Play Ball" in Hyde Park.

Opening the series on the mound for the Islanders is 13-game winner Jack Warhop (13-16). He represents 30% of the team's wins this season, and he has won 3 of his last 4 starts. Warhop has faced the Vitamen 4 times this season, with a record of 1-3. He was bullied by the Vitamen in his previous 2 starts, losing 19-2 and 9-0.

Opposing him for Hyde Park is Charlie Smith (14-6). Smith has won his last 6 decisions, including a 4-1 complete game win over the Islanders on August 4th.

Right away the Islanders get runners to 2nd and 3rd, but Jimmy Mac flies out to deep CF to end the threat. It's Jimmy Mac again in the 2nd inning, but this time using his foot instead of his glove, booting a groundball that gives the Vitamen their first baserunner. Lord steals second (#38) and scores on Wallace's single. HP leads 1-0!

There was a tense moment in the 2nd when Warhop drilled Charlie Smith with a fastball. A lot of shouting and stepping from both sides as Smith wandered to first, sore but functional, for now. That loaded the bases – a chance for HP to take the game right there... but Warhop shuts the door.

The Islanders strutted about like tough guys, Jake Daubert proving it with his 7th home run in the top of the 3rd, tying the score at 1-1. Their gloves, however, were equally rough (5 errors). After Killefer dropped a pop-up in front of home plate to open the bottom of the 3rd, Schulte's FC scored Hooper. Then Lord's single to right field was misplayed by Moran, allowing another run to score. Vitamen lead 4-1!

Trailing 4-1 in the 5th, Warhop once again hit a batter, this time it was Bobby Wallace, drawing a warning from the umps, but no serious injury.

In the bottom of the 7th, trailing 5-1, Warhop finally succumbed to the pressure of the game, departing with (he says) a 5-game injury, resulting in a lot of chirping from the VitaBench questioning Warhop's manhood.

With the run support, Charlie Smith (15-6) maintained command, closing out a complete game 5-hitter. HP wins 5-1 and keeps pace with the Ainspans.

Tm	R	H	E
LI	1	5	5
HP	5	8	0

After hearing of HP's win in Gm1, we sally forth to Gm2 with our positions in the standings unchanged...but another day off the remaining schedule. We are now down to 4 games left, and Starrucca would be happy at continuing this status quo for a few more!

#2 PreGame:

-Spiders will throw Cy Morgan (Gr 17w). He will try his best Cy Young impersonation, though without the control. We aren't going to get that many hits against him, but we're going to try and walk more people unscathed across Home Plate than you'd see at the Mexican border.

Cy has compiled a .500 record this year off of a 2.37 ERA. We do not fear him as we do Big Ed Walsh.

-Ainspans will counter with Doc White (Gr 8z). A polar opposite in that he gives up hits but is very stingy about walking people. A lefty, with a 3.34 ERA and an uninspiring 8-13 record, we comfort ourselves a bit with the fact that he tallied some of that before coming over in a trade deadline deal from the Feeble realms of Long Island.

Here we go!

GAME 2:

Bot 1....'sigh' Morgan walks two and a double drives one in. (should have been 2, but Chicken Stick is afraid to send the second runner home and the next two batters make outs. We may regret this move later). But so far, the 'walk' strategy is working.

Bot 2....Wow! Big Inning for Starrucca, Morgan a 'victim' as the normally reliable Spider fielders have some breakdowns out there.

Single and error.....out.....out.....(that's two outs).....double scores one.....strike out/BUT the catcher drops it, batter safe at first. Walk.....and a bases clearing TRIPLE by Beals Becker!

Becker has driven in 4 of 5 Span runs, and Morgan has allowed 5 runs but only 1 earned.

-Thru SIX complete; its 5-0 Starrucca and Doc White is getting out of a few jams, while now advancing to a grade 13. And the game finishes up at a 6-0 Starrucca WIN as Doc White tosses 8 shutout innings.

Cy Morgan deserved better, but the 5 walks did not help his case any. And the Cleve offense is going to have to do much better in the future.

And like the song by WHAM in the early 1980's: "Wake me Up before you Go-Go!"the Spiders better muster their offense before the season is done and gone.

-the ball goes back to Hyde Park for Game 2.

So, the Ainspans have won another one. Still three more to go in that series.

The Vitamen need to take care of their own business, no matter what happens up north.... Control what we can control.

Game Two - Kirby White (8-11) gets the nod for the Islanders, while King Cole (23-9) on short rest (30) is Hyde Park's response. It's a King Cole gamble, but the Vitamen are planning for a potential tie-breaker game with the Ainspans, with Cole possibly available on 3-days rest. But first, they need to get past White and the determined Islanders. Hopefully the short rest won't be a factor.

But the gamble does not pay off! Cole survives a Zack Wheat double in the 1st and a 2-out walk to Browne in the 2nd, but he can't get past Wheat a 2nd time. Zack's bases-loaded triple in the 3rd puts the Islanders on top 3-0!

Meanwhile, the VitaBats are silent. A couple of walks and a minor single, but no runs. None, that is, until Schulte's triple leads to a run in the 4th following a run-scoring wild pitch from White, only his 4th this season.

Down 3-1, the Vitamen turn to their league-leading defense to try and turn things around. Kirby White led off the top of the 5th with a double, moving to 3rd with one out. With the infield pulled in, a grounder to 2nd, 2b-9 Dave Shean throws home to nab White for the 2nd out. Then Cole picks off the runner at 1st! No runs score. But it is still 3-1 LI.

Energized by the team's defensive prowess, Hooper led off the 6th with a single, scoring one out later on Schulte's triple. Then Lord singled to tie the game at 3-3! Then the flip side of the defensive coin appeared, the side with the Islanders logo. A 2-out single to left was misplayed by Browne, allowing Wallace to score all the way from 1st. HP takes the lead, 4-3!

No quit in these Islanders, however. Moran opens the 7th with a single, but he is tagged out at 2nd on a solid throw from Hooper. With 2 outs, the short-rested Cole begins to fade, walking two batters. If he is not pulled now, he won't be available for any potential tie-breaker. He's obviously tiring... So the change is made, bringing on Fred Olmstead (10-9, 3 saves.) Moriarty drills Olmstead's first pitch to right.. but Dave Shean is right there to snag the L4 3rd out. Olmstead ends the threat. Phew!

White was still pitching for Long Island in the 7th, but Schulte's 2-out double plated a 5th run and ended White's day. He was replaced by Jiggs Parson (2-1, 2 saves), who allowed an rbi single to Lord. 6-3 HP.

Slim Sallee took the mound for HP in the 9th. He made things interesting, allowing a single to Moran, but no more. Vitamen win Game 2, 6-3.

Three games left in the regular season. C'mon, Spiders! Just get us one win, and we will do the rest...

With news that HP also won their Gm2....that puts both of us at 2-0 for this series. Standings the same; SS one game up, but, only 3 games left in the season. Better to be the Chasee at this point, rather than the Chaser.

Starrucca coming off a nice offensive outburst last game, scoring six runs with ten hits. We DO lead the league in Runs per Game, so its not unexpected, but very appreciated.

The Spiders have posted ads around the ballpark that they are willing to sell two of their eight legs for a couple of runs. (any more legs than that, and they'll have trouble making it around the basepaths!) :-0

-Gm3 Pregame:

Cleve will throw Harry Gaspar (Gr 10z) who doesn't walk more than he should, doesn't give up more hits than he should, doesn't have a much higher ERA (2.95) than he should..... he just has a very hard time getting as many WINS as he should. 9-18 !?!? wtf?

He had a 7 game NO WIN streak, meaning starts in a row without a win, and that rates as tied for 3rd longest in the league this year! AND like Rodney Dangerfield, he gets no respect. Or at least he gets no run support. Gaspar gets the 4th WORST run support in the league.

These are NOT good combinations. Starrucca would normally be putting this one in the 'win column' pregame.....but we also know Baseball is a funny game, and what has held true for the last 151 games, doesn't mean things will continue along the same path for another 3.

But, all those underlying numbers sure do explain a 9-18 record!

Ainspans counter on the mound with Jack Quinn. (Gr11 z) He too is a bit short in the W-L column with a 13-14 Record and no underlying numbers that would cause the lack of wins to happen. On the contrary, he has the 9th BEST Run Support behind him in the league??? So we tend to hit well behind him, but he still loses the game?

A headscratcher. Lets see how this one plays out.

GAME 3:

Top 1.....Cleve loads the bases with two outs.....and Dots Miller bounces out to the pitcher to end the inning. We breathe a big sigh of relief.

Bot 1.....Ouch! Cleve pitcher Gaspar nails my batter, Devore, in the ribs! Takes him out of the next FIVE games!!! Devore is a classic top of the order hitter. He will be missed, but hopefully the rest of our batters will be pissed.

Bot 2....Starr gets a single, then a bad throw by the Cleve pitcher for an error give us a first and third with nobody out situation. We end up scoring one on a sac fly. We wanted more, and Cleve is happy to get out of it with just one....so I guess everybody is happy. SS up 1-0.

Top 3.....Cleve gets a two out double, two out single, and just like that; it's a tie game...1-1.

Bot 3.....Ainspan Larry Doyle walks. Steals second; throw skips into the outfield for an error, Doyle goes to third. Beals Becker hits a twisting fly to right, on the line....for out #2, and Doyle takes off for home.....he's SAFE! Spans take a chance, and it pays off; Starr regains the lead 2-1.

Bot 4....Micky Doolan (NOT the one on the Monkees) leads off with a double. Gets sac'd over to third, and with one out, he's willing to do whatever necessary to score. But Hohnhorst, hitting for Tom Jones, mightily strikes out!! Oh, the horror. Leaves the pitcher, Quinn, to hit, and its way too early to pull him for a pinch hitter.

Oh boy! We get a huge break. Cleve makes their THIRD error of the game, and we're only in the 4th inning! Spans haven't been much better, with 2 of them already, but Gaspar needs some gloves behind him if he's expected to win. Spans take a 3-1 lead heading into the 5th.

Top 5....Cleve ain't going down without a fight.

Tommy Leach singles, gets moved to second, and with two outs, comes speeding across home plate on a single by Big John Titus....or maybe its John Big Titus, I can't remember, too many distractions! Cleveland closes the score to 3-2.

Top 7....its the Spiders Tommy Leach up again, and he lashes a double with one out. Bransfield moves him to third with two outs, and it'll be up to Titus again. Titus with a good eye, WALKS.
Now 1st and 3rd for Dots Miller. Dots hitting .204 on the season....he's due.
And now, he's doo-doo. Miller flys out harmlessly to leftfield to end the inning.
Bot 8....Spans Jim Delehanty walks to lead off. Beals Becker goes hit and run and TRIPLES him home, before getting thrown out at home trying to stretch it! Another ribbie for Beals. Big, big run....now 4-2 Starrucca.
Top 9....the Spiders send up their 1, 2, and 3 batters.....and Jack Quinn sends them back to their dugout, 1, 2, and 3. Quinn tosses a complete game win in a Classic 1910 ballgame with a variety of singles, walks, errors, sac flys, and sac bunts. Onesy-Twosy baseball with Starrucca getting more onesies than Cleveland today.
Quinn evens his seasons record at 14-14, while Gaspar ashamedly moves to 9-19. But he pitched better than the loss indicates.
Bounce the ball back to HP for their turn.



only 2 left

Game Three – Islanders send their golden boy, Ray Golden (3-17) to the mound to face Bob Ewing (14-13). Ewing has faced LI three times this season, pitching three complete game victories. Golden had one start against the Vitamen, a 10-4 loss in August. In that game Golden struck out 11 batters, allowing 13 hits and 5 walks over 7.2 IP.

Hyde Park spotted Ewing to an early 2-0 lead with a pair of runs in the 1st inning. Hooper's double earned one, but it was an E9 from Moran that gifted the Vitamen with another. 2-0 right away. But that "right away" worked both ways. Jimmy Mac broke out of his 0-8 slumber with a 2nd inning single. He scored easily on Killefer's triple. The Isles' catcher soon scored on his own, thanks to a passed ball. Rapidly, and somewhat sloppily, the game was tied 2-2 after 2 innings.

In the 3rd, Daubert and Wheat singled. Sweeney followed with an infield dribbler that resulted in a run scoring. LI led 3-2. No further runs scored that inning, but in the process, Ewing hit Moran with a hard ball. Moran took the full brunt of the pitch, all the way to the bus station. He'll need 19 days to get over the bruise. But it didn't feel too bad at the time; his team led 3-2.

The score was still 3-2 heading into the 6th when the VitaWheels began to spin out of control. The Isles 8th and 9th place hitters each singled, setting up Moriarty, who doubled them both home. That was the end of the day for Ewing, as Slim Sallee was brought on to plug the dyke. LI had built a hefty 5-2 lead, while the Golden Boy was rolling right along through the HP batters, his grade advancing from 4 to 9 in the process.

Facing the freshly upgraded Golden, Lord reached base on an E2. Shean singled Lord to 3rd, and then stole second. A passed ball scored one run, but then **DISASTER!** Catching stalwart Paddy Livingston was hit by a Golden pitch, knocking him out of the game. Out of the series. Out of the season (27 days.) That really hurts. Stevenson can handle the glove work, but he is no match for the productive Livingston. Newnam ran for Livingston and was caught stealing. With two out and down two runs, pitcher Slim Sallee was left in to bat for himself, a bit of a white flag move trailing 5-3. Slim never moved his bat, drawing a Golden walk. That loaded the bases for Hooper. Harry mashed a legit triple, scoring all three runners! The white flag was pulled down. HP now had a 7-5 lead!!!

The Vitamen scored 5 more runs in the 7th to take a 12-5 lead, but Sallee himself committed 3 errors, allowing 3 unearned runs, and the Islanders crawled back to within 4 runs, 12-8. Harry Krause came on in relief of Sallee in the 8th and survived 2 innings to close out a thrilling 12-8 comeback win for the Vitamen. Sallee (5-7) earned the win. The loss of Livingston will be a tough one to deal with, but play-off hopes are still alive in Hyde Park, with only two games remaining.



1 DOWN, 2 TO GO

State of the Division Race:

BOTH HP and Starr have won their first 3 games of the series. Vities remain one back, but the clock on the wall is ticking.

For HP to WIN the division....he has to win both remaining while Starrucca loses both remaining games.

For HP to TIE in the division....The Spans will probably have to win only 1 while HP wins their last two.....OR Spans will have to lose 2 while HP wins 1. There's not too many other options here.

Game 4 Pregame:

-Big Ed Walsh comes back to make his second start of the series. He's got 38 WB's and he is threatening anyone who comes out to the mound who tries to remove him from the game before its over....and that includes extra innings!!!!

-Spans counter with Doc Crandall (Gr 13/15*Z M) with a 13-14 Record! He seems to be one of a few quality starting pitchers that can't even come up with a .500 output? How the heck does this happen with teams that are in the upper half of the Division? Doc has that M after his grade (probably an abbreviation for "Motherf88888r!" which is what he's been yelling after giving up another Tater! He's given up 11 so far, which is only ONE less than the MOST in the league. That honor belongs to Buddy Groom of Waukesha, with a dozen. Maybe THAT'S why Crandall has had trouble winning as many as he loses!

Against Ed Walsh, its only going to take one of those M rated dingers against Crandall for Cleve to emerge victorious today.

"Just roll a 6!" Mgr Jennings tells the Spiders, "And Doc Crandall's letter will take care of the rest!".

-Ainspan outfielder, Devore, will be sitting for the next 4 days with a boo boo from yesterdays hit by pitch. That'll hurt, but, we do have a reputable backup, so it won't bury us.

Here we go!

GAME 4:

Bot 1.....In game 1, Spans Steve Evans led off the game against Walsh by getting drilled in the head. He had to leave the game. Today; he gets his revenge. First pitch he gaps a double in the gap and he's standing on secondbase glaring at Walsh with a smug smile across his face.

But Big Ed Walsh didn't get this grade 18 for being a Putz.....he strikes out the next two batters and ends the inning with a groundout. Evans never got further than secondbase. (which sounds similar to my high school dating life)

Bot 2....A grounder right at Spider's Kitty Bransfield goes right between his legs, under his tail, and on into rightfield for a Bill Buckner Error. Dooin follows with a hit and run single, and we again have Walsh a bit on the ropes, thanks to his porous defense.

A Span single scores one run....but that's all they get! SS leads 1-0 after 2 inn.

Top 3....Spider leadoff hitter, Mitchell, doubles off the wall. (it almost went over) A FC and a groundout brings him into home, and it's a tie ballgame. 1-1

Bot 5.....still 1-1.....A single by the Span #8 hitter, and then a grounder back to Ed Walsh....Big Ed makes a Big E as he throws the ball past the firstbaseman. Span runners on 1st and 3rd, nobody out. "Another fine mess you've gotten us into, Ollie." Can Walsh work his way out against the top of the order?

Well, somewhat.

Evan's grounds into a double play, but the runner on third scores. Walsh really couldn't have hoped for much of a better outcome than that. Spans up 2-1. And its bringing up memories of the final Gm1 score.

Top 8.....Still Spans up 2-1.....times starting to run out, Cleve needs something within the next six outs.

Spidies get a leadoff single, but the next batter tries to sac, and they pop it up to the catcher who snags it in the air, fires down to first, and DP's the runner diving back to first! Huge play!

Bot 8....Ed Walsh sets down the first two Span batters, and his mind drifts to the 9th inning where he will be leading off. But Beals Becker takes advantage of the distracted Walsh, and puts a charge into the meatball as it comes across the plate. Its going, going, GONE! Over the wall for a big Insurance Run. Walsh had given up 2 runs up to this point, neither of them earned as Cleve has made 3 errors, but this dinger was the Real Deal. Spans up 3-1.

Top 9....here we go...Doc Crandall is tossing a beauty, only giving up 2 hits and 1 run so far.

-Ed Walsh due up, gets called back for a pinch hitter. Its Craig Shifflett. Huh?? What the heck? I can see four other batters on the Cleve bench that I'd pick before I put CS in there. (hey, Craig's initials are the same as his teams!)

-Shifflett grounds out for out #1. (Blame Ned Jennings)

-Terry Turner grounds out to short for out #2.

-Down to their last out.....John Titus comes to the plate. (If Starr wins this game, it guarentees them at least a TIE for the Division) and (a little known fact; you can't spell Titus without Tits)

Titus grounds to the Span shortstop , who BOOTS it! He BOOTS it! He freakin BOOTS it! Mickey Doolan with his 58th error of the season! And he calls himself a shortstop 8! (With another game left, he's got a shot at an infamous 60!)

-So now, with another life, up comes Tommy Leach; the Spiders best hitter. Argghhh. With that 'M' after my pitchers name, we can afford a 2 run dinger here, so we go to the Bullpen, and bring in Al Carson, only an 8*, but he's got an H for a homerun letter. Hopefully that keeps the ball in the park. And a fresh arm can't hurt.

-Ok, here's we go.....the pitch to Tommy Leach....

* T. Leach facing A. Carson, T 9th, 2 Outs, Runner on 1st, Behind 1-3

And the pitch ... Leach swings ... it's hard and long ... sending Evans back
will it be deep enough? ... nope ... Evans's there ... he squeezes it
and that's the last out of the game

FINAL SCORE : Spiders 1, Ainspans 3

Game Four – Well here we are. It's the penultimate game of the regular season for the Vitamen. Word has already spread through town that the Spiders have succeeded in hanging a loss on the Ainspans, leaving the door open for a potential tie-breaker game #155.

But standing in the way are the Long Islanders, who do not wish to be anyone's entry mat. They will send Farmer Ray (6-14) to the mound to oppose HP's Doc Scanlan (12-13). Ray lost two starts against the Vitamen earlier in the season, while HP won all three of Scanlan's starts against LI.

It's win and keep playing for the Vitamen. Here we go:

T2 – Jimmy Mac singles with one out, his 90th hit; but a 4-6-3 ends the inning quickly.

B2 – Lord with a single, the 1st HP hit. Three more singles, the bags are full, and a run has scored. HP 1-0. Two more hits, a double from Hooper, and it's 5-0 Vitamen!

T3 – The Islanders storm back, with three singles to open the inning. Then Daubert triples, and suddenly the lead is cut to two, 5-3. Scanlan finally records an out, but it is now a 1-run game. 5-4 HP.

B4 - Vitamen get one back in the 3rd and load the bases in the 4th; but Jimmy Mac starts 4-6-3 DP to end the threat. Hal Chase doubles home a pair with 2-out in the 6th, ending Farmer Ray's day (30 BF, 1 walk, 1 strikeout, 8 runs.) Fred Miller replaces him. He got out of the 6th okay, but with Scanlan having found his groove, HP just kept putting the ball in play, and the Isles played hockey with it, slapping and kicking the ball all around the rink. Three errors and a bunch of hits later, the score was 11-4 HP. Even Red Braun got to take a swing (for Hal Chase).

Before it was over, HP had emptied the bench. Doc Scanlan had allowed 4 runs in the 3rd inning, but no more after that, tossing SIX NO-HIT, NO-RUN innings! A complete game win!

The Vitamen are just one win away from a tie-breaker with the Ainspans. But still one win away.

-Game 5 Pregame:

The Spiders are down to their 4th Starting pitcher, Rube Manning.

'23 Skidoo and Me' says he's the Great Grandfather of Archie and Peyton, so you know he can throw.

South Starrucca will also dip down into their quiver of starting pitchers and produce Dixie Walker. This isn't the famous Dixie Walker of Brooklyn Dodger fame, this is a Faux Walker from 1910. I can't find any reference to how he got the nickname of 'Dixie', but his real first name is "Ewart". So Dixie, Pixie, and Trixie all rank as more appealing names to go thru life with.

Cleve has scored a total of 4 runs in 4 games. I can figure the R/Game using just my left foot. They are due to break out, plus they don't want to end the season being beaten by a guy named 'Ewart'.

Here we go:

GAME 5:

It's a scoreless game into the 3rd.....then Rip Van Spider finally wakes up!

Cleve strings together 4 hits, a walk, and some stolen bases and comes up with 3 runs! That's what they've scored in the last 3 games!

And since the Spiders believe in the old adage of "Good things happen in 3's", they go out and repeat the process in inning 6 and inning 7.

Their bats finally wake up

-Rube Manning is tossing perfect spirals to the plate for Cleveland, and has only given up 1 run to Starrucca thru 6 innings. He tires a bit in the later innings and the Spans start putting up runs.

But its too little, too late, and Cleveland salvages the last game of the series with a score that sounds like a Dolly Parton movie; "9 To 5!"

The Spidies wish they could reallocate those 9 runs to previous games, the series would have had totally different results.

Starrucca takes the series 4 games to 1, and Hyde Park's fate in the division is in their own hands, and in Long Islands bats.

Game Five – And so the regular season has come to this. One win from finally catching the Ainspans, a season-long effort. Only LI's Ed Kinsella (2-7), making just his 7th start of the season, stands in the way; but Kinsella's one victory this season came against the Vitamen in June. Hyde Park put all their hopes in the capable hands of Fred Olmstead (10-9), who did not start against the Isles this season. Hopefully that will be to his advantage.

And away we go...

T1 – LI gets 2 runners on, but Jimmy Mac chases one out of the zone for strike three!

B1 – Sheckard opens with a single. Two outs later Schulte drives him home! It's HP 1-0.

B3 – Chase doubles, scoring Hooper. HP 2-0.

T4 – Moriarty opens with a single, and Jimmy Mac doubles over 3rd. Quickly, the tying runs are on board. Chouinard strikes out, but the ball eludes Erwin. A run scores and everybody is safe! HP 2-1. Hauser walks to load the bases with none out! We need a DP really badly. Catcher Killefer is up, but he runs well for a catcher and has only hit into two DP's all season. Olmstead delivers...

A bouncer back to the pitcher! Home for one... to 1st for two! Doubleplay!!! And no run scores! Yet. Two out now. Runners on 2nd and 3rd. 2-1 HP. The pitcher, Kinsella, is up. A good hitter, he's already singled in this game. The pitch...

He walks!!! Brings up one of the Isles big bats, Jake Daubert, with the bags full. Olmstead delivers... and he rolls out to the pitcher!

After all that, the Isles score one run, on a passed ball. HP still in front, 2-1.

T5 – Here they come again. Browne walks to open the 5th. Zack Wheat follows, but Olmstead has had enough. He goes up and in a drills Wheat on the elbow, knocking the biggest LI bat out of the game. But that still leaves 2 runners on and none out. Moriarty bunts the runners over, bringing up the slugging Jimmy Mac. The delivery... Called strike three! Mac can't believe it, but it's true! What's also true is that Chouinard followed with a triple, giving the Islanders a 3-2 lead!!

B5 – After two were out, Sheckard singles to right, steals second, and scores on Hooper's single. Tied up 3-3.

B6 – HP uses 3 singles to score the go-ahead run. They load the bases, but a DP doses the fire. HP 4-3.

T8 – After two are out, Olmstead walks two batters, bringing Kinsella to the plate again. He's a singles hitter; but he IS a hitter. HP elects to pitch to Kinsella, but LI calls on Jack Bliss to hit for the pitcher. Olmstead fires and Bliss flies out to center field.

B8 - The top of the LI order will lead off the 9th, so HP desperately needs to add some insurance runs. On to pitch for LI in the 8th is Jiggs Parson (2-1, 2 saves).

Hal Chase leads off with a double to right center, moving to 3rd on Schulte's grounder. The LI infield moves in for the lefthanded Harry Lord, who grounds to first. The runner has to hold! Now two outs and Wallace is up. Infield moves back... grounder to short. No score.

So we go to the top of the 9th. HP holds a one run lead, 3 outs away from a tie-breaker. With two fresh lefties ready in the pen, HP elects to let the righty-tossing Olmstead face the lefty slugging Daubert. He has 7 home runs this season. The entire HP populace holds their collective breath...

It's a high fly ball to deep right center... Sheckard's racing to the track... so's Hooper... so am I... no chance to get there for me... but Sheckard does and brings it down!

Oh, my! One away. BP rapidly rising... and that's it for Olmstead. He'll make way for lefty Slim Sallee (5-7, one save) to face the lefty-swinging Browne and Strunk.

And Browne singles to right! And Strunk singles! The tying run is now at 3rd. Moriarty grounds to 2nd for the 2nd out, but the tying run scores. 4-4. And Jimmy Mac is up with the potential go-ahead run on 2nd. No, we are not going to pitch to him. We'll take our chances with Chouinard, who has already hit a triple in this game. He pops to short, and we go to the bottom of the 9th, tied 4-4.


B9 – Shean flies out for the 1st out. Catcher Billy Sullivan is next. He pops it straight up, but Killefer lets the ball hit off his mitt, allowing Sully to reach base safely. Pitcher Slim Sallee bats for himself and lays down a bunt to the right of the mound. Parson picks it up and goes to Jimmy Mac covering 1st. But Mac drops the ball trying to find the bag! E-6 on Mac, and the potential winning run is on 2nd. Sheckard at the plate. And he walks!!!! The bases are loaded with just one out. Next up is Harry Hooper. He has hit into 11 DPs this season, but LI elects to pull the infield in. Newnam comes in to run for Sullivan at 3rd... Parson sets. The delivery...

IT'S BALL FOUR! HE WALKED HIM!

IT'S OVER!! VITAMEN WIN!!!

ALL TIED UP

TIEBREAKER



The South Starrucca Ainspans and the Hyde Park Vitamen will meet in a one-game tie-breaker to determine the winner of the TCBA Origins 1911 Mahley Division. That game will be played tonight and be broadcast live on ZOOM-TV.

First Pitch is scheduled for 7pm EDT. The gates are opened now, and there are still some seats available. It's a beautiful night for baseball, so join us!

Get your tickets here: [Game #155 Tickets - Will Call](#)

The contract with the players Union has been settled, they have agreed to play an extra game, for which they were handsomely compensated.

What they didn't agree to was to make it exciting.

I can sum up this game with:

“Starrucca gets a walk from their pitcher, followed by a walk from their leadoff hitter, followed by a run scoring single from the 2nd place hitter.”

That's it.

That's all she wrote.

Both starting pitchers, the Aces of their staffs, were as good as they could have been. Only 1 run scored tonite, and I don't recall much of any other rally that would give either of us 'baseball fever'.

This was more like a diabetic coma.

There was less action then on my honeymoon. (well, that's not completely true, the hotel tv DID carry Cinemax After Dark.)

Starrucca finishes the game with a 1-0 decision to break the Division tie and win the Mahley Division.

Congratulations to Hyde Park for mounting a consistent charge the last ¼ or so of the season, when they found themselves down by about 6 games and they started chewing away at the lead, a game at a time, series by series. Then beating Starrucca 3/2 in their final head to head series.

Coming into this Tie Breaker, they had beaten Starrucca 10 out of 18 games, with most of them being close. This one couldn't have been any closer, but it was like a hockey game where the players can only wear one skate. Just very little action for a Championship game.

Around the 7th inning or so, one of the Zoom spectators had their video go black, and then next thing we saw was on their screen:



But, its also the situation where after 154 games, both teams deserved to win, but only one of them can. We got lucky, again, that the Hyde Park offense just took the nite off, cuz there ain't too many other ways to win a game when you only score 1 run.

Team	1	2	3	4	5	6	7	8	9	R	H	E	LOB
South Starrucca Ainspans	0	0	0	0	0	0	0	1	0	1	3	1	5
Hyde Park Vitamen	0	0	0	0	0	0	0	0	0	0	2	0	2

I believe Starrucca and Hyde Park will both be fighting for the Division again next season, they both look like they will have very equally matched teams. I wish the Vitamen the best, and lets do it again next year!

Marty

FINISH LINE®

	W	L	PCT	GB	Mg #	STRK	Last 10	Home	Away	1 Run	X-Inn
TCBA Origins 1910 MLB											
Don Mahley Division											
South Starrucca Ainspans	91	64	.587	-	X	W 1	7- 3	47-30	44-34	17-28	4- 4
Hyde Park Vitamen	90	65	.581	1.0	-	L 1	7- 3	44-34	46-31	21-16	6- 8
Cleveland Spiders	79	75	.513	11.5	-	W 1	3- 7	42-35	37-40	22-25	8-12
Long Island Islanders	44	110	.286	46.5	-	L 5	3- 7	24-53	20-57	17-28	5-12
Stu McCorkindale Division											
Bradenton Buckeyes	89	65	.578	-	X	W 2	7- 3	46-31	43-34	25-22	8- 6
Mexicali Mallards	85	69	.552	4.0	-	L 1	5- 5	43-34	42-35	26-15	9- 4
Cleveland Naps	75	79	.487	14.0	-	W 1	5- 5	41-36	34-43	23-18	7- 7
Bergen Barflies	40	114	.260	49.0	-	L 2	3- 7	18-59	22-55	9-23	2-10
Bill Kirwin Division											
Grand Rapids Wolverines	91	63	.591	-	X	W 1	5- 5	50-27	41-36	26-18	8- 5
Pittsburgh Rebels	89	65	.578	2.0	-	L 1	6- 4	45-32	44-33	22-16	8- 4
Waukesha Freeman	89	65	.578	2.0	-	L 1	8- 2	46-31	43-34	24-21	13- 5
Mimosa Mirthmakers	48	106	.312	43.0	-	W 1	1- 9	22-55	26-51	9-23	1- 6
Richard Seitz Division											
Turin Mountaineers	102	52	.662	-	X	L 1	5- 5	57-20	45-32	27-22	14- 8
Buffalo Mules	91	63	.591	11.0	-	W 1	5- 5	47-30	44-33	28-19	10- 9
London Tecumsehs	70	84	.455	32.0	-	L 1	6- 4	38-39	32-45	25-28	7- 8
Hereford Highlanders	60	94	.390	42.0	-	W 1	4- 6	31-46	29-48	30-29	7- 9

FINAL STANDINGS – 1911 TCBA ORIGINS

16 Teams	AVG	OBP	SLG	G	AB	H	2B	3B	HR	R	R/G	SO	BB	LOB	SB	CS	SBP
Pittsburgh Rebels	.260	.321	.347	154	5295	1379	220	96	15	727	4.7	542	460	1108	244	82	74.8
Bradenton Buckeyes	.259	.333	.329	154	5211	1350	211	46	20	707	4.6	587	533	1172	176	78	69.3
Grand Rapids Wolverines	.254	.327	.329	154	5228	1328	192	63	25	720	4.7	584	552	1199	151	46	76.6
Waukesha Freeman	.254	.322	.336	154	5241	1331	218	77	20	687	4.5	516	503	1112	153	80	65.7
Hyde Park Vitamen	.253	.314	.328	155	5347	1355	211	69	17	714	4.6	562	445	1123	221	84	72.5
South Starrucca Ainspans	.253	.325	.335	155	5280	1335	209	79	22	757	4.9	594	504	1200	152	57	72.7
Turin Mountaineers	.248	.317	.331	154	5251	1301	215	81	20	728	4.7	612	526	1133	241	84	74.2
Buffalo Mules	.244	.324	.317	154	5258	1282	228	54	17	726	4.7	673	588	1186	158	58	73.1
Cleveland Naps	.243	.319	.325	154	5261	1277	179	81	30	663	4.3	654	551	1190	226	65	77.7
Mexicali Mallards	.237	.306	.302	154	5218	1239	195	56	10	661	4.3	674	460	1095	215	64	77.1
London Tecumsehs	.237	.297	.297	154	5280	1252	175	54	11	585	3.8	695	427	1125	155	65	70.5
Hereford Highlanders	.234	.301	.302	154	5203	1218	160	73	15	545	3.5	570	486	1118	162	60	73.0
Bergen Barflies	.229	.293	.307	154	5238	1202	196	84	14	558	3.6	681	424	1135	76	34	69.1
Mimosa Mirthmakers	.225	.285	.281	154	5123	1153	153	43	16	537	3.5	586	415	1033	165	64	72.1
Long Island Islanders	.221	.302	.298	154	5214	1152	192	70	24	602	3.9	755	553	1166	130	47	73.4
Cleveland Spiders	.220	.289	.285	154	5182	1138	208	35	21	589	3.8	682	454	1101	104	48	68.4
TCBA Origins 1910 MLB	.242	.311	.316	1233	83830	20292	3162	1061	297	10506	8.5	9967	7881	18196	2729	1016	72.9

Pittsburgh led the league in average, slugging, hits, triples and stolen bases. South Starrucca led in scoring but also in LOB. Buffalo led in walks and doubles. Cleveland Naps led in home runs. Bradenton led in OnB%. Waukesha had the fewest struck out and Bergen the fewest thrown out stealing. Mexicali's SB% led the league.

16 Teams	ERA	G	CG	SHO	QS	SV	IP	H	R	ER	HR	SO	BB	HB	WP	BK	OBA
Turin Mountaineers	2.32	154	72	18	98	12	1405.2	1094	488	362	14	728	436	54	19	2	.212
Bradenton Buckeyes	2.48	154	61	16	104	25	1377.1	1091	515	380	10	696	421	46	16	3	.214
Cleveland Spiders	2.49	154	80	17	93	9	1406.1	1074	520	389	14	630	505	48	24	3	.210
Buffalo Mules	2.69	154	72	16	83	19	1397.0	1204	590	418	17	737	473	42	25	3	.229
South Starrucca Ainspans	2.72	155	42	14	93	27	1376.1	1167	544	416	21	614	417	67	15	1	.226
Grand Rapids Wolverines	2.78	154	81	17	80	11	1379.2	1267	572	426	13	516	428	46	35	0	.243
Waukesha Freeman	2.91	154	79	13	91	13	1387.2	1215	569	448	26	421	469	52	19	2	.235
Mexicali Mallards	2.92	154	64	10	88	19	1379.2	1241	611	447	20	630	446	60	22	2	.237
London Tecumsehs	2.97	154	64	12	85	11	1387.2	1240	626	458	15	569	468	50	15	1	.238
Pittsburgh Rebels	3.03	154	82	17	82	11	1389.1	1206	613	468	21	625	504	49	24	0	.234
Hyde Park Vitamen	3.07	155	63	17	88	15	1386.1	1127	589	473	23	617	557	58	26	0	.222
Hereford Highlanders	3.09	154	85	4	75	6	1376.1	1152	686	473	16	733	511	61	18	0	.224
Cleveland Naps	3.25	154	87	12	75	10	1383.1	1342	668	500	18	680	441	61	29	2	.252
Mimosa Mirthmakers	4.65	154	44	10	57	12	1349.2	1537	875	697	16	497	611	66	22	2	.286
Long Island Islanders	4.69	154	42	4	44	11	1369.2	1638	1033	714	24	691	591	74	26	0	.292
Bergen Barflies	5.00	154	37	7	52	8	1349.1	1697	1007	749	29	583	603	42	15	2	.305
TCBA Origins 1910 MLB	3.18	1233	1055	204	1288	219	22101.1	20292	10506	7818	297	9967	7881	876	350	23	.242

Turin led the league in ERA and shutouts. Buffalo had the most strikeouts and tied Bergen with the least Hit Batters. The Cleveland Spiders pitched the most innings, allowed the fewest hits and lowest OBA. South Starrucca issued the fewest walks and had the most saves. The Cleveland Naps had the most complete games. Bradenton had the most Quality Starts and allowed the fewest home runs. Bergen and London tied with the fewest wild pitches.

16 Teams	FLD	G	PO	A	E	DP	TP	PB	OSB	OCS	OSBP	OSBA	DER	UER	UERP
Hyde Park Vitamen	.974	155	4159	1998	167	108	0	27	114	42	73.1	.740	.733	116	19.7
Grand Rapids Wolverines	.971	154	4139	1993	184	96	0	19	201	81	71.3	1.311	.711	146	25.5
Waukesha Freeman	.970	154	4163	2100	196	128	0	13	145	55	72.5	.940	.726	121	21.3
Pittsburgh Rebels	.969	154	4168	1930	195	137	0	19	175	64	73.2	1.134	.715	145	23.7
Bradenton Buckeyes	.966	154	4132	1763	205	93	0	11	126	45	73.7	.823	.727	135	26.2
Cleveland Spiders	.966	154	4219	1860	212	89	0	19	171	72	70.4	1.094	.737	131	25.2
Mimosa Mirthmakers	.964	154	4049	2030	225	128	0	16	165	59	73.7	1.100	.664	178	20.3
Turin Mountaineers	.964	154	4217	1844	225	94	0	19	121	66	64.7	.775	.727	126	25.8
London Tecumsehs	.964	154	4163	2015	230	100	0	21	138	81	63.0	.895	.709	168	26.8
Cleveland Naps	.964	154	4150	1859	226	106	0	20	164	58	73.9	1.067	.687	168	25.1
Buffalo Mules	.962	154	4191	1839	235	106	0	23	211	73	74.3	1.359	.706	172	29.2
South Starrucca Ainspans	.962	155	4129	1802	236	100	0	19	133	62	68.2	.870	.716	128	23.5
Mexicali Mallards	.959	154	4139	1879	257	105	0	19	152	55	73.4	.992	.704	164	26.8
Bergen Barflies	.958	154	4048	1938	265	113	0	36	252	53	82.6	1.681	.635	258	25.6
Hereford Highlanders	.954	154	4129	1721	285	90	0	20	238	74	76.3	1.556	.706	213	31.0
Long Island Islanders	.950	154	4109	1912	320	119	0	32	223	76	74.6	1.465	.634	319	30.9
TCBA Origins 1910 MLB	.964	1233	66304	30483	3663	1712	0	333	2729	1016	72.9	1.111	.701	2688	25.6

Hyde Park led in fielding, allowed the fewest unearned runs, and the fewest stolen bases with the lowest success rate for base stealers. Pittsburgh had the most double plays. Bradenton had the fewest passed balls. Waukesha had the most assists (2000) while the Cleveland Spiders had the most put outs. London and Grand Rapids each threw out a league high 81 base stealers. We had no triple plays.

	SO	HP	CS	LI	BR	ME	CL	BE	GW	PR	WA	MI	TU	BU	LT	HH
TCBA Origins 1910 MLB																
Don Mahley Division																
South Starrucca Ainspans		8-11	12-6	15-3	6-3	7-2	5-4	7-2	4-4	3-5	6-2	6-2	1-7	3-5	6-2	2-6
Hyde Park Vitamen	11-8		14-4	16-2	3-6	3-6	4-5	4-5	3-5	2-6	5-3	7-1	3-5	5-3	4-4	6-2
Cleveland Spiders	6-12	4-14		11-7	6-3	2-7	6-3	9-0	4-4	5-3	2-6	7-1	4-4	2-6	6-2	5-3
Long Island Islanders	3-15	2-16	7-11		2-7	2-7	4-5	4-5	0-8	5-3	1-7	4-4	1-7	2-6	4-4	3-5
Stu McCorkindale Division																
Bradenton Buckeyes	3-6	6-3	3-6	7-2		9-9	11-7	15-3	5-3	5-3	2-6	7-1	1-7	5-3	4-4	6-2
Mexicali Mallards	2-7	6-3	7-2	7-2	9-9		10-8	12-6	2-6	4-4	4-4	6-2	3-5	2-6	4-4	7-1
Cleveland Naps	4-5	5-4	3-6	5-4	7-11	8-10		14-4	4-4	4-4	4-4	3-5	3-5	3-5	5-3	3-5
Bergen Barflies	2-7	5-4	0-9	5-4	3-15	6-12	4-14		2-6	2-6	2-6	3-5	1-7	1-7	3-5	1-7
Bill Kirwin Division																
Grand Rapids Wolverines	4-4	5-3	4-4	8-0	3-5	6-2	4-4	6-2		8-10	9-9	16-2	3-6	3-6	4-5	8-1
Pittsburgh Rebels	5-3	6-2	3-5	3-5	3-5	4-4	4-4	6-2	10-8		11-7	14-4	3-6	4-5	6-3	7-2
Waukesha Freeman	2-6	3-5	6-2	7-1	6-2	4-4	4-4	6-2	9-9	7-11		14-4	6-3	3-6	7-2	5-4
Mimosa Mirthmakers	2-6	1-7	1-7	4-4	1-7	2-6	5-3	5-3	2-16	4-14	4-14		3-6	3-6	4-5	7-2
Richard Seitz Division																
Turin Mountaineers	7-1	5-3	4-4	7-1	7-1	5-3	5-3	7-1	6-3	6-3	3-6	6-3		11-7	9-9	14-4
Buffalo Mules	5-3	3-5	6-2	6-2	3-5	6-2	5-3	7-1	6-3	5-4	6-3	6-3	7-11		9-9	11-7
London Tecumsehs	2-6	4-4	2-6	4-4	4-4	4-4	3-5	5-3	5-4	3-6	2-7	5-4	9-9	9-9		9-9
Hereford Highlanders	6-2	2-6	3-5	5-3	2-6	1-7	5-3	7-1	1-8	2-7	4-5	2-7	4-14	7-11	9-9	

We had two sweeps this year. The Cleveland Spiders swept nine games against Bergen while Grand Rapids swept eight games against Long Island. Grand Rapids going 16-2 against Mimosa was our other outlier this season.



Batting																		
	AVG	OBP	SLG	G	AB	H	2B	3B	HR	R	R/G	SO	BB	LOB	SB	CS	SBP	RRpW
TCBA Origins 1910 MLB	.242	.311	.316	1233	83830	20292	3162	1061	297	10506	8.5	9967	7881	18196	2729	1016	72.9	9.75
Pitching																		
	ERA	G	CG	SHO	QS	SV	IP	H	R	ER	HR	SO	BB	HB	WP	BK	OBA	
TCBA Origins 1910 MLB	3.18	1233	1055	204	1288	219	22101.1	20292	10506	7818	297	9967	7881	876	350	23	.242	
Fielding																		
	FLD	G	PO	A	E	DP	TP	PB	OSB	OCS	OSBP	OSBA	DER	UER	UERP			
TCBA Origins 1910 MLB	.964	1233	66304	30483	3663	1712	0	333	2729	1016	72.9	1.111	.701	2688	25.6			

1910 MLB COMPARISONS

.249/.318/.326

7.66 rpg

2.77 ERA

.958 Fielding

highlights

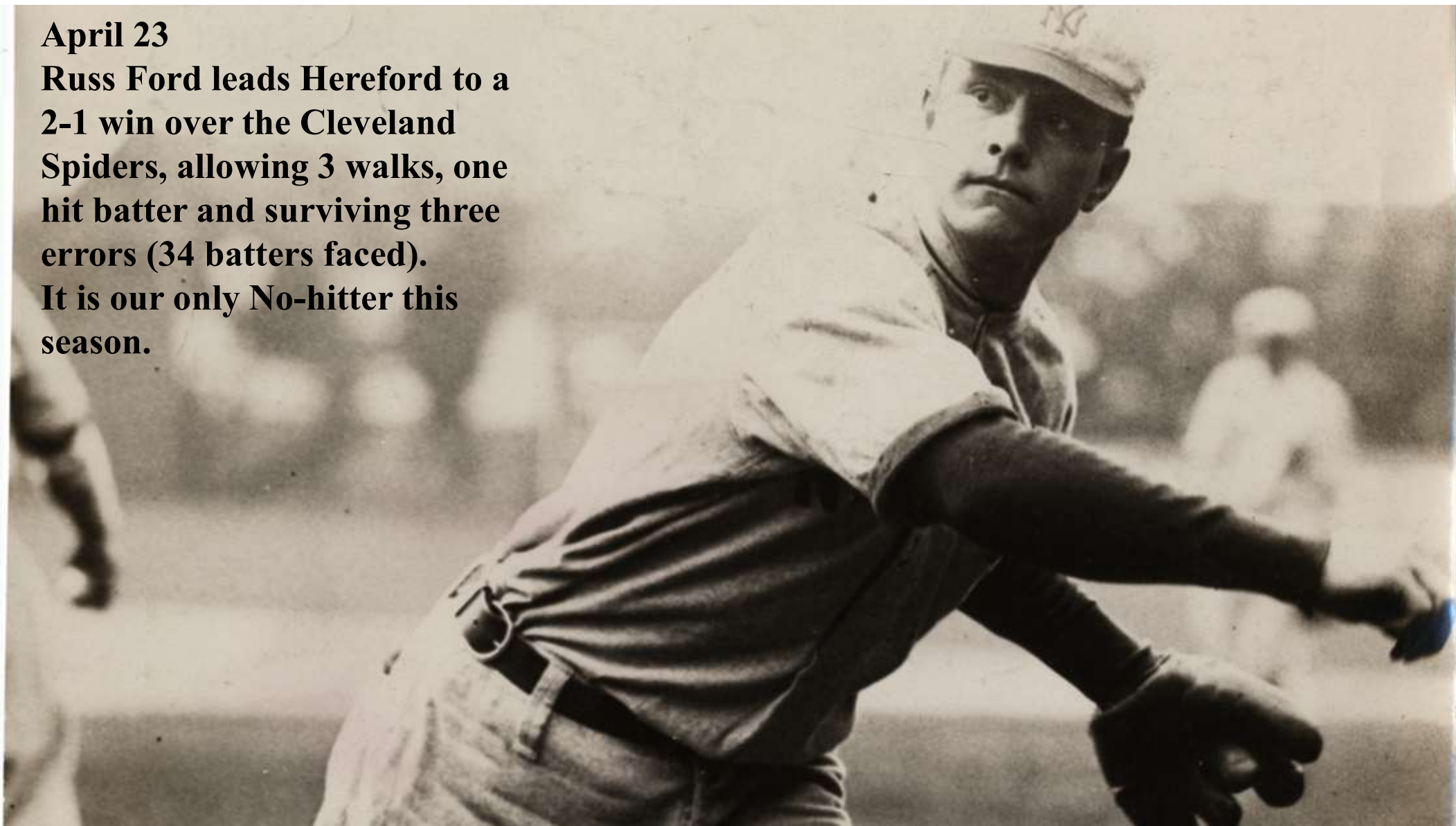


**NO
HIT
ZONE**

April 23

Russ Ford leads Hereford to a 2-1 win over the Cleveland Spiders, allowing 3 walks, one hit batter and surviving three errors (34 batters faced).

It is our only No-hitter this season.



A vinyl record is shown from a top-down perspective, partially covered by a bright blue sleeve. The record's surface is black with a visible grooved texture. The text "ONE-HIT WONDERS" is printed in a large, bold, yellow font with a red and blue outline, centered on the record. The sleeve's edge is visible at the bottom and sides, framing the record.

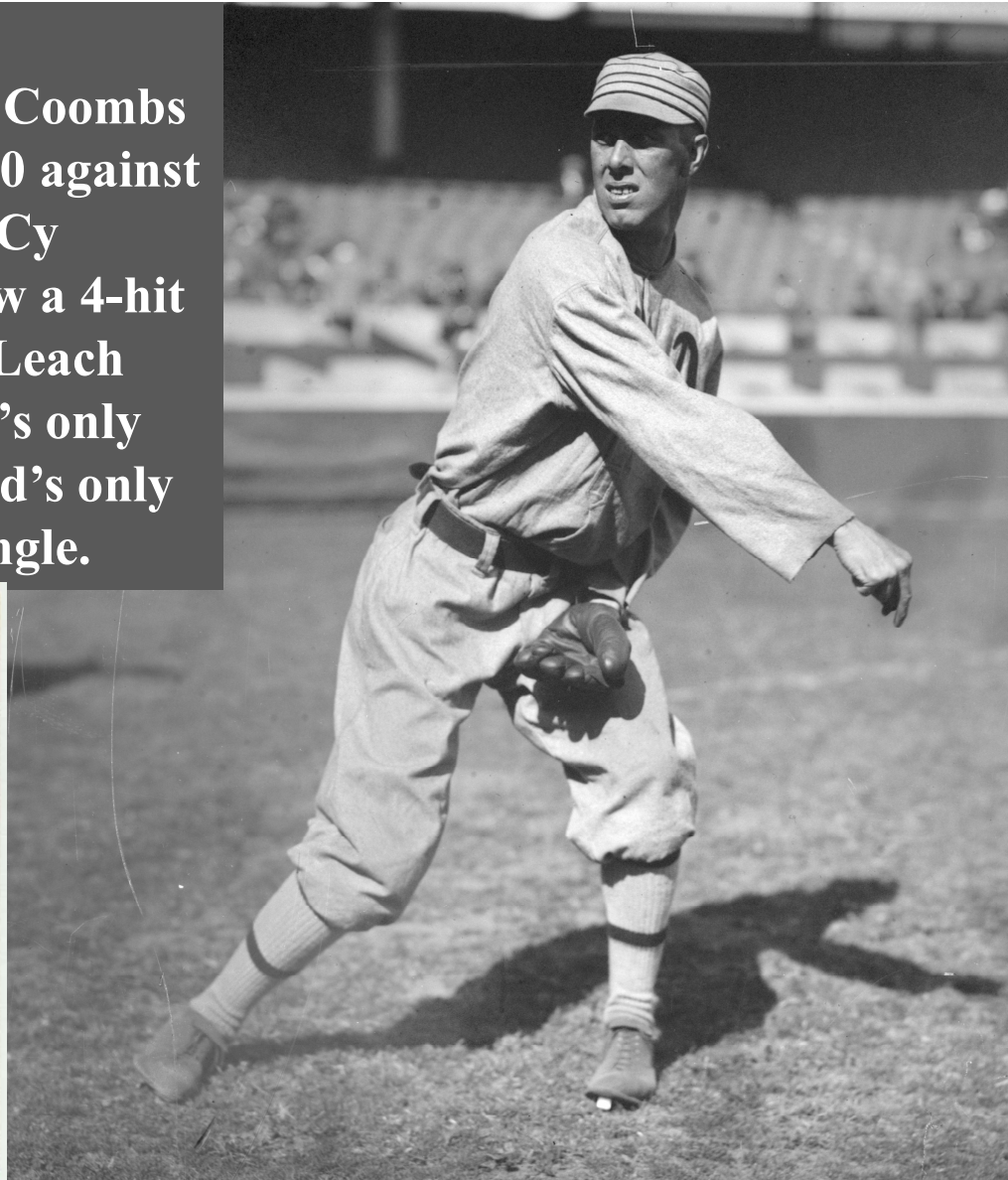
**ONE-HIT
WONDERS**

We had 26 one-hit complete games thrown this season, in addition to the one no-hitter. We also had four other combined 1-hitters. With one exception, all were thrown in winning efforts.

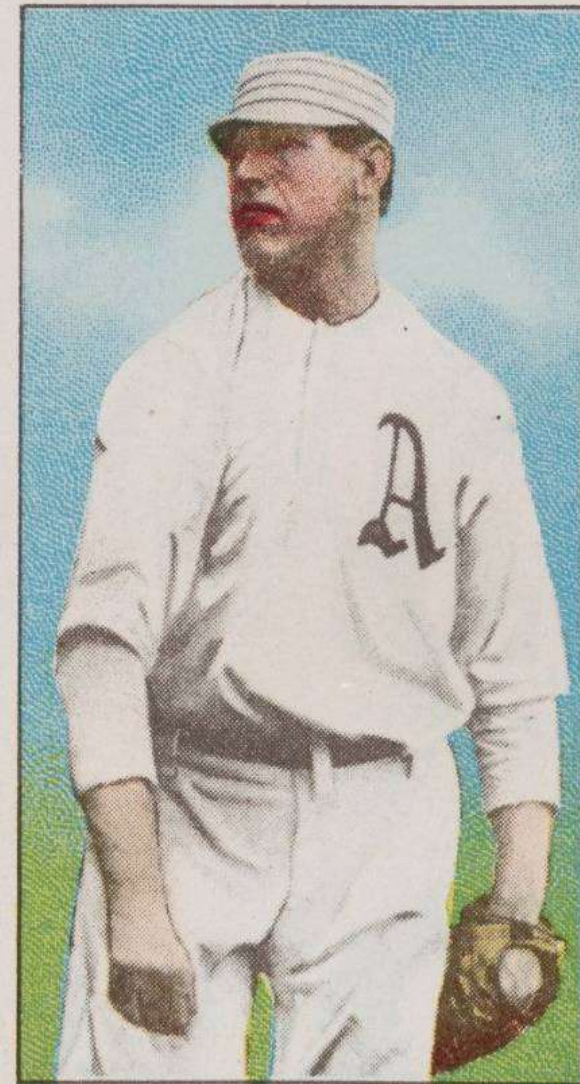
So Close



April 14
Bradenton's Jack Coombs
lost his 1-hitter, 1-0 against
Cleveland Spider Cy
Morgan who threw a 4-hit
shutout. Tommy Leach
drove in the game's only
run with Cleveland's only
hit, a 6th inning single.



LEACH PITTSBURG



MORGAN, ATHLETICS AMER.

April 14
Long Island's Bill Sweeney led off the game with a home run, and later drew a walk, but that was ALL that Dolly Gray allowed today, pitching 13 innings of no-hit ball after that, and surviving 4 Nap errors behind him to win, 2-1 for Cleveland. This was the only Nap 1-hitter of the season and earned Dolly a game score of 105.



GRAY, WASHINGTON

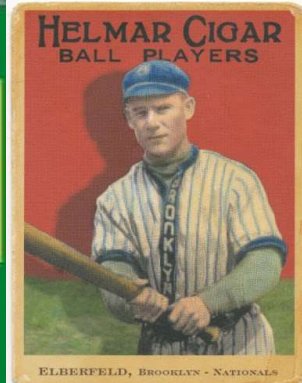


SWEENEY, BOSTON NAT'L



**April 16 - Ed Walsh
threw a 1-hitter for the
Cleveland Spiders,
winning 6-1 in
Bradenton. A single
by Kid Elberfeld, 3 walks and 4 errors did produce one run.**

"BIG" ED WALSH





April 17

King Cole pitched 8 shutout innings, allowing only a Rube Oldring single. Rube Benton pitched the 9th to complete the 7-0 1-hit Hyde Park victory over Cleveland Naps



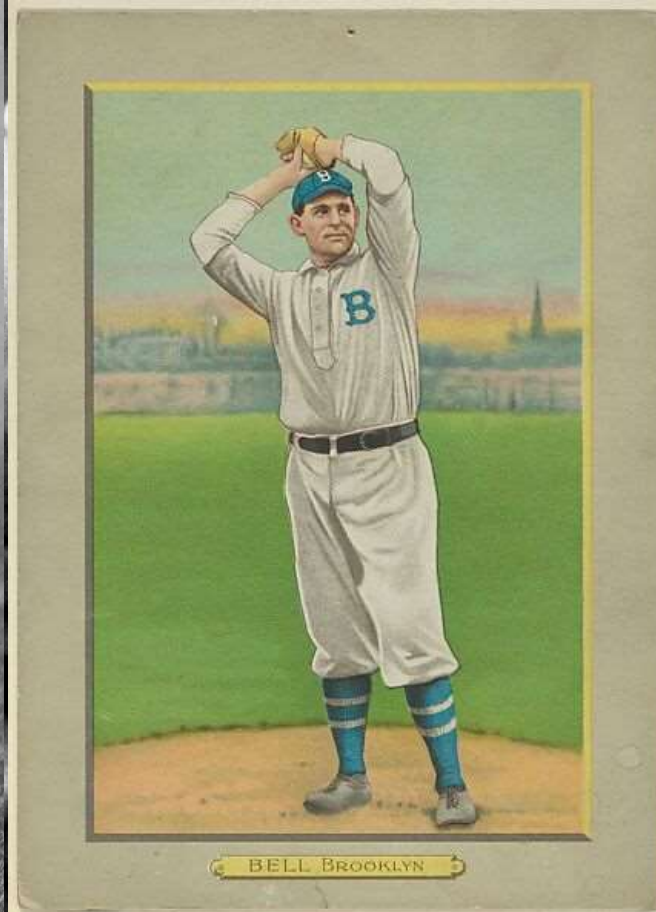
SUPPLEMENT TO
The Sporting News
ST. LOUIS, NOVEMBER 26, 1909



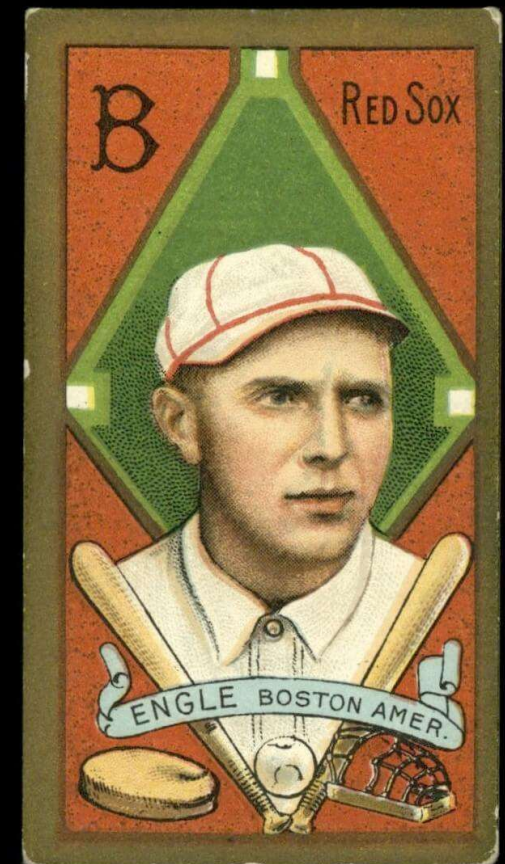
GEORGE BELL
BROOKLYN NATIONAL LEAGUE

April 18

George Bell walked 3 but only allowed a Clyde Engle single as Grand Rapids defeated Hereford, 2-0 despite 2 errors.

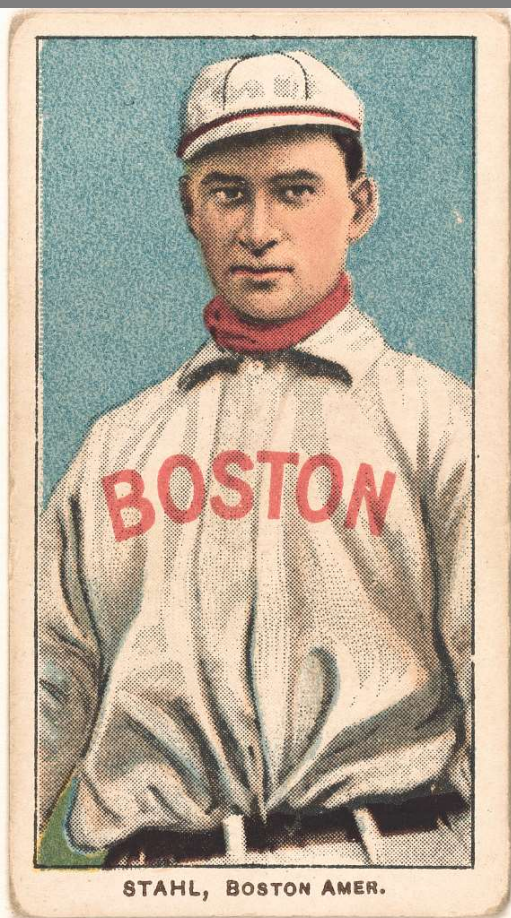


BELL BROOKLYN



April 22

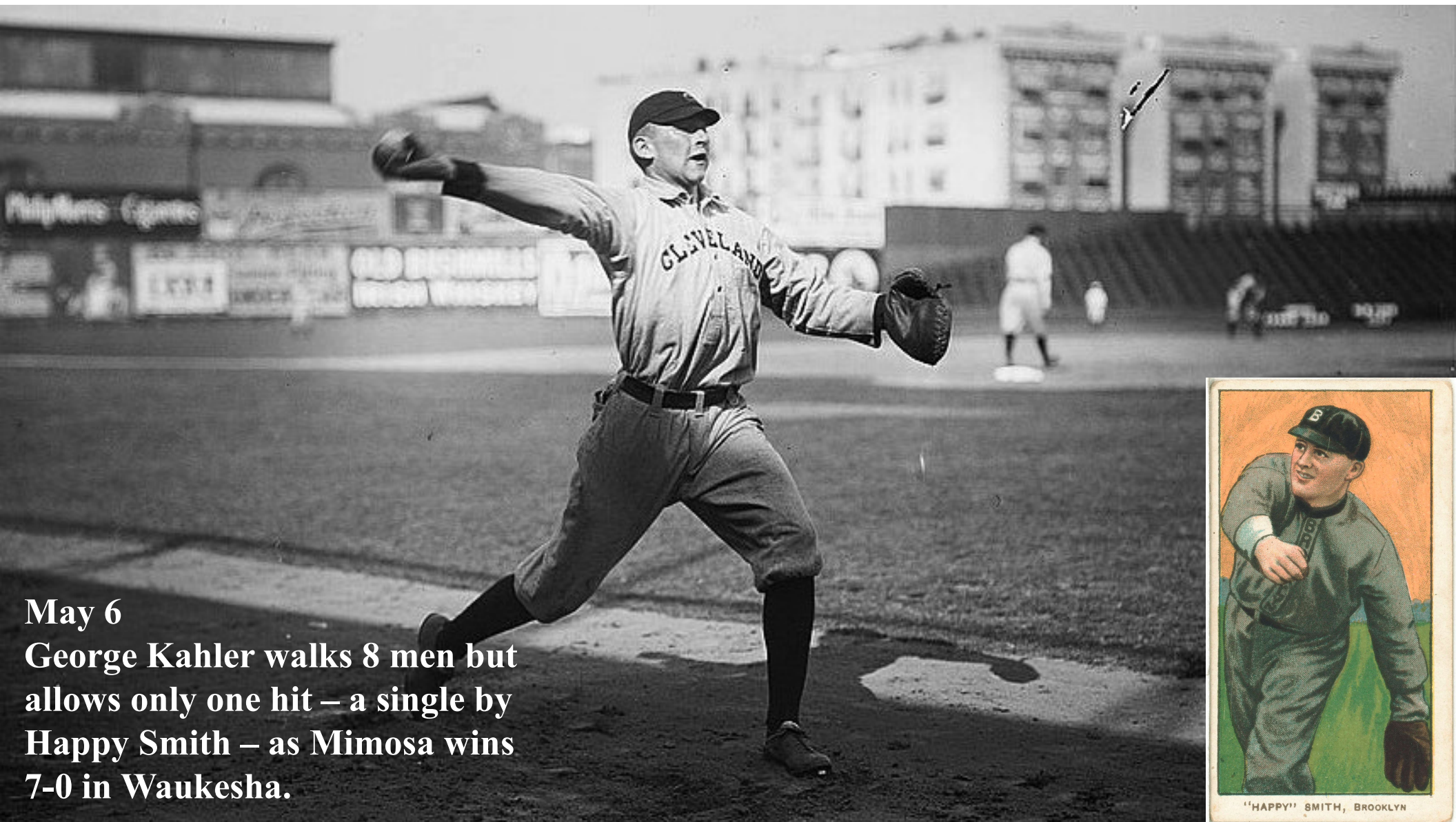
Russ Ford walked 6 but allowed only a Jake Stahl single to 1-hit Hereford, 2-0 for Grand Rapids



May 1

Louis Drucke threw 4 innings of no-hit ball, followed by Bob Harmon, who did the same for South Starrucca, who thumped Long Island, 15-2. Jim Moroney took the mound, giving up an RBI single to Zach Wheat while retiring one hitter. Doc Crandall got the final 2 outs to complete the combined 1-hitter.



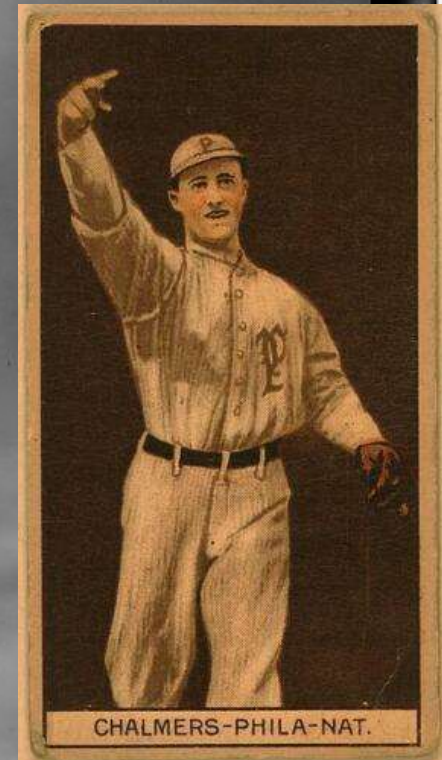
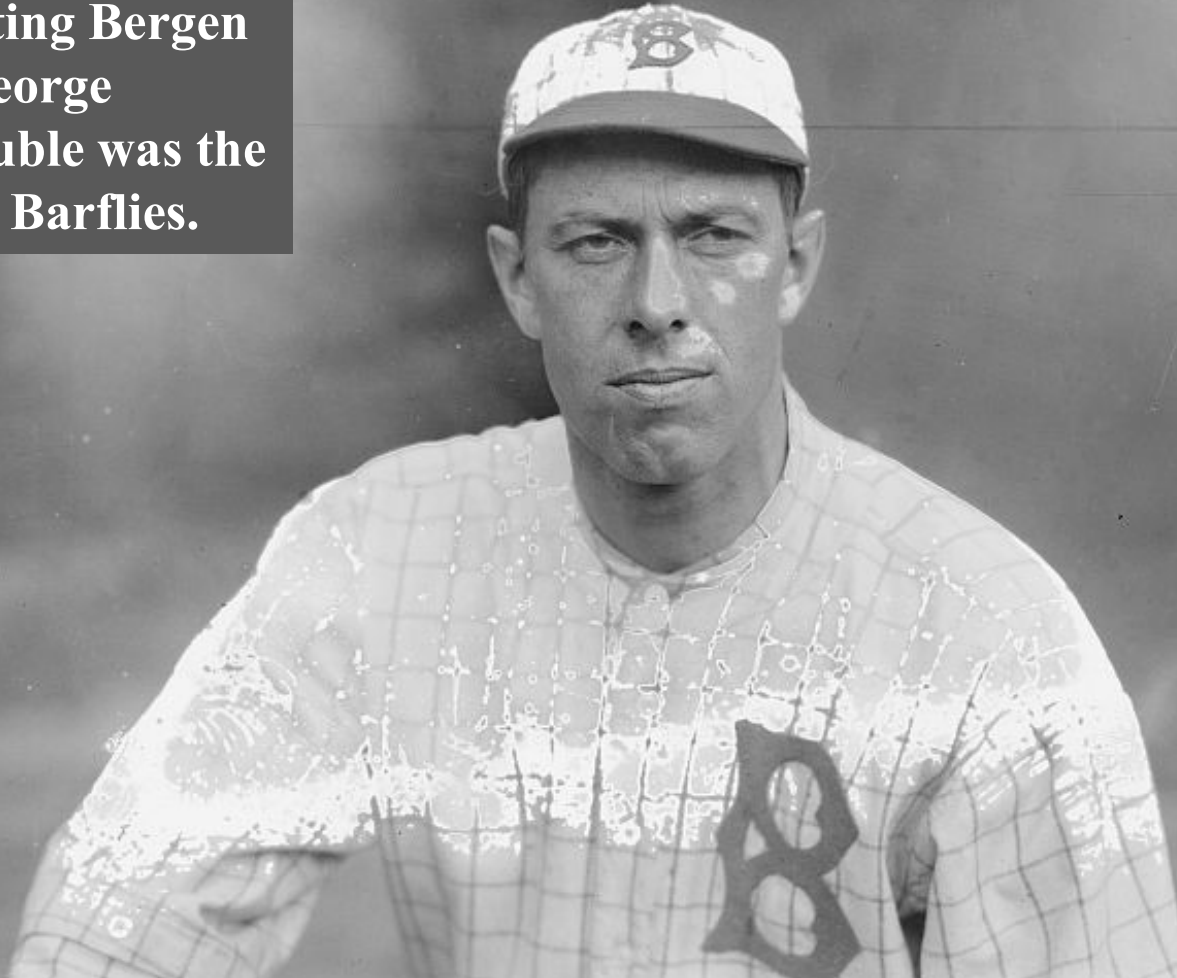


May 6
George Kahler walks 8 men but
allows only one hit – a single by
Happy Smith – as Mimosa wins
7-0 in Waukesha.

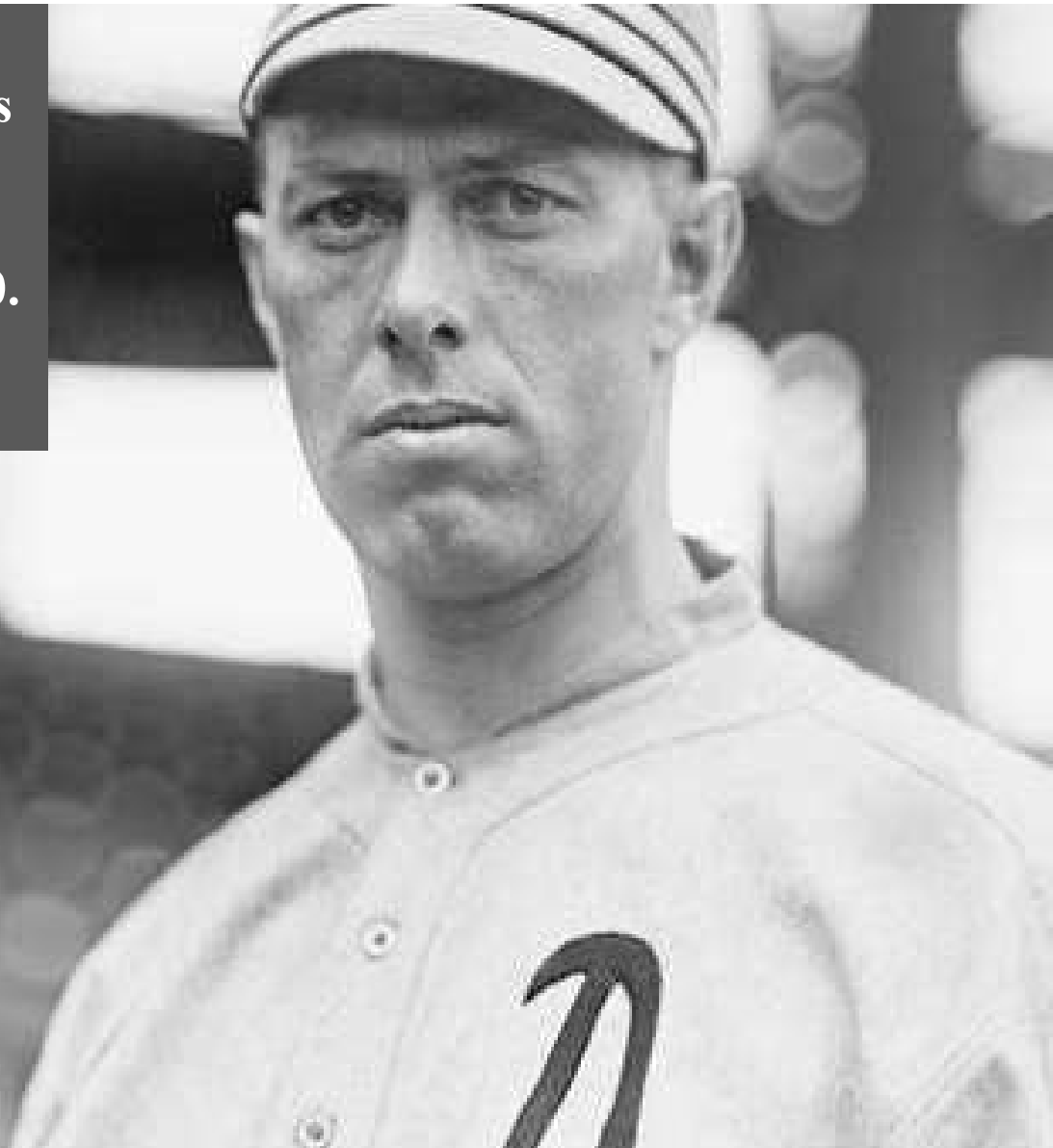


May 12

Bradenton's Jack Coombs
threw his 2nd one-hitter of
the year, defeating Bergen
4-1. Pitcher George
Chalmers's double was the
only hit for the Barflies.



May 16
Bradenton's Jack Coombs
made it back-to-back 1-
hitters, defeating the
Tecumsehs in London, 1-0.
Eddie Grant's single was
the lone safety.



May 26
Russ Ford threw his 2nd (of 3)
one-hitters, as Hereford defeated
Bergen 2-1. A 1st inning RBI
double by Duffy Lewis was the
only hit.

