





The 10 players with the highest Batting Average

Name	Tm	Lg	AVG	PA
DONLIN, M.	BU	TCBA	.357	659
BRANSFIELD, K.	CS	TCBA	.345	603
WAGNER, H.	WA	TCBA	.342	693
COBB, T.	BU	TCBA	.327	607
CRAWFORD, S.	GW	TCBA	.317	686
McINTYRE, M.	CS	TCBA	.308	683
TITUS, J.	CS	TCBA	.297	587
HEMPHILL, C.	CL	TCBA	.290	609
BRESNAHAN, R.	GW	TCBA	.287	600
CLARKE, F.	MI	TCBA	.281	659

The 10 players with the highest Slugging Average

Name	Tm	Lg	SLG	PA
COBB, T.	BU	TCBA	.492	607
WAGNER, H.	WA	TCBA	.480	693
DONLIN, M.	BU	TCBA	.471	659
CRAWFORD, S.	GW	TCBA	.448	686
BRANSFIELD, K.	CS	TCBA	.446	603
TINKER, J.	PR	TCBA	.410	637
McINTYRE, M.	CS	TCBA	.400	683
MAGEE, S.	BU	TCBA	.399	601
MURRAY, R.	TU	TCBA	.379	637
TITUS, J.	CS	TCBA	.375	587

The 10 players with the highest On Base Percentage

Name	Tm	Lg	OBP	PA
WAGNER, H.	WA	TCBA	.412	693
McINTYRE, M.	CS	TCBA	.409	683
DONLIN, M.	BU	TCBA	.405	659
TITUS, J.	CS	TCBA	.396	587
BRANSFIELD, K.	CS	TCBA	.389	603
BRESNAHAN, R.	GW	TCBA	.384	600
COBB, T.	BU	TCBA	.374	607
DEVLIN, A.	GW	TCBA	.370	683
HEMPHILL, C.	CL	TCBA	.369	609
McCONNELL, A.	BU	TCBA	.368	586

The 10 players with the most Runs Created

Name	Tm	Lg	RC	PA
WAGNER, H.	WA	TCBA	127.0	693
DONLIN, M.	BU	TCBA	114.7	659
COBB, T.	BU	TCBA	95.8	607
McINTYRE, M.	CS	TCBA	95.7	683
CRAWFORD, S.	GW	TCBA	95.1	686
BRANSFIELD, K.	CS	TCBA	88.1	603
DEVLIN, A.	GW	TCBA	77.0	683
BRESNAHAN, R.	GW	TCBA	75.2	600
TITUS, J.	CS	TCBA	74.6	587
STONE, G.	BE	TCBA	73.2	663

The 10 players with the longest Hitting Streak Current

Name	Tm	Lg	G	PA
BRIDWELL, A.	CL	TCBA	9	579
WAGNER, H.	WA	TCBA	9	693
GEHRING, H.	HP	TCBA	7	34
BURCH, A.	WA	TCBA	7	320
WILSON, C.	SO	TCBA	7	349
HUMMEL, J.	TU	TCBA	7	567
BARRY, J.	ME	TCBA	6	511
PATTEE, H.	HP	TCBA	6	526
BRANSFIELD, K.	CS	TCBA	6	603
HEMPHILL, C.	CL	TCBA	6	609

The 11 players with the longest Hitting Streak Season

Name	Tm	Lg	G	PA
DONLIN, M.	BU	TCBA	23	659
SCHMIDT, B.	ME	TCBA	17	467
EVERS, J.	HH	TCBA	15	469
BALL, N.	SO	TCBA	15	568
BRANSFIELD, K.	CS	TCBA	15	603
HULSWITT, R.	BE	TCBA	15	606
COBB, T.	BU	TCBA	15	607
WAGNER, H.	WA	TCBA	15	693

3 players tied at 14



The 10 players with the highest Total Average

Name	Tm	Lg	TA	PA
WAGNER, H.	WA	TCBA	.970	693
DONLIN, M.	BU	TCBA	.883	659
COBB, T.	BU	TCBA	.851	607
McINTYRE, M.	CS	TCBA	.799	683
TITUS, J.	CS	TCBA	.791	587
BRANSFIELD, K.	CS	TCBA	.783	603
CRAWFORD, S.	GW	TCBA	.740	686
HEMPHILL, C.	CL	TCBA	.725	609
BRESNAHAN, R.	GW	TCBA	.723	600
STAHL, J.	WA	TCBA	.691	626

The 10 players with the most Runs Scored

Name	Tm	Lg	R	PA
McINTYRE, M.	CS	TCBA	114	683
DEVLIN, A.	GW	TCBA	108	683
WAGNER, H.	WA	TCBA	108	693
MAGEE, S.	BU	TCBA	104	601
DONLIN, M.	BU	TCBA	95	659
COBB, T.	BU	TCBA	90	607
CRAWFORD, S.	GW	TCBA	88	686
BRESNAHAN, R.	GW	TCBA	86	600
TENNEY, F.	CL	TCBA	84	706
LAJOIE, N.	BR	TCBA	82	690

The 11 players with the most Hits

Name	Tm	Lg	H	PA
DONLIN, M.	BU	TCBA	212	659
WAGNER, H.	WA	TCBA	209	693
CRAWFORD, S.	GW	TCBA	194	686
BRANSFIELD, K.	CS	TCBA	188	603
COBB, T.	BU	TCBA	180	607
McINTYRE, M.	CS	TCBA	178	683
SEYMOUR, C.	BR	TCBA	170	668
STONE, G.	BE	TCBA	163	663
CLARKE, F.	MI	TCBA	161	659

2 players tied at 156

The 10 players with the most Runs Contributed

Name	Tm	Lg	RCON	PA
WAGNER, H.	WA	TCBA	48.3	693
DONLIN, M.	BU	TCBA	36.8	659
COBB, T.	BU	TCBA	27.3	607
BRANSFIELD, K.	CS	TCBA	20.3	603
McINTYRE, M.	CS	TCBA	19.0	683
TITUS, J.	CS	TCBA	17.9	587
CRAWFORD, S.	GW	TCBA	17.7	686
BRESNAHAN, R.	GW	TCBA	12.4	600
HEMPHILL, C.	CL	TCBA	9.3	609
MAGEE, S.	BU	TCBA	5.0	601

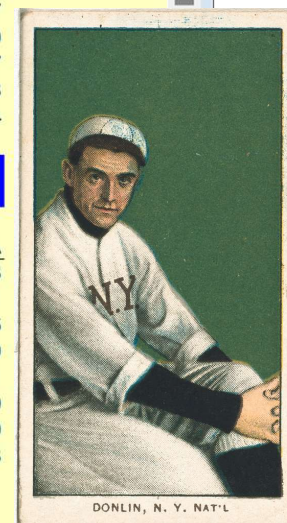
The 10 players with the most Runs Batted In

Name	Tm	Lg	RBI	PA
CRAWFORD, S.	GW	TCBA	105	686
DONLIN, M.	BU	TCBA	91	659
STAHL, J.	WA	TCBA	90	626
CLARKE, F.	MI	TCBA	86	659
KONETCHY, E.	GW	TCBA	85	641
COBB, T.	BU	TCBA	83	607
MURPHY, D.	SO	TCBA	79	569
TINKER, J.	PR	TCBA	79	637
DAVIS, H.	BR	TCBA	77	613
JORDAN, T.	BE	TCBA	76	604

The 11 players with the most Doubles

Name	Tm	Lg	2B	PA
WAGNER, H.	WA	TCBA	42	693
MAGEE, S.	BU	TCBA	39	601
CRAWFORD, S.	GW	TCBA	39	686
MURPHY, D.	SO	TCBA	38	569
STOVALL, G.	PR	TCBA	36	621
BRESNAHAN, R.	GW	TCBA	34	600
DONLIN, M.	BU	TCBA	34	659
DAVIS, H.	BR	TCBA	33	613

3 players tied at 32



The 10 players with the most Triples

Name	Tm	Lg	3B	PA
COBB, T.	BU	TCBA	23	607
MURRAY, R.	TU	TCBA	18	637
MAGEE, S.	BU	TCBA	16	601
HULSWITT, R.	BE	TCBA	15	606
ROSSMAN, C.	MI	TCBA	14	473
STAHL, J.	WA	TCBA	14	626
BARRY, J.	ME	TCBA	13	511
GRANT, E.	LI	TCBA	13	544
McINTYRE, M.	CS	TCBA	13	683
CRAWFORD, S.	GW	TCBA	13	686

The 15 players with the most Home Runs

Name	Tm	Lg	HR	PA
JORDAN, T.	BE	TCBA	14	604
TINKER, J.	PR	TCBA	9	637
SEYMOUR, C.	BR	TCBA	8	668
Lyon, D.	HH	TCBA	6	543
STONE, G.	BE	TCBA	6	663
WAGNER, H.	WA	TCBA	6	693

9 players tied at 5

The 10 players with the most Walks

Name	Tm	Lg	BB	PA
McINTYRE, M.	CS	TCBA	94	683
JONES, F.	SO	TCBA	89	675
JORDAN, T.	BE	TCBA	78	604
DEVLIN, A.	GW	TCBA	78	683
BRESNAHAN, R.	GW	TCBA	73	600
EVERS, J.	HH	TCBA	72	469
TENNEY, F.	CL	TCBA	72	706
ABBATICCHIO, E.	PR	TCBA	71	538
WAGNER, H.	WA	TCBA	71	693
CLARKE, J.	TU	TCBA	70	502

The 10 players with the most Strikeouts

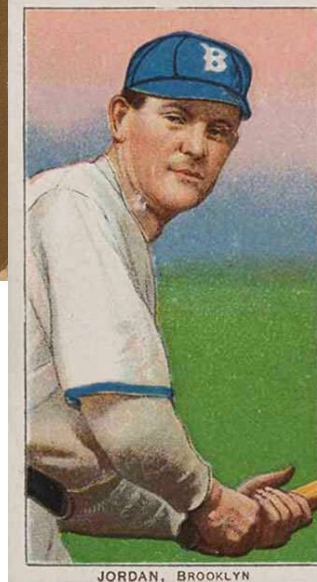
Name	Tm	Lg	SO	PA
Katon, N.	BU	TCBA	117	609
Sajdak, K.	WA	TCBA	116	602
Lyon, D.	HH	TCBA	109	543
Meade, L.	BE	TCBA	103	597
BEMIS, H.	CS	TCBA	94	592
STEINFELDT, H.	CL	TCBA	94	628
TANNEHILL, L.	ME	TCBA	89	587
WAGNER, H.	TU	TCBA	87	579
HULSWITT, R.	BE	TCBA	85	606
BRADLEY, B.	TU	TCBA	85	617

The 10 players with the most Left On Base

Name	Tm	Lg	LOB	PA
KONETCHY, E.	GW	TCBA	274	641
STEINFELDT, H.	CL	TCBA	271	628
Katon, N.	BU	TCBA	267	609
MURPHY, D.	SO	TCBA	251	569
UNGLAUB, B.	SO	TCBA	248	578
CRAWFORD, S.	GW	TCBA	247	686
BEMIS, H.	CS	TCBA	238	592
Meade, L.	BE	TCBA	230	597
KNABE, O.	GW	TCBA	230	603
CLARKE, F.	MI	TCBA	228	659

The 10 players with the most Grounded Into Double Plays

Name	Tm	Lg	GDP	PA
Katon, N.	BU	TCBA	28	609
Meade, L.	BE	TCBA	20	597
Sajdak, K.	WA	TCBA	18	602
TANNEHILL, L.	ME	TCBA	17	587
Braun, R.	HP	TCBA	16	313
Hobbs, R.	CL	TCBA	15	298
COLLINS, J.	HH	TCBA	15	516
LOBERT, H.	HH	TCBA	15	654
CLARKE, F.	MI	TCBA	15	659
DAHLEN, B.	GW	TCBA	14	607



The 11 players with the most MultiHit Games

Name	Tm	Lg	MHG	PA
DONLIN, M.	BU	TCBA	62	659
WAGNER, H.	WA	TCBA	59	693
BRANSFIELD, K.	CS	TCBA	54	603
COBB, T.	BU	TCBA	53	607
CRAWFORD, S.	GW	TCBA	53	686
McINTYRE, M.	CS	TCBA	50	683
MURRAY, R.	TU	TCBA	46	637
BRESNAHAN, R.	GW	TCBA	44	600

3 players tied at 43

The 11 players with the longest Stolen Base Streak Season

Name	Tm	Lg	SB	ASB
PATTEE, H.	HP	TCBA	15	52
JONES, D.	SO	TCBA	13	15
ATZ, J.	BR	TCBA	11	21
CLYMER, O.	BE	TCBA	10	22
HOFFMAN, D.	LT	TCBA	10	24
HARTZELL, R.	HP	TCBA	10	37
LOBERT, H.	HH	TCBA	10	62

4 players tied at 9

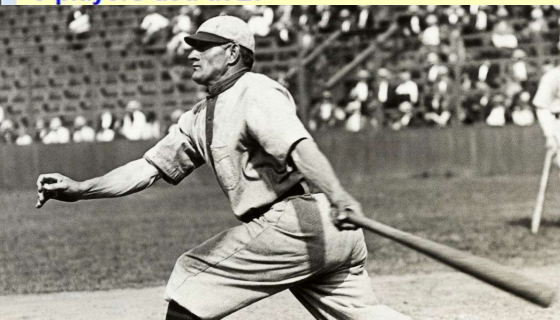
The 11 players with the most Stolen Bases

Name	Tm	Lg	SB	ASB
WAGNER, H.	WA	TCBA	45	66
PATTEE, H.	HP	TCBA	40	52
HEMPHILL, C.	CL	TCBA	40	59
STAHL, J.	WA	TCBA	39	62
LOBERT, H.	HH	TCBA	38	62
DOUGHERTY, P.	ME	TCBA	33	51
CLARKE, J.	TU	TCBA	31	46
BEMIS, H.	CS	TCBA	31	52

3 players tied at 27

The 10 players with the highest Stolen Base Percentage

Name	Tm	Lg	SBP	ASB
SLAGLE, J.	PR	TCBA	84.6	26
HOFFMAN, D.	LT	TCBA	83.3	24
TURNER, T.	CS	TCBA	78.1	32
PATTEE, H.	HP	TCBA	76.9	52
GESSLER, D.	MI	TCBA	76.2	21
CHASE, H.	HP	TCBA	76.0	25
SCHULTE, W.	HP	TCBA	73.9	23
HARTZELL, R.	HP	TCBA	70.3	37
SHANNON, S.	BR	TCBA	70.0	20
WAGNER, H.	WA	TCBA	68.2	66



Pitchers



The 11 players with the best Wins - Losses

Name	Tm	Lg	W - L	PCT
MATHEWSON, C.	CL	TCBA	35- 8	.814
JOSS, A.	WA	TCBA	27- 8	.771
WALSH, E.	CS	TCBA	27-12	.692
POWELL, J.	MI	TCBA	26- 6	.813
McQUILLAN, G.	PR	TCBA	24-12	.667
BROWN, T.	BE	TCBA	24-14	.632
HOWELL, H.	BE	TCBA	23-10	.697
WILLIS, V.	BR	TCBA	23-14	.622
YOUNG, C.	TU	TCBA	22-15	.595

2 players tied at 21

The 10 players with the lowest Earned Run Average

Name	Tm	Lg	ERA	IP
MATHEWSON, C.	CL	TCBA	.90	380.1
JOSS, A.	WA	TCBA	1.05	342.2
YOUNG, C.	TU	TCBA	1.22	340.1
BROWN, T.	BE	TCBA	1.30	339.1
WALSH, E.	CS	TCBA	1.30	379.2
McQUILLAN, G.	PR	TCBA	1.65	332.2
DINNEEN, B.	WA	TCBA	1.68	177.0
PFIESTER, J.	CL	TCBA	1.70	280.0
JOHNSON, W.	TU	TCBA	1.77	284.2
EWING, B.	BR	TCBA	1.79	216.1

The 10 players with the most Innings Pitched

Name	Tm	Lg	IP	G
MATHEWSON, C.	CL	TCBA	380.1	47
WALSH, E.	CS	TCBA	379.2	47
JOSS, A.	WA	TCBA	342.2	44
YOUNG, C.	TU	TCBA	340.1	41
BROWN, T.	BE	TCBA	339.1	41
McQUILLAN, G.	PR	TCBA	332.2	40
RAYMOND, B.	BU	TCBA	331.2	42
WADDELL, R.	PR	TCBA	325.0	41
REULBACH, E.	MI	TCBA	324.1	45
WILHELM, K.	SO	TCBA	322.2	44

The 10 players with the highest Win Percentage

Name	Tm	Lg	PCT	DEC
MATHEWSON, C.	CL	TCBA	.814	43
POWELL, J.	MI	TCBA	.813	32
JOSS, A.	WA	TCBA	.771	35
DINNEEN, B.	WA	TCBA	.762	21
COAKLEY, A.	BU	TCBA	.750	28
WILHELM, K.	SO	TCBA	.700	30
HOWELL, H.	BE	TCBA	.697	33
WALSH, E.	CS	TCBA	.692	39
HUGHES, L.	SO	TCBA	.692	26
CHECH, C.	MI	TCBA	.682	22

The 10 players with the most Earned Runs Prevented

Name	Tm	Lg	ERPT	IP
MATHEWSON, C.	CL	TCBA	74.2	380.1
JOSS, A.	WA	TCBA	61.1	342.2
WALSH, E.	CS	TCBA	57.0	379.2
YOUNG, C.	TU	TCBA	54.4	340.1
BROWN, T.	BE	TCBA	51.1	339.1
McQUILLAN, G.	PR	TCBA	37.1	332.2
PFIESTER, J.	CL	TCBA	29.6	280.0
JOHNSON, W.	TU	TCBA	28.0	284.2
HOWELL, H.	BE	TCBA	26.5	320.1
POWELL, J.	MI	TCBA	25.9	281.0

The 10 players with the lowest Opposition Batting Average

Name	Tm	Lg	OBA	IP
JOSS, A.	WA	TCBA	.153	342.2
COVELESKI, H.	CL	TCBA	.153	58.0
MATHEWSON, C.	CL	TCBA	.154	380.1
BROWN, T.	BE	TCBA	.164	339.1
McQUILLAN, G.	PR	TCBA	.167	332.2
YOUNG, C.	TU	TCBA	.172	340.1
WALSH, E.	CS	TCBA	.174	379.2
WADDELL, R.	PR	TCBA	.177	325.0
STEELE, E.	ME	TCBA	.178	133.0
DOSCHER, J.	CL	TCBA	.186	56.0



MATHEWSON, N. Y. NAT'L

The 14 players with the most Games Started

Name	Tm	Lg	GS	IP-s
MATHEWSON, C.	CL	TCBA	42	374.1
RAYMOND, B.	BU	TCBA	42	331.2
REULBACH, E.	MI	TCBA	41	321.0
WILHELM, K.	SO	TCBA	41	305.2
WALSH, E.	CS	TCBA	40	359.0
BROWN, T.	BE	TCBA	40	339.1
YOUNG, C.	TU	TCBA	39	338.2
JOSS, A.	WA	TCBA	38	334.1
WHITE, D.	LI	TCBA	38	303.2

5 players tied at 37

The 12 players with the most Complete Games

Name	Tm	Lg	CG	GS
MATHEWSON, C.	CL	TCBA	37	42
WADDELL, R.	PR	TCBA	34	36
WALSH, E.	CS	TCBA	33	40
McQUILLAN, G.	PR	TCBA	30	37
BROWN, T.	BE	TCBA	30	40
WILTSE, H.	BE	TCBA	27	35
JOSS, A.	WA	TCBA	27	38
LUSH, J.	HH	TCBA	25	30
YOUNG, C.	TU	TCBA	25	39

3 players tied at 24

The 10 players with the longest Winning Streak Current

Name	Tm	Lg	W	GS
HOWELL, H.	BE	TCBA	8	37
CHECH, C.	MI	TCBA	5	21
BEEBE, F.	GW	TCBA	5	25
JOSS, A.	WA	TCBA	5	38
WHITE, D.	LI	TCBA	5	38
WALSH, E.	CS	TCBA	5	40
McGINNITY, J.	SO	TCBA	4	9
DUBUC, J.	GW	TCBA	3	10
COAKLEY, A.	BU	TCBA	3	30
LUSH, J.	HH	TCBA	3	30

The 13 players with the most Quality Starts

Name	Tm	Lg	QS	GS
JOSS, A.	WA	TCBA	37	38
MATHEWSON, C.	CL	TCBA	37	42
WALSH, E.	CS	TCBA	33	40
YOUNG, C.	TU	TCBA	31	39
BROWN, T.	BE	TCBA	31	40
McQUILLAN, G.	PR	TCBA	29	37
WILLIS, V.	BR	TCBA	29	37
RAYMOND, B.	BU	TCBA	28	42
REULBACH, E.	MI	TCBA	27	41

4 players tied at 26

The 15 players with the most Shutouts

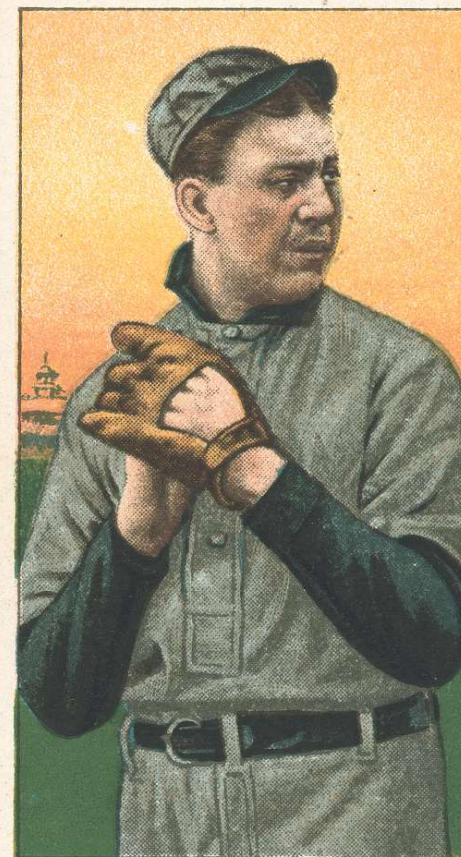
Name	Tm	Lg	SHO	GS
MATHEWSON, C.	CL	TCBA	16	42
McQUILLAN, G.	PR	TCBA	11	37
WALSH, E.	CS	TCBA	8	40
PFIESTER, J.	CL	TCBA	7	34
BURNS, B.	TU	TCBA	6	22
POWELL, J.	MI	TCBA	6	34
YOUNG, C.	TU	TCBA	6	39

8 players tied at 5

The 13 players with the longest No Wins Streak Current

Name	Tm	Lg	NoW	GS
FLAHERTY, P.	PR	TCBA	12	14
HIGGINBOTHAM, I.	ME	TCBA	8	11
SPADE, B.	BU	TCBA	7	24
MARTIN, D.	CL	TCBA	6	6

9 players tied at 5



JOSS, CLEVELAND

The 10 players with the least Offensive Support Per 9 Innings

Name	Tm	Lg	SUP/9	IP-s
LAKE, J.	LI	TCBA	1.8	192.0
KEELEY, B.	HP	TCBA	2.2	167.1
FRASER, C.	ME	TCBA	2.2	154.2
CAMNITZ, H.	BR	TCBA	2.3	245.0
SMITH, F.	LT	TCBA	2.4	297.2
SALLEE, S.	HP	TCBA	2.5	206.0
RHOADS, B.	SO	TCBA	2.6	205.1
MORGAN, C.	CS	TCBA	2.6	214.1
CORRIDON, F.	PR	TCBA	2.6	180.1
YOUNG, C.	TU	TCBA	2.7	338.2

The 10 players with the most Strikeouts

Name	Tm	Lg	SO	IP
MATHEWSON, C.	CL	TCBA	335	380.1
WALSH, E.	CS	TCBA	284	379.2
RUCKER, N.	LT	TCBA	270	308.2
WADDELL, R.	PR	TCBA	251	325.0
OVERALL, O.	BR	TCBA	214	240.0
JOHNSON, W.	TU	TCBA	192	284.2
HUGHES, L.	SO	TCBA	180	259.2
CAMNITZ, H.	BR	TCBA	171	262.2
DONOVAN, W.	BR	TCBA	168	242.0
YOUNG, C.	TU	TCBA	167	340.1

The 10 players with the lowest Baserunners Per 9 Innings, Starting

Name	Tm	Lg	BR/9-s	IP-s
MATHEWSON, C.	CL	TCBA	5.9	374.1
JOSS, A.	WA	TCBA	6.4	334.1
BROWN, T.	BE	TCBA	6.7	339.1
WALSH, E.	CS	TCBA	6.9	359.0
YOUNG, C.	TU	TCBA	7.1	338.2
McQUILLAN, G.	PR	TCBA	7.8	330.0
WADDELL, R.	PR	TCBA	8.3	316.0
LUSH, J.	HH	TCBA	8.3	269.0
WILHELM, K.	SO	TCBA	8.6	305.2
PFIESTER, J.	CL	TCBA	8.7	280.0

The 10 players with the most Offensive Support Per 9 Innings

Name	Tm	Lg	SUP/9	IP-s
POWELL, J.	MI	TCBA	5.4	281.0
COAKLEY, A.	BU	TCBA	4.8	258.2
LIEBHARDT, G.	BU	TCBA	4.4	217.0
JOHNSON, W.	TU	TCBA	4.3	283.2
JOSS, A.	WA	TCBA	4.3	334.1
BENDER, C.	BU	TCBA	4.2	162.1
CICOTTE, E.	GW	TCBA	4.1	228.2
MATHEWSON, C.	CL	TCBA	4.1	374.1
LEIFIELD, L.	WA	TCBA	4.1	231.2
REULBACH, E.	MI	TCBA	3.9	321.0

The 10 players with the highest Strikeouts Per 9 Innings, Starting

Name	Tm	Lg	SO/9-s	IP-s
OVERALL, O.	BR	TCBA	8.0	240.0
MATHEWSON, C.	CL	TCBA	8.0	374.1
RUCKER, N.	LT	TCBA	7.8	294.2
WADDELL, R.	PR	TCBA	7.0	316.0
BENDER, C.	BU	TCBA	6.8	162.1
WALSH, E.	CS	TCBA	6.7	359.0
DONOVAN, W.	BR	TCBA	6.3	236.1
HUGHES, L.	SO	TCBA	6.2	248.2
JOHNSON, W.	TU	TCBA	6.1	283.2
CAMNITZ, H.	BR	TCBA	6.0	245.0

The 10 players with the highest Baserunners Per 9 Innings, Starting

Name	Tm	Lg	BR/9-s	IP-s
SMITH, C.	HP	TCBA	14.5	188.1
LAKE, J.	LI	TCBA	14.3	192.0
LUNDGREN, C.	LI	TCBA	13.2	182.2
KEELEY, B.	HP	TCBA	13.1	167.1
FRASER, C.	ME	TCBA	12.5	154.2
SPARKS, T.	LT	TCBA	12.3	172.0
RUCKER, N.	LT	TCBA	12.0	294.2
SALLEE, S.	HP	TCBA	12.0	206.0
LEIFIELD, L.	WA	TCBA	11.9	231.2
McGLYNN, S.	LI	TCBA	11.9	166.2



The 10 players with the lowest Hits Per 9 Innings, Starting

Name	Tm	Lg	H/9-s	IP-s
MATHEWSON, C.	CL	TCBA	4.7	374.1
JOSS, A.	WA	TCBA	4.8	334.1
McQUILLAN, G.	PR	TCBA	5.0	330.0
BROWN, T.	BE	TCBA	5.1	339.1
YOUNG, C.	TU	TCBA	5.3	338.2
WADDELL, R.	PR	TCBA	5.4	316.0
WALSH, E.	CS	TCBA	5.5	359.0
CAMNITZ, H.	BR	TCBA	6.0	245.0
PFIESTER, J.	CL	TCBA	6.1	280.0
DINNEEN, B.	WA	TCBA	6.2	156.0

The 10 players with the lowest Walks Per 9 Innings, Starting

Name	Tm	Lg	BB/9-s	IP-s
MATHEWSON, C.	CL	TCBA	.9	374.1
BENDER, C.	BU	TCBA	.9	162.1
WALSH, E.	CS	TCBA	1.2	359.0
BROWN, T.	BE	TCBA	1.4	339.1
JOSS, A.	WA	TCBA	1.4	334.1
BURNS, B.	TU	TCBA	1.5	173.2
HOWELL, H.	BE	TCBA	1.6	309.2
LEEVEER, S.	MI	TCBA	1.6	174.0
LUSH, J.	HH	TCBA	1.7	269.0
WINTER, G.	ME	TCBA	1.8	204.0

The 13 players with the lowest Home Runs Per 9 Innings, Starting

Name	Tm	Lg	HR/9-s	IP-s
13 players tied at 0.00				

The 10 players with the highest Hits Per 9 Innings, Starting

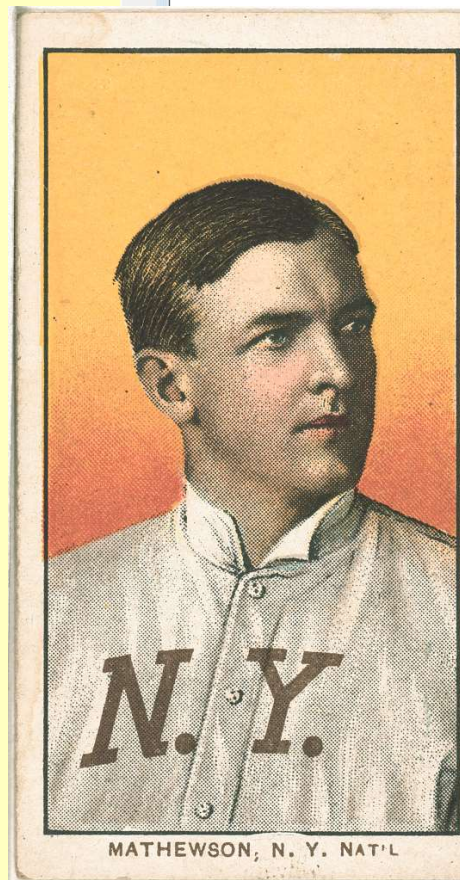
Name	Tm	Lg	H/9-s	IP-s
LAKE, J.	LI	TCBA	10.4	192.0
LUNDGREN, C.	LI	TCBA	10.1	182.2
McGLYNN, S.	LI	TCBA	9.8	166.2
SMITH, C.	HP	TCBA	9.6	188.1
KEELEY, B.	HP	TCBA	9.5	167.1
ORTH, A.	HP	TCBA	9.4	207.0
SPARKS, T.	LT	TCBA	9.4	172.0
CAMPBELL, B.	WA	TCBA	8.6	229.2
SALLEE, S.	HP	TCBA	8.6	206.0
KILLIAN, E.	GW	TCBA	8.6	183.0

The 10 players with the highest Walks Per 9 Innings, Starting

Name	Tm	Lg	BB/9-s	IP-s
FRASER, C.	ME	TCBA	4.7	154.2
SMITH, C.	HP	TCBA	4.3	188.1
RUCKER, N.	LT	TCBA	4.0	294.2
MORGAN, C.	CS	TCBA	3.8	214.1
LEIFIELD, L.	WA	TCBA	3.8	231.2
BERGER, H.	GW	TCBA	3.6	216.1
BEEBE, F.	GW	TCBA	3.5	185.0
LAKE, J.	LI	TCBA	3.4	192.0
LIEBHARDT, G.	BU	TCBA	3.3	217.0
KEELEY, B.	HP	TCBA	3.1	167.1

The 10 players with the highest Home Runs Per 9 Innings, Starting

Name	Tm	Lg	HR/9-s	IP-s
MORGAN, C.	CS	TCBA	.42	214.1
ORTH, A.	HP	TCBA	.35	207.0
LAKE, J.	LI	TCBA	.33	192.0
LUNDGREN, C.	LI	TCBA	.25	182.2
FRASER, C.	ME	TCBA	.23	154.2
LINDAMAN, V.	LT	TCBA	.22	282.1
BENDER, C.	BU	TCBA	.22	162.1
MADDOX, N.	CS	TCBA	.18	292.1
KEELEY, B.	HP	TCBA	.16	167.1
SPARKS, T.	LT	TCBA	.16	172.0





OH WHAT A RELIEF

IT IS...

The 14 players with the most Saves

Name	Tm	Lg	SV	SOPP
Wood, W.	BR	TCBA	16	94.1
COVELESKI, H.	CL	TCBA	10	100.0
McGINNITY, J.	SO	TCBA	10	76.9
RICHIE, L.	MI	TCBA	8	80.0
YOUNG, H.	SO	TCBA	8	61.5
SUGGS, G.	ME	TCBA	6	60.0
ARELLANES, F.	BE	TCBA	5	100.0
CHECH, C.	MI	TCBA	5	100.0
RYAN, J.	WA	TCBA	5	62.5

5 players tied at 4

The 3 players with the lowest Earned Run Average, Relieving

Name	Tm	Lg	ERA-r	IP-r
ROWAN, J.	TU	TCBA	1.49	54.1
VICKERS, R.	BR	TCBA	2.21	53.0
MANUEL, M.	LI	TCBA	2.92	64.2

The 10 players with the most Innings Pitched, Relieving

Name	Tm	Lg	IP-r	GIR
MANUEL, M.	LI	TCBA	64.2	42
ROWAN, J.	TU	TCBA	54.1	35
VICKERS, R.	BR	TCBA	53.0	25
TANNEHILL, J.	TU	TCBA	51.0	27
PELTY, B.	HP	TCBA	43.1	15
MANNING, R.	CS	TCBA	43.1	29
WILLETT, E.	SO	TCBA	42.0	19
RYAN, J.	WA	TCBA	41.0	24
Braun, R.	HP	TCBA	40.0	16
BOULTES, J.	GW	TCBA	39.2	22

The 12 players with the most Games in Relief

Name	Tm	Lg	GIR	IP-r
MANUEL, M.	LI	TCBA	42	64.2
ROWAN, J.	TU	TCBA	35	54.1
CHAPPELLE, B.	MI	TCBA	32	39.0
YOUNG, H.	SO	TCBA	30	35.1
MANNING, R.	CS	TCBA	29	43.1
RICHIE, L.	MI	TCBA	29	38.0
MAXWELL, B.	LI	TCBA	28	39.1
TANNEHILL, J.	TU	TCBA	27	51.0

4 players tied at 25

The 16 players with the most Blown Saves

Name	Tm	Lg	BS	GIR
SUGGS, G.	ME	TCBA	3	23
YOUNG, H.	SO	TCBA	3	30
ROWAN, J.	TU	TCBA	3	35
MANUEL, M.	LI	TCBA	3	42

12 players tied at 2

The 1 player with the highest Save Opportunity Percentage

Name	Tm	Lg	SOPP	SOP
Wood, W.	BR	TCBA	94.1	17

The 3 players with the most Earned Runs Prevented, Relieving

Name	Tm	Lg	ERPT-r	IP-r
ROWAN, J.	TU	TCBA	7.0	54.1
VICKERS, R.	BR	TCBA	2.6	53.0
MANUEL, M.	LI	TCBA	-1.9	64.2

The 10 players with the most Relief Points

Name	Tm	Lg	RPT	GIR
Wood, W.	BR	TCBA	48	17
COVELESKI, H.	CL	TCBA	28	18
McGINNITY, J.	SO	TCBA	26	22
RICHIE, L.	MI	TCBA	26	29
YOUNG, H.	SO	TCBA	26	30
KRAUSE, H.	HP	TCBA	20	19
SUGGS, G.	ME	TCBA	18	23
ARELLANES, F.	BE	TCBA	17	21
RYAN, J.	WA	TCBA	17	24
BOULTES, J.	GW	TCBA	15	22

The 12 players with the most Games Finished

Name	Tm	Lg	GF	GIR
MANNING, R.	CS	TCBA	25	29
MANUEL, M.	LI	TCBA	24	42
YOUNG, H.	SO	TCBA	21	30
VICKERS, R.	BR	TCBA	19	25
SUGGS, G.	ME	TCBA	18	23
RICHIE, L.	MI	TCBA	17	29

6 players tied at 16

The 16 players with the most Holds

Name	Tm	Lg	HLD	GIR
CARTER, N.	SO	TCBA	7	24
FALKENBERG, C.	SO	TCBA	4	25
TANNEHILL, J.	TU	TCBA	4	27
FLATER, J.	BE	TCBA	3	25
CHAPPELLE, B.	MI	TCBA	3	32
ROWAN, J.	TU	TCBA	3	35

10 players tied at 2

The 13 players with the most Inherited Runners

Name	Tm	Lg	IR	GIR
MANUEL, M.	LI	TCBA	35	42
KRAUSE, H.	HP	TCBA	26	19
SUGGS, G.	ME	TCBA	23	23
ROWAN, J.	TU	TCBA	22	35
MAXWELL, B.	LI	TCBA	21	28
ALTROCK, N.	MI	TCBA	20	23
BRANDOM, C.	TU	TCBA	20	23
MANNING, R.	CS	TCBA	20	29
HOLMES, J.	HH	TCBA	19	13

4 players tied at 18

The 10 players with the most Strikeouts, Relieving

Name	Tm	Lg	SO-r	IP-r
ROWAN, J.	TU	TCBA	41	54.1
VICKERS, R.	BR	TCBA	35	53.0
LAKE, J.	LI	TCBA	30	35.0
MANUEL, M.	LI	TCBA	28	64.2
SPONGBERG, C.	HP	TCBA	27	36.0
MAXWELL, B.	LI	TCBA	27	39.1
TANNEHILL, J.	TU	TCBA	26	51.0
FERGUSON, G.	WA	TCBA	25	33.2
BOULTES, J.	GW	TCBA	24	39.2
YOUNG, H.	SO	TCBA	22	35.1

The 3 players with the lowest Baserunners Per 9 Innings, Relieving

Name	Tm	Lg	BR/9-r	IP-r
ROWAN, J.	TU	TCBA	9.1	54.1
VICKERS, R.	BR	TCBA	9.5	53.0
MANUEL, M.	LI	TCBA	10.9	64.2

The 3 players with the lowest Hits Per 9 Innings, Relieving

Name	Tm	Lg	H/9-r	IP-r
ROWAN, J.	TU	TCBA	5.6	54.1
VICKERS, R.	BR	TCBA	6.5	53.0
MANUEL, M.	LI	TCBA	7.4	64.2

The 3 players with the lowest Walks Per 9 Innings, Relieving

Name	Tm	Lg	BB/9-r	IP-r
MANUEL, M.	LI	TCBA	3.2	64.2
VICKERS, R.	BR	TCBA	3.7	53.0
ROWAN, J.	TU	TCBA	4.5	54.1

The 3 players with the lowest Home Runs Per 9 Innings, Relieving

Name	Tm	Lg	HR/9-r	IP-r
VICKERS, R.	BR	TCBA	.00	53.0
ROWAN, J.	TU	TCBA	.17	54.1
MANUEL, M.	LI	TCBA	.28	64.2

The 2 players with the lowest Inherited Runners Scored Percentage

Name	Tm	Lg	IRSP	IR
MANUEL, M.	LI	TCBA	40.0	35
KRAUSE, H.	HP	TCBA	42.3	26

The 3 players with the highest Strikeouts Per 9 Innings, Relieving

Name	Tm	Lg	SO/9-r	IP-r
ROWAN, J.	TU	TCBA	6.8	54.1
VICKERS, R.	BR	TCBA	5.9	53.0
MANUEL, M.	LI	TCBA	3.9	64.2

The 3 players with the highest Baserunners Per 9 Innings, Relieving

Name	Tm	Lg	BR/9-r	IP-r
MANUEL, M.	LI	TCBA	10.9	64.2
VICKERS, R.	BR	TCBA	9.5	53.0
ROWAN, J.	TU	TCBA	9.1	54.1

The 3 players with the highest Hits Per 9 Innings, Relieving

Name	Tm	Lg	H/9-r	IP-r
MANUEL, M.	LI	TCBA	7.4	64.2
VICKERS, R.	BR	TCBA	6.5	53.0
ROWAN, J.	TU	TCBA	5.6	54.1

The 3 players with the highest Walks Per 9 Innings, Relieving

Name	Tm	Lg	BB/9-r	IP-r
ROWAN, J.	TU	TCBA	4.5	54.1
VICKERS, R.	BR	TCBA	3.7	53.0
MANUEL, M.	LI	TCBA	3.2	64.2

The 3 players with the highest Home Runs Per 9 Innings, Relieving

Name	Tm	Lg	HR/9-r	IP-r
MANUEL, M.	LI	TCBA	.28	64.2
ROWAN, J.	TU	TCBA	.17	54.1
VICKERS, R.	BR	TCBA	.00	53.0

fielding

The 10 players with the highest Range at Second Base

Name	Tm	Lg	RNG	INN
PATTEE, H.	HP	TCBA	6.40	1176.1
KNABE, O.	GW	TCBA	5.86	1399.2
WILLIAMS, J.	ME	TCBA	5.84	1273.2
NILES, H.	LT	TCBA	5.59	969.0
HUGGINS, M.	WA	TCBA	5.58	1223.2
DOYLE, L.	SO	TCBA	5.44	729.2
LAPORTE, F.	TU	TCBA	5.43	749.0
EVERS, J.	HH	TCBA	5.30	954.1
RITCHEY, C.	MI	TCBA	5.29	978.0
Meade, L.	BE	TCBA	5.25	784.0

The 10 players with the highest Range at Third Base

Name	Tm	Lg	RNG	INN
DONOVAN, M.	MI	TCBA	3.44	999.1
DEVLIN, A.	GW	TCBA	3.35	1342.0
Sajdak, K.	WA	TCBA	3.15	1344.2
Katon, N.	BU	TCBA	3.14	1267.2
LORD, H.	HP	TCBA	3.10	1071.2
GRANT, E.	LI	TCBA	3.06	994.1
HICKMAN, C.	BE	TCBA	3.06	674.0
BRADLEY, B.	TU	TCBA	3.00	1280.2
UNGLAUB, B.	SO	TCBA	2.97	1193.0
FERRIS, H.	PR	TCBA	2.94	1316.0

The 10 players with the highest Range at Shortstop

Name	Tm	Lg	RNG	INN
WALLACE, B.	HP	TCBA	5.79	1163.2
PARENT, F.	LI	TCBA	5.75	1040.0
BALL, N.	SO	TCBA	5.71	1251.0
McBRIDE, G.	BU	TCBA	5.69	1362.2
DAHLEN, B.	GW	TCBA	5.51	1362.1
LOBERT, H.	HH	TCBA	5.49	1368.2
WAGNER, H.	WA	TCBA	5.47	1369.2
TINKER, J.	PR	TCBA	5.44	1370.0
BARRY, J.	ME	TCBA	5.36	859.2
REILLY, T.	CS	TCBA	5.31	995.1

The 10 players with the highest Fielding Average at Second Base

Name	Tm	Lg	FLD	INN
KNABE, O.	GW	TCBA	.987	1399.2
LAJOIE, N.	BR	TCBA	.985	1397.1
WILLIAMS, J.	ME	TCBA	.980	1273.2
ABBATICCHIO, E.	PR	TCBA	.977	1187.0
RITCHEY, C.	MI	TCBA	.976	978.0
HUGGINS, M.	WA	TCBA	.974	1223.2
GILBERT, B.	CS	TCBA	.968	1332.2
EVERS, J.	HH	TCBA	.967	954.1
DOYLE, L.	SO	TCBA	.967	729.2
McCONNELL, A.	BU	TCBA	.964	1170.2

The 10 players with the highest Fielding Average at Third Base

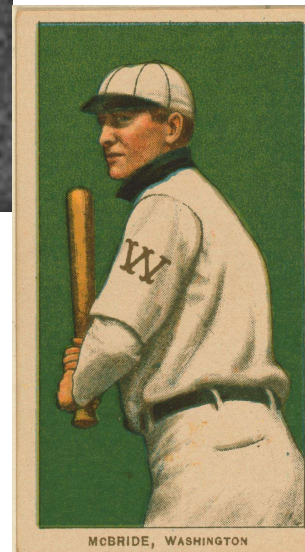
Name	Tm	Lg	FLD	INN
DONOVAN, M.	MI	TCBA	.979	999.1
FERRIS, H.	PR	TCBA	.975	1316.0
DEVLIN, A.	GW	TCBA	.975	1342.0
BRADLEY, B.	TU	TCBA	.960	1280.2
GRANT, E.	LI	TCBA	.955	994.1
SHEEHAN, T.	BR	TCBA	.953	970.2
COLLINS, J.	HH	TCBA	.952	1203.1
Katon, N.	BU	TCBA	.948	1267.2
LEACH, T.	CS	TCBA	.948	1321.2
HICKMAN, C.	BE	TCBA	.946	674.0

The 10 players with the highest Fielding Average at Shortstop

Name	Tm	Lg	FLD	INN
TINKER, J.	PR	TCBA	.976	1370.0
McBRIDE, G.	BU	TCBA	.976	1362.2
DAHLEN, B.	GW	TCBA	.966	1362.1
WAGNER, H.	TU	TCBA	.963	1386.1
BARRY, J.	ME	TCBA	.955	859.2
DAVIS, G.	BR	TCBA	.941	1123.1
PARENT, F.	LI	TCBA	.939	1040.0
BALL, N.	SO	TCBA	.933	1251.0
WAGNER, H.	WA	TCBA	.932	1369.2
WALLACE, B.	HP	TCBA	.932	1163.2



Knabe, 2b Phila. Nat.



McBRIDE, WASHINGTON

The 10 players with the highest Range in Left Field

Name	Tm	Lg	RNG	INN
CLARKE, F.	MI	TCBA	2.74	1314.1
HAHN, E.	HH	TCBA	2.31	1042.1
SHAW, A.	CL	TCBA	2.26	715.1
BATES, J.	GW	TCBA	2.26	1095.1
MURRAY, R.	TU	TCBA	2.24	1251.1
STAHL, J.	WA	TCBA	2.18	842.1
COBB, T.	BU	TCBA	2.16	1160.2
Wood, W.	BR	TCBA	1.94	799.1
JONES, F.	SO	TCBA	1.92	839.0
SCHULTE, W.	HP	TCBA	1.90	747.0

The 10 players with the highest Fielding Average in Left Field

Name	Tm	Lg	FLD	INN
CLARKE, F.	MI	TCBA	.988	1314.1
HAHN, E.	HH	TCBA	.985	1042.1
JONES, F.	SO	TCBA	.984	839.0
SHAW, A.	CL	TCBA	.968	715.1
COBB, T.	BU	TCBA	.965	1160.2
BATES, J.	GW	TCBA	.962	1095.1
MURRAY, R.	TU	TCBA	.957	1251.1
Wood, W.	BR	TCBA	.956	799.1
SCHULTE, W.	HP	TCBA	.952	747.0
STAHL, J.	WA	TCBA	.932	842.1

The 10 players with the highest Range in Center Field

Name	Tm	Lg	RNG	INN
CLARKE, J.	TU	TCBA	3.00	980.0
SPEAKER, T.	PR	TCBA	2.98	1102.1
HEMPHILL, C.	CL	TCBA	2.97	1146.2
STONE, G.	BE	TCBA	2.92	1234.2
PASKERT, D.	HH	TCBA	2.92	730.1
TITUS, J.	CS	TCBA	2.84	1230.2
SHANNON, S.	BR	TCBA	2.82	648.0
THOMAS, R.	LI	TCBA	2.81	935.0
MAGEE, S.	BU	TCBA	2.76	1145.0
GANLEY, B.	GW	TCBA	2.75	1382.2

The 10 players with the highest Fielding Average in Center Field

Name	Tm	Lg	FLD	INN
TITUS, J.	CS	TCBA	.995	1230.2
THOMAS, R.	LI	TCBA	.993	935.0
GANLEY, B.	GW	TCBA	.993	1382.2
CLARKE, J.	TU	TCBA	.991	980.0
MAGEE, S.	BU	TCBA	.983	1145.0
SPEAKER, T.	PR	TCBA	.981	1102.1
HEMPHILL, C.	CL	TCBA	.977	1146.2
STONE, G.	BE	TCBA	.976	1234.2
SHECKARD, J.	HP	TCBA	.974	1031.1
PASKERT, D.	HH	TCBA	.971	730.1

The 10 players with the highest Range in Right Field

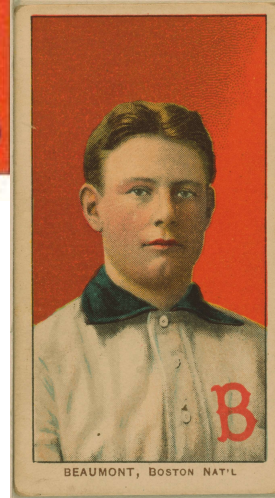
Name	Tm	Lg	RNG	INN
KANE, J.	TU	TCBA	2.40	589.0
BEAUMONT, G.	MI	TCBA	2.16	1173.0
MITCHELL, M.	WA	TCBA	2.14	1247.0
LUMLEY, H.	HH	TCBA	2.14	987.1
OSBORN, F.	PR	TCBA	2.11	1298.1
DONLIN, M.	BU	TCBA	2.10	1270.0
THONEY, J.	BE	TCBA	2.09	1050.0
SEYMOUR, C.	BR	TCBA	2.09	1371.2
HUMMEL, J.	TU	TCBA	2.02	762.2
MURPHY, D.	SO	TCBA	1.98	1179.0

The 10 players with the highest Fielding Average in Right Field

Name	Tm	Lg	FLD	INN
BEAUMONT, G.	MI	TCBA	.996	1173.0
OSBORN, F.	PR	TCBA	.993	1298.1
THONEY, J.	BE	TCBA	.992	1050.0
KANE, J.	TU	TCBA	.987	589.0
DONLIN, M.	BU	TCBA	.987	1270.0
McINTYRE, M.	CS	TCBA	.982	969.1
CRAWFORD, S.	GW	TCBA	.979	1407.0
HARTZELL, R.	HP	TCBA	.975	989.0
BROWNE, G.	LI	TCBA	.973	1139.2
HUMMEL, J.	TU	TCBA	.972	762.2



CLARK, COLUMBUS



The 10 players with the highest Fielding Average at First Base

Name	Tm	Lg	FLD	INN
JONES, T.	SO	TCBA	.998	1367.0
ROSSMAN, C.	MI	TCBA	.994	978.2
STOVALL, G.	PR	TCBA	.994	1296.1
DAVIS, H.	BR	TCBA	.994	1316.1
CHANCE, F.	ME	TCBA	.993	964.2
BRANSFIELD, K.	CS	TCBA	.993	1244.2
KONETCHY, E.	GW	TCBA	.991	1330.1
FREEMAN, J.	WA	TCBA	.991	942.2
JORDAN, T.	BE	TCBA	.990	1274.1
TENNEY, F.	CL	TCBA	.990	1386.2

The 10 players with the highest Fielding Average at Catcher

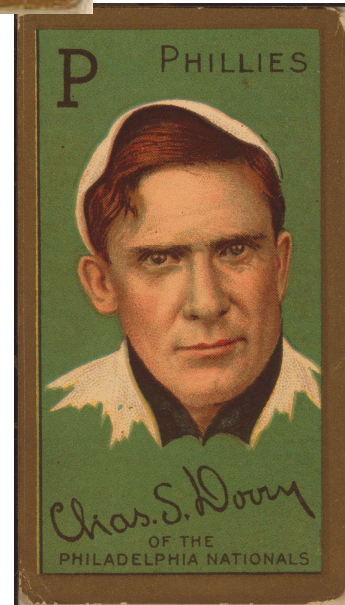
Name	Tm	Lg	FLD	INN
McFARLAND, E.	BR	TCBA	.990	1128.2
DOOIN, R.	SO	TCBA	.989	1201.0
GIBSON, G.	LT	TCBA	.988	720.1
STREET, G.	LI	TCBA	.987	970.1
SMITH, S.	BU	TCBA	.985	860.2
KLEINOW, R.	HH	TCBA	.983	603.1
SULLIVAN, B.	HP	TCBA	.982	1312.2
BRESNAHAN, R.	GW	TCBA	.979	1196.0
BOWERMAN, F.	PR	TCBA	.969	1257.2
BEMIS, H.	CS	TCBA	.968	1302.2

The 10 players with the highest Fielding Average at Pitcher

Name	Tm	Lg	FLD	INN
CORRIDON, F.	PR	TCBA	1.000	188.2
FRASER, C.	ME	TCBA	1.000	172.1
WILLETT, E.	SO	TCBA	1.000	154.0
MULLIN, G.	SO	TCBA	1.000	144.0
TAYLOR, D.	CS	TCBA	1.000	114.2
DORNER, G.	BU	TCBA	1.000	105.0
PFIESTER, J.	CL	TCBA	.985	280.0
BROWN, T.	BE	TCBA	.982	339.1
SMITH, F.	LT	TCBA	.981	316.2
CAMNITZ, H.	BR	TCBA	.978	262.2

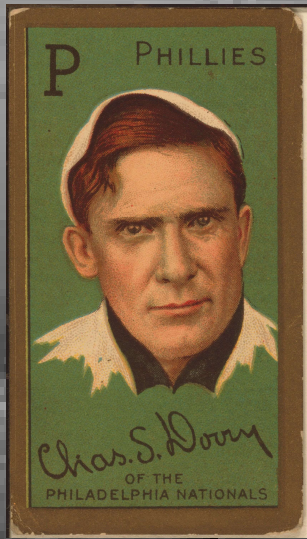
The 10 players with the lowest Opposition Stolen Base Average at Catcher

Name	Tm	Lg	OSBA	INN
DOOIN, R.	SO	TCBA	.517	1201.0
SMITH, S.	BU	TCBA	.533	860.2
BRESNAHAN, R.	GW	TCBA	.549	1196.0
SCHMIDT, B.	ME	TCBA	.593	970.2
SCHLEI, A.	CL	TCBA	.621	681.0
GIBSON, G.	LT	TCBA	.625	720.1
CLARKE, N.	LT	TCBA	.628	716.2
BOWERMAN, F.	PR	TCBA	.666	1257.2
BEMIS, H.	CS	TCBA	.670	1302.2
McLEAN, L.	TU	TCBA	.692	897.1



TCBA Origins 1908 MLB

1908 GOLD GLOVE WINNERS: P-Ed Willett, SO C-Red Dooin, SO 1B-Tom Jones, SO 2B-Otto Knabe, GW 3B-Mike Donovan, MI SS-George McBride, BU LF-Fred Clarke, MI CF-Josh Clarke, TU RF-Ginger Beaumont, MI



streaks

The 10 players with the longest Hitting Streak Current

Name	Tm	Lg	G	PA
BRIDWELL, A.	CL	TCBA	9	579
WAGNER, H.	WA	TCBA	9	693
GEHRING, H.	HP	TCBA	7	34
BURCH, A.	WA	TCBA	7	320
WILSON, C.	SO	TCBA	7	349
HUMMEL, J.	TU	TCBA	7	567
BARRY, J.	ME	TCBA	6	511
PATTEE, H.	HP	TCBA	6	526
BRANSFIELD, K.	CS	TCBA	6	603
HEMPHILL, C.	CL	TCBA	6	609

The 36 players with the longest Doubles Streak Current

Name	Tm	Lg	G	PA
BEECHER, R.	CL	TCBA	3	9
RHODES, C.	CS	TCBA	2	18
GEHRING, H.	HP	TCBA	2	34
HANNIFIN, J.	HH	TCBA	2	193
DELAHANTY, J.	BU	TCBA	2	196
NILES, H.	LT	TCBA	2	475
BRANSFIELD, K.	CS	TCBA	2	603
LEACH, T.	CS	TCBA	2	669

28 players tied at 1

The 433 players with the longest Triples Streak Current

Name	Tm	Lg	G	PA
DONLIN, M.	BU	TCBA	3	659
RICHIE, L.	MI	TCBA	1	26
OVERALL, O.	BR	TCBA	1	94
ZIMMERMAN, H.	BR	TCBA	1	127
COOMBS, J.	BR	TCBA	1	246
KEELER, W.	LT	TCBA	1	391
CLARKE, F.	MI	TCBA	1	659

426 players tied at 0

The 11 players with the longest Hitting Streak Season

Name	Tm	Lg	G	PA
DONLIN, M.	BU	TCBA	23	659
SCHMIDT, B.	ME	TCBA	17	467
EVERS, J.	HH	TCBA	15	469
BALL, N.	SO	TCBA	15	568
BRANSFIELD, K.	CS	TCBA	15	603
HULSWITT, R.	BE	TCBA	15	606
COBB, T.	BU	TCBA	15	607
WAGNER, H.	WA	TCBA	15	693

3 players tied at 14

The 38 players with the longest Doubles Streak Season

Name	Tm	Lg	G	PA
MURPHY, D.	SO	TCBA	5	569
DAVIS, H.	BR	TCBA	5	613
BRANSFIELD, K.	CS	TCBA	4	603
DONLIN, M.	BU	TCBA	4	659
CRAWFORD, S.	GW	TCBA	4	686

33 players tied at 3

The 35 players with the longest Triples Streak Season

Name	Tm	Lg	G	PA
GESSLER, D.	MI	TCBA	3	432
DONLIN, M.	BU	TCBA	3	659

33 players tied at 2



The 433 players with the longest Home Run Streak Current

Name	Tm	Lg	G	PA
MERKLE, F.	BU	TCBA	1	49
HARTZELL, R.	HP	TCBA	1	496

431 players tied at 0

The 45 players with the longest Extra Base Hit Streak Current

Name	Tm	Lg	G	PA
BEECHER, R.	CL	TCBA	3	9
BRANSFIELD, K.	CS	TCBA	3	603
DONLIN, M.	BU	TCBA	3	659
RHODES, C.	CS	TCBA	2	18
GEHRING, H.	HP	TCBA	2	34
HANNIFIN, J.	HH	TCBA	2	193
DELAHANTY, J.	BU	TCBA	2	196
NILES, H.	LT	TCBA	2	475
LEACH, T.	CS	TCBA	2	669

36 players tied at 1

The 14 players with the longest Walks Streak Current

Name	Tm	Lg	G	PA
JORDAN, T.	BE	TCBA	5	604
EVERS, J.	HH	TCBA	4	469
SHECKARD, J.	HP	TCBA	4	520
McINTYRE, M.	CS	TCBA	3	683

10 players tied at 2

The 81 players with the longest Home Run Streak Season

Name	Tm	Lg	G	PA
SHECKARD, J.	HP	TCBA	2	520
DAVIS, H.	BR	TCBA	2	613

79 players tied at 1

The 20 players with the longest Extra Base Hit Streak Season

Name	Tm	Lg	G	PA
MURPHY, D.	SO	TCBA	6	569
LEACH, T.	CS	TCBA	6	669
MAGEE, S.	BU	TCBA	5	601
DAVIS, H.	BR	TCBA	5	613
KONETCHY, E.	GW	TCBA	5	641
CRAWFORD, S.	GW	TCBA	5	686
WAGNER, H.	WA	TCBA	5	693

13 players tied at 4

The 10 players with the longest Walks Streak Season

Name	Tm	Lg	G	PA
JONES, F.	SO	TCBA	8	675
EGAN, B.	BE	TCBA	7	314
THOMAS, R.	LI	TCBA	7	485
JORDAN, T.	BE	TCBA	7	604
SLAGLE, J.	PR	TCBA	6	306
CLARKE, J.	TU	TCBA	6	502
BRESNAHAN, R.	GW	TCBA	6	600
COBB, T.	BU	TCBA	6	607
DAVIS, H.	BR	TCBA	6	613
HUGGINS, M.	WA	TCBA	6	621

The 10 players with the longest On Base Streak Current

Name	Tm	Lg	G	PA
WAGNER, H.	WA	TCBA	20	693
DONLIN, M.	BU	TCBA	16	659
EVERS, J.	HH	TCBA	14	469
TITUS, J.	CS	TCBA	14	587
BARRY, J.	ME	TCBA	13	511
PATTEE, H.	HP	TCBA	13	526
BRANSFIELD, K.	CS	TCBA	13	603
GESSLER, D.	MI	TCBA	12	432
HERZOG, B.	LI	TCBA	11	121
BURCH, A.	WA	TCBA	11	320

The 12 players with the longest Hitless Streak Current

Name	Tm	Lg	G	PA
PELTY, B.	HP	TCBA	19	47
LEEVEER, S.	MI	TCBA	14	71
POWERS, M.	LI	TCBA	11	171
FRASER, C.	ME	TCBA	10	58
JOHNSON, C.	TU	TCBA	9	18
BLISS, J.	BR	TCBA	9	95
ELBERFELD, K.	BR	TCBA	9	99

5 players tied at 8

The 10 players with the longest No Home Run Streak Current

Name	Tm	Lg	G	PA
SULLIVAN, B.	HP	TCBA	154	546
WAGNER, H.	TU	TCBA	154	579
TANNEHILL, L.	ME	TCBA	154	587
LAJOIE, N.	BR	TCBA	154	690
JONES, T.	SO	TCBA	153	590
KNABE, O.	GW	TCBA	153	603
McBRIDE, G.	BU	TCBA	152	615
STEINFELDT, H.	CL	TCBA	152	628
GANLEY, B.	GW	TCBA	152	639
McINTYRE, M.	CS	TCBA	150	683

The 10 players with the longest On Base Streak Season

Name	Tm	Lg	G	PA
DEVLIN, A.	GW	TCBA	36	683
MAGEE, S.	BU	TCBA	31	601
TITUS, J.	CS	TCBA	29	587
DONLIN, M.	BU	TCBA	27	659
GESSLER, D.	MI	TCBA	26	432
ABBATICCHIO, E.	PR	TCBA	26	538
BRANSFIELD, K.	CS	TCBA	26	603
JORDAN, T.	BE	TCBA	24	604
WAGNER, H.	WA	TCBA	24	693
SCHLEI, A.	CL	TCBA	23	302

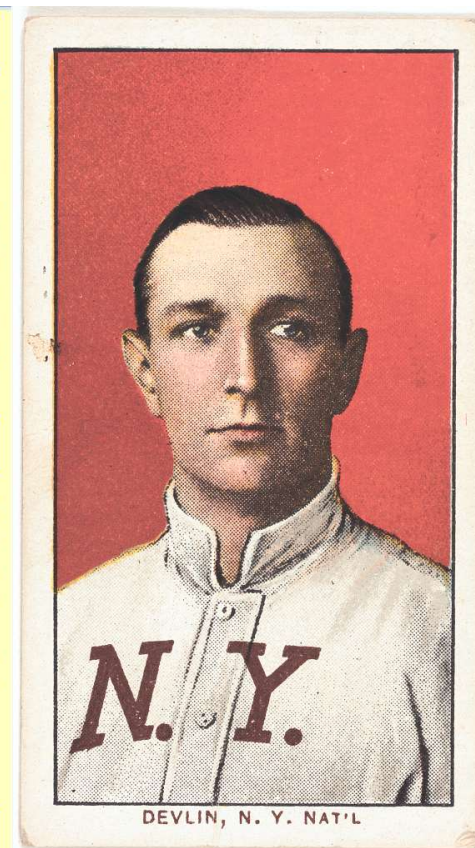
The 12 players with the longest Hitless Streak Season

Name	Tm	Lg	G	PA
STRANG, S.	HH	TCBA	25	142
PELTY, B.	HP	TCBA	19	47
THOMAS, W.	LT	TCBA	17	96
GRAHAM, B.	HH	TCBA	16	45
MOELLER, D.	TU	TCBA	15	61
JOSS, A.	WA	TCBA	15	126
NICHOLLS, S.	BU	TCBA	15	179
LEEVEER, S.	MI	TCBA	14	71
WILHELM, K.	SO	TCBA	13	121

3 players tied at 12

The 10 players with the longest No Home Run Streak Season

Name	Tm	Lg	G	PA
SULLIVAN, B.	HP	TCBA	154	546
WAGNER, H.	TU	TCBA	154	579
TANNEHILL, L.	ME	TCBA	154	587
LAJOIE, N.	BR	TCBA	154	690
JONES, T.	SO	TCBA	153	590
KNABE, O.	GW	TCBA	153	603
McBRIDE, G.	BU	TCBA	152	615
STEINFELDT, H.	CL	TCBA	152	628
GANLEY, B.	GW	TCBA	152	639
McINTYRE, M.	CS	TCBA	150	683



The 15 players with the longest No Strike Out Streak Current

Name	Tm	Lg	G	PA
TANNEHILL, J.	TU	TCBA	20	29
SHAUGHNESSY, S.	GW	TCBA	17	23
NILL, R.	CL	TCBA	16	39
HOEY, J.	WA	TCBA	15	24
WEIMER, J.	WA	TCBA	15	39
COULSON, B.	LI	TCBA	14	21
McCORMICK, M.	ME	TCBA	12	289
DALEY, T.	WA	TCBA	11	22

7 players tied at 10

The 11 players with the longest Stolen Base Streak Current

Name	Tm	Lg	SB	ASB
HOFFMAN, D.	LT	TCBA	10	24
GRAHAM, P.	CL	TCBA	9	9
CHASE, H.	HP	TCBA	8	25
MORIARTY, G.	BU	TCBA	7	7
THOMAS, W.	LT	TCBA	6	6
SCHULTE, W.	HP	TCBA	6	23

5 players tied at 5

The 10 players with the longest Winning Streak Current

Name	Tm	Lg	W	GS
HOWELL, H.	BE	TCBA	8	37
CHECH, C.	MI	TCBA	5	21
BEEBE, F.	GW	TCBA	5	25
JOSS, A.	WA	TCBA	5	38
WHITE, D.	LI	TCBA	5	38
WALSH, E.	CS	TCBA	5	40
McGINNITY, J.	SO	TCBA	4	9
DUBUC, J.	GW	TCBA	3	10
COAKLEY, A.	BU	TCBA	3	30
LUSH, J.	HH	TCBA	3	30

The 12 players with the longest No Strike Out Streak Season

Name	Tm	Lg	G	PA
McLAURIN, R.	LI	TCBA	41	211
THOMAS, W.	LT	TCBA	29	96
MARSHALL, D.	LI	TCBA	27	344
EGAN, B.	BE	TCBA	26	314
WILTSE, H.	BE	TCBA	23	107
McFARLAND, E.	BR	TCBA	23	490
TANNEHILL, J.	TU	TCBA	20	29
Pio, P.	TU	TCBA	20	216

4 players tied at 19

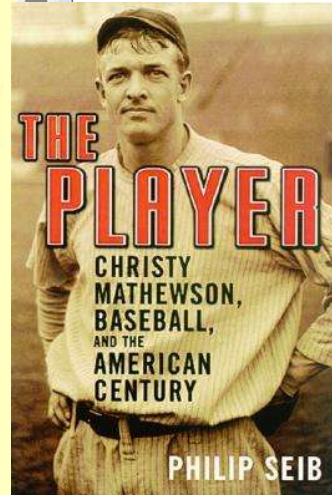
The 11 players with the longest Stolen Base Streak Season

Name	Tm	Lg	SB	ASB
PATTEE, H.	HP	TCBA	15	52
JONES, D.	SO	TCBA	13	15
ATZ, J.	BR	TCBA	11	21
CLYMER, O.	BE	TCBA	10	22
HOFFMAN, D.	LT	TCBA	10	24
HARTZELL, R.	HP	TCBA	10	37
LOBERT, H.	HH	TCBA	10	62

4 players tied at 9

The 10 players with the longest Winning Streak Season

Name	Tm	Lg	W	GS
MATHEWSON, C.	CL	TCBA	13	42
POWELL, J.	MI	TCBA	10	34
McQUILLAN, G.	PR	TCBA	10	37
DINNEEN, B.	WA	TCBA	9	18
COAKLEY, A.	BU	TCBA	9	30
HOWELL, H.	BE	TCBA	8	37
TUCKEY, T.	CS	TCBA	7	10
WILLIS, V.	BR	TCBA	7	37
JOSS, A.	WA	TCBA	6	38
BROWN, T.	BE	TCBA	6	40



The 14 players with the longest Losing Streak Current

Name	Tm	Lg	L	GS
FLAHERTY, P.	PR	TCBA	12	14
HIGGINBOTHAM, I.	ME	TCBA	8	11
WILSON, P.	ME	TCBA	4	5
LUNDGREN, C.	LI	TCBA	4	28
McINTIRE, H.	ME	TCBA	4	34

9 players tied at 3

The 14 players with the longest Quality Starts Streak Current

Name	Tm	Lg	QS	GS
JOSS, A.	WA	TCBA	31	38
McQUILLAN, G.	PR	TCBA	15	37
STEELE, E.	ME	TCBA	10	13
DONOVAN, W.	BR	TCBA	9	30
COAKLEY, A.	BU	TCBA	8	30
CHECH, C.	MI	TCBA	7	21
HOWELL, H.	BE	TCBA	7	37
WILLIS, V.	BR	TCBA	7	37
CICOTTE, E.	GW	TCBA	6	28

5 players tied at 5

The 13 players with the longest No Wins Streak Current

Name	Tm	Lg	NoW	GS
FLAHERTY, P.	PR	TCBA	12	14
HIGGINBOTHAM, I.	ME	TCBA	8	11
SPADE, B.	BU	TCBA	7	24
MARTIN, D.	CL	TCBA	6	6

9 players tied at 5

The 11 players with the longest Losing Streak Season

Name	Tm	Lg	L	GS
FLAHERTY, P.	PR	TCBA	12	14
LAKE, J.	LI	TCBA	11	29
KEELEY, B.	HP	TCBA	9	25
HIGGINBOTHAM, I.	ME	TCBA	8	11
PELTY, B.	HP	TCBA	8	12
SMITH, F.	LT	TCBA	8	37
MALLOY, H.	HH	TCBA	7	17

4 players tied at 6

The 10 players with the longest Quality Starts Streak Season

Name	Tm	Lg	QS	GS
JOSS, A.	WA	TCBA	31	38
BROWN, T.	BE	TCBA	26	40
MATHEWSON, C.	CL	TCBA	24	42
McQUILLAN, G.	PR	TCBA	15	37
DINNEEN, B.	WA	TCBA	13	18
YOUNG, C.	TU	TCBA	12	39
BENDER, C.	BU	TCBA	11	20
STEELE, E.	ME	TCBA	10	13
BERGER, H.	GW	TCBA	10	26
CAMPBELL, B.	WA	TCBA	10	31

The 10 players with the longest No Wins Streak Season

Name	Tm	Lg	NoW	GS
LATTIMORE, B.	HP	TCBA	14	18
FLAHERTY, P.	PR	TCBA	12	14
SMITH, C.	HP	TCBA	12	28
OWEN, F.	LI	TCBA	11	23
LAKE, J.	LI	TCBA	11	29
CAMPBELL, B.	WA	TCBA	10	31
MALLOY, H.	HH	TCBA	9	17
KEELEY, B.	HP	TCBA	9	25
LUNDGREN, C.	LI	TCBA	9	28
WHITE, D.	LI	TCBA	9	38

The 12 players with the longest Shutout Innings Current

Name	Tm	Lg	IP	GS
BRADY, K.	GW	TCBA	23.0	2
McQUILLAN, G.	PR	TCBA	22.0	37
LIEBHARDT, G.	BU	TCBA	17.0	28
CATES, E.	HH	TCBA	14.0	12
POWELL, J.	MI	TCBA	13.2	34
RHODES, C.	CS	TCBA	13.0	5
RHOADS, B.	SO	TCBA	12.0	27
WHITE, D.	LI	TCBA	11.1	38

4 players tied at 11.0

The 18 players with the longest Saves Streak Current

Name	Tm	Lg	SV	SOP
Wood, W.	BR	TCBA	15	17
COVELESKI, H.	CL	TCBA	10	10
ARELLANES, F.	BE	TCBA	5	5
CHECH, C.	MI	TCBA	5	5
CICOTTE, E.	GW	TCBA	3	3
SUGGS, G.	ME	TCBA	3	10
McGINNITY, J.	SO	TCBA	3	13

11 players tied at 2

The 10 players with the longest Errorless Games Streak Current

Name	Tm	Lg	G	INN
TITUS, J.	CS	TCBA	110	1230.2
BEAUMONT, G.	MI	TCBA	94	1180.0
MILAN, C.	ME	TCBA	92	961.0
DONLIN, M.	BU	TCBA	73	1319.0
THONEY, J.	BE	TCBA	66	1096.0
KANE, J.	TU	TCBA	60	909.1
HARTZELL, R.	HP	TCBA	59	1007.0
MOELLER, D.	TU	TCBA	49	112.2
BARRY, S.	BR	TCBA	46	428.2
OSBORN, F.	PR	TCBA	43	1298.1

The 10 players with the longest Shutout Innings Season

Name	Tm	Lg	IP	GS
MATHEWSON, C.	CL	TCBA	49.0	42
CHECH, C.	MI	TCBA	35.0	21
McQUILLAN, G.	PR	TCBA	30.0	37
JOSS, A.	WA	TCBA	27.0	38
PASTORIUS, J.	GW	TCBA	26.2	29
WINTER, G.	ME	TCBA	26.0	27
BERGER, H.	GW	TCBA	25.0	26
COAKLEY, A.	BU	TCBA	25.0	30
PLANK, E.	TU	TCBA	25.0	35
JOHNSON, W.	TU	TCBA	25.0	36

The 13 players with the longest Saves Streak Season

Name	Tm	Lg	SV	SOP
Wood, W.	BR	TCBA	15	17
COVELESKI, H.	CL	TCBA	10	10
McGINNITY, J.	SO	TCBA	6	13
ARELLANES, F.	BE	TCBA	5	5
CHECH, C.	MI	TCBA	5	5
RICHIE, L.	MI	TCBA	5	10
BRANDOM, C.	TU	TCBA	4	5
KRAUSE, H.	HP	TCBA	4	6

5 players tied at 3

The 11 players with the longest Errorless Games Streak Season

Name	Tm	Lg	G	INN
JONES, T.	SO	TCBA	121	1367.0
TITUS, J.	CS	TCBA	110	1230.2
BEAUMONT, G.	MI	TCBA	94	1180.0
MILAN, C.	ME	TCBA	92	961.0
GANLEY, B.	GW	TCBA	79	1382.2
THOMAS, R.	LI	TCBA	77	939.0
DONLIN, M.	BU	TCBA	73	1319.0
MITCHELL, M.	WA	TCBA	71	1277.2
KEELER, W.	LT	TCBA	68	778.1

2 players tied at 66



A close-up photograph of a baseball, showing its characteristic red stitching on a white leather surface. The baseball is centered in the background. Overlaid on the baseball is the text 'BASEBALL' in blue, blocky, outlined letters, and 'PLAYOFFS' in red, blocky, outlined letters below it. The text is slightly blurred, suggesting a shallow depth of field.

BASEBALL
PLAYOFFS

1909

SEMI

FINAL

U-TCB909 - Mimosa Mirthmakers - Game Summaries

4 Games Played

Date	No.	Team	R	H	E	G Sc	Starters	Decisions	Save	
09/29/08	4	Mimosa Mirthmakers	3	8	1	60	S. LEEVER	W, L. RICHIE	E. REULBACH	
18:55m	4	Bergen Barflies	0	6	2	67	T. BROWN	L, T. BROWN		
Date	No.	Team	R	H	E	G Sc	Starters	Decisions	Save	
09/28/08	3	Mimosa Mirthmakers	1	7	0	83	J. POWELL	W, J. POWELL	None	
10:58m	3	Bergen Barflies	0	3	2	67	E. SUMMERS	L, E. SUMMERS		
Date	No.	Team	R	H	E	G Sc	Starters	Decisions	Save	
09/26/08	2	Bergen Barflies	0	2	1	48	H. HOWELL	L, H. HOWELL		
14:20m	2	Mimosa Mirthmakers	6	11	1	88	E. REULBACH	W, E. REULBACH	None	
Date	No.	Team	R	H	E	Inn	G Sc	Starters	Decisions	Save
09/25/08	1	Bergen Barflies	2	5	2	11	84	T. BROWN	L, T. BROWN	
19:23m	1	Mimosa Mirthmakers	3	5	1		64	C. CHECH	W, N. ALTROCK	None



U-TCB909 - Buffalo Mules - Game Summaries

5 Games Played

Date	No.	Team	R	H	E	Inn	G Sc	Starters	Decisions	Save
09/30/08	5	South Starrucca Ainspans	4	11	0	10	39	L. HUGHES	L, J. MCGINNITY	
24:59m	5	Buffalo Mules	5	12	1		52	B. SPADE	W, G. LIEBHARDT	None
Date	No.	Team	R	H	E	G Sc	Starters	Decisions	Save	
09/29/08	4	South Starrucca Ainspans	3	9	0	69	K. WILHELM	W, K. WILHELM	J. MCGINNITY	
17:03m	4	Buffalo Mules	2	4	0	57	B. RAYMOND	L, B. RAYMOND		
Date	No.	Team	R	H	E	G Sc	Starters	Decisions	Save	
09/28/08	3	South Starrucca Ainspans	2	6	1	42	B. RHOADS	L, B. RHOADS		
18:32m	3	Buffalo Mules	4	10	2	41	A. COAKLEY	W, G. LIEBHARDT	None	
Date	No.	Team	R	H	E	G Sc	Starters	Decisions	Save	
09/26/08	2	Buffalo Mules	9	16	0	45	C. BENDER	W, C. BENDER	None	
29:35m	2	South Starrucca Ainspans	4	10	1	38	L. HUGHES	L, C. FALKENBERG		
Date	No.	Team	R	H	E	G Sc	Starters	Decisions	Save	
09/25/08	1	Buffalo Mules	2	8	4	91	B. RAYMOND	W, B. RAYMOND	None	
19:33m	1	South Starrucca Ainspans	0	1	2	43	K. WILHELM	L, K. WILHELM		





U-TCB909 - TCBA Origins 1908 MLB Semi Finals - Club Batting



4 Teams	AVG	OBP	SLG	G	AB	H	2B	3B	HR	R	R/G	SO	BB	LOB	SB	CS	SB
Buffalo Mules	.282	.363	.384	5	177	50	14	2	0	22	4.4	11	20	45	0	1	
Mimosa Mirthmakers	.225	.268	.304	4	138	31	0	4	1	13	3.3	17	8	27	3	2	60
South Starrucca Ainspans	.222	.273	.251	5	167	37	3	1	0	13	2.6	16	13	36	7	0	100
Bergen Barflies	.127	.173	.167	4	126	16	2	0	1	2	.5	16	7	19	2	1	66
TCBA Origins 1908 MLB Semi Finals	.220	.279	.285	9	608	134	19	7	2	50	5.6	60	48	127	12	4	75

U-TCB909 - TCBA Origins 1908 MLB Semi Finals - Club Pitching



4 Teams	ERA	G	CG	SHO	QS	SV	IP	H	R	ER	HR	SO	BB	HB	WP	BK	OBA
Mimosa Mirthmakers	.24	4	2	2	3	1	38.0	16	2	1	1	16	7	0	2	0	.127
Buffalo Mules	2.35	5	2	1	2	0	46.0	37	13	12	0	16	13	0	1	0	.222
Bergen Barflies	2.45	4	2	0	3	0	36.2	31	13	10	1	17	8	1	1	0	.225
South Starrucca Ainspans	3.83	5	0	0	1	1	44.2	50	22	19	0	11	20	3	1	0	.282
TCBA Origins 1908 MLB Semi Finals	2.29	9	6	3	9	2	165.1	134	50	42	2	60	48	4	5	0	.220

4 Teams	FLD	G	PO	A	E	DP	TP	PB	OSB	OCS	OSBP	OSBA	DER	UER	UERP
Mimosa Mirthmakers	.982	4	114	49	3	2	0	0	2	1	66.7	.474	.846	1	50.0
South Starrucca Ainspans	.981	5	134	70	4	3	0	0	0	1	.0	.000	.682	3	13.6
Buffalo Mules	.966	5	138	60	7	4	0	0	7	0	100.0	1.370	.733	1	7.7
Bergen Barflies	.957	4	110	45	7	3	0	1	3	2	60.0	.736	.712	3	23.1
TCBA Origins 1908 MLB Semi Finals	.972	9	496	224	21	12	0	1	12	4	75.0	.653	.736	8	16.0

1909



The Buffalo Mules and Mimosa Mirthmakers meet in the Origins playoffs for the second consecutive year. Last year it was in the semi-finals. This year it's the World Series. Last year Buffalo recovered from a 2-1 deficit to win the semi-final matchup in 6 games. This year Mimosa hopes for revenge.

The two teams finished 1-2 in the league offensively with near identical slash lines. Buffalo had the regular season edge in fielding and Mimosa the edge in pitching.

The series opens in Mimosa.



ERIE COUNTY
COVID-19
VACCINE
POP-UP
CLINIC

DOSES & Mimosas



11 AM
TO 3 PM

Sunday JUNE 13TH

SPONSORED BY
CHANDON
Garden
SPRITZ

COMPLIMENTARY MIMOSA
WITH EVERY VACCINATION

3 CONVENIENT *Elmwood* LOCATIONS...

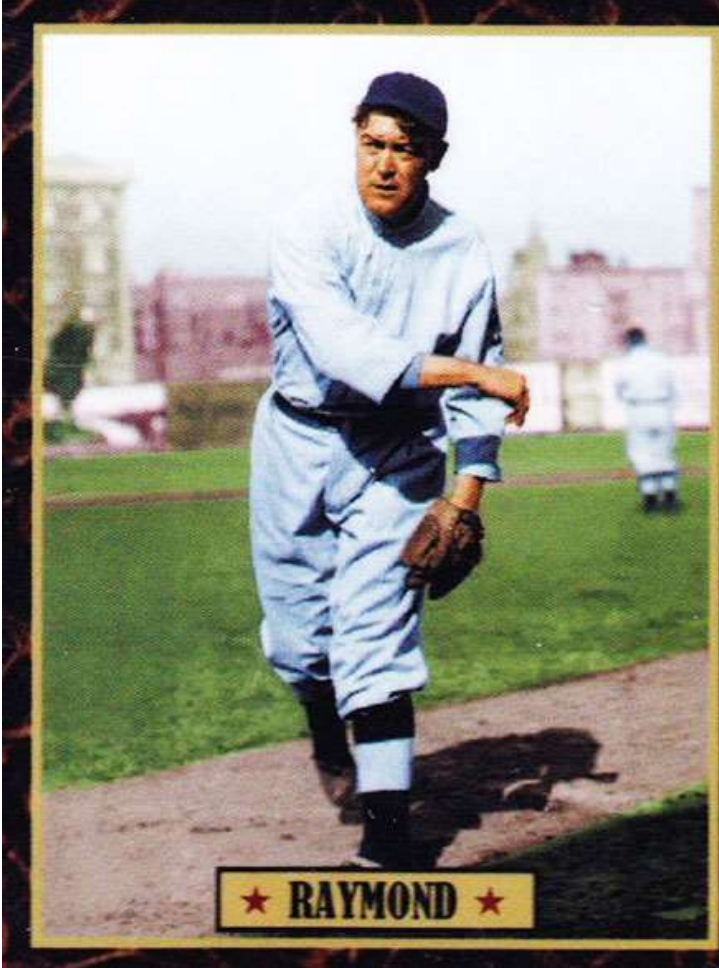
FORTY THIEVES 727 ELMWOOD AVE.	SAVOY 149 ELMWOOD AVE. Buffalo, NY	MR. GOODBAR 1110 ELMWOOD AVE.
--	---	---

Game 1 - Raymond (17-18, 2.36) for Buffalo vs. Reulbach (19-18, 2.02) for Mimosa

Sherry MaGee opens the game by hitting a grounder which Germany Schaeffer can't handle. After a hit-and-run single puts runners on the corners, Ty Cobb grounds into a double play to score the first run of the series. The Mules lead is short lived as Claude Rossman doubles home a Mirthmaker run in the home half of the 1st. In the bottom of the 4th, Mimosa takes a 2-1 lead when Schaefer doubles home Fred Clarke. Buffalo responds by turning a pair of walks, a hit batter and 2 singles into 3 runs and a 4-2 lead. Aided by a Mimosa error in each inning, the Mules add single runs in the 7th, 8th and 9th to coast to a 7-2 win in the series opener.

Mike Donlin goes 3 for 5 with 2 RBIs to lead Buffalo. Mimosa commits 6 errors for the game, including a trio by SS Charley O'Leary.

BU: 7 runs, 8 hits, 0 errors, Raymond (W)
MI: 2 runs, 4 hits, 6 errors, Reulbach (L)



Game 2 - Bender (10-8, 2.48) for Buffalo vs. Chech for Mimosa (15-7, 1.83)

After his fielding lapses in game 1, O'Leary is benched (and not seen for the remainder of the series) and is replaced in the infield by Tex Smith.

Bender holds Mimosa scoreless for the first 6 innings. Chech matches him, with help of a Mule being nailed at the plate attempting to score on a double. In the bottom of the 7th, Rossman singles and Clarke triples him home with nobody out. And then ...

*G. BEAUMONT facing C. BENDER, B 7th, No Outs, Runner on 3rd, Ahead 1-0
...and CLARKE's stealing home! ... here's the pitch ... high and outside ... and he's
oh!...SMITH took a hard hit ... but held on...OUT! ... that's one!
and they just sold the insurance policy ... with no outs, that might have been a missed sign.*

I'm not sure what happened. I did not signal for Clarke to try to steal home with nobody out. So, it's 1-0 Mimosa through 7.

In the bottom of the 8th ...

*L. Smith facing C. BENDER, B 8th, No Outs, Bases Empty, Ahead 1-0
BENDER winds up ... well hit drive ... deep to left field ... carrying ... it's long gone!
Mules 0, Mirthmakers 2*

Tex hits the first homer of the World Series!

Buffalo opens the 9th with an infield hit and follows with a hit-and-run single to put runners on the corners with nobody out. Cobb flies out and Amby McConnell pops out. With 2 outs and the tying run on 1st ...

J. GANZEL facing C. CHECH, T 9th, 2 Outs, 1st and 3rd, Behind 0-2

*Speedy MAGEE edging down the line ... the pitch to GANZEL ... chopper in front of the plate
STEPHENS charges out ... and he boots it! ... MAGEE's headed home ... he'll score
no play anywhere ... DONLIN hustles over to third ... and GANZEL's on at first
score that an error on STEPHENS ... and that's the 2nd error for the Mirthmakers
Mules 1, Mirthmakers 2*

That's the eighth error for Mimosa and game 2 is not even finished!

Check gets No No Katon to ground to Tex at 3B, and Tex is able to field the ball cleanly and make an accurate throw to 1B, and Rossman is able to hold the ball for the final out. The series is even at 1-1.

BU: 1 run, 4 hits, 0 errors, Bender (L)

MI: 2 runs, 5 hits, 2 errors, Check (W)

Correspondent: Larry Smith

GAME 2

Game 3 - Powell (26-6, 1.83) for Mimosa vs. Coakley (21-7, 2.29) for Buffalo

The series moves to Buffalo.

The Mules jump out to a 3-0 lead, with 1 run in the 2nd and 2 runs in the 4th. Tex Smith leads off the top of the 6th with his second homer of the series. Hartsell bats for Powell and triples, and then scores on a sacrifice fly to cut the lead to 1 run. In the 7th, Clarke goes deep and the game is tied 3-3. In the 8th, the Mirthmakers get 2 singles to put runners at 1st and 2nd with 2 outs. Claude Ritchey, looking for his first hit of the series, faces Coakley. The call ...

C. RITCHEY facing A. COAKLEY, T 8th, 2 Outs, 1st and 2nd, Tied 3-3

*The runners take their lead ... the pitch to RITCHEY ... ground ball to Katon ... he's up with it the long throw to first ... and he fires it right by GILL ... ANDERSON scores easily GESSLER's around second ... he'll make third ... and RITCHEY has to settle for one as the ball is returned to the infield ... he never made the turn ... Katon picks up an error
Mirthmakers 4, Mules 3*

That's the first error of the series for the Mules and it proves costly as Lew Richie holds Buffalo scoreless over the final 2 innings.

The Mirthmakers lead the series 2-1 (the same lead as they had over Buffalo in the semi-finals last season). Mimosa now has 10 errors over 3 games.

MI: 4 runs, 6 hits, 2 errors, Leever (W), Ritchie (S)

BU: 3 runs, 7 hits, 1 error, Coakley (L)

Game 4 - Reulbach for Mimosa vs. Raymond for Buffalo

The game 1 starting pitchers are back on the mound. Game 1 winner Raymond struggles in the top of the 1st. With 2 outs and a runner on 2nd, he walks Clarke and then hits Ginger Beaumont to load the bases. Schaeffer singles home 2 runs for a quick 2-0 Mimosa lead. Buffalo cuts the lead in half when Cobb, for the second time in the series, grounds into a double play with runners on the corners with nobody out. The lead holds until the 5th when the Mules use a hit batter and 2 singles to tie the score 2-2. Buffalo puts runners on the corner with 1 out in the 8th (1 runner via another Mirthmaker error) with only 1 out. Mimosa keeps it 2-2 with an inning-ending double play.

Sid Smith opens the 9th by reaching on yet another Mirthmaker error. Raymond bats for himself and fouls off 2 attempts to sacrifice. On the next pitch ...

*B. RAYMOND facing E. REULBACH, B 9th, No Outs, Runner on 1st, Tied 2-2
Infield playing in a few paces ... the two-strike pitch ... this one is hit ... it may carry
a long run for CLARKE ... if it's fair it's trouble ... and it drops a foot inside the line
SMITH rounds third
TRY TO SCORE? (1=yes, 2=no*)
the throw comes in to SCHAEFER ... they're holding SMITH at third
and RAYMOND's in standing with a double ... so fasten your seat belts once again
the winning run is now on third base ... for RAYMOND, his 1st double of the series
for Bugs RAYMOND, his 1st hit of the series*

And then,

*S. MAGEE facing E. REULBACH, B 9th, No Outs, 2nd and 3rd, Tied 2-2
They're playing him in ... the runners take their lead ... now he comes home with it
bounced up the middle ... RITCHEY's racing over ... tipped off his glove ... it's all over!
SMITH will score
Mirthmakers 2, Mules 3*

The series is tied 2-2. Mimosa has now committed 14 errors!

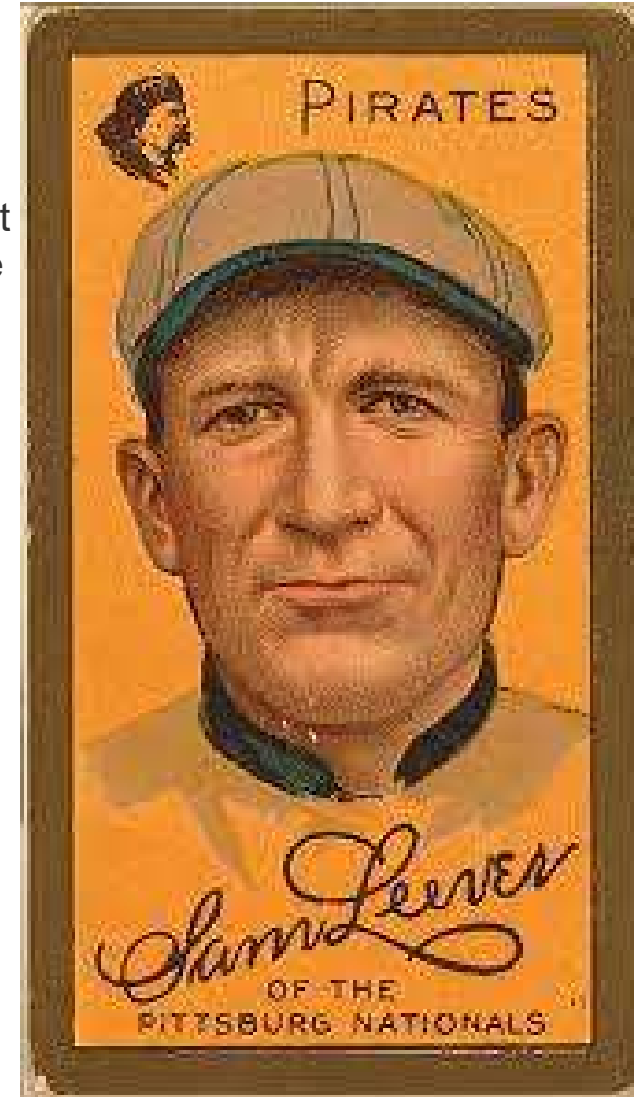
MI: 2 runs, 3 hits, 4 errors, Reulbach (L)
BU: 3 runs, 7 hits, 1 error, Raymond (W)



Game 5 - Leever (16-8, 2.05) for Mimosa vs. Liebhardt (16-12, 2.93) for Buffalo

For the third time in the series, Mimosa scores in the 1st: Liebhardt hits Ritchey, Rossman doubles and Clarke scores Ritchey on a groundball to short. The Mirthmakers add single runs in the 3rd, 4th and 8th. Sam Leever cruises to a 2-hit complete game shutout. That extend's Leever's scoreless inning streak to 11 in the series and 20 in the playoffs.

MI: 4 runs, 7 hits, 0 errors, Leever (W)
BU: 0 runs, 2 hits, 1 error, Liebhardt (L)



Game 6 - Bender for Buffalo vs. Check for Mimosa

The series returns to Mimosa.

The Mirthmakers again score in the 1st to take a 1-0 lead on another Rossman double. A Donlin double scores Cobb in the 3rd to tie the game at 1-1. In the bottom of the 3rd, a singles by Clarke and Beaumont give Mimosa a 3-1 lead. Buffalo trims the lead to 3-2 on a Cobb RBI single in the 5th, but lose an opportunity for more by leaving the bases loaded.

Buffalo leaves runners in scoring position in the 6th and 7th and lose a runner on a double play in the 8th. In the 9th, Check retires the first 2 batters and then ...

T. COBB facing C. CHECH, T 9th, 2 Outs, Bases Empty, Behind 2-3

CHECH comes to him ... can't find the strike zone ... that's ball four ... and COBB coaxes a walk and that puts the tying run on at first

**M. DONLIN facing C. CHECH, T 9th, 2 Outs, Runner on 1st, Behind 2-3*

Space on the right ... COBB leading off ... there goes COBB ... DONLIN goes the opposite way grounded deep into the hole ... left side ... nobody there ... base hit

SCHAEFER was over to cover second ... and he poked it right through the hole

COBB hustles in to third ... and DONLIN collects a lovely single ... a textbook hit-and-run

**S. MAGEE facing C. CHECH, T 9th, 2 Outs, 1st and 3rd, Behind 2-3
The runners take their lead ... the pitch ... easy bouncer to RITCHEY ... he fields it
over to SCHAEFER covering second ... for out number three*

FINAL SCORE : Mules 2, Mirthmakers 3

BU: 2 runs, 9 hits, 1 error, Bender (L)
MI: 3 runs, 5 hits, 0 errors, Chech (W)

Mimosa gets its revenge, reversing the results of the semi-final matchup of last year. It was an abysmal offensive performance by both teams. The Mirthmakers managed only 17 runs and 30 hits over the 6 games, with a series batting average of .166. Fortunately for the Mirthies 12 of the 30 hits were for extra bases. Buffalo scored 16 runs on 37 hits, batted .189 and left 40 runners on base. Mimosa's defense was just as bad with 14 errors. On the plus-performance side, Mirthmaker pitchers allowed only 9 earned runs and combined for a 1.53 ERA for the series. Mule pitchers combined for a 2.42 ERA.

Congratulations to Aaron for an outstanding season!

Correspondent: Larry Smith





6 Games Played

Date	No.	Team	R	H	E	G Sc	Starters	Decisions	Save
10/12/08	6	Buffalo Mules	2	9	1	65	C. BENDER	L, C. BENDER	
11:53m	6	Mimosa Mirthmakers	3	5	0	61	C. CHECH	W, C. CHECH	None
Date	No.	Team	R	H	E	G Sc	Starters	Decisions	Save
10/10/08	5	Mimosa Mirthmakers	4	7	0	86	S. LEEVER	W, S. LEEVER	None
10:24m	5	Buffalo Mules	0	2	1	61	G. LIEBHARDT	L, G. LIEBHARDT	
Date	No.	Team	R	H	E	G Sc	Starters	Decisions	Save
10/09/08	4	Mimosa Mirthmakers	2	3	4	57	E. REULBACH	L, E. REULBACH	
12:23m	4	Buffalo Mules	3	7	1	71	B. RAYMOND	W, B. RAYMOND	None
Date	No.	Team	R	H	E	G Sc	Starters	Decisions	Save
10/08/08	3	Mimosa Mirthmakers	4	6	2	45	J. POWELL	W, S. LEEVER	L. RICHIE
14:34m	3	Buffalo Mules	3	7	1	61	A. COAKLEY	L, A. COAKLEY	
Date	No.	Team	R	H	E	G Sc	Starters	Decisions	Save
10/06/08	2	Buffalo Mules	1	4	0	65	C. BENDER	L, C. BENDER	
11:43m	2	Mimosa Mirthmakers	2	5	2	77	C. CHECH	W, C. CHECH	None
Date	No.	Team	R	H	E	G Sc	Starters	Decisions	Save
10/05/08	1	Buffalo Mules	7	8	0	72	B. RAYMOND	W, B. RAYMOND	None
14:09m	1	Mimosa Mirthmakers	2	4	6	51	E. REULBACH	L, E. REULBACH	

MI	TCBA	Inn	1	2	3	4	5	6	7	8	9	Ext	R	RC	Early	Middle	Late
		Runs	5	0	3	2	0	2	2	3	0	0	17	12.4	8	4	5
		Pct	29	0	18	12	0	12	12	18	0	0		136.8	47	24	29
		OppR	1	1	2	2	5	0	1	1	3	0	16		4	7	5
		Pct	6	6	13	13	31	0	6	6	19	0			25	44	31
BU	TCBA	Inn	1	2	3	4	5	6	7	8	9	Ext	R	RC	Early	Middle	Late
		Runs	1	1	2	2	5	0	1	1	3	0	16	11.3	4	7	5
		Pct	6	6	13	13	31	0	6	6	19	0		141.3	25	44	31
		OppR	5	0	3	2	0	2	2	3	0	0	17		8	4	5
		Pct	29	0	18	12	0	12	12	18	0	0			47	24	29
Tot	Org	Inn	1	2	3	4	5	6	7	8	9	Ext	R	RC	Early	Middle	Late
		Runs	6	1	5	4	5	2	3	4	3	0	33	23.8	12	11	10
		Pct	18	3	15	12	15	6	9	12	9	0		138.8	36	33	30



U-TCB909 - TCBA Origins 1908 MLB World Series - Club Batting

2 Teams	AVG	OBP	SLG	G	AB	H	2B	3B	HR	R	R/G	SO	BB	LOB	SB	CS	SBP
Buffalo Mules	.189	.257	.230	6	196	37	6	1	0	16	2.7	14	13	40	1	1	50.0
Mimosa Mirthmakers	.166	.236	.276	6	181	30	7	2	3	17	2.8	23	15	27	2	1	66.7
TCBA Origins 1908 MLB World Series	.178	.247	.252	6	377	67	13	3	3	33	5.5	37	28	67	3	2	60.0

U-TCB909 - TCBA Origins 1908 MLB World Series - Club Pitching

2 Teams	ERA	G	CG	SHO	QS	SV	IP	H	R	ER	HR	SO	BB	HB	WP	BK	OBA
Mimosa Mirthmakers	1.53	6	4	1	4	1	53.0	37	16	9	0	14	13	5	0	0	.189
Buffalo Mules	2.42	6	5	0	4	0	52.0	30	17	14	3	23	15	2	0	0	.166
TCBA Origins 1908 MLB World Series	1.97	6	9	1	8	1	105.0	67	33	23	3	37	28	7	0	0	.178

U-TCB909 - TCBA Origins 1908 MLB World Series - Club Fielding

2 Teams	FLD	G	PO	A	E	DP	TP	PB	OSB	OCS	OSBP	OSBA	DER	UER	UERP
Buffalo Mules	.982	6	156	64	4	3	0	0	2	1	66.7	.346	.810	3	17.6
Mimosa Mirthmakers	.946	6	159	88	14	6	0	0	1	1	50.0	.170	.741	7	43.8
TCBA Origins 1908 MLB World Series	.963	6	315	152	18	9	0	0	3	2	60.0	.257	.773	10	30.3



The background of the slide is a photograph of an ancient Egyptian wall. It features several horizontal registers of hieroglyphs and pictorial reliefs. The top register shows a row of hieroglyphs. Below it, there are registers with various scenes, including what appears to be a seated figure on the left and several standing figures in the center and right. The reliefs are carved into a light-colored stone surface.

TCBA ORIGINS 1902 – 1909
(proposed through 1920)

1900s



- 1902 – Turin Mountaineers**
- 1903 – Cleveland Naps**
- 1904 – Long Island Islanders**
- 1905 – Long Island Islanders**
- 1906 – Long Island Islanders**
- 1907 – Cleveland Naps**
- 1908 – Long Island Islanders**
- 1909 – Mimosa Mirthmakers**



	W	L	PCT	GB	Mg #	STRK	Last 10	Home	Away	1 Run	X-Inn	TCBA DON	TCBA STU	TCBA BILL
TCBA Origins 1902														
Mahley Division														
Boston Beaneaters	100	55	.645	-	X	W 1	7- 3	52-25	48-30	16-19	9- 2	35-20	26-10	19-13
Hyde Park Vitamen	99	56	.639	1.0	-	L 1	8- 2	54-24	45-32	18-20	7- 8	36-19	25-11	20-12
Long Island Islanders	62	92	.403	37.5	-	L 5	2- 8	27-50	35-42	19-19	1- 8	25-29	14-22	11-21
South Starrucca Ainspans	35	119	.227	64.5	-	W 1	3- 7	15-62	20-57	10-18	5-10	13-41	9-27	6-26
McCorkindale Division														
Bradenton Buckeyes	114	40	.740	-	X	W 3	8- 2	61-16	53-24	21-14	9- 6	24-12	43-11	24- 8
Bergen Barflies	67	87	.435	47.0	-	L 3	5- 5	30-47	37-40	18-24	8- 3	18-18	23-31	16-16
Mexicali Mallards	66	88	.429	48.0	-	W 2	6- 4	32-45	34-43	20-18	3-10	17-19	24-30	13-19
Cleveland Naps	47	107	.305	67.0	-	L 2	1- 9	28-49	19-58	19-21	5- 9	11-25	18-36	9-23
Kirwin Division														
Mimosa Mirthmakers	95	59	.617	-	X	W 5	8- 2	47-30	48-29	19-15	3- 5	17-15	23- 9	36-18
Grand Rapids Wolverines	92	62	.597	3.0	-	L 2	6- 4	43-34	49-28	17- 9	4- 1	21-11	21-11	30-24
Newton Buccs	63	91	.409	32.0	-	L 9	1- 9	27-50	36-41	17-18	8- 4	20-12	10-22	20-34
Waukesha Freeman	59	95	.383	36.0	-	W 2	5- 5	31-46	28-49	15-20	5- 9	14-18	12-20	22-32
Seitz Division														
Turin Mountaineers	96	59	.619	-	X	W 1	5- 5	46-31	50-28	24-19	14- 5	20-12	23- 9	23-13
Wilderness Wraiths	95	60	.613	1.0	-	L 2	7- 3	48-30	47-30	24-13	12- 7	20-12	20-12	21-15
Hereford Highlanders	78	76	.506	17.5	-	W 1	5- 5	37-40	41-36	18-22	6- 8	12-20	18-14	22-14
Buffalo Mules	66	88	.429	29.5	-	W 1	3- 7	29-48	37-40	14-20	3- 7	19-13	13-19	15-21

Our initial season was quite a success. Boston and Turin had to win 1-game playoffs against Hyde Park and Wilderness to advance to the playoffs. Turin then defeated Boston in the first round of the playoffs, winning 4 of the first 5 games. Bradenton also defeated Mimosa in five games. In the World Series, Turin overcame a 3-0 deficit in games, and a 6-0 lead in the 4th game to defeat the Buckeyes in seven games.

U-TCB903 - TCBA Origins 1902 MLB - Standings on Sep. 23, 1902

	W	L	PCT	GB	Mg #	STRK	Last 10	Home	Away	1 Run	X-Inn	TCBA DON	TCBA STU	TCBA BILL
TCBA Origins 1902 MLB														
Don Mahley Division														
Hyde Park Vitamen	77	77	.500	-	X	L 2	7- 3	39-38	38-39	16-24	7- 8	30-24	14-18	15-17
South Starrucca Ainspans	74	80	.481	3.0	-	L 4	4- 6	39-38	35-42	18-25	7-11	27-27	12-20	14-18
Boston Beaneaters	68	86	.442	9.0	-	W 2	5- 5	30-47	38-39	18-26	6-10	29-25	12-20	13-19
Long Island Islanders	64	90	.416	13.0	-	W 4	4- 6	27-50	37-40	14-27	1-11	22-32	11-21	16-16
Stu McCorkindale Division														
Cleveland Naps	100	52	.658	-	X	L 3	5- 5	52-24	48-28	30-10	15- 6	19-13	35-17	27- 9
Mexicali Mallards	89	65	.578	12.0	-	L 1	6- 4	49-28	40-37	23-18	8- 6	25- 7	28-26	19-17
Bradenton Buckeyes	72	81	.471	28.5	-	W 3	6- 4	32-45	40-36	22-14	5- 3	17-15	27-26	16-20
Bergen Barflies	67	86	.438	33.5	-	W 1	3- 7	33-43	34-43	18-22	6- 5	18-14	16-37	17-19
Bill Kirwin Division														
Newton Buccs	100	54	.649	-	X	W 4	9- 1	45-32	55-22	31-11	8- 5	20-12	22-14	39-15
Grand Rapids Wolverines	70	84	.455	30.0	-	L 4	2- 8	31-46	39-38	18-20	5- 7	14-18	17-19	25-29
Mimosa Mirthmakers	70	84	.455	30.0	-	W 1	5- 5	36-41	34-43	22-23	6- 9	17-15	14-22	21-33
Waukesha Freeman	68	86	.442	32.0	-	L 1	4- 6	32-45	36-41	19-26	6- 3	19-13	12-24	23-31
Richard Seitz Division														
Turin Mountaineers	91	63	.591	-	X	L 3	4- 6	46-31	45-32	18-14	5- 3	20-16	18-14	21-11
Hereford Highlanders	78	76	.506	13.0	-	W 3	7- 3	34-43	44-33	22-27	9- 4	19-17	15-17	13-19
Wilderness Wraiths	75	79	.487	16.0	-	W 2	5- 5	37-40	38-39	21-24	8- 8	18-18	15-17	16-16
Buffalo Mules	67	87	.435	24.0	-	L 2	4- 6	31-46	36-41	27-26	8-11	19-17	16-16	13-19

Defending champion Turin was the only team to return to the playoffs. 100-game winner Cleveland defeated .500 Hyde Park in 5 games in the first round. Turin returned to the World Series, defeating 100-game winning Newton in six games, but lost to new champion Cleveland in a five game final showdown.

	W	L	PCT	GB	Mg #	STRK	Last 10	Home	Away	1 Run	X-Inn	TCBA DON	TCBA STU	TCBA BILL
TCBA Origins 1903 MLB														
Mahley Division														
Long Island Islanders	108	44	.711	-	X	W 2	8- 2	55-22	53-22	27-19	13- 5	39-13	21-11	29- 7
South Starrucca Ainspans	94	59	.614	14.5	-	L 2	5- 5	47-29	47-30	23-16	6- 7	30-23	21-11	22-14
Hyde Park Vitamen	75	78	.490	33.5	-	L 1	4- 6	40-36	35-42	29-21	5- 7	23-30	18-14	14-22
Boston Beaneaters	51	103	.331	58.0	-	W 1	4- 6	23-54	28-49	16-19	5- 6	14-40	13-19	12-24
McCorkindale Division														
Mexicali Mallards	95	59	.617	-	X	W 1	6- 4	52-25	43-34	28-21	7- 5	16-16	38-16	17-15
Cleveland Naps	86	68	.558	9.0	-	L 1	8- 2	42-35	44-33	22-16	6- 1	15-17	28-26	23- 9
Bradenton Buckeyes	73	81	.474	22.0	-	W 1	3- 7	38-39	35-42	18-23	4- 5	15-17	26-28	17-15
Bergen Barflies	56	98	.364	39.0	-	L 1	3- 7	27-50	29-48	16-27	5- 8	9-23	16-38	15-17
Kirwin Division														
Newton Buccs	91	63	.591	-	X	L 4	5- 5	45-32	46-31	20-24	10-10	20-16	18-14	34-20
Mimosa Mirthmakers	81	73	.526	10.0	-	W 4	6- 4	42-35	39-38	22-19	6- 8	19-17	14-18	31-23
Grand Rapids Wolverines	67	87	.435	24.0	-	L 1	4- 6	36-41	31-46	19-19	4- 8	14-22	13-19	23-31
Waukesha Freeman	59	95	.383	32.0	-	W 1	5- 5	31-46	28-49	17-33	10-10	14-22	11-21	20-34
Seitz Division														
Hereford Highlanders	84	70	.545	-	X	W 1	6- 4	46-31	38-39	23-17	4- 5	16-16	20-16	20-12
Turin Mountaineers	82	72	.532	2.0	-	W 4	6- 4	44-33	38-39	21-20	11- 8	20-12	16-20	14-18
Wilderness Wraiths	74	80	.481	10.0	-	L 1	6- 4	42-35	32-45	23-22	7- 5	12-20	20-16	17-15
Buffalo Mules	54	100	.351	30.0	-	L 4	2- 8	27-50	27-50	17-25	4- 9	8-24	13-23	10-22

Newton was our only returning playoff contestant, joined by 108-game winning Long Island, Mexicali and Hereford. The Islanders defeated the Highlanders in six games, and the Mallards defeated the Buccs in six games, winning the final, 1-0, in the 10th inning. Long Island prevailed in the World Series, with a walk-off win in the 13th inning of the sixth game.

	W	L	PCT	GB	Mg #	STRK	Last 10	Home	Away	1 Run	X-Inn	TCBA DON	TCBA STU	TCBA BILL
TCBA Origins														
Mahley Division														
Long Island Islanders	101	53	.656	-	X	W 5	7- 3	55-22	46-31	29-27	11- 6	38-16	16-16	23-13
South Starrucca Ainspans	91	63	.591	10.0	-	L 1	5- 5	47-30	44-33	26-19	6- 9	31-23	14-18	24-12
Boston Beaneaters	74	80	.481	27.0	-	W 1	7- 3	39-38	35-42	22-28	8- 8	20-34	10-22	27- 9
Hyde Park Vitamen	64	90	.416	37.0	-	L 7	1- 9	31-46	33-44	21-26	8-10	19-35	8-24	23-13
McCorkindale Division														
Bradenton Buckeyes	97	57	.630	-	X	L 2	6- 4	42-35	55-22	28-15	10- 6	20-12	28-26	23- 9
Bergen Barflies	91	62	.595	5.5	-	W 1	8- 2	45-31	46-31	22-26	7-10	18-14	30-24	23- 8
Mexicali Mallards	89	64	.582	7.5	-	L 1	3- 7	46-30	43-34	33-30	14- 7	22-10	26-28	19-12
Cleveland Naps	84	70	.545	13.0	-	W 2	3- 7	39-38	45-32	24-23	13-10	20-12	24-30	18-14
Kirwin Division														
Newton Buccs	88	65	.575	-	X	W 1	7- 3	45-32	43-33	24-20	8- 7	18-18	14-17	32-22
Waukesha Freeman	74	80	.481	14.5	-	W 2	5- 5	37-40	37-40	27-21	11- 7	12-24	11-21	29-25
Grand Rapids Wolverines	58	96	.377	30.5	-	L 1	4- 6	31-46	27-50	18-26	6-10	9-27	8-24	26-28
Mimosa Mirthmakers	52	101	.340	36.0	-	L 2	4- 6	26-51	26-50	15-21	5- 7	8-28	10-21	21-33
Seitz Division														
Turin Mountaineers	88	66	.571	-	X	L 2	4- 6	47-30	41-36	28-18	7- 8	19-13	15-21	15-17
Wilderness Wraiths	78	76	.506	10.0	-	W 2	8- 2	47-30	31-46	25-26	8-10	13-19	17-19	17-15
Hereford Highlanders	66	88	.429	22.0	-	W 6	7- 3	30-47	36-41	18-25	7- 9	12-20	15-21	11-21
Buffalo Mules	35	119	.227	53.0	-	L 6	1- 9	15-62	20-57	15-24	4- 9	7-25	7-29	11-21

Defending champion Long Island and Newton returned to the playoffs, joined by Bradenton and Turin. Bradenton avenged their 1902 World Series loss by defeating Turin in 5 games while Long Island triumphed over Newton in 6 games. The Islanders repeated as Champions with six-game win in the World Series.

	W	L	PCT	GB	Mg #	STRK	Last 10	Home	Away	1 Run	X-Inn	TCBA DON	TCBA STU	TCBA BILL
TCBA Origins 1905 MLB														
Mahley Division														
Long Island Islanders	103	51	.669	-	X	L 1	6- 4	49-28	54-23	26-20	7- 5	33-21	21-11	22-10
South Starrucca Ainspans	79	75	.513	24.0	-	W 1	3- 7	42-35	37-40	33-24	11- 6	32-22	19-13	15-17
Hyde Park Vitamen	74	80	.481	29.0	-	W 1	5- 5	40-37	34-43	17-24	4- 6	18-36	18-14	16-16
Boston Beaneaters	72	81	.471	30.5	-	L 1	6- 4	40-37	32-44	29-23	8-10	25-29	17-15	17-14
McCorkindale Division														
Bergen Barflies	93	59	.612	-	X	L 1	7- 3	54-22	39-37	25-23	7- 5	17-15	37-15	21-15
Bradenton Buckeyes	71	83	.461	23.0	-	L 1	5- 5	40-37	31-46	23-34	7- 5	12-20	24-30	19-17
Mexicali Mallards	60	92	.395	33.0	-	L 1	5- 5	33-43	27-49	24-18	4- 8	12-20	24-29	15-21
Cleveland Naps	56	97	.366	37.5	-	W 1	3- 7	29-48	27-49	18-22	7- 6	12-20	21-32	13-23
Kirwin Division														
Waukesha Freeman	93	61	.604	-	X	W 1	3- 7	47-30	46-31	26-21	9- 8	17-15	19-17	35-19
Pittsburgh Rebels	83	71	.539	10.0	-	L 1	7- 3	47-30	36-41	26-37	4-16	16-16	24-12	30-24
Mimosa Mirthmakers	77	76	.503	15.5	-	L 1	7- 3	39-37	38-39	25-22	5- 4	13-18	20-16	28-26
Grand Rapids Wolverines	53	101	.344	40.0	-	W 1	3- 7	28-49	25-52	17-30	9- 8	11-21	13-23	15-39
Seitz Division														
Hereford Highlanders	85	69	.552	-	X	W 3	8- 2	40-37	45-32	26-23	10- 4	21-15	21-11	15-17
Buffalo Mules	84	70	.545	1.0	-	L 2	5- 5	40-37	44-33	17-22	8- 8	19-17	15-17	18-14
Turin Mountaineers	78	75	.510	6.5	-	W 2	6- 4	38-38	40-37	31-18	8- 7	14-22	17-14	16-16
Wilderness Wraiths	67	87	.435	18.0	-	L 2	2- 8	32-45	35-42	21-23	6- 8	15-21	21-11	14-18

Two-time defending champion Long Island was the only returning playoff team. Hereford needed to win a rainout makeup game to qualify and were joined by Bergen and Waukesha. The Islanders eliminated Hereford in five games while Waukesha triumphed over Bergen in six games. Long Island won their third consecutive championship by defeating Waukesha in the World Series. Down 3 games to 1, the Freeman forced a 7th game, only to be shutout by a 4-0 count.

	W	L	PCT	GB	Mg #	STRK	Last 10	Home	Away	1 Run	X-Inn	TCBA DON	TCBA STU	TCBA BILL
TCBA Origins 1906 MLB														
Don Mahley Division														
Long Island Islanders	99	55	.643	-	X	W 5	8- 2	51-26	48-29	32-18	8- 7	35-19	18-14	18-14
Hyde Park Vitamen	96	58	.623	3.0	-	W 2	4- 6	51-26	45-32	34-24	15-11	30-24	21-11	21-11
Boston Beaneaters	95	58	.621	3.5	-	L 2	7- 3	49-28	46-30	26-22	8- 8	33-21	16-16	26- 5
South Starrucca Ainspans	51	103	.331	48.0	-	L 6	1- 9	24-53	27-50	19-29	7- 8	10-44	13-19	16-16
Stu McCorkindale Division														
Cleveland Naps	99	55	.643	-	X	W 2	5- 5	50-27	49-28	30-12	12- 8	22-10	30-24	23-13
Bergen Barflies	97	57	.630	2.0	-	W 2	6- 4	50-27	47-30	27-14	11- 4	16-16	34-20	22-14
Mexicali Mallards	75	79	.487	24.0	-	L 2	6- 4	38-39	37-40	24-25	13-10	12-20	25-29	21-15
Bradenton Buckeyes	58	95	.379	40.5	-	L 2	3- 7	28-49	30-46	15-21	7-10	10-22	19-35	14-21
Bill Kirwin Division														
Mimosa Mirthmakers	93	58	.616	-	X	L 1	3- 7	48-26	45-32	27-21	9- 4	17-14	21-14	36-17
Waukesha Freeman	85	69	.552	9.5	-	W 1	7- 3	49-28	36-41	17-22	5- 6	14-18	23-13	34-20
Grand Rapids Wolverines	46	107	.301	48.0	-	L 1	6- 4	22-55	24-52	12-27	2-10	11-21	9-27	19-34
Pittsburgh Rebels	44	110	.286	50.5	-	W 1	3- 7	24-53	20-57	13-30	3-14	4-28	10-26	18-36
Richard Seitz Division														
Buffalo Mules	89	65	.578	-	X	W 7	8- 2	50-27	39-38	18-20	9- 6	20-16	17-15	24- 8
Hereford Highlanders	87	67	.565	2.0	-	W 5	8- 2	45-32	42-35	20-26	8- 9	15-21	17-15	22-10
Wilderness Wraiths	72	82	.468	17.0	-	L 5	2- 8	35-42	37-40	26-21	11- 9	19-17	6-26	18-14
Turin Mountaineers	43	111	.279	46.0	-	L 7	2- 8	20-57	23-54	14-22	6-10	6-30	7-25	12-20

Three-time defending champion Long Island was the only returning playoff team, joined by Cleveland, Mimosa and Buffalo. The Islanders defeated Mimosa in 5 games. Cleveland won the Lake Erie semi-final by defeating Buffalo in 5 games. Long Island held a 3-games to 2 lead in the World Series, but Cleveland won game six, 4-1 at home, setting up the 7th game, which would go 10 innings before the Naps prevailed, 2-1, breaking the Islander streak of championships.

	W	L	PCT	GB	Mg #	STRK	Last 10	Home	Away	1 Run	X-Inn	TCBA DON	TCBA STU	TCBA BILL	TCBA RICH
TCBA Origins 1907 MLB															
Don Mahley Division															
Long Island Islanders	92	62	.597	-	X	L 1	5- 5	47-30	45-32	25-27	11- 6	33-21	23-13	17-15	19-13
Hyde Park Vitamen	82	72	.532	10.0	-	W 1	3- 7	36-41	46-31	29-19	7- 7	30-24	17-19	13-19	22-10
Western Marvels	59	95	.383	33.0	-	W 4	6- 4	27-50	32-45	23-28	8- 9	21-33	17-19	10-22	11-21
South Starrucca Ainspans	58	96	.377	34.0	-	L 4	6- 4	25-52	33-44	24-21	10- 5	24-30	11-25	12-20	11-21
Stu McCorkindale Division															
Cleveland Naps	90	63	.588	-	X	L 1	9- 1	41-35	49-28	27-21	8- 8	20-16	39-14	12-20	19-13
Bradenton Buckeyes	88	66	.571	2.5	-	W 4	4- 6	37-40	51-26	22-20	12- 9	21-15	29-25	21-11	17-15
Bergen Barflies	79	74	.516	11.0	-	L 4	4- 6	43-34	36-40	24-22	8- 9	17-19	23-30	16-16	23- 9
Mexicali Mallards	64	90	.416	26.5	-	W 1	3- 7	33-44	31-46	25-27	13-15	18-18	16-38	12-20	18-14
Bill Kirwin Division															
Mimosa Mirthmakers	97	57	.630	-	X	W 6	7- 3	50-27	47-30	26-25	9- 8	23- 9	19-13	32-22	23-13
Waukesha Freeman	96	58	.623	1.0	-	W 4	7- 3	52-25	44-33	23-19	7- 5	23- 9	19-13	30-24	24-12
Grand Rapids Wolverines	94	60	.610	3.0	-	L 4	4- 6	49-28	45-32	25-18	6- 3	18-14	21-11	31-23	24-12
Pittsburgh Rebels	50	104	.325	47.0	-	L 5	2- 8	23-54	27-50	18-25	6-15	12-20	8-24	15-39	15-21
Richard Seitz Division															
Buffalo Mules	83	71	.539	-	X	W 5	8- 2	42-35	41-36	25-19	7- 9	19-13	15-17	14-22	35-19
Hereford Highlanders	81	73	.526	2.0	-	W 3	6- 4	47-30	34-43	23-20	6- 3	17-15	17-15	18-18	29-25
Turin Mountaineers	78	76	.506	5.0	-	L 3	6- 4	43-34	35-42	26-29	8- 4	15-17	13-19	18-18	32-22
London Tecumsehs	40	114	.260	43.0	-	L 10	0-10	23-54	17-60	18-43	1-12	14-18	6-26	8-28	12-42

All four Division champs returned from last year, but it was Long Island that prevailed, winning their FOURTH championship.

	W	L	PCT	GB	Mg #	STRK	Last 10	Home	Away	1 Run	X-Inn	TCBA DON	TCBA STU	TCBA BILL	TCBA RICH
TCBA Origins 1908 MLB															
Don Mahley Division															
South Starrucca Ainspans	98	56	.636	-	X	L 2	5-5	54-23	44-33	38-24	12-11	36-18	21-11	17-15	24-12
Cleveland Spiders	85	69	.552	13.0	-	W 2	6-4	52-25	33-44	40-20	17-8	35-19	16-16	17-15	17-19
Hyde Park Vitamen	49	105	.318	49.0	-	L 2	6-4	24-53	25-52	19-29	6-7	21-33	6-26	7-25	15-21
Long Island Islanders	37	117	.240	61.0	-	W 2	3-7	20-57	17-60	11-29	5-9	16-38	9-23	3-29	9-27
Stu McCorkindale Division															
Bergen Barflies	88	66	.571	-	X	W 1	6-4	48-29	40-37	33-24	14-6	25-7	27-27	17-19	19-13
Cleveland Naps	87	67	.565	1.0	-	L 2	6-4	43-34	44-33	24-24	7-8	16-16	34-20	17-19	20-12
Bradenton Buckeyes	83	71	.539	5.0	-	W 2	4-6	45-32	38-39	30-31	7-15	18-14	27-27	18-18	20-12
Mexicali Mallards	69	85	.448	19.0	-	L 1	4-6	34-43	35-42	27-28	6-4	17-15	20-34	14-22	18-14
Bill Kirwin Division															
Mimosa Mirthmakers	96	58	.623	-	X	W 1	5-5	53-24	43-34	33-25	5-7	25-7	20-16	30-24	21-11
Grand Rapids Wolverines	92	62	.597	4.0	-	W 2	6-4	50-27	42-35	31-26	11-8	20-12	19-17	29-25	24-8
Waukesha Freeman	85	69	.552	11.0	-	L 1	5-5	50-27	35-42	22-23	10-10	18-14	19-17	30-24	18-14
Pittsburgh Rebels	79	75	.513	17.0	-	L 2	4-6	40-37	39-38	27-28	6-10	21-11	20-16	19-35	19-13
Richard Seitz Division															
Buffalo Mules	86	68	.558	-	X	W 1	5-5	45-32	41-36	34-30	10-10	25-11	17-15	11-21	33-21
Turin Mountaineers	79	75	.513	7.0	-	L 1	5-5	42-35	37-40	23-36	12-12	22-14	15-17	14-18	28-26
London Tecumsehs	66	88	.429	20.0	-	L 1	4-6	33-44	33-44	31-30	13-7	16-20	12-20	13-19	25-29
Hereford Highlanders	53	101	.344	33.0	-	W 1	6-4	26-51	27-50	16-32	5-14	16-20	7-25	8-24	22-32

Mimosa and Buffalo repeated as Division Champions and used that experience to advance to the World Series. The Mules defeated South Starrucca in 5 games while the Mirthmakers swept Bergen in 4 straight.

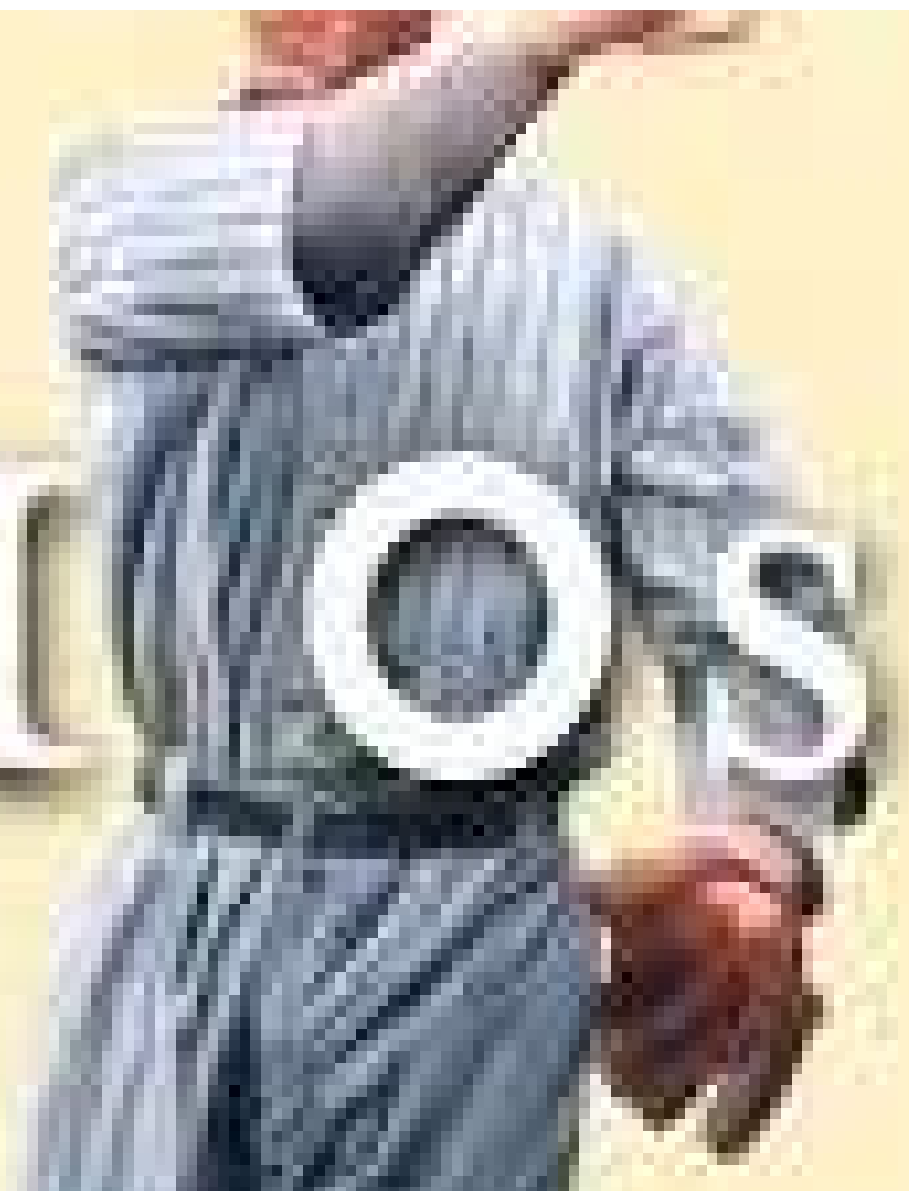
11

9

11

10

8





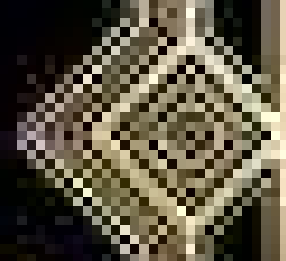
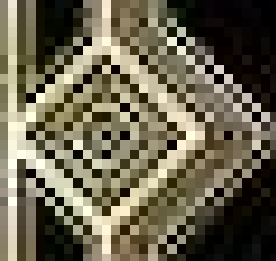
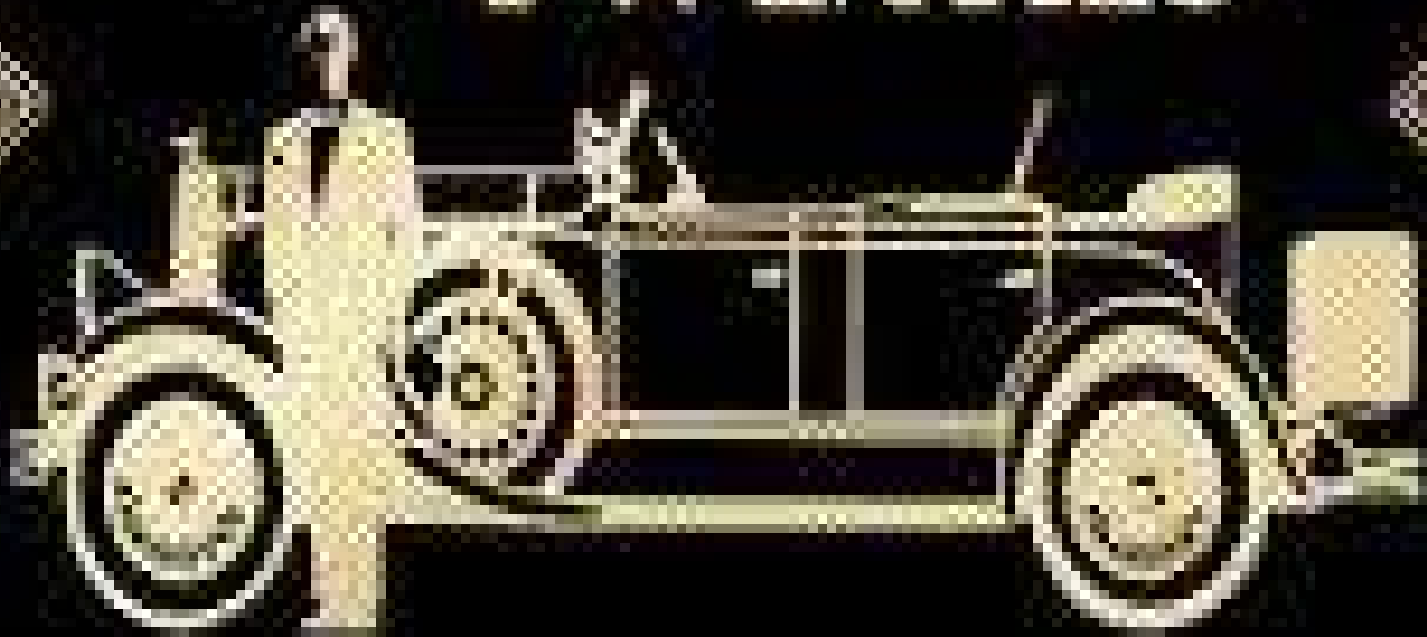
UNFILLED



**TCBA GOLD
1921-1943**

The Roaring

TWENTIES





1921 – Long Island Islanders
1922 – Bergen Barflies
1923 – Siouxland Explorers
1924 – Bergen Barflies
1925 – Mimosa Mirthmakers
1926 – Fortney Gators
1927 – Bergen Barflies
1928 – Bergen Barflies
1929 – Long Island Islanders

MARSHALL ISLANDS

1930 ▶ DECADE OF THE GREAT DEPRESSION • 1939

THE 20TH CENTURY

60



ECONOMIC DEPRESSION ENGLUFS THE WORLD

1930s



1930 – Kilkenny Gaelics

1931 – Long Island Islanders

1932 – South Starrucca Ainspans

1933 – Portsmouth Pubdwellers

1934 – Hyde Park VitaMen

1935 – Mimosa Mirthmakers

1936 – Fortney Gators

1937 - South Starrucca Ainspans

1938 – Kilkenny Gaelics

1939 – South Starrucca Ainspans

1040s

An aerial, black and white photograph of a baseball field during a game. The field is diamond-shaped with a pitcher's mound in the center. Several players are visible on the field, including one in the pitcher's circle and others on the bases and in the outfield. The stands are filled with spectators. In the background, there are several large signs or advertisements on the outfield fence. The text is overlaid on the right side of the image.

1940 – Chesapeake Regnads
1941 – Bergen Barflies
1942 – Sacramento Solons
1943 – South Starrucca Ainspans




1944-1974
TCBA
YESTERDAY

“The best thing about baseball today is its yesterdays.” Lawrence Ritter

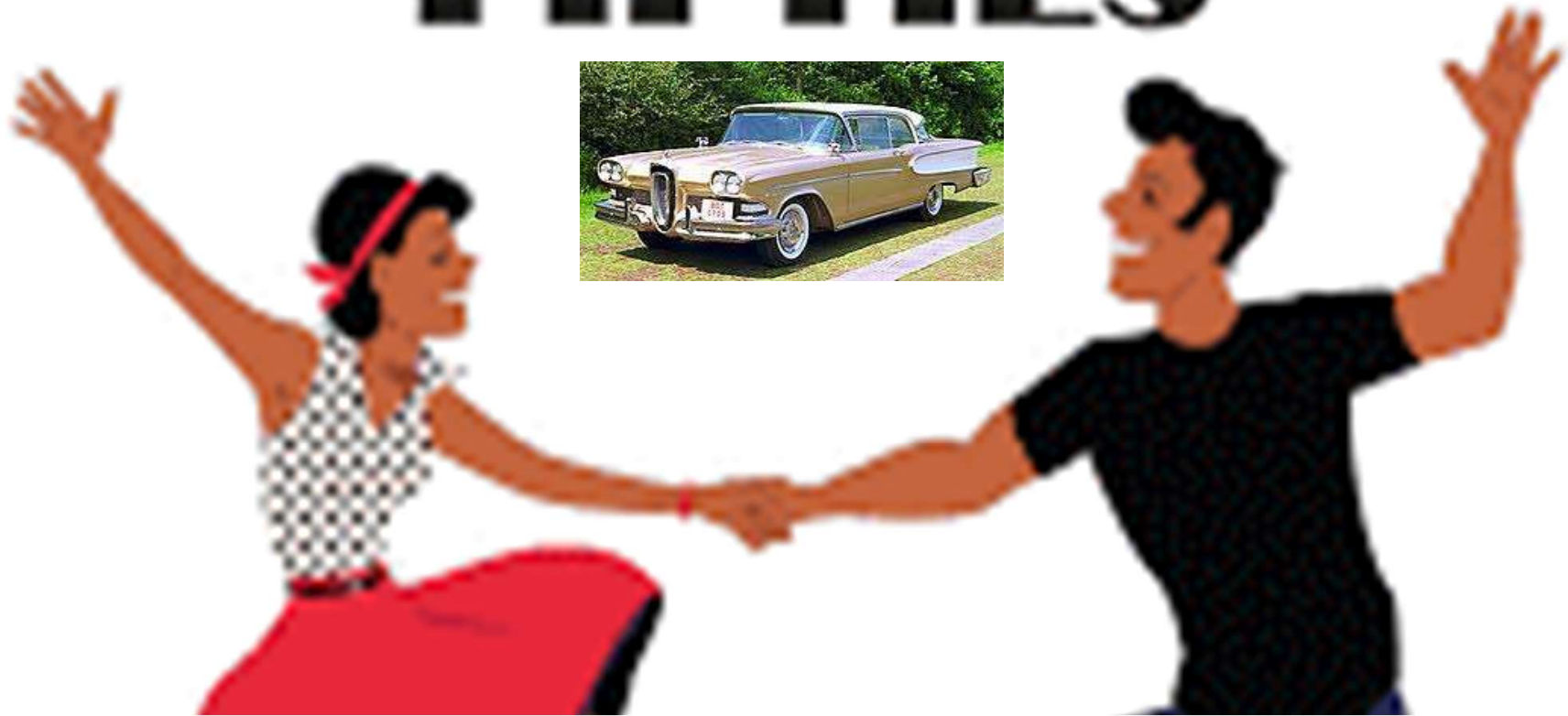
1940s





1944 – Long Island Islanders
1945 – Mexicali Mallards
1946 – Sacramento Solons
1947 – Mimosa Mirthmakers
1948 – Bradenton Buckeyes
1949 – Bradenton Buckeyes

THE FABULOUS FIFTIES





1950 – South Starrucca Ainspans
1951 – Mimosa Mirthmakers
1952 – Fortney Gators
1953 – Fortney Gators
1954 – South Starrucca Ainspans

1955 – Norfolk Pilots
1956 – Hyde Park VitaMen
1957 – Hyde Park VitaMen
1958 – Hyde Park VitaMen
1959 – Bradenton Buckeyes





- 1960 – Bradenton Buckeyes**
- 1961 – Wilderness Wraiths**
- 1962 – South Starrucca Ainspans**
- 1963 – South Starrucca Ainspans**
- 1964 – Mimosa Mirthmakers**
- 1965 – Bergen Barflies**
- 1966 – South Starrucca Ainspans**
- 1967 – South Starrucca Ainspans**
- 1968 – Long Island Islanders**
- 1969 – Cleveland Spiders**

ZOO

The image features the word "ZOO" in a large, bold, white, sans-serif font with a thick black outline. The letters are set against a vibrant, abstract background composed of overlapping, curved shapes in shades of orange, yellow, and teal. The overall style is graphic and modern.

An aerial photograph of a baseball stadium, showing the green field, brown dirt base paths, and the surrounding seating areas. The stadium is filled with spectators. In the background, there are several tall stadium lights. Overlaid on the center of the field is a list of teams and their years.

1970 – Fortney Gators
1971 – Newmarket Eh's
1972 – Hyde Park VitaMen
1973 – Long Island Islanders
1974 – Norfolk Pilots

TCBA



1975 - 2020





1975 – Harbor Beach Combers
1976 – Hyde Park Vitamen
1977 – Shiloh Spurs
1978 – Greylock Gators
1979 – Rockford Patriots

TIME

8

0

S




1980 – Norfolk Pilots **1985 – Long Island Islanders**
1981 – Winnebago Indians **1986 – Meadowlands Spartans**
1982 – Winnebago Indians **1987 – Long Island Islanders**
1983 – Long Island Islanders **1988 – Scranton Spanish Flies**
1984 – Mimosa Mirthmakers **1989 – Beacon Braves**

1990s



1990 – Scranton Spanish Flies **1995 – Horseshoe Bay Polos**
1991 – Scranton Spanish Flies **1996 – Bethesda Bambinos**
1992 – Bethesda Bambinos **1997 – Rapidan Rapids**
1993 – Scranton Spanish Flies **1998 – Newark Eagles**
1994 – Scranton Spanish Flies **1999 – Newark Eagles**



2000's



2000 – Long Island Islanders

2001 – Farmington Rats

2002 – Scranton Spanish Flies

2003 – Horseshoe Bay Polos

2004 – Newark Eagles

2005 – Pennsylvania Keystones

2006 – Farmington Rats

2007 – Long Island Islanders

2008 – Horseshoe Bay Polos

2009 – Silver Spring Senators



the
2010s

DECADE IN REVIEW



2010 – Scranton Spanish Flies **2015- Scranton Spanish Flies**
2011 – Fargo Fungoes **2016 – Rochester Cheetahs**
2012 – Bethesda Bambinos **2017 – Beacon Braves**
2013 – Bethesda Bambinos **2018 – Bethesda Bambinos**
2014 – Newark Eagles **2019 – Long Island Islanders**

THE

2020

S

2020-Newark Eagles
2021-Eastport Athletics



MEET THE

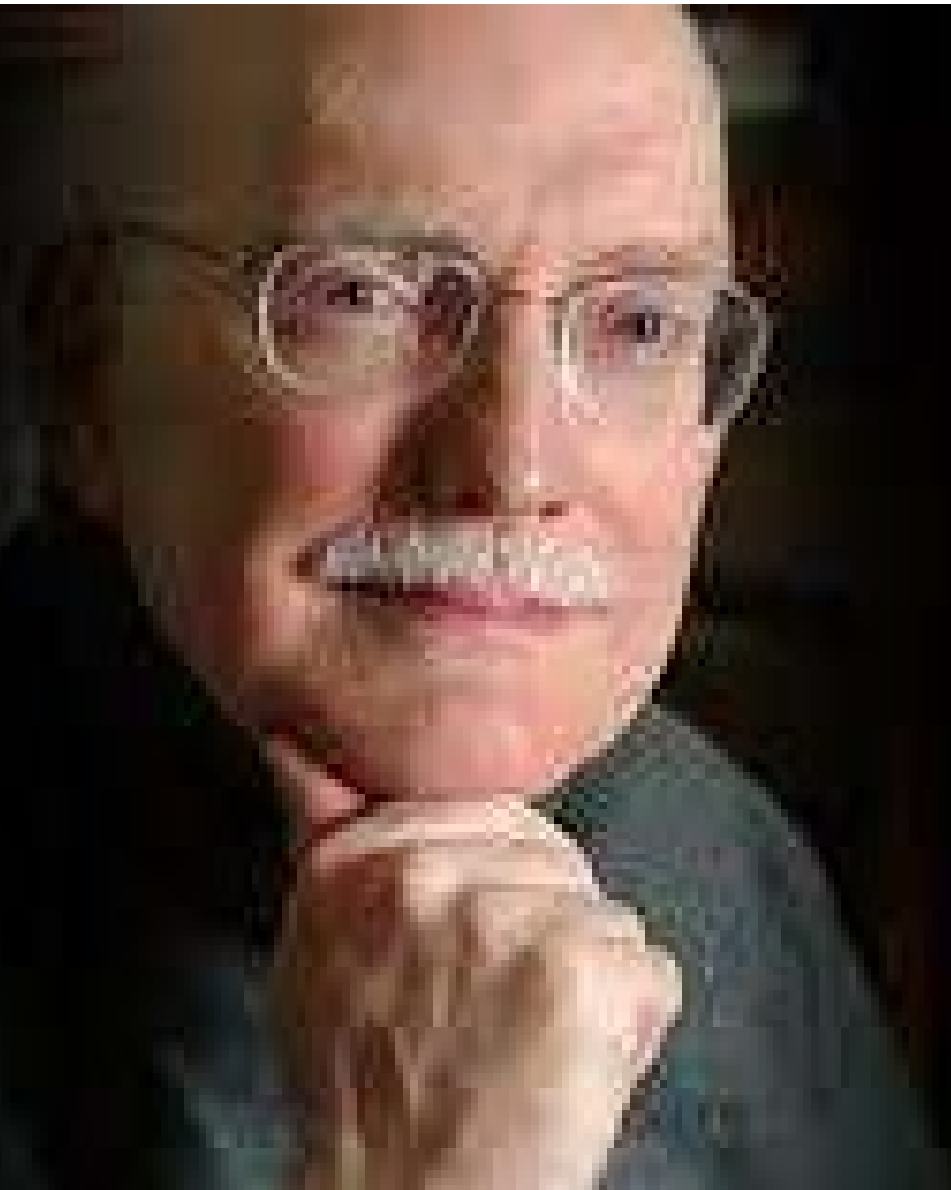
MANAGERS

MAHLEY DIVISION

a tribute to

DON MAHLEY

June 16, 1942 - March 1, 2014



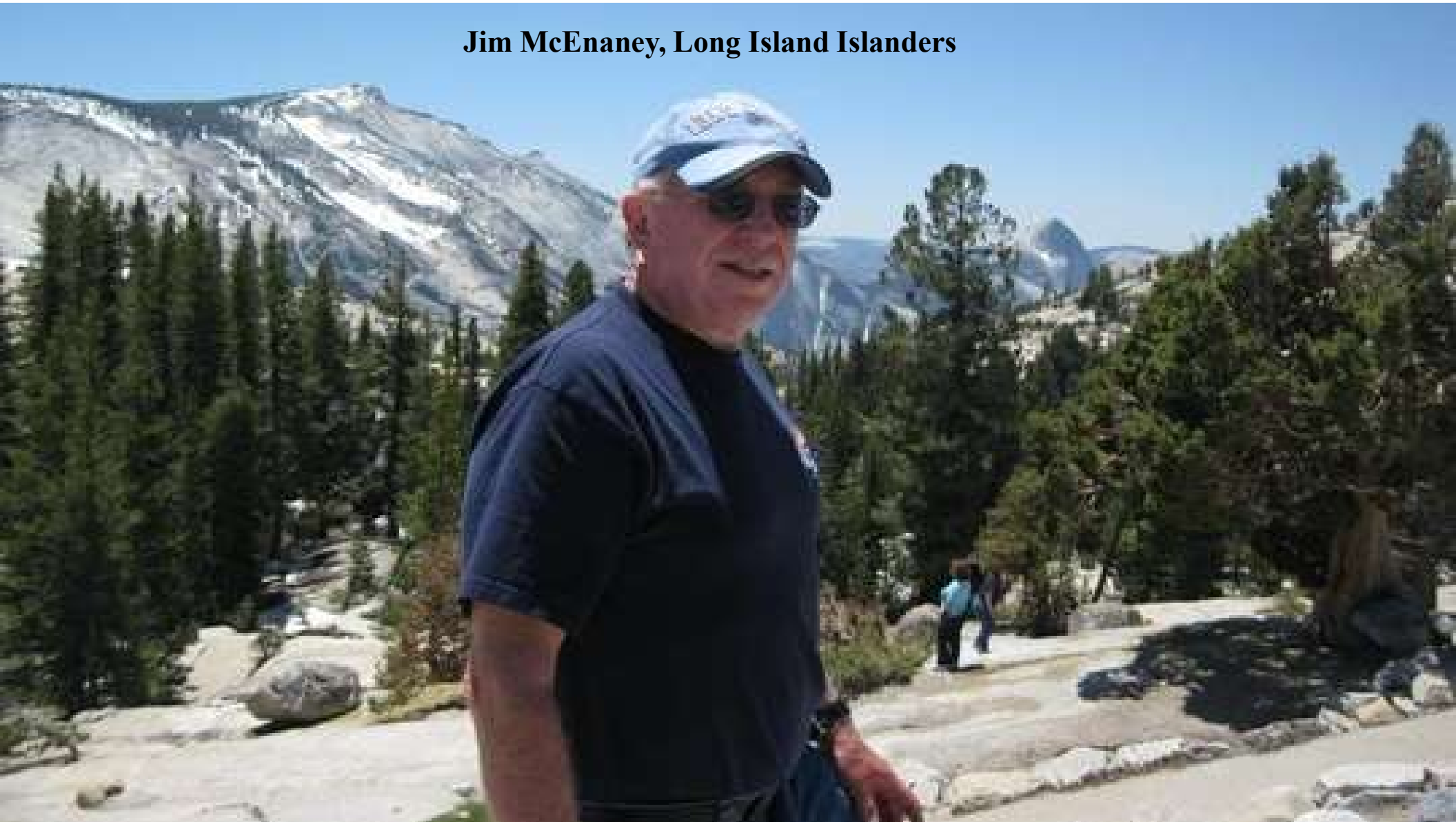


Bob Braun
Hyde Park
Vitamen

Marty
Fiehl
South
Starrucca
Ainspans



Jim McEnaney, Long Island Islanders





Craig Shifflett, Cleveland Spiders



LJ Honeycutt, Western Marvels



**McCORKINDALE
DIVISION**

Bradenton Buckeyes
Bob Wood



Cleveland Naps
Gerry Hobbs





Mexicali Mallards
Al Keefer



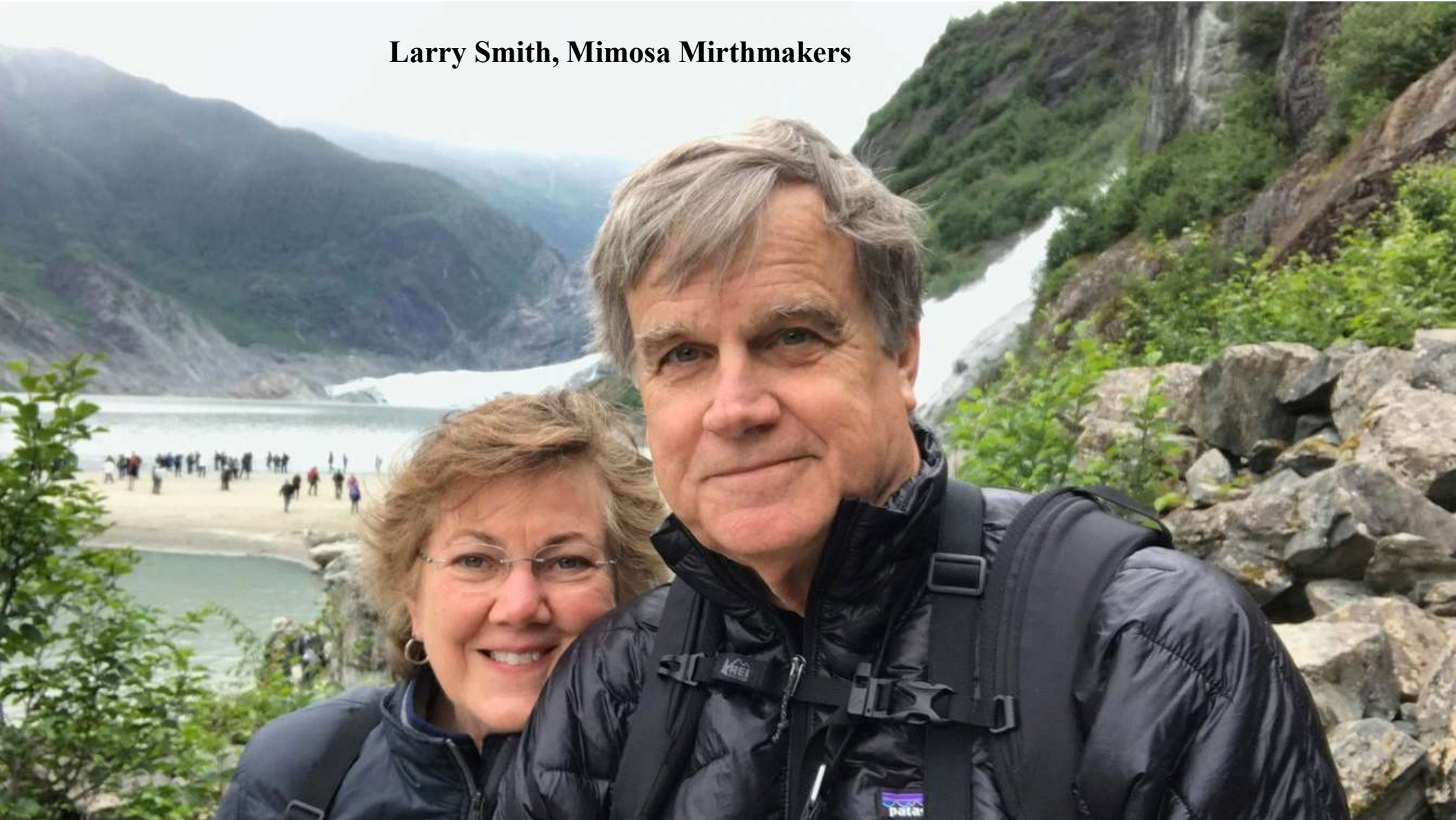
Bergen Barflies
Tom Meade

THE
Legend
HAS RETIRED

KIRWIN DIVISION



Larry Smith, Mimosa Mirthmakers



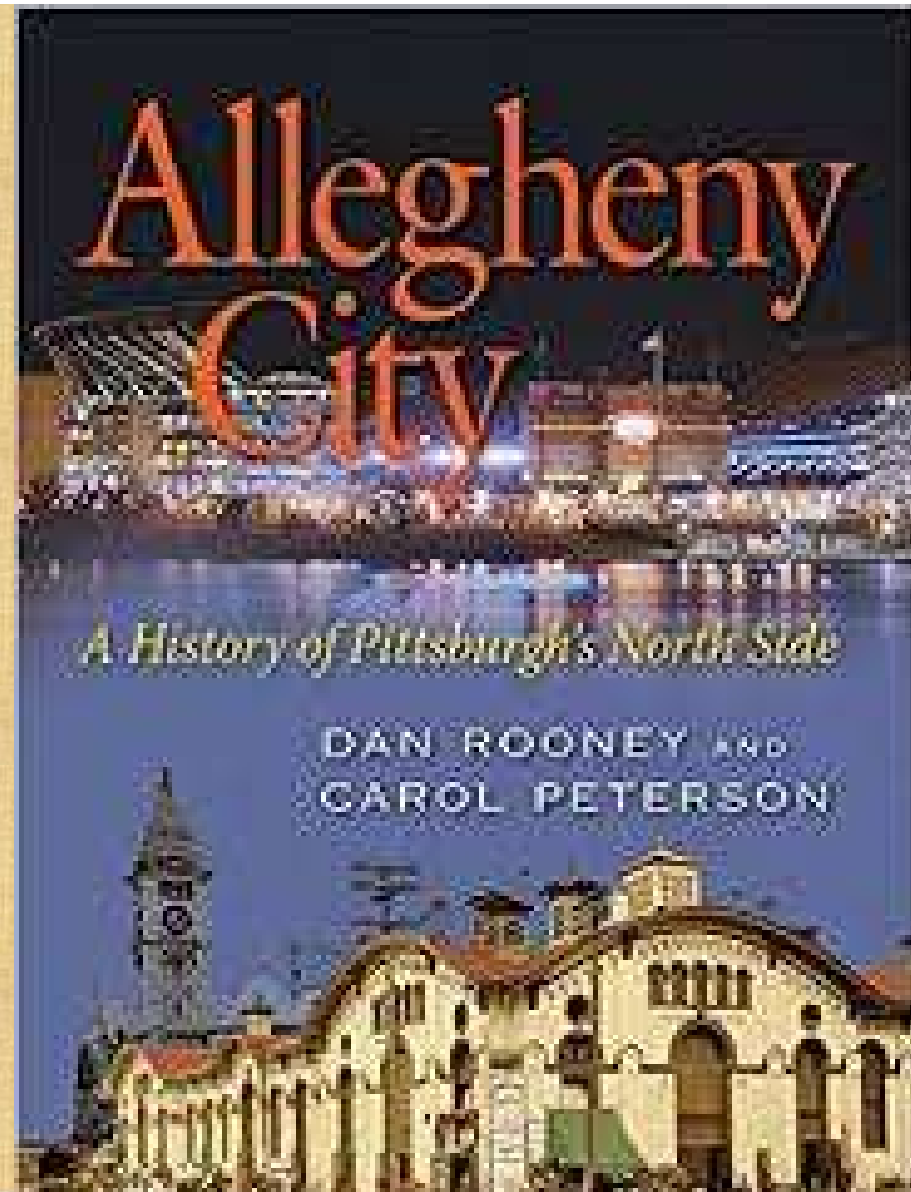


Ken Sajdak
Waukesha Freeman

Jeff Sajdak
Siouxland Explorers



Joe Elinich
Pittsburgh
Alleghenies





**SEITZ
DIVISION**



Steve Lyon
Hereford Highlanders



Ed Hebscher
London Tecumsehs



**Turin Mountaineers
J.R. Richardson**



**Aaron Anderson
Buffalo Mules**



The End