



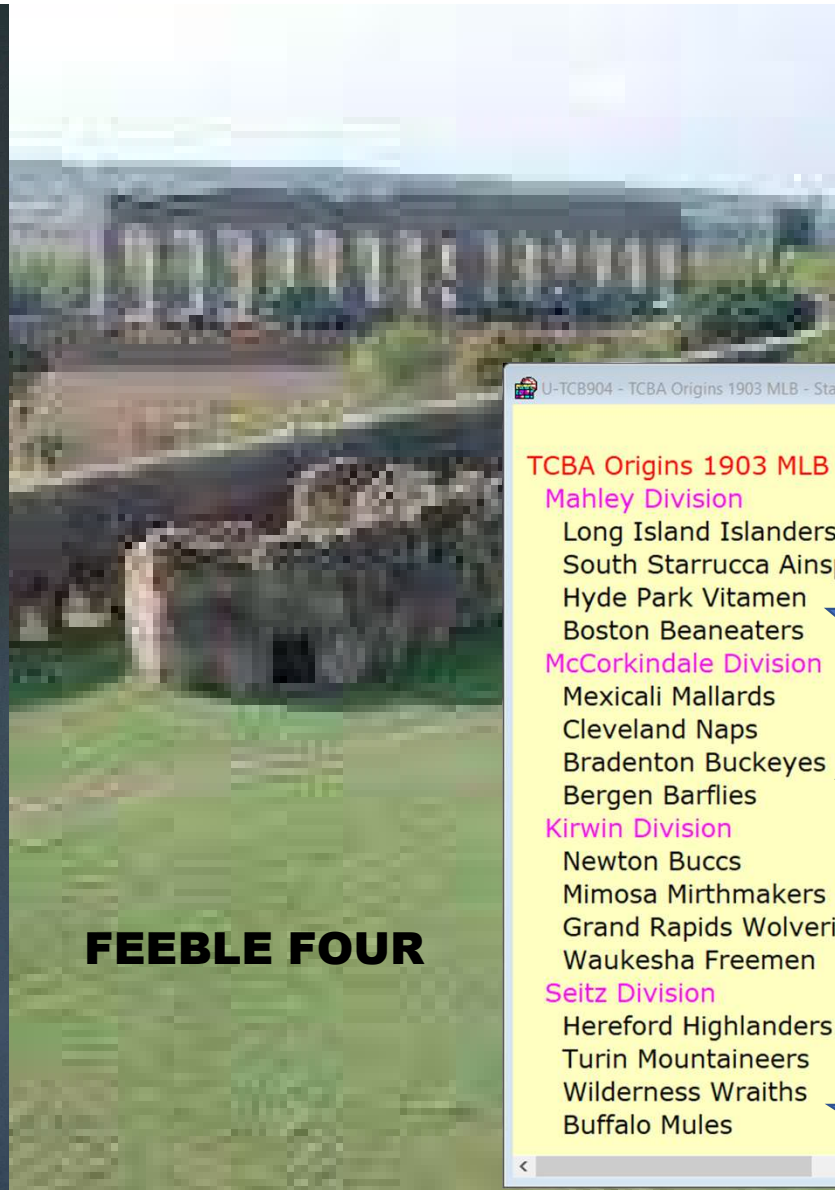
1905 **ORIGINS**

Precursor to TCBA Today

ORIGINS 1905

feeble





FEEBLE FOUR

J-TCB904 - TCBA Origins 1903 MLB - Standings on Sep. 22, 1903

	W	L	PCT	GB
TCBA Origins 1903 MLB				
Mahley Division				
Long Island Islanders	108	44	.711	-
South Starrucca Ainspans	94	59	.614	14.5
Hyde Park Vitamen	75	78	.490	33.5
Boston Beaneaters	51	103	.331	58.0
McCorkindale Division				
Mexicali Mallards	95	59	.617	-
Cleveland Naps	86	68	.558	9.0
Bradenton Buckeyes	73	81	.474	22.0
Bergen Barflies	56	98	.364	39.0
Kirwin Division				
Newton Buccs	91	63	.591	-
Mimosa Mirthmakers	81	73	.526	10.0
Grand Rapids Wolverines	67	87	.435	24.0
Waukesha Freeman	59	95	.383	32.0
Seitz Division				
Hereford Highlanders	84	70	.545	-
Turin Mountaineers	82	72	.532	2.0
Wilderness Wraiths	74	80	.481	10.0
Buffalo Mules	54	100	.351	30.0



O
R
I
G
I
N
S

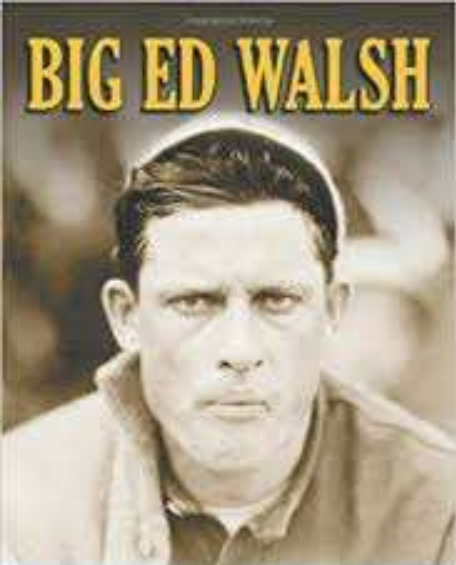
DRAFT

1905

FEEBLE FOUR

- 1-BOSTON BEANEATERS
- 2-BERGEN BARFLIES
- 3-BUFFALO MULES
- 4-WAUKESHA FREEMEN

- ### THE OTHERS
- 5-GRAND RAPIDS
 - 6-BRADENTON
 - 7-WILDERNESS
 - 8-HYDE PARK
 - 9-MIMOSA
 - 10-TURIN
 - 11-HEREFORD
 - 12-CLEVELAND
 - 13-NEWTON
 - 14-SOUTH STARRUCCA
 - 15-MEXICALI
 - 16-LONG ISLAND



FEEBLE FOUR
1-BS-ED WALSH
2-BE-HOOKS WILTSE
3-BU-SHERRY MAGEE
4-WA-MILLER HUGGINS

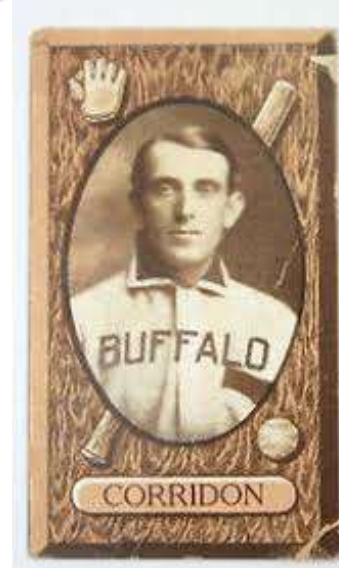
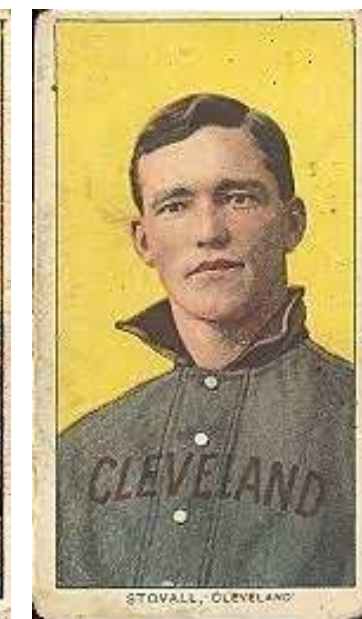
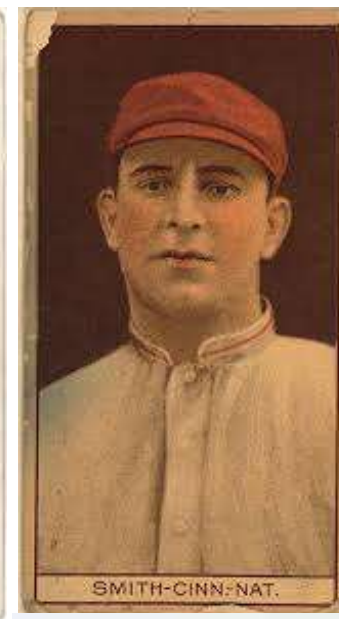
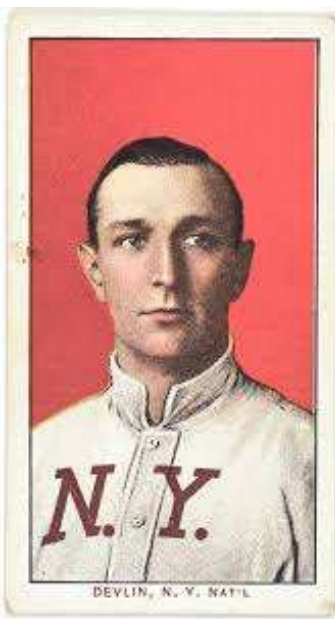


5- GW-ART DEVLIN
8-HP-FRANK SCHULTE
11-HH-JOHNNY LUSH
14-SO-CLAUDE ROSSMAN

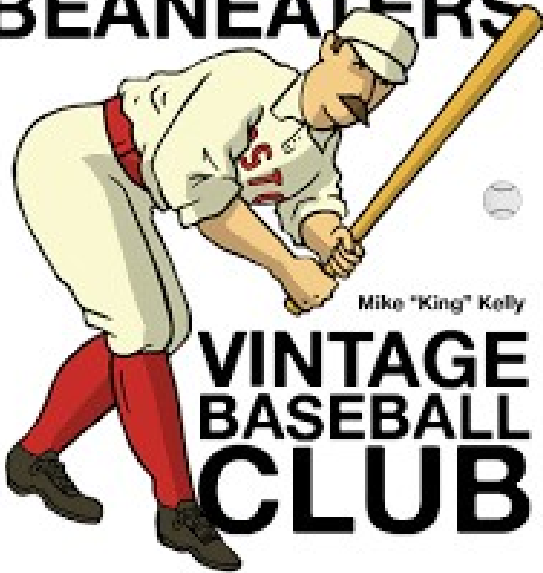
OTHER FIRST ROUNDERS
6-BR-HOWIE CAMNITZ
9-MI-GEORGE STOVALL
12-CL-ADMIRAL SCHLEI
15-ME-BUTTONS BRIGGS

7-WW-FRANK SMITH
10-TU-HARRY LUMLEY
13-NB-FRANK CORRIDON
16-LI-BUGS RAYMOND





BOSTON BEANEATERS



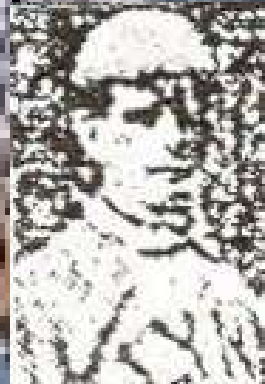
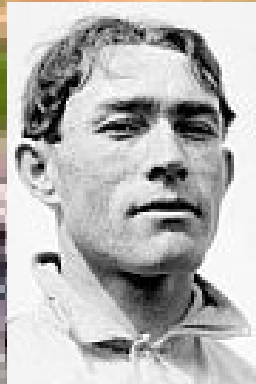
Mike "King" Kelly

VINTAGE BASEBALL CLUB



Boston Beaneaters Draft Picks

1-Ed Walsh 2-Traded 3-Traded 4-Jim McGinley 4a-Bill O'Neill
5-Jim Mullin 6-Sam Woodruff 7-John Brackenridge 8-Gene McAuliffe



Boston Beaneaters Opening Day Starting Lineup



- 1-John Titus, RF
- 2-Billy Gilbert, 2B
- 3-Topsy Hartsel, CF
- 4-Jimmy Slagle, LF
- 5-Tom Leach, 3B
- 6-Joe Sugden, C
- 7-Bill O'Neill, SS
- 8-Kitty Bransfield, 1B
- 9-Kid Nichols, P



Topsy Hartsel led the team in runs and hits and won a Gold Glove in CF. Tommie Leach had a team high 81 RBI and 15 triples while Cozy Dolan hit 4 HR. Leach and Billy Gilbert each swiped 31 bases for the Beaneaters

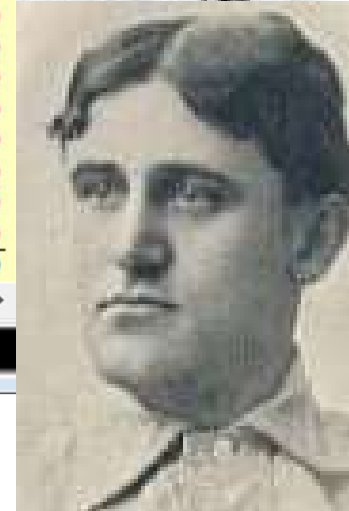
25 Players	Tm	Lg	AVG	G	AB	R	H	2B	3B	HR	TB	RBI	SO	BB	ASB	SB	CS
MCAULIFFE, G.	BS	TCBA	.556	3	9	1	5	0	0	0	5	2	0	2	0	0	0
BRACKENRIDGE, J.	BS	TCBA	.400	9	5	0	2	0	0	0	2	1	0	0	0	0	0
SUGDEN, J.	BS	TCBA	.287	88	300	31	86	7	1	0	95	35	35	27	3	3	0
HARTSEL, T.	BS	TCBA	.279	143	578	88	161	20	8	1	200	66	54	66	41	29	12
TITUS, J.	BS	TCBA	.278	131	536	80	149	36	2	0	189	51	41	48	17	8	9
DOLAN, C.	BS	TCBA	.277	117	452	55	125	3	10	4	160	50	40	31	34	21	13
CALLAHAN, N.	BS	TCBA	.273	105	363	46	99	10	1	0	111	30	37	31	19	14	5
O'NEILL, B.	BS	TCBA	.256	123	418	45	107	9	2	0	120	44	65	37	32	20	12
DONOVAN, W.	BS	TCBA	.252	41	123	12	31	2	2	0	37	17	20	4	3	2	1
LEACH, T.	BS	TCBA	.251	149	581	78	146	14	15	1	193	81	67	52	36	31	5
GILBERT, B.	BS	TCBA	.242	124	471	49	114	13	4	0	135	38	48	48	42	31	11
DRILL, L.	BS	TCBA	.230	85	287	30	66	10	1	0	78	42	28	31	7	4	3
LaFargue, E.	BS	TCBA	.230	53	161	9	37	10	0	0	47	17	34	10	1	0	1
WALSH, E.	BS	TCBA	.225	27	40	4	9	2	1	1	16	5	2	4	7	3	4
BRANSFIELD, K.	BS	TCBA	.216	153	555	59	120	17	6	1	152	60	75	35	9	8	1
WOOD, B.	BS	TCBA	.200	19	20	2	4	1	0	0	5	3	1	2	0	0	0
SLAGLE, J.	MI	TCBA	.185	7	27	5	5	0	1	0	7	3	2	7	2	2	0
FARRELL, D.	BS	TCBA	.171	28	35	5	6	1	0	0	7	3	2	5	0	0	0
NICHOLS, K.	BS	TCBA	.170	40	112	12	19	1	4	0	28	10	19	12	0	0	0
PATTERSON, R.	BS	TCBA	.159	24	69	5	11	0	0	0	11	6	12	3	0	0	0
MULLIN, J.	BS	TCBA	.158	38	57	11	9	0	0	0	9	4	8	7	5	4	1
GLADE, F.	BS	TCBA	.142	38	120	11	17	4	1	0	23	3	21	3	0	0	0
WOODRUFF, S.	BS	TCBA	.091	16	22	3	2	1	1	0	5	2	3	3	1	1	0
MILLIGAN, B.	BS	TCBA	.000	13	14	1	0	0	0	0	0	2	0	1	0	0	0
MCGINLEY, J.	BS	TCBA	.000	13	12	0	0	0	0	0	0	0	0	0	0	0	0
Boston Beaneaters			.248	1587	5367	642	1330	161	60	8	1635	575	614	469	259	181	78

U-TCB905 - Boston Beaneaters - Player Pitching

9 Pitchers	Tm	Lg	W	L	PCT	SV	ERA	G	GS	CG	SHO	QS	IP	H	R	ER	HR	SO	BB
NICHOLS, K.	BS	TCBA	18	22	.450	0	2.29	40	37	31	3	26	341.1	276	110	87	3	165	50
PATTERSON, R.	BS	TCBA	14	5	.737	1	2.42	24	22	14	2	14	193.1	147	72	52	3	65	22
MCGINLEY, J.	BS	TCBA	2	2	.500	3	2.48	13	2	1	0	0	40.0	37	16	11	0	11	4
DONOVAN, W.	BS	TCBA	15	21	.417	0	3.00	39	39	32	5	19	321.0	279	170	107	4	154	123
GLADE, F.	BS	TCBA	18	17	.514	0	3.10	38	37	25	1	20	310.1	295	136	107	1	154	77
WALSH, E.	BS	TCBA	6	9	.400	2	3.15	27	13	10	2	7	125.2	97	59	44	1	58	43
FARRELL, D.	BS	TCBA	0	0	-	0	4.15	2	0	0	0	0	4.1	5	2	2	0	1	2
MILLIGAN, B.	BS	TCBA	1	4	.200	0	4.71	13	4	3	0	2	49.2	70	40	26	4	17	12
BRACKENRIDGE, J.	BS	TCBA	0	0	-	1	9.31	9	0	0	0	0	19.1	36	24	20	2	9	10
Boston Beaneaters			74	80	.481	7	2.92	205	154	116	13	88	1405.0	1242	629	456	18	634	343

9 Pitchers	Tm	Lg	SUP/9	R/9	ERA	BF/9	BR/9	H/9	BB/9	SO/9	HR/9	ERPT	OBA	BF	BR	IBB	HB	WP	BK
NICHOLS, K.	BS	TCBA	3.2	2.90	2.29	36.1	8.8	7.3	1.2	4.4	.08	31.4	.218	1371	335	5	14	2	0
PATTERSON, R.	BS	TCBA	5.1	3.35	2.42	35.9	8.2	6.8	1.0	3.0	.14	15.1	.202	771	177	1	9	1	0
MCGINLEY, J.	BS	TCBA	2.0	3.60	2.48	36.0	9.7	8.3	.7	2.5	.00	2.9	.253	160	43	1	3	2	0
DONOVAN, W.	BS	TCBA	4.3	4.77	3.00	38.7	11.7	7.8	3.4	4.3	.11	4.3	.231	1382	418	2	18	9	0
GLADE, F.	BS	TCBA	4.2	3.94	3.10	38.8	11.3	8.6	2.2	4.5	.03	.6	.244	1339	389	0	17	7	0
WALSH, E.	BS	TCBA	2.0	4.23	3.15	37.2	10.2	6.9	3.1	4.2	.07	-.4	.210	520	143	0	3	0	0
FARRELL, D.	BS	TCBA	.0	4.15	4.15	39.5	14.5	10.4	4.2	2.1	.00	-.5	.294	19	7	0	0	0	0
MILLIGAN, B.	BS	TCBA	2.2	7.25	4.71	43.3	15.0	12.7	2.2	3.1	.72	-8.8	.317	239	83	0	1	0	0
BRACKENRIDGE, J.	BS	TCBA	.0	11.17	9.31	50.3	22.3	16.8	4.7	4.2	.93	-13.3	.383	108	48	0	2	0	0
Boston Beaneaters			3.7	4.03	2.92	37.9	10.5	8.0	2.1	4.1	.12	31.3	.232	5909	1643	9	67	21	0

2:51 PM | U-TCB905 | TCBA Origins 1904 MLB | TCBA Origins | Mahley Division | Boston Beaneaters



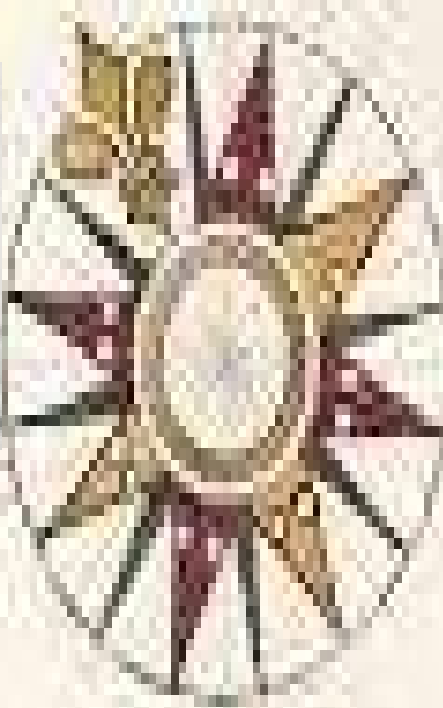
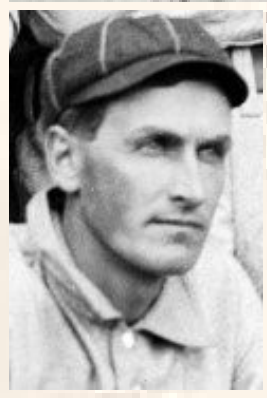
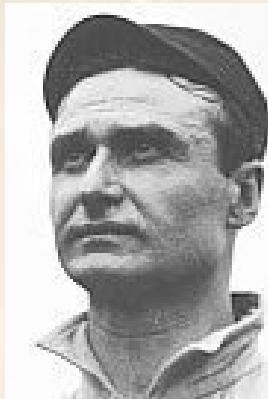
Kid Nichols led the staff with a 2.29 ERA and 165 Strikeouts. Nichols and Fred Glade each won 18 games for the Beaneaters.



Welcome To
Bergen County

BARFLIES

Bergen Barflies Draft Picks



1-Hooks Wiltse 2-Claude Elliott 3-Lou Bruce
4-Charlie Jaeger 5-Jack Gilbert 6-Deacon Van Buren

Old maps of Bergen County, New Jersey

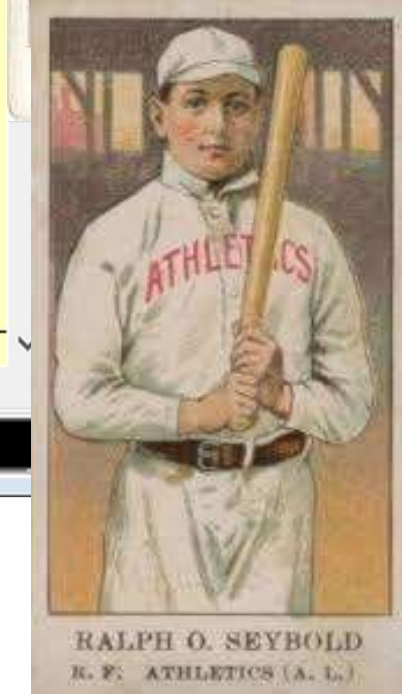


- 1-Kip Selbach, CF**
- 2-Socks Seybold, RF**
- 3-Mike Grady, C**
- 4-Charlie Hickman, 1B**
- 5-Dave Brain, LF**
- 6-Rabbit Robinson, 2B**
- 7-Lou Bruce, 3B**
- 8-Lefty Meade, 2B**
- 9-Jack Chesbro, P**

Bergen Barflies Opening Day Lineup



21 Players	Tm	Lg	AVG	G	AB	R	H	2B	3B	HR	TB	RBI	SO	BB	ASB	SB	CS
MITCHELL, F.	BE	TCBA	.333	13	12	1	4	2	0	0	6	1	0	0	1	1	0
GRADY, M.	BE	TCBA	.332	92	328	58	109	17	11	6	166	77	31	31	10	6	4
SEYBOLD, S.	BE	TCBA	.319	133	542	86	173	27	13	1	229	74	47	35	14	11	3
ROBINSON, R.	BE	TCBA	.288	85	313	50	90	15	11	0	127	41	47	25	21	15	6
SELBACH, K.	BE	TCBA	.271	147	606	106	164	33	6	0	209	55	65	74	23	17	6
BRUCE, L.	BE	TCBA	.268	121	426	46	114	10	0	0	124	41	34	25	7	5	2
HICKMAN, C.	BE	TCBA	.267	118	484	64	129	31	13	7	207	82	42	24	10	9	1
BRAIN, D.	BE	TCBA	.264	125	493	54	130	21	14	9	206	79	50	16	18	12	6
THONEY, J.	BE	TCBA	.262	97	313	45	82	11	7	0	107	34	42	18	16	10	6
CRIGER, L.	BE	TCBA	.248	104	343	35	85	16	5	1	114	36	42	32	3	3	0
CHESBRO, J.	BE	TCBA	.242	46	149	21	36	8	4	1	55	14	29	3	1	1	0
JONES, O.	BE	TCBA	.228	33	57	9	13	0	0	0	13	2	13	5	3	2	1
VAN BUREN, D.	BE	TCBA	.226	46	133	20	30	6	0	0	36	14	15	9	3	2	1
HULSWITT, R.	BE	TCBA	.222	130	468	54	104	17	7	1	138	43	81	27	10	9	1
JAEGER, C.	BE	TCBA	.222	21	9	1	2	0	0	0	2	1	0	0	0	0	0
WILTSE, H.	BE	TCBA	.214	28	56	10	12	3	0	0	15	3	3	7	1	1	0
BROWN, T.	BE	TCBA	.207	32	87	8	18	2	1	0	22	5	17	1	0	0	0
GILBERT, J.	BE	TCBA	.195	54	159	26	31	0	0	0	31	10	21	19	4	2	2
HOWELL, H.	BE	TCBA	.185	41	108	11	20	4	3	1	33	8	25	3	0	0	0
Meade, L.	BE	TCBA	.166	93	295	15	49	13	1	0	64	24	63	12	0	0	0
ELLIOTT, C.	BE	TCBA	.000	25	2	0	0	0	0	0	0	0	0	1	0	0	0
Bergen Barflies			.259	1584	5383	720	1395	236	96	27	1904	644	667	367	145	106	39



Kip Selbach scored 106 runs for Bergen. Socks Seybold hit .319 with 173 hits while Charlie “Piano Legs” Hickman drove in 82 runs and hit 7 homers. Dave Brain surprised with nine round trippers and also led the team with 14 triples.

10 Pitchers																		
Tm	Lg	W	L	PCT	SV	ERA	G	GS	CG	SHO	QS	IP	H	R	ER	HR	SO	BB
BRUCE, L.	BE	TCBA	0	0	-	0	.00	1	0	0	0	2.2	3	0	0	0	1	0
CHESBRO, J.	BE	TCBA	29	16	.644	0	1.90	46	44	35	5	378.2	262	132	80	2	180	78
BROWN, T.	BE	TCBA	18	7	.720	0	1.94	31	28	17	2	236.1	164	75	51	0	112	52
JAEGER, C.	BE	TCBA	3	2	.600	0	2.16	21	2	2	0	41.2	40	20	10	1	17	16
HOWELL, H.	BE	TCBA	18	17	.514	1	2.34	40	38	25	7	318.2	288	118	83	2	101	61
ELLIOTT, C.	BE	TCBA	3	1	.750	6	2.81	25	0	0	0	32.0	32	19	10	1	17	5
WILTSE, H.	BE	TCBA	8	10	.444	1	2.81	27	21	11	1	166.1	145	83	52	8	123	66
Meade, L.	BE	TCBA	0	0	-	0	2.89	4	0	0	0	9.1	12	3	3	0	1	4
JONES, O.	BE	TCBA	12	9	.571	0	2.96	32	19	9	2	176.1	174	80	58	0	55	55
MITCHELL, F.	BE	TCBA	0	0	-	0	4.76	9	1	0	0	22.2	32	20	12	0	15	12
Bergen Barflies			91	62	.595	8	2.33	236	153	99	17	1384.2	1152	550	359	14	622	349

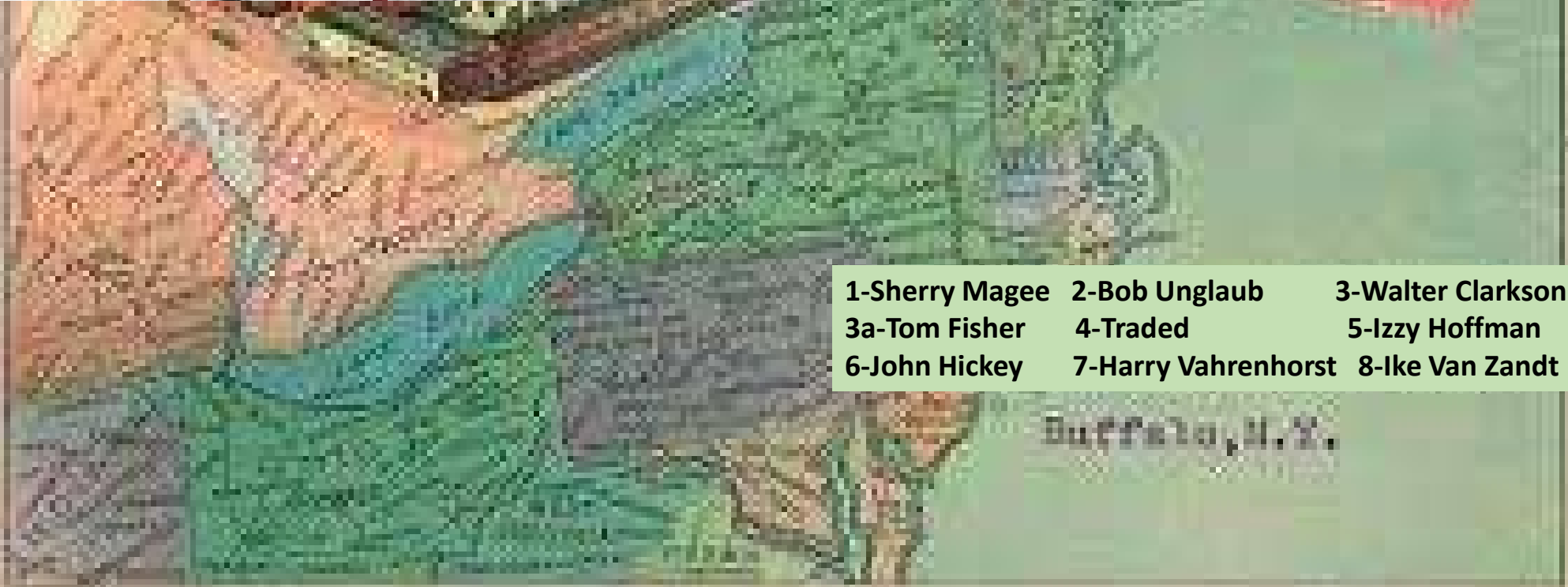
10 Pitchers																		
Tm	Lg	SUP/9	R/9	ERA	BF/9	BR/9	H/9	BB/9	SO/9	HR/9	ERPT	OBA	BF	BR	IBB	HB	WP	BK
BRUCE, L.	BE	TCBA	.0	.00	.00	37.1	10.1	10.1	.0	3.4	.00	.9	.273	11	3	0	0	0
CHESBRO, J.	BE	TCBA	4.8	3.14	1.90	36.0	8.3	6.2	1.8	4.3	.05	51.2	.189	1516	348	4	12	7
BROWN, T.	BE	TCBA	4.6	2.86	1.94	35.5	8.3	6.2	1.8	4.3	.00	30.9	.192	933	219	4	7	4
JAEGER, C.	BE	TCBA	2.2	4.32	2.16	40.6	12.3	8.6	3.2	3.7	.22	4.4	.242	188	57	1	2	1
HOWELL, H.	BE	TCBA	3.8	3.33	2.34	37.0	10.0	8.1	1.6	2.9	.06	27.4	.239	1310	355	5	11	1
ELLIOTT, C.	BE	TCBA	.0	5.34	2.81	37.4	10.4	9.0	1.1	4.8	.28	1.1	.256	133	37	1	1	0
WILTSE, H.	BE	TCBA	4.2	4.49	2.81	39.6	11.7	7.8	3.5	6.7	.43	5.6	.227	731	217	1	7	3
Meade, L.	BE	TCBA	.0	2.89	2.89	39.5	15.4	11.6	3.9	1.0	.00	.2	.324	41	16	0	0	0
JONES, O.	BE	TCBA	4.4	4.08	2.96	38.9	11.9	8.9	2.7	2.8	.00	3.1	.253	763	234	3	8	4
MITCHELL, F.	BE	TCBA	1.2	7.94	4.76	45.7	17.5	12.7	4.8	6.0	.00	4.1	.323	115	44	0	0	0
Bergen Barflies			4.1	3.57	2.33	37.3	9.9	7.5	2.1	4.0	.09	120.9	.221	5741	1530	19	48	20



After a rocky start, Jack Chesbro led the Barflies to 91 victories, recording 29 wins, including 5 shutouts with an ERA of 1.90. Mordecai (Three Finger) Brown (18-7, 1.94) and Handsome Harry Howell (18-17, 2.34), 7 shutouts, carried most of the remaining load, although Oscar Jones registered a dozen wins for the 2nd place Barflies.



M U L E S



- | | | |
|----------------|---------------------|-------------------|
| 1-Sherry Magee | 2-Bob Unglaub | 3-Walter Clarkson |
| 3a-Tom Fisher | 4-Traded | 5-Izzy Hoffman |
| 6-John Hickey | 7-Harry Vahrenhorst | 8-Ike Van Zandt |

Buffalo Mules Draft Picks

BUFFALO OPENING DAY STARTING LINEUP

1-Mike Donlin, LF

4-Fielder Jones, RF

7-George Moriarty, 3B

2-Ed McFarland, C

5-George Davis, SS

8-Jiggs Donahue, 1B

3-Sherry Magee, CF

6-Harry Vahrenhorst, 2B

9-Andy Coakley, P



23 Players	Tm	Lg	AVG	G	AB	R	H	2B	3B	HR	TB	RBI	SO	BB	ASB	SB	CS
DOSCHER, J.	BU	TCBA	.500	4	2	1	1	0	0	0	1	0	0	0	0	0	0
DONLIN, M.	BU	TCBA	.355	102	377	61	134	32	7	5	195	43	38	34	27	22	5
CLARKSON, W.	BU	TCBA	.328	26	61	11	20	0	4	0	28	5	5	6	0	0	0
MCFARLAND, E.	BU	TCBA	.318	51	179	18	57	19	3	0	82	20	10	19	2	2	0
ROTH, F.	BU	TCBA	.273	94	264	23	72	11	1	1	88	19	23	13	9	5	4
MAGEE, S.	BU	TCBA	.265	91	370	42	98	20	12	0	142	26	40	20	13	10	3
Katon, N.	BU	TCBA	.255	70	110	7	28	2	1	2	38	12	28	6	0	0	0
BENDER, C.	BU	TCBA	.250	28	72	10	18	1	1	0	21	5	8	10	4	3	1
DAVIS, G.	BU	TCBA	.244	150	553	47	135	27	10	0	182	55	43	61	40	34	6
DONAHUE, J.	BU	TCBA	.243	105	382	39	93	10	7	0	117	30	45	23	18	18	0
JONES, F.	BU	TCBA	.223	148	555	68	124	19	4	3	160	46	75	60	19	11	8
FISHER, T.	BU	TCBA	.221	24	68	6	15	1	0	3	25	8	9	3	0	0	0
JACKLITSCH, F.	BU	TCBA	.207	27	87	9	18	4	1	0	24	10	12	10	5	2	3
STRICKLETT, E.	BU	TCBA	.200	9	20	1	4	0	0	0	4	0	3	0	0	0	0
KITSON, F.	BU	TCBA	.171	29	76	10	13	0	0	2	19	3	8	2	0	0	0
UNGLAUB, B.	BU	TCBA	.165	82	249	12	41	7	0	0	48	18	33	9	0	0	0
MORIARTY, G.	BU	TCBA	.139	148	489	20	68	0	0	0	68	23	69	45	0	0	0
HOFFMAN, I.	BU	TCBA	.121	101	322	11	39	9	0	0	48	15	48	21	0	0	0
VAN ZANDT, I.	BU	TCBA	.112	112	403	16	45	0	0	0	45	16	49	3	0	0	0
VAHRENHORST, H.	BU	TCBA	.091	106	395	11	36	0	0	0	36	16	51	1	0	0	0
COAKLEY, A.	BU	TCBA	.083	9	24	1	2	0	0	0	2	1	6	0	0	0	0
PHILLIPPE, D.	BU	TCBA	.082	23	61	2	5	0	0	0	5	1	11	1	0	0	0
HICKEY, J.	BU	TCBA	.061	19	49	0	3	0	0	0	3	0	15	0	0	0	0
Buffalo Mules			.207	1558	5168	426	1069	162	51	16	1381	372	629	347	137	107	30

W
A
I
T
T
I
L
N
E
X
T
Y
E
A
R
!!



Donlin



Chief Bender

11 Pitchers	Tm	Lg	W	L	PCT	SV	ERA	G	GS	CG	SHO	QS	IP	H	R	ER	HR	SO	BB
DOSCHER, J.	BU	TCBA	1	1	.500	1	.00	4	0	0	0	0	6.2	6	1	0	0	2	1
COAKLEY, A.	BU	TCBA	2	5	.286	1	2.35	9	8	7	0	6	72.2	55	29	19	1	42	40
BENDER, C.	BU	TCBA	13	12	.520	0	2.70	27	25	21	4	13	220.1	186	98	66	1	186	56
PHILLIPPE, D.	BU	TCBA	5	16	.238	0	3.26	23	20	19	2	6	179.1	214	96	65	2	104	20
HOFFMAN, I.	BU	TCBA	0	0	-	0	3.38	2	0	0	0	0	2.2	3	1	1	0	1	1
KITSON, F.	BU	TCBA	5	19	.208	1	3.95	29	24	19	2	7	209.2	254	148	92	9	70	57
Katon, N.	BU	TCBA	2	13	.133	0	4.36	18	15	12	0	4	132.0	183	97	64	1	42	49
FISHER, T.	BU	TCBA	3	17	.150	0	4.77	23	20	17	1	5	168.0	225	140	89	1	104	65
STRICKLETT, E.	BU	TCBA	0	7	.000	1	5.53	9	7	4	0	1	53.2	94	55	33	0	36	12
CLARKSON, W.	BU	TCBA	4	13	.235	0	5.54	26	18	11	1	2	172.1	248	151	106	4	122	63
HICKEY, J.	BU	TCBA	0	16	.000	1	6.75	19	17	13	0	3	138.2	203	122	104	2	61	57
Buffalo Mules			35	119	.227	5	4.24	189	154	123	10	47	1356.0	1671	938	639	21	770	421

11 Pitchers	Tm	Lg	SUP/9	R/9	ERA	BF/9	BR/9	H/9	BB/9	SO/9	HR/9	ERPT	OBA	BF	BR	IBB	HB	WP	BK
DOSCHER, J.	BU	TCBA	.0	1.35	.00	36.5	9.4	8.1	1.4	2.7	.00	2.3	.240	27	7	0	0	0	0
COAKLEY, A.	BU	TCBA	2.5	3.59	2.35	39.5	12.1	6.8	4.8	5.2	.12	6.2	.206	319	98	1	4	0	0
BENDER, C.	BU	TCBA	2.9	4.00	2.70	37.6	10.2	7.6	2.3	7.6	.04	10.5	.221	920	250	0	8	5	0
PHILLIPPE, D.	BU	TCBA	1.9	4.82	3.26	39.6	12.1	10.7	.8	5.2	.10	-2.8	.288	789	241	4	11	2	0
HOFFMAN, I.	BU	TCBA	.0	3.38	3.38	40.5	13.5	10.1	3.4	3.4	.00	-.1	.273	12	4	0	0	0	0
KITSON, F.	BU	TCBA	2.4	6.35	3.95	41.5	13.7	10.9	2.4	3.0	.39	-19.2	.290	967	319	1	9	7	0
Katon, N.	BU	TCBA	3.9	6.61	4.36	42.6	15.9	12.5	3.2	2.9	.07	-18.2	.338	625	233	2	3	0	1
FISHER, T.	BU	TCBA	2.4	7.50	4.77	44.2	16.2	12.1	3.5	5.6	.05	-30.7	.312	825	303	0	13	3	2
STRICKLETT, E.	BU	TCBA	2.2	9.22	5.53	45.3	17.8	15.8	2.0	6.0	.00	-14.4	.370	270	106	0	0	0	0
CLARKSON, W.	BU	TCBA	3.2	7.89	5.54	43.9	16.6	13.0	3.1	6.4	.21	-46.2	.332	840	317	3	9	3	0
HICKEY, J.	BU	TCBA	1.4	7.92	6.75	43.2	16.9	13.2	3.6	4.0	.13	-55.9	.345	665	261	1	2	0	0
Buffalo Mules			2.5	6.23	4.24	41.5	14.2	11.1	2.7	5.1	.14	-168.4	.297	6259	2139	12	59	20	3



FREEMEN

Waukesha Freeman Draft Picks

1-Miller Huggins 2-Doc Reisling 3-Frank Huelsman 4-Joe Corbett
5-Bull Durham 6-She Donohue 7-Jack O'Connor



Waukesha Opening Day Lineup



- 1-Miller Huggins, 2B
- 2-Honus Wagner, SS
- 3-Lave Cross, 3B
- 4-Jake Stahl, 1B
- 5-Johnny Kling, LF
- 6-Frank Huelsman CF
- 7-Jack O'Neill, C
- 8-Frank Isbell, RF
- 9-Bill Dinneen, P

23 Players	Tm	Lg	AVG	G	AB	R	H	2B	3B	HR	TB	RBI	SO	BB	ASB	SB	CS
WAGNER, H.	WA	TCBA	.321	130	524	94	168	39	16	2	245	73	52	64	33	24	9
CROSS, L.	WA	TCBA	.307	148	610	65	187	44	11	0	253	106	42	20	15	11	4
HUGGINS, M.	WA	TCBA	.275	139	546	114	150	23	7	4	199	56	59	86	14	11	3
DUFFY, H.	WA	TCBA	.269	49	52	10	14	0	0	0	14	4	4	11	4	3	1
STAHL, J.	WA	TCBA	.264	134	534	64	141	25	14	1	197	78	50	33	40	35	5
HUELSMAN, F.	WA	TCBA	.246	98	353	39	87	20	2	0	111	28	56	36	6	2	4
CORBETT, J.	WA	TCBA	.227	14	22	1	5	0	0	0	5	1	3	0	0	0	0
Sajdak, K.	WA	TCBA	.227	123	441	38	100	13	4	7	142	43	87	29	2	0	2
BARCLAY, G.	WA	TCBA	.223	115	373	43	83	10	1	0	95	22	51	18	12	10	2
KLING, J.	WA	TCBA	.218	109	417	29	91	16	0	2	113	47	54	17	7	6	1
O'NEILL, J.	WA	TCBA	.215	56	205	18	44	5	0	2	55	20	25	9	0	0	0
DINNEEN, B.	WA	TCBA	.208	38	106	17	22	0	3	0	28	11	23	9	4	4	0
DONAHUE, S.	WA	TCBA	.191	45	141	12	27	2	0	0	29	7	20	2	8	7	1
O'CONNOR, J.	WA	TCBA	.187	62	209	13	39	6	0	0	45	3	30	9	1	0	1
ISBELL, F.	WA	TCBA	.185	115	406	36	75	10	4	2	99	38	51	27	26	19	7
MCGRAW, J.	WA	TCBA	.182	8	11	2	2	0	0	0	2	1	1	3	0	0	0
MILLER, R.	WA	TCBA	.158	21	19	2	3	0	0	0	3	1	1	7	0	0	0
JOSS, A.	WA	TCBA	.130	27	77	4	10	0	0	0	10	3	13	2	0	0	0
WEIMER, J.	WA	TCBA	.129	38	116	15	15	0	0	0	15	5	20	7	1	1	0
PITTINGER, T.	WA	TCBA	.088	37	114	5	10	1	0	0	11	5	21	4	0	0	0
BLISS, E.	WA	TCBA	.077	20	39	0	3	0	0	0	3	3	7	0	0	0	0
REISLING, D.	WA	TCBA	.063	21	16	2	1	0	0	0	1	2	1	1	0	0	0
DURHAM, B.	WA	TCBA	.000	5	2	0	0	0	0	0	0	0	0	0	0	0	0
Waukesha Freeman			.239	1552	5333	623	1277	214	62	20	1675	557	671	394	173	133	40



Honus Wagner and Lave Cross led the offense, combining for nearly 500 total bases and hitting over .300. Miller Huggins scored 114 runs for Waukesha. Jake Stahl stole 35 bases for the club.

9 Pitchers	Tm	Lg	W	L	PCT	SV	ERA	G	GS	CG	SHO	QS	IP	H	R	ER	HR	SO	BB
REISLING, D.	WA	TCBA	3	5	.375	4	2.05	21	4	3	0	3	70.1	52	21	16	0	31	15
WEIMER, J.	WA	TCBA	22	13	.629	0	2.10	38	38	28	3	27	321.2	231	112	75	3	194	83
JOSS, A.	WA	TCBA	16	7	.696	1	2.12	27	24	19	1	16	220.2	153	73	52	2	120	38
DINNEEN, B.	WA	TCBA	16	19	.457	0	2.89	38	38	28	0	18	324.0	279	149	104	3	147	68
PITTINGER, T.	WA	TCBA	14	22	.389	0	3.85	37	37	26	2	15	306.1	282	165	131	3	169	148
CORBETT, J.	WA	TCBA	1	6	.143	1	6.08	14	6	5	0	1	63.2	87	62	43	2	56	37
MILLER, R.	WA	TCBA	2	6	.250	1	6.47	21	6	6	0	1	72.1	102	59	52	2	11	29
DURHAM, B.	WA	TCBA	0	2	.000	0	6.75	5	1	0	0	0	10.2	14	11	8	0	3	5
Sajdak, K.	WA	TCBA	0	0	-	0	10.50	3	0	0	0	0	6.0	14	9	7	0	1	1
Waukesha Freeman			74	80	.481	7	3.15	204	154	115	6	81	1395.2	1214	661	488	15	732	424

9 Pitchers	Tm	Lg	SUP/9	R/9	ERA	BF/9	BR/9	H/9	BB/9	SO/9	HR/9	ERPT	OBA	BF	BR	IBB	HB	WP	BK
REISLING, D.	WA	TCBA	1.0	2.69	2.05	35.4	8.2	6.7	1.3	4.0	.00	8.4	.209	277	64	5	2	0	0
WEIMER, J.	WA	TCBA	4.0	3.13	2.10	36.6	9.2	6.5	2.3	5.4	.08	36.6	.198	1309	329	2	17	1	3
JOSS, A.	WA	TCBA	3.9	2.98	2.12	34.9	7.7	6.2	1.2	4.9	.08	24.5	.193	856	188	8	5	3	1
DINNEEN, B.	WA	TCBA	4.3	4.14	2.89	37.1	9.9	7.8	1.8	4.1	.08	8.4	.229	1337	356	3	12	4	0
PITTINGER, T.	WA	TCBA	3.5	4.85	3.85	39.4	12.8	8.3	4.3	5.0	.09	-24.8	.245	1342	437	2	9	8	0
CORBETT, J.	WA	TCBA	2.7	8.76	6.08	45.7	18.1	12.3	5.1	7.9	.28	-20.9	.320	323	128	1	5	3	0
MILLER, R.	WA	TCBA	3.9	7.34	6.47	43.9	16.9	12.7	3.6	1.4	.25	-26.9	.334	353	136	0	5	4	0
DURHAM, B.	WA	TCBA	.8	9.28	6.75	44.7	16.0	11.8	4.2	2.5	.00	-4.3	.304	53	19	0	0	0	0
Sajdak, K.	WA	TCBA	.0	13.50	10.50	46.5	22.5	21.0	1.5	1.5	.00	-4.9	.467	31	15	0	0	0	0
Waukesha Freeman			3.7	4.26	3.15	37.9	10.8	7.8	2.6	4.7	.10	-3.9	.232	5881	1672	21	55	23	4

Jake Weimer (22-13), Addie Joss (16-7), Bill Dinneen (16-19) and Togie Pittinger (14-22) combined for all but six of the Freeman wins this year. Weimer (2.10) and Joss (2.12) competed for the ERA lead. Weimer, Dinneen and Pittinger all worked over 300 innings for the second place Freeman.



1-Art Devlin 2-Mike Lynch 3-Charlie Carr 4-Ed McNichol 5-Cy Ferry 6-Bucky Veil 7-Kid O'Hara 8-Tom Doran



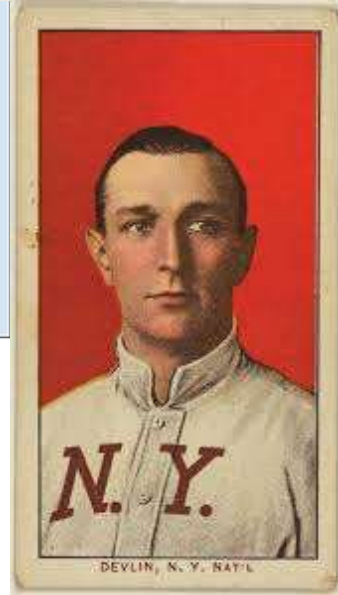
Grand Rapid Wolverines Draft Picks



- 1-Art Devlin, 3B**
- 2-Bill Dahlen, SS**
- 3-Ducky Holmes, LF**
- 4-Buck Freeman, CF**
- 5-Sam Crawford, RF**
- 6-Dick Padden, 2B**
- 7-Harry Bemis, C**
- 8-Charlie Carr, 1B**
- 9-Ed Killian, P**

**Grand Rapids Opening Day
Starting Lineup**

21 Players	Tm	Lg	AVG	G	AB	R	H	2B	3B	HR	TB	RBI	SO	BB	ASB	SB	CS
HOLMES, D.	GW	TCBA	.304	83	286	39	87	17	10	0	124	54	27	17	13	11	2
FREEMAN, B.	GW	TCBA	.279	152	606	81	169	24	13	12	255	91	55	37	9	6	3
O'HARA, K.	GW	TCBA	.278	40	72	10	20	0	0	0	20	4	3	11	2	1	1
DAHLEN, B.	GW	TCBA	.276	136	576	84	159	36	6	0	207	55	41	40	39	30	9
CASEY, D.	GW	TCBA	.267	113	424	34	113	13	3	0	132	51	39	15	20	13	7
HOFFMAN, D.	GW	TCBA	.259	54	189	21	49	3	6	2	70	29	12	4	7	5	2
CRAWFORD, S.	GW	TCBA	.253	146	588	79	149	17	19	0	204	63	57	44	19	15	4
DEVLIN, A.	GW	TCBA	.252	112	448	84	113	16	5	0	139	35	51	60	30	23	7
VEIL, B.	GW	TCBA	.238	19	42	0	10	0	0	0	10	2	9	0	0	0	0
PADDEN, D.	GW	TCBA	.232	91	311	42	72	9	3	0	87	35	49	25	12	9	3
DUNLEAVY, J.	GW	TCBA	.217	65	198	23	43	8	3	0	57	14	28	11	4	4	0
FERRY, C.	GW	TCBA	.217	25	60	11	13	10	0	0	23	6	6	2	0	0	0
CARR, C.	GW	TCBA	.215	152	549	41	118	21	5	0	149	53	86	21	5	2	3
LYNCH, M.	GW	TCBA	.209	30	91	14	19	2	3	0	27	7	8	4	0	0	0
BEMIS, H.	GW	TCBA	.197	93	310	34	61	14	8	0	91	31	48	12	2	2	0
Sajdak, D.	GW	TCBA	.186	59	129	9	24	2	2	3	39	14	26	3	0	0	0
JORDAN, D.	GW	TCBA	.160	74	262	15	42	8	2	0	54	20	36	5	4	4	0
KILLIAN, E.	GW	TCBA	.153	38	111	17	17	2	2	0	23	6	23	7	2	1	1
DORAN, T.	GW	TCBA	.133	13	15	3	2	0	2	0	6	3	1	1	0	0	0
SANDERS, W.	GW	TCBA	.105	25	57	3	6	0	0	0	6	3	10	1	0	0	0
MCNICHOL, E.	GW	TCBA	.083	26	60	1	5	0	0	0	5	3	7	0	0	0	0
Grand Rapids Wolverines			.240	1546	5384	645	1291	202	92	17	1728	579	622	320	168	126	42



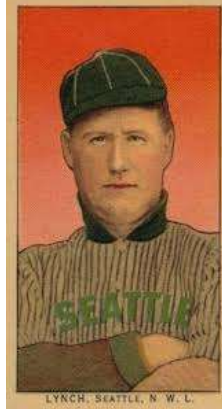
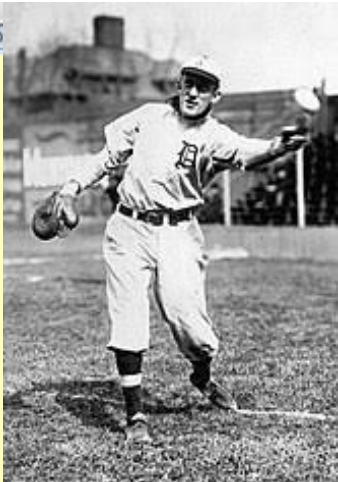
Buck Feeman led the club with 12 HR's and 91 RBI. Art Devlin (right) and Bill Dahlen each scored 84 runs. Wahoo Sam Crawford had a team high 19 triples. Dahlen had an even three dozen (36) doubles.

U-TCB905 - Grand Rapids wolverines - Player Pitching

9 Pitchers		Tm	Lg	W	L	PCT	SV	ERA	G	GS	CG	SHO	QS	IP	H	R	ER	HR	SO	BB
KILLIAN, E.	GW	TCBA	16	15	.516	0	2.19	38	37	26	4	22	328.1	261	115	80	0	100	95	
LYNCH, M.	GW	TCBA	10	15	.400	0	3.59	30	28	17	1	9	243.1	216	143	97	1	108	129	
MCNICHOL, E.	GW	TCBA	6	18	.250	0	4.52	26	22	14	1	7	189.1	220	114	95	3	67	87	
VEIL, B.	GW	TCBA	6	10	.375	0	4.86	19	17	8	0	6	126.0	152	79	68	0	36	53	
O'HARA, K.	GW	TCBA	2	2	.500	2	5.13	16	0	0	0	0	33.1	41	24	19	1	11	12	
FERRY, C.	GW	TCBA	9	11	.450	0	5.15	25	19	13	0	6	167.2	214	128	96	0	72	90	
Sajdak, D.	GW	TCBA	1	3	.250	0	5.43	21	4	2	0	1	56.1	78	45	34	1	25	26	
SANDERS, W.	GW	TCBA	6	14	.300	1	5.55	25	20	11	0	4	160.2	257	122	99	8	85	39	
DUNLEAVY, J.	GW	TCBA	2	8	.200	1	6.72	21	7	4	0	0	79.0	113	83	59	5	60	37	
Grand Rapids Wolverines				58	96	.377	4	4.21	221	154	95	6	55	1384.0	1552	853	647	19	564	568

9 Pitchers		Tm	Lg	SUP/9	R/9	ERA	BF/9	BR/9	H/9	BB/9	SO/9	HR/9	ERPT	OBA	BF	BR	IBB	HB	WP	BK
KILLIAN, E.	GW	TCBA	4.0	3.15	2.19	37.1	9.7	7.2	2.3	2.7	.00	33.7	.214	1352	353	11	8	3	2	
LYNCH, M.	GW	TCBA	4.7	5.29	3.59	40.3	13.0	8.0	4.5	4.0	.04	-12.7	.235	1090	352	6	13	11	0	
MCNICHOL, E.	GW	TCBA	2.6	5.42	4.52	41.0	14.8	10.5	4.1	3.2	.14	-29.4	.293	863	312	1	6	4	0	
VEIL, B.	GW	TCBA	3.2	5.64	4.86	40.3	14.9	10.9	3.8	2.6	.00	-24.4	.307	564	208	0	3	0	1	
O'HARA, K.	GW	TCBA	.0	6.48	5.13	41.0	15.1	11.1	3.2	3.0	.27	-7.5	.306	152	56	0	3	0	0	
FERRY, C.	GW	TCBA	5.1	6.87	5.15	43.2	16.7	11.5	4.7	3.9	.00	-37.9	.309	804	312	2	10	5	0	
Sajdak, D.	GW	TCBA	2.2	7.19	5.43	43.3	16.8	12.5	4.2	4.0	.16	-14.5	.331	271	105	0	1	0	1	
SANDERS, W.	GW	TCBA	3.9	6.83	5.55	43.4	17.1	14.4	2.1	4.8	.45	-43.4	.364	775	305	1	10	7	0	
DUNLEAVY, J.	GW	TCBA	2.2	9.46	6.72	45.3	17.3	12.9	4.2	6.8	.57	-31.6	.319	398	152	0	2	2	0	
Grand Rapids Wolverines				3.7	5.55	4.21	40.8	14.0	10.1	3.6	3.7	.12	-167.7	.282	6269	2155	21	56	32	4

2:49 PM U-TCB905 TCBA Origins 1904 MLB TCBA Origins Kirwin Division Grand Rapids Wolverines



Ed Killian was “the” man on the mound for the Wolverines this season, leading the team in wins (16), ERA (2.19), games (38), starts (37), complete games (26), shutouts (4), quality starts (22) and innings (328.1). Mike Lynch was the only other hurler to reach double digits in wins (10)

BRADENTON, FL

BUCKEYES





1-Howie Camnitz 2-Jim Archer 3-Traded 4-Traded 5-Bill Byers 6-Fred Holmes 7-Harry Cassady 8-Dutch Rudolph

Bradenton Buckeyes Draft Picks

- 1-Ernie Diehl, LF**
- 2-Kid Elberfeld, SS**
- 3-Nap LaJoie, 2B**
- 4-Cy Seymour, RF**
- 5-Jake Beckley, 1B**
- 6-Homer Smoot, CF**
- 7-Woody Wood, 3B**
- 8-Boileryard Clarke, C**
- 9-Dummy Taylor, P**



Bradenton Buckeyes Opening Day Lineup

23 Players	Tm	Lg	AVG	G	AB	R	H	2B	3B	HR	TB	RBI	SO	BB	ASB	SB	CS
LAJOIE, N.	BR	TCBA	.402	146	542	125	218	58	10	0	296	86	42	44	42	27	15
BECKLEY, J.	BR	TCBA	.335	148	547	84	183	20	10	0	223	104	40	45	26	17	9
SEYMOUR, C.	BR	TCBA	.333	139	531	91	177	37	14	2	248	113	47	34	29	20	9
ELBERFELD, K.	BR	TCBA	.295	127	437	89	129	21	6	4	174	50	39	46	34	24	10
SMOOT, H.	BR	TCBA	.278	147	528	69	147	29	6	4	200	99	50	33	26	16	10
GLEASON, H.	BR	TCBA	.267	62	105	9	28	8	0	0	36	12	11	4	1	1	0
BYERS, B.	BR	TCBA	.208	42	77	7	16	0	0	0	16	2	12	4	1	0	1
CASSADY, H.	BR	TCBA	.205	62	117	21	24	0	0	0	24	7	20	6	8	6	2
Wood, W.	BR	TCBA	.198	153	575	36	114	20	3	5	155	77	111	37	1	1	0
SMITH, A.	BR	TCBA	.191	41	68	10	13	1	0	0	14	8	8	10	1	1	0
CLARKE, B.	BR	TCBA	.189	146	493	42	93	14	0	0	107	50	69	26	5	3	2
WALKER, T.	BR	TCBA	.186	28	86	10	16	0	0	0	16	5	13	3	0	0	0
WILLIAMS, O.	BR	TCBA	.181	102	326	44	59	8	1	0	69	18	48	19	16	14	2
ARCHER, J.	BR	TCBA	.171	20	35	2	6	0	0	0	6	1	5	0	0	0	0
HOLMES, F.	BR	TCBA	.167	8	12	1	2	1	0	0	3	1	5	0	0	0	0
THATCHER, G.	BR	TCBA	.167	21	12	0	2	0	0	0	2	0	1	0	0	0	0
HARPER, J.	BR	TCBA	.149	38	114	9	17	3	2	0	24	6	18	1	3	1	2
HENLEY, W.	BR	TCBA	.143	38	119	9	17	4	0	0	21	6	16	1	0	0	0
TAYLOR, D.	BR	TCBA	.142	39	113	15	16	1	1	0	19	9	17	11	0	0	0
DIEHL, E.	BR	TCBA	.137	123	423	73	58	0	0	0	58	18	61	75	34	29	5
AMES, R.	BR	TCBA	.132	26	38	2	5	1	0	0	6	2	10	3	1	1	0
RUDOLPH, D.	BR	TCBA	.063	12	16	0	1	0	0	0	1	0	7	0	0	0	0
CAMNITZ, H.	BR	TCBA	.000	19	14	0	0	0	0	0	0	0	4	1	0	0	0
Bradenton Buckeyes			.252	1687	5328	748	1341	226	53	15	1718	674	654	403	228	161	67



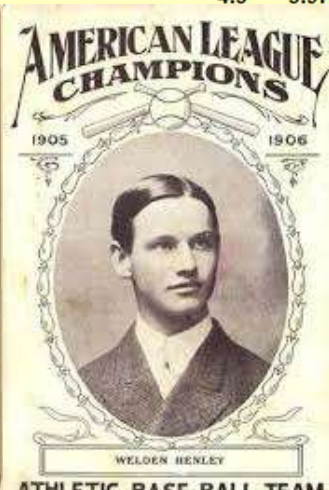
Nap LaJoie led the league with his .402 avg, 58 doubles and 125 runs. Jake Beckley had 104 RBI. Cy Seymour had 14 triples and 113 RBI. The Tabasco Kid Elberfeld (89 runs) and Homer Smoot (99 RBI) played important parts in the offense. Other than that quintet, most of the lineup was full of out-makers, although Woody Wood did hit 20 2b's with a team high 5 HR. Ernie Diehl's 75 walks and 29 SB's helped him score 73 times.



9 Pitchers	Tm	Lg	W	L	PCT	SV	ERA	G	GS	CG	SHO	QS	IP	H	R	ER	HR	SO	BB
Wood, W.	BR	TCBA	0	1	.000	24	1.61	27	0	0	0	0	28.0	31	8	5	0	4	6
HARPER, J.	BR	TCBA	22	14	.611	0	2.20	38	38	22	3	25	311.1	202	106	76	1	127	98
HENLEY, W.	BR	TCBA	24	13	.649	0	2.57	38	36	22	2	16	300.2	275	128	86	6	148	90
TAYLOR, D.	BR	TCBA	24	10	.706	0	2.65	39	38	25	6	22	316.0	257	116	93	3	150	89
AMES, R.	BR	TCBA	8	10	.444	1	3.09	26	14	7	2	7	119.1	100	59	41	1	97	34
WALKER, T.	BR	TCBA	18	7	.720	0	3.33	28	27	15	3	15	227.0	212	108	84	6	62	63
CAMNITZ, H.	BR	TCBA	0	1	.000	0	6.28	18	1	1	0	0	53.0	62	46	37	0	41	30
THATCHER, G.	BR	TCBA	0	1	.000	1	6.69	20	0	0	0	0	37.2	57	32	28	2	23	15
CASSADY, H.	BR	TCBA	1	0	1.000	0	9.26	5	0	0	0	0	11.2	21	17	12	1	3	7
Bradenton Buckeyes			97	57	.630	26	2.96	239	154	92	16	85	1404.2	1217	620	462	20	655	432

9 Pitchers	Tm	Lg	SUP/9	R/9	ERA	BF/9	BR/9	H/9	BB/9	SO/9	HR/9	ERPT	OBA	BF	BR	IBB	HB	WP	BK
Wood, W.	BR	TCBA	.0	2.57	1.61	38.3	11.9	10.0	1.9	1.3	.00	4.7	.277	119	37	0	0	0	1
HARPER, J.	BR	TCBA	3.7	3.06	2.20	36.6	9.1	5.8	2.7	3.7	.03	31.6	.181	1265	316	4	20	7	0
HENLEY, W.	BR	TCBA	6.0	3.83	2.57	37.9	11.1	8.2	2.7	4.4	.18	17.9	.241	1266	372	1	8	1	1
TAYLOR, D.	BR	TCBA	5.6	3.30	2.65	37.1	10.2	7.3	2.5	4.3	.09	16.2	.220	1301	358	0	12	10	1
AMES, R.	BR	TCBA	3.4	4.45	3.09	38.5	11.1	7.5	2.6	7.3	.08	.2	.224	510	147	0	13	3	0
WALKER, T.	BR	TCBA	4.9	4.28	3.33	38.2	11.2	8.4	2.5	2.5	.24	-5.6	.245	964	283	0	8	2	0
CAMNITZ, H.	BR	TCBA	.5	7.81	6.28	43.6	16.3	10.5	5.1	7.0	.00	-18.7	.284	257	96	0	4	1	0
THATCHER, G.	BR	TCBA	.0	7.65	6.69	45.2	17.0	13.6	3.3	5.5	.48	-15.0	.341	189	71	1	0	4	0
CASSADY, H.	BR	TCBA	.0	13.11	9.26	49.4	22.4	16.2	5.4	2.3	.77	-8.0	.389	64	29	0	1	0	0
Bradenton Buckeyes			4.5	3.97	2.96	38.0	10.9	7.8	2.7	4.2	.13	23.4	.230	5935	1709	6	66	28	3

Dummy Taylor and Weldon Henley led the staff with 24 wins apiece, followed by Jack Harper (22) and Tom Walker (18). Youngsters Red Ames (8) and Howie Camnitz gained some experience with the McCorkindale Division champions. Ancient Woody Wood notched 24 saves while posting an ERA of 1.61. The trio of Taylor, Harper and Henley each toiled over 300 innings on the mound and struck out over 100 batters.





ENTERING
Wilderness
Battlefield

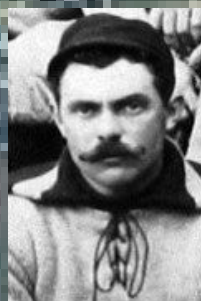
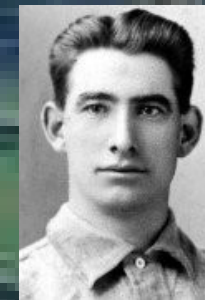




1-Frank Smith 2-Joe Cassidy 3-Dave Zearfoss 4-Rip Cannell
5-Peaches O'Neill 6-Charlie Loudenslager 7-Jesse Purnell 8-Art Bader

Wilderness Wraiths Draft Picks





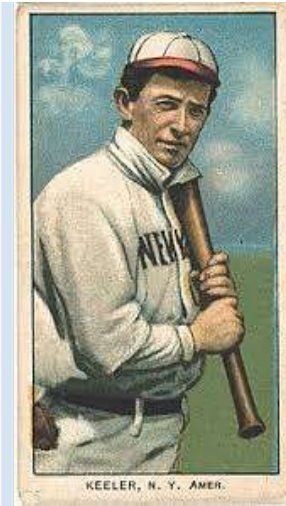
- 1-Charlie Babb, SS**
- 2-Joe Cassidy, 3B**
- 3-Willie Keeler, CF**
- 4-Roger Bresnahan, RF**
- 5-Joe Kelley, 1B**
- 6-Rip Cannell, LF**
- 7-Jack Burns, 2B**
- 8-Dave Zearfoss, C**
- 9-Joe McGinnity, P**

Wilderness Wraiths Opening Day Lineup

U-TCB905 - Wilderness Wraiths - Player Batting

22 Players	Tm	Lg	AVG	G	AB	R	H	2B	3B	HR	TB	RBI	SO	BB	ASB	SB	CS
KEELER, W.	WW	TCBA	.374	139	569	101	213	21	8	5	265	101	52	31	17	12	5
DEMONTREVILLE, G.	WW	TCBA	.333	5	3	0	1	0	0	0	1	0	2	0	0	0	0
BRESNAHAN, R.	WW	TCBA	.295	105	387	87	114	18	7	3	155	73	35	61	17	13	4
O'NEILL, P.	WW	TCBA	.286	12	21	1	6	0	0	0	6	0	2	3	0	0	0
BABB, C.	WW	TCBA	.281	139	569	83	160	22	2	0	186	43	50	53	35	24	11
CANNELL, R.	WW	TCBA	.273	147	560	44	153	10	3	0	169	85	80	34	16	11	5
KELLEY, J.	WW	TCBA	.265	121	456	53	121	22	19	0	181	78	42	53	14	11	3
SMITH, F.	WW	TCBA	.241	31	83	13	20	10	0	0	30	8	13	9	0	0	0
MCGINNITY, J.	WW	TCBA	.231	41	134	20	31	7	2	0	42	9	22	6	2	1	1
CASSIDY, J.	WW	TCBA	.223	143	606	87	135	18	20	0	193	49	92	22	16	11	5
PURNELL, J.	WW	TCBA	.222	14	9	5	2	0	0	0	2	0	3	1	0	0	0
Sibley, S.	WW	TCBA	.211	92	313	22	66	10	3	1	85	31	68	22	0	0	0
ZEARFOSS, D.	WW	TCBA	.207	147	507	50	105	19	0	0	124	39	66	62	0	0	0
BEVILLE, M.	WW	TCBA	.192	48	125	13	24	5	0	0	29	15	20	5	0	0	0
KRUEGER, O.	WW	TCBA	.177	88	260	31	46	6	0	0	52	22	35	39	4	3	1
WICKER, B.	WW	TCBA	.167	32	90	12	15	1	0	0	16	5	14	6	3	3	0
DONAHUE, R.	WW	TCBA	.153	34	72	8	11	1	0	0	12	4	12	8	2	2	0
BURNS, J.	WW	TCBA	.130	123	437	31	57	2	0	0	59	34	59	29	29	19	10
WOLFE, B.	WW	TCBA	.091	22	22	2	2	0	0	0	2	1	1	2	0	0	0
GARVIN, N.	WW	TCBA	.090	27	67	5	6	0	0	0	6	9	7	4	0	0	0
BADER, A.	WW	TCBA	.000	3	7	0	0	0	0	0	0	0	0	0	0	0	0
LOUDENSLAGER, C.	WW	TCBA	.000	1	1	0	0	0	0	0	0	0	0	0	0	0	0
Wilderness Wraiths			.243	1514	5298	668	1288	172	64	9	1615	606	675	450	155	110	45

2:41 PM | U-TCB905 | TCBA Origins 1904 MLB | TCBA Origins | Seitz Division | Wilderness Wraiths



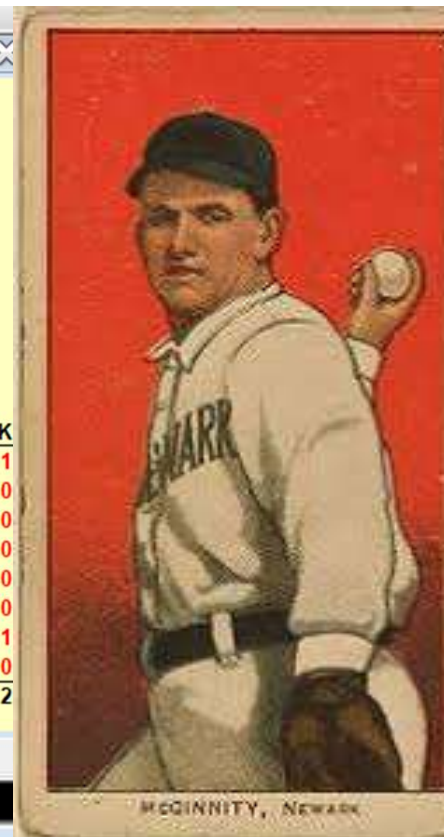
Wee Willie “Hit’em where they ain’t” Keeler hit an amazing .374 (2nd only to LaJoie) for the Wraiths. Keeler scored 101 runs and drove in 101 runs with 5 HR’s. Joe Cassidy (Lower left) was 2nd in the league with 20 triples (Joe Kelley (lower right) hit 19).

U-TCB905 - Wilderness Wraiths - Player Pitching

8 Pitchers	Tm	Lg	W	L	PCT	SV	ERA	G	GS	CG	SHO	QS	IP	H	R	ER	HR	SO	BB
MCGINNITY, J.	WW	TCBA	24	13	.649	0	1.39	41	41	34	5	33	362.0	218	93	56	2	155	76
SMITH, F.	WW	TCBA	15	8	.652	1	1.61	31	26	22	6	18	235.0	152	68	42	2	121	55
DONAHUE, R.	WW	TCBA	18	13	.581	0	2.72	34	24	18	2	11	224.2	211	101	68	0	107	55
BEVILLE, M.	WW	TCBA	0	2	.000	0	2.87	7	0	0	0	0	15.2	15	8	5	0	4	10
Sibley, S.	WW	TCBA	0	0	-	0	3.00	2	0	0	0	0	3.0	3	1	1	0	0	1
WICKER, B.	WW	TCBA	10	15	.400	1	3.02	31	28	21	1	9	247.0	219	125	83	4	138	76
GARVIN, N.	WW	TCBA	10	16	.385	0	4.41	27	23	16	0	7	204.0	191	126	100	9	105	97
WOLFE, B.	WW	TCBA	1	9	.100	1	5.22	22	12	5	0	2	98.1	148	78	57	1	32	19
Wilderness Wraiths			78	76	.506	3	2.67	195	154	116	14	80	1389.2	1157	600	412	18	662	389

8 Pitchers	Tm	Lg	SUP/9	R/9	ERA	BF/9	BR/9	H/9	BB/9	SO/9	HR/9	ERPT	OBA	BF	BR	IBB	HB	WP	BK
MCGINNITY, J.	WW	TCBA	4.1	2.31	1.39	34.9	7.7	5.4	1.8	3.9	.05	69.6	.171	1404	308	3	17	2	1
SMITH, F.	WW	TCBA	4.2	2.60	1.61	35.8	8.0	5.8	2.0	4.6	.08	39.5	.178	934	209	4	6	4	0
DONAHUE, R.	WW	TCBA	3.7	4.05	2.72	38.3	10.9	8.5	2.2	4.3	.00	9.9	.242	956	271	0	5	1	0
BEVILLE, M.	WW	TCBA	.0	4.60	2.87	41.4	12.6	8.6	4.0	2.3	.00	.4	.246	72	22	3	0	0	0
Sibley, S.	WW	TCBA	.0	3.00	3.00	36.0	12.0	9.0	3.0	.0	.00	.0	.273	12	4	0	0	0	0
WICKER, B.	WW	TCBA	4.2	4.55	3.02	38.6	10.9	8.0	2.5	5.0	.15	2.7	.237	1059	298	7	10	1	0
GARVIN, N.	WW	TCBA	4.4	5.56	4.41	40.4	13.1	8.4	4.2	4.6	.40	-29.2	.247	915	298	1	11	3	1
WOLFE, B.	WW	TCBA	2.3	7.14	5.22	42.5	15.4	13.5	1.6	2.9	.09	-22.9	.343	464	168	1	2	8	0
Wilderness Wraiths			3.9	3.89	2.67	37.7	10.2	7.5	2.4	4.3	.12	70.0	.223	5816	1578	19	51	19	2

2:40 PM | U-TCB905 | TCBA Origins 1904 MLB | TCBA Origins | Seitz Division | Wilderness Wraiths



Five Wraiths had double digit wins for their staff, but none had more than Iron Man Joe McGinnity (24-13) who led the LEAGUE with a 1.39 ERA. Frank Smith had six shutouts and a 1.61 ERA to finish 2nd in the League. Red Donahue had 18 wins



WELCOME TO
— The —
HISTORIC TOWN
of —

HYDE PARK, N.Y.



Hyde Park

Hyde Park Vitamen Draft Picks

1-Frank Schulte 2-Spike Shannon 3-Gus Dundon 4-Fred Applegate
5-Bill Lauterborn 6-John Butler 7-Lefty Herring 8-Tom Stankard



RESIDENCE OF FRANKLIN D. ROOSEVELT, HYDE PARK

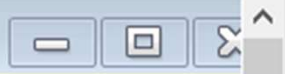
Hyde Park Vitamen Starting Lineup for Opening Day

1-Jimmy Barrett, CF
4-Bobby Wallace, SS
7-Billy Sullivan, C

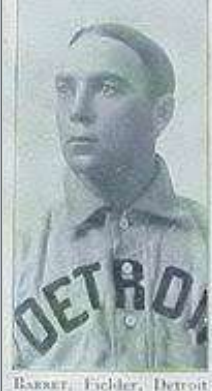
2-Bill Lauterborn 2B
5-Jimmy Sheckard, RF
8-Red Braun, 3B

3- Spike Shannon, LF
6-Tom Jones, 1B
9-Barney Peltz, P





26 Players	Tm	Lg	AVG	G	AB	R	H	2B	3B	HR	TB	RBI	SO	BB	ASB	SB	CS
DILLON, P.	SO	TCBA	.318	30	107	9	34	5	4	0	47	15	3	6	3	2	1
LAUTERBORN, B.	HP	TCBA	.293	51	184	21	54	6	0	0	60	17	13	4	6	2	4
SHANNON, S.	HP	TCBA	.262	134	489	82	128	8	3	1	145	38	50	56	48	35	13
WOLVERTON, H.	HP	TCBA	.258	117	422	53	109	18	5	0	137	50	34	21	13	8	5
BARRETT, J.	HP	TCBA	.258	153	589	89	152	9	6	0	173	50	66	67	25	18	7
WALLACE, B.	HP	TCBA	.252	141	564	64	142	29	4	0	179	76	49	37	24	18	6
SHECKARD, J.	HP	TCBA	.242	146	521	72	126	33	8	1	178	77	62	65	24	18	6
HYNES, P.	HP	TCBA	.238	15	42	6	10	0	1	0	12	4	9	1	0	0	0
SCHULTE, W.	HP	TCBA	.233	34	90	6	21	3	3	0	30	7	7	4	2	0	2
DUNDON, G.	HP	TCBA	.232	121	383	40	89	12	5	0	111	38	48	38	24	17	7
WARNER, J.	HP	TCBA	.231	82	242	31	56	6	1	3	73	26	28	20	6	5	1
SULLIVAN, B.	HP	TCBA	.223	77	264	20	59	16	0	0	75	26	37	10	4	3	1
ORTH, A.	HP	TCBA	.222	41	90	9	20	1	0	0	21	9	16	3	2	2	0
Braun, R.	HP	TCBA	.219	64	178	13	39	9	1	2	56	16	44	13	0	0	0
HILL, H.	HP	TCBA	.213	34	108	6	23	0	1	0	25	4	23	3	1	0	1
JONES, T.	HP	TCBA	.204	135	475	51	97	8	8	2	127	56	75	23	12	10	2
PELTY, B.	HP	TCBA	.161	44	124	8	20	1	0	0	21	9	23	0	3	1	2
STANKARD, T.	HP	TCBA	.143	10	21	2	3	0	0	0	3	0	4	0	0	0	0
POOLE, E.	HP	TCBA	.120	19	50	7	6	0	0	0	6	2	13	0	0	0	0
BUTLER, J.	HP	TCBA	.120	12	25	2	3	0	0	0	3	1	5	5	0	0	0
DUGGLEBY, B.	HP	TCBA	.111	29	72	4	8	4	0	0	12	5	13	3	0	0	0
DUNKLE, D.	HP	TCBA	.111	11	9	0	1	0	0	0	1	0	1	0	0	0	0
APPLEGATE, F.	HP	TCBA	.100	10	10	0	1	0	0	0	1	1	2	0	0	0	0
SIEVER, E.	HP	TCBA	.095	33	84	3	8	0	0	0	8	3	18	5	0	0	0
SCANLAN, D.	HP	TCBA	.075	33	40	0	3	0	0	0	3	0	3	2	0	0	0
HERRING, L.	HP	TCBA	.040	11	25	2	1	0	0	0	1	1	8	1	0	0	0
Hyde Park Vitamen			.233	1587	5208	600	1213	168	50	9	1508	531	654	387	197	139	58



U-TCB905 - Hyde Park Vitamen - Player Pitching

9 Pitchers	Tm	Lg	W	L	PCT	SV	ERA	G	GS	CG	SHO	QS	IP	H	R	ER	HR	SO	BB
Braun, R.	HP	TCBA	0	0	-	0	2.35	5	0	0	0	0	30.2	38	17	8	0	11	5
PELTY, B.	HP	TCBA	25	17	.595	0	2.83	44	38	28	4	24	327.2	292	131	103	1	161	86
DUGGLEBY, B.	HP	TCBA	8	16	.333	0	3.18	29	26	15	2	15	212.1	230	93	75	2	72	43
SIEVER, E.	HP	TCBA	9	17	.346	0	3.23	33	31	17	3	11	239.2	244	129	86	2	85	98
ORTH, A.	HP	TCBA	12	13	.480	1	3.33	37	27	19	1	13	230.0	253	109	85	1	82	32
SCANLAN, D.	HP	TCBA	5	12	.294	7	4.29	33	10	8	1	3	140.2	153	83	67	1	70	59
APPLEGATE, F.	HP	TCBA	0	3	.000	0	4.91	10	3	1	0	1	33.0	43	27	18	0	23	10
POOLE, E.	HP	TCBA	5	11	.313	1	4.98	19	17	9	0	6	133.2	168	92	74	3	65	53
DUNKLE, D.	HP	TCBA	0	1	.000	1	5.40	11	2	0	0	0	26.2	36	18	16	0	9	8
Hyde Park Vitamen			64	90	.416	10	3.48	221	154	97	11	73	1374.1	1457	699	532	10	578	394

9 Pitchers	Tm	Lg	SUP/9	R/9	ERA	BF/9	BR/9	H/9	BB/9	SO/9	HR/9	ERPT	OBA	BF	BR	IBB	HB	WP	BK
Braun, R.	HP	TCBA	.0	4.99	2.35	39.9	12.9	11.2	1.5	3.2	.00	2.6	.297	136	44	0	1	0	0
PELTY, B.	HP	TCBA	4.4	3.60	2.83	37.2	10.5	8.0	2.3	4.4	.03	10.6	.237	1353	384	1	7	6	0
DUGGLEBY, B.	HP	TCBA	3.1	3.94	3.18	38.6	11.9	9.7	1.7	3.1	.08	-1.4	.274	911	280	3	10	3	3
SIEVER, E.	HP	TCBA	3.9	4.84	3.23	40.2	13.3	9.2	3.7	3.2	.08	-2.9	.261	1070	355	0	13	7	0
ORTH, A.	HP	TCBA	3.6	4.27	3.33	38.7	11.9	9.9	1.2	3.2	.04	-5.2	.278	988	303	1	19	4	0
SCANLAN, D.	HP	TCBA	1.5	5.31	4.29	39.9	13.6	9.8	3.5	4.5	.06	-18.2	.281	624	213	4	5	5	1
APPLEGATE, F.	HP	TCBA	2.5	7.36	4.91	42.3	14.5	11.7	2.7	6.3	.00	-6.6	.305	155	53	0	0	1	0
POOLE, E.	HP	TCBA	4.8	6.19	4.98	41.9	15.1	11.3	3.2	4.4	.20	-27.6	.306	623	224	5	8	7	0
DUNKLE, D.	HP	TCBA	2.0	6.08	5.40	42.5	15.9	12.2	2.7	3.0	.00	-6.8	.316	126	47	0	3	0	0
Hyde Park Vitamen			3.5	4.58	3.48	39.2	12.5	9.5	2.5	3.8	.07	-55.3	.270	5986	1903	14	66	33	4

7:29 PM | U-TCB905 | TCBA Origins 1904 MLB | TCBA Origins | Mahley Division | Hyde Park Vitamen



Barney Peltly earned 25 of the 64 games won by Hyde Park this season, carrying most of the load and striking out 161 hitters in 327.2 innings of work and 44 games for a 2.83 ERA. Al Orth was the only other double-digit winner this year while Doc Scanlan recorded 7 saves for the 4th place Vitamen.

MIMOSA



HAPPY KYNE
&
THE MIRTH MAKERS



Mimosa Mirthmakers Draft Picks

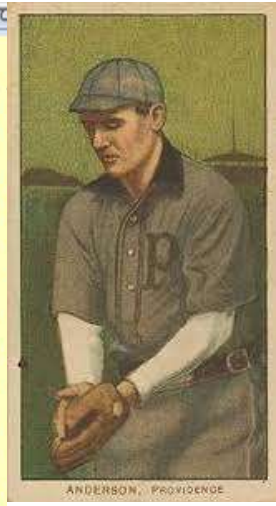
- | | |
|------------------|-------------------|
| 1-George Stovall | 2-Charley O'Leary |
| 3-Doc Marshall | 4-Patsy Donovan |
| 5-Del Mason | 6-Claude Berry |
| 7-Jim O'Rourke | |

- 1-Fred Clarke, LF
- 2-Claude Ritchey, 2B
- 3-John Anderson, 1B
- 4-Cozy Dolan, RF
- 5-Billy Coughlin, 3B
- 6-Lew Ritter, C
- 7-Patsy Donovan, CF
- 8-Charley O'Leary, SS
- 9-Jack Powell, P

Mimosa Mirthmaker Starting Lineup for Opening Day



27 Players	Tm	Lg	AVG	G	AB	R	H	2B	3B	HR	TB	RBI	SO	BB	ASB	SB	CS
STOVALL, G.	MI	TCBA	.376	52	197	34	74	15	3	2	101	48	17	11	7	5	2
CLARKE, F.	MI	TCBA	.297	75	293	38	87	12	8	0	115	25	27	19	13	11	2
ANDERSON, J.	MI	TCBA	.284	141	553	87	157	34	13	1	220	73	46	44	16	14	2
MARSHALL, D.	MI	TCBA	.273	20	33	2	9	2	0	0	11	2	5	2	1	1	0
GESSLER, D.	MI	TCBA	.268	96	340	58	91	16	3	2	119	33	38	39	12	8	4
COUGHLIN, B.	MI	TCBA	.264	126	485	44	128	28	2	0	160	75	40	15	15	8	7
SLAGLE, J.	MI	TCBA	.256	112	454	69	116	16	9	1	153	59	53	27	20	15	5
SMITH, H.	MI	TCBA	.255	43	141	16	36	3	2	0	43	11	26	20	5	5	0
CARISCH, F.	MI	TCBA	.253	25	83	9	21	1	2	0	26	8	10	7	1	1	0
RITTER, L.	MI	TCBA	.251	104	386	44	97	11	0	0	108	40	56	23	28	22	6
RITCHEY, C.	MI	TCBA	.248	144	549	95	136	19	10	0	175	49	61	78	18	14	4
DONOVAN, P.	MI	TCBA	.241	135	452	36	109	5	0	0	114	45	81	34	19	14	5
DOLAN, C.	BS	TCBA	.238	7	21	1	5	1	0	0	6	3	1	3	1	0	1
Smith, L.	MI	TCBA	.232	51	138	13	32	8	1	0	42	18	29	12	0	0	0
POWELL, J.	MI	TCBA	.220	44	118	8	26	4	2	0	34	15	24	6	0	0	0
SUDHOFF, W.	MI	TCBA	.186	23	70	3	13	1	0	0	14	7	8	0	0	0	0
OSTEEN, C.	MI	TCBA	.173	27	75	10	13	2	2	1	22	7	15	0	0	0	0
O'LEARY, C.	MI	TCBA	.172	140	482	34	83	6	4	0	97	34	68	35	4	3	1
DOUGLASS, K.	MI	TCBA	.154	6	13	0	2	0	0	0	2	3	2	0	0	0	0
PATTEN, C.	MI	TCBA	.150	39	107	9	16	2	0	0	18	4	19	3	0	0	0
MCPHERSON, J.	MI	TCBA	.125	25	64	7	8	0	0	0	8	1	14	2	0	0	0
BERRY, C.	MI	TCBA	.125	3	8	1	1	0	0	0	1	0	1	1	0	0	0
TOWNSEND, J.	MI	TCBA	.103	36	87	6	9	2	0	1	14	5	15	1	0	0	0
NILL, R.	MI	TCBA	.100	11	30	2	3	0	1	0	5	0	5	0	0	0	0
MASON, D.	MI	TCBA	.056	15	18	1	1	0	0	0	1	0	4	1	0	0	0
MORGAN, C.	MI	TCBA	.053	14	19	0	1	0	0	0	1	1	5	0	0	0	0
O'ROURKE, J.	MI	TCBA	.000	7	6	0	0	0	0	0	0	1	1	0	0	0	0
Mimosa Mirthmakers			.244	1521	5222	627	1274	188	62	8	1610	567	671	383	160	121	39



Honest John Anderson and Billy Coughlin led the offense. John led in hits, doubles and triples while Billy led in RBI. Lew Ritter stole 22 bases and Claude Ritchey had 95 runs scored.



9 Pitchers	Tm	Lg	W	L	PCT	SV	ERA	G	GS	CG	SHO	QS	IP	H	R	ER	HR	SO	BB
POWELL, J.	MI	TCBA	17	21	.447	0	2.72	44	40	32	1	17	337.2	276	148	102	18	143	90
MORGAN, C.	MI	TCBA	2	5	.286	0	3.81	14	3	2	0	0	56.2	56	31	24	2	26	14
PATTEN, C.	MI	TCBA	13	22	.371	1	4.05	39	35	26	1	13	293.2	355	194	132	3	147	71
MCPHERSON, J.	MI	TCBA	6	12	.333	0	4.42	25	19	14	0	6	167.0	186	99	82	2	58	76
TOWNSEND, J.	MI	TCBA	6	22	.214	0	4.46	36	30	22	1	8	242.1	294	177	120	3	134	121
Smith, L.	MI	TCBA	1	1	.500	1	4.91	7	0	0	0	0	7.1	11	4	4	0	1	7
MARSHALL, D.	MI	TCBA	0	1	.000	0	4.96	6	0	0	0	0	16.1	23	14	9	0	5	7
SUDHOFF, W.	MI	TCBA	6	13	.316	1	5.40	23	20	14	0	2	175.0	249	144	105	7	74	63
MASON, D.	MI	TCBA	1	4	.200	1	6.44	15	6	4	0	1	58.2	79	54	42	4	28	41
Mimosa Mirthmakers			52	101	.340	4	4.12	209	153	114	3	47	1354.2	1529	865	620	39	616	490

9 Pitchers	Tm	Lg	SUP/9	R/9	ERA	BF/9	BR/9	H/9	BB/9	SO/9	HR/9	ERPT	OBA	BF	BR	IBB	HB	WP	BK
POWELL, J.	MI	TCBA	3.8	3.94	2.72	37.0	10.0	7.4	2.2	3.8	.48	15.1	.222	1390	374	7	15	6	0
MORGAN, C.	MI	TCBA	1.6	4.92	3.81	39.1	11.3	8.9	1.9	4.1	.32	-4.3	.257	246	71	2	3	1	0
PATTEN, C.	MI	TCBA	4.3	5.95	4.05	40.6	13.5	10.9	2.1	4.5	.09	-30.1	.295	1324	442	1	17	2	2
MCPHERSON, J.	MI	TCBA	4.2	5.34	4.42	41.3	14.7	10.0	4.0	3.1	.11	-24.1	.282	766	272	1	11	4	0
TOWNSEND, J.	MI	TCBA	3.5	6.57	4.46	42.4	15.7	10.9	4.5	5.0	.11	-36.0	.296	1142	423	0	8	7	1
Smith, L.	MI	TCBA	.0	4.91	4.91	49.1	18.4	13.5	4.9	1.2	.00	-1.5	.355	40	15	3	0	0	0
MARSHALL, D.	MI	TCBA	.0	7.71	4.96	43.5	16.0	12.7	3.3	2.8	.00	-3.3	.329	79	29	1	0	0	0
SUDHOFF, W.	MI	TCBA	4.7	7.41	5.40	43.5	16.5	12.8	3.2	3.8	.36	-44.3	.331	846	321	1	10	2	0
MASON, D.	MI	TCBA	3.7	8.28	6.44	46.3	19.3	12.1	6.3	4.3	.61	-21.7	.315	302	126	0	6	2	0
Mimosa Mirthmakers			3.9	5.75	4.12	40.8	13.8	10.2	3.1	4.1	.26	-150.2	.282	6135	2073	16	70	24	3



Jack Powell carried the bulk of the Mirthmaker load on the mound, toiling 337.2 innings to win 17 of their 52 games while posting a 2.72 ERA. Casey Patten (13 wins) led the team with 147 strikeouts

MOUNTAINEERS



TURIN



1-Harry Lumley 2- Chick Robitaille 3-Highball Wilson 4- Harry Ostdiek
5- Joe Koukalik 6-John Barthold 7-Andy Sullivan 8-Bill Carney

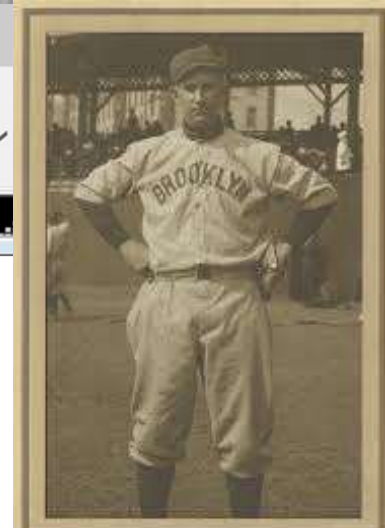
Turin Mountaineers Draft Picks

TURIN MOUNTAINEERS OPENING DAY STARTING LINEUP



- 1-Harry Lumley, CF
- 2-Bill Bradley, 3B
- 3-Emmet Heidrick, LF
- 4-Harry Ostdiek, C
- 5-John Farrell, 2B
- 6-Eddie Plank, P
- 7-Mike Heydon, 1B
- 8-Wid Conroy, SS
- 9-Jimmy Sebring, RF

26 Players	Tm	Lg	AVG	G	AB	R	H	2B	3B	HR	TB	RBI	SO	BB	ASB	SB	CS
CASE, C.	TU	TCBA	.327	30	49	5	16	0	1	0	18	3	7	5	0	0	0
BRADLEY, B.	TU	TCBA	.307	145	592	98	182	19	12	6	243	79	54	43	32	28	4
WILSON, H.	TU	TCBA	.302	29	53	8	16	12	0	0	28	9	4	6	0	0	0
LUMLEY, H.	TU	TCBA	.292	143	593	114	173	18	11	16	261	66	46	42	44	33	11
LEE, W.	TU	TCBA	.286	17	7	1	2	0	0	0	2	1	1	0	0	0	0
MCCARTHY, J.	TU	TCBA	.276	90	283	31	78	8	1	0	88	38	34	17	11	9	2
TANNEHILL, J.	TU	TCBA	.267	42	131	22	35	5	7	0	54	20	21	15	2	1	1
ROBITAILLE, C.	TU	TCBA	.263	18	19	1	5	0	0	0	5	0	3	0	0	0	0
PLANK, E.	TU	TCBA	.254	46	134	13	34	5	2	0	43	8	22	1	1	1	0
HEIDRICK, E.	TU	TCBA	.251	131	517	50	130	10	6	0	152	66	42	11	43	38	5
FARRELL, J.	TU	TCBA	.247	139	498	55	123	28	2	0	155	74	55	49	18	10	8
CONROY, W.	TU	TCBA	.246	140	483	73	119	24	7	0	157	62	64	42	34	25	9
SEBRING, J.	TU	TCBA	.246	127	476	57	117	23	6	0	152	54	50	32	18	13	5
LACHANCE, C.	TU	TCBA	.222	116	302	32	67	11	3	0	84	27	41	29	8	4	4
HEYDON, M.	TU	TCBA	.211	112	318	31	67	39	0	0	106	31	62	38	0	0	0
MCLEAN, L.	TU	TCBA	.200	24	30	1	6	1	0	0	7	3	8	3	1	0	1
KOUKALIK, J.	TU	TCBA	.200	7	5	0	1	0	0	0	1	0	1	0	0	0	0
HOFMAN, S.	TU	TCBA	.192	9	26	5	5	0	0	0	5	1	2	2	2	1	1
MCGUIRE, D.	TU	TCBA	.179	111	313	35	56	8	2	0	68	25	56	24	0	0	0
O'NEILL, M.	TU	TCBA	.176	36	108	9	19	8	2	0	31	17	22	9	0	0	0
OSTDIEK, H.	TU	TCBA	.174	59	167	23	29	1	9	0	48	12	31	26	3	2	1
Pio, P.	TU	TCBA	.173	61	139	8	24	2	1	1	31	11	33	9	0	0	0
FAIRBANK, J.	TU	TCBA	.167	5	6	1	1	0	0	0	1	1	2	0	0	0	0
SULLIVAN, A.	TU	TCBA	.111	47	27	5	3	0	0	0	3	1	4	5	0	0	0
BARTHOLD, J.	TU	TCBA	.000	15	11	1	0	0	0	0	0	1	4	0	0	0	0
CARNEY, B.	TU	TCBA	.000	1	1	0	0	0	0	0	0	0	0	0	0	0	0
Turin Mountaineers			.247	1700	5288	679	1308	222	72	23	1743	610	669	408	217	165	52



2:43 PM

U-TCB905 | TCBA Origins 1904 MLB | TCBA Origins | Seitz Division | Turin Mountaineers

Harry Lumley led the league with 16 home runs and finished 2nd with 114 runs. Bill Bradley's .307 average led the team, as did his 79 RBI. Bill scored 98 runs had had 12 triples.

12 Pitchers	Tm	Lg	W	L	PCT	SV	ERA	G	GS	CG	SHO	QS	IP	H	R	ER	HR	SO	BB
ROBITAILLE, C.	TU	TCBA	5	2	.714	4	1.44	18	5	4	0	4	68.2	42	21	11	0	42	26
TANNEHILL, J.	TU	TCBA	26	11	.703	1	1.91	42	40	27	8	31	330.1	229	88	70	5	160	51
CASE, C.	TU	TCBA	12	9	.571	2	1.94	30	18	14	2	12	166.2	128	53	36	1	48	33
KOUKALIK, J.	TU	TCBA	2	0	1.000	1	2.00	7	1	1	0	0	18.0	15	11	4	1	4	8
PLANK, E.	TU	TCBA	21	21	.500	0	2.43	46	46	25	4	27	363.0	301	136	98	3	190	107
BARTHOLD, J.	TU	TCBA	2	0	1.000	1	2.45	15	0	0	0	0	33.0	28	9	9	0	25	14
O'NEILL, M.	TU	TCBA	13	13	.500	2	2.89	34	28	18	4	13	236.2	199	102	76	6	65	62
WILSON, H.	TU	TCBA	5	7	.417	1	4.93	29	13	5	1	4	104.0	143	69	57	1	54	21
Pio, P.	TU	TCBA	0	1	.000	0	5.40	6	1	0	0	0	18.1	23	14	11	0	7	6
FAIRBANK, J.	TU	TCBA	1	1	.500	0	6.38	5	1	1	0	0	18.1	24	14	13	0	5	10
LEE, W.	TU	TCBA	1	1	.500	1	8.14	16	1	1	0	0	24.1	32	22	22	0	4	14
HEYDON, M.	TU	TCBA	0	0	-	0	9.00	1	0	0	0	0	1.0	1	1	1	0	0	0
Turin Mountaineers			88	66	.571	13	2.66	249	153	96	19	91	1382.1	1165	540	408	17	604	352

12 Pitchers	Tm	Lg	SUP/9	R/9	ERA	BF/9	BR/9	H/9	BB/9	SO/9	HR/9	ERPT	OBA	BF	BR	IBB	HB	WP	BK
ROBITAILLE, C.	TU	TCBA	2.5	2.75	1.44	36.6	8.8	5.5	3.1	5.5	.00	12.8	.174	279	67	2	1	1	0
TANNEHILL, J.	TU	TCBA	4.8	2.40	1.91	34.8	7.8	6.2	1.2	4.4	.14	44.6	.192	1279	287	6	13	4	0
CASE, C.	TU	TCBA	3.6	2.86	1.94	36.6	9.0	6.9	1.8	2.6	.05	21.8	.206	677	167	0	6	3	2
KOUKALIK, J.	TU	TCBA	3.0	5.50	2.00	38.5	11.5	7.5	4.0	2.0	.50	2.2	.231	77	23	0	0	0	0
PLANK, E.	TU	TCBA	3.2	3.37	2.43	37.4	10.1	7.5	2.5	4.7	.07	27.9	.222	1509	408	7	7	5	0
BARTHOLD, J.	TU	TCBA	.0	2.45	2.45	37.6	11.5	7.6	3.8	6.8	.00	2.4	.228	138	42	0	0	1	0
O'NEILL, M.	TU	TCBA	4.5	3.88	2.89	37.6	10.4	7.6	2.3	2.5	.23	6.1	.223	990	274	2	15	1	0
WILSON, H.	TU	TCBA	6.3	5.97	4.93	41.4	15.0	12.4	1.7	4.7	.09	-20.9	.326	478	173	1	10	3	0
Pio, P.	TU	TCBA	2.0	6.87	5.40	41.7	14.7	11.3	2.9	3.4	.00	-4.6	.303	85	30	0	1	0	0
FAIRBANK, J.	TU	TCBA	1.5	6.87	6.38	43.7	17.2	11.8	4.9	2.5	.00	-6.6	.308	89	35	0	1	0	0
LEE, W.	TU	TCBA	.4	8.14	8.14	42.9	17.4	11.8	5.2	1.5	.00	-13.6	.320	116	47	0	1	0	0
HEYDON, M.	TU	TCBA	.0	9.00	9.00	36.0	9.0	9.0	.0	.0	.00	-.7	.250	4	1	0	0	0	0
Turin Mountaineers			3.9	3.52	2.66	37.2	10.1	7.6	2.2	3.9	.11	71.4	.225	5721	1554	18	55	18	2



Jesse Tannehill finished 26-11 with a 1.91 ERA and 8 shutouts to lead the staff. Joining him in the 20-win circle was fellow southpaw Eddie Plank (21-21, 2.43) who started 46 games and pitched 363 innings and striking out 190 opponents

WRETFORD

PROFITABILITY

WRETFORD



HIGHLANDERS



Hereford Highlanders Draft Picks

1-Johnny Lush 2-Red Kleinow 3-Mike McCormick
4-Ernie Groth 5-Tom Barry 6-Simmy Murch 7-Bull Smith



**Starting Lineup
Opening Day for
Hereford
Highlanders**



**1-Sammy Strang, SS 2-Jesse Burkett, RF 3-Harry Davis, 1B 4-Harry Bay, CF 5-Pat Moran, C
6-Ollie Pickering, LF 7--Barry McCormick, 2B 8-Mike McCormick, 3B 9-Vic Willis, P**

24 Players	Tm	Lg	AVG	G	AB	R	H	2B	3B	HR	TB	RBI	SO	BB	ASB	SB	CS
DAVIS, H.	HH	TCBA	.348	92	351	57	122	22	4	12	188	81	17	18	7	6	1
LUSH, J.	HH	TCBA	.326	105	340	54	111	39	3	2	162	48	20	30	11	10	1
DUNN, J.	HH	TCBA	.320	62	147	23	47	9	0	0	56	23	12	13	13	11	2
BURKETT, J.	HH	TCBA	.298	148	608	106	181	28	10	3	238	50	65	59	14	7	7
PHELPS, E.	HH	TCBA	.277	81	289	29	80	8	4	0	96	29	40	14	2	2	0
PICKERING, O.	HH	TCBA	.242	150	557	57	135	14	6	0	161	57	82	56	20	16	4
STRANG, S.	HH	TCBA	.238	72	273	53	65	12	0	0	77	22	45	47	14	9	5
MORAN, P.	HH	TCBA	.238	79	311	26	74	10	3	1	93	32	38	16	10	7	3
BARRY, S.	HH	TCBA	.237	124	469	57	111	12	1	0	125	43	57	32	18	14	4
BAY, H.	HH	TCBA	.229	127	519	69	119	22	10	4	173	62	77	51	40	27	13
RHOADS, B.	HH	TCBA	.219	24	73	4	16	3	0	0	19	9	10	2	0	0	0
MCCORMICK, B.	HH	TCBA	.217	87	254	19	55	8	1	0	65	24	35	17	6	3	3
MURCH, S.	HH	TCBA	.211	9	19	0	4	0	0	0	4	1	3	3	0	0	0
Lyon, D.	HH	TCBA	.197	78	254	19	50	10	2	2	70	29	60	15	0	0	0
MCCORMICK, M.	HH	TCBA	.193	125	419	38	81	6	3	0	93	27	61	42	22	15	7
GRIFFITH, C.	HH	TCBA	.182	19	33	5	6	1	0	0	7	0	7	6	0	0	0
KLEINOW, R.	HH	TCBA	.177	37	96	5	17	1	0	0	18	10	16	5	6	5	1
GROTH, E.	HH	TCBA	.174	16	23	0	4	0	0	0	4	0	6	0	0	0	0
JONES, C.	HH	TCBA	.167	6	12	2	2	1	0	0	3	3	5	3	0	0	0
BARRY, T.	HH	TCBA	.167	12	6	1	1	0	0	0	1	0	0	0	0	0	0
MOORE, E.	HH	TCBA	.161	30	87	7	14	4	0	0	18	13	14	7	2	1	1
WILLIS, V.	HH	TCBA	.158	38	114	12	18	1	0	0	19	10	18	12	0	0	0
GIBSON, N.	HH	TCBA	.156	32	90	9	14	0	0	0	14	8	18	14	0	0	0
SMITH, B.	HH	TCBA	.105	9	19	2	2	0	0	0	2	0	5	0	0	0	0
Hereford Highlande			.248	1562	5363	654	1329	211	47	24	1706	581	711	462	185	133	52

Harry Davis had 81 RBI in just 92 games, hitting 12 home runs to lead the offense (.348). Johnny Lush had 39 doubles (.326) in 105 games while Jesse Burkett (.298) had 181 hits and 59 walks to score 106 runs for the Highlanders. Harry Bay stole 27 bases.



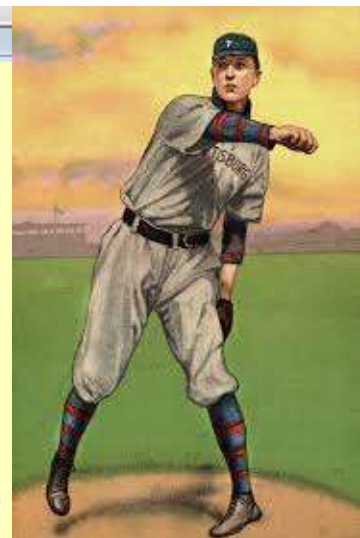
1904 MLB | TCBA Origins | Seitz Division | Hereford Highlanders

Davis (far left)
Lush (near left) Burkett (right)



10 Pitchers	Tm	Lg	W	L	PCT	SV	ERA	G	GS	CG	SHO	QS	IP	H	R	ER	HR	SO	BB
LUSH, J.	HH	TCBA	1	1	.500	0	2.19	5	0	0	0	0	12.1	15	8	3	0	9	5
MOORE, E.	HH	TCBA	11	16	.407	0	2.70	30	28	22	1	12	243.1	205	113	73	4	163	58
RHOADS, B.	HH	TCBA	10	11	.476	0	2.78	24	23	18	2	11	197.2	205	100	61	2	99	55
GIBSON, N.	HH	TCBA	12	16	.429	0	3.17	32	31	21	1	13	269.2	229	131	95	3	142	103
GRIFFITH, C.	HH	TCBA	6	8	.429	3	3.46	19	13	11	1	7	109.1	122	49	42	0	37	15
KLEINOW, R.	HH	TCBA	3	2	.600	0	3.82	9	3	3	0	1	37.2	44	22	16	1	12	11
WILLIS, V.	HH	TCBA	16	20	.444	0	3.86	38	38	28	1	14	321.2	324	168	138	4	212	96
GROTH, E.	HH	TCBA	3	5	.375	0	5.33	16	6	6	0	2	76.0	88	56	45	4	56	35
Lyon, D.	HH	TCBA	4	6	.400	0	5.70	15	10	6	0	2	83.2	114	67	53	0	31	25
BARRY, T.	HH	TCBA	0	3	.000	2	7.67	12	2	1	0	0	27.0	39	39	23	0	20	20
Hereford Highlanders			66	88	.429	5	3.58	200	154	116	6	62	1378.1	1385	753	549	18	781	423

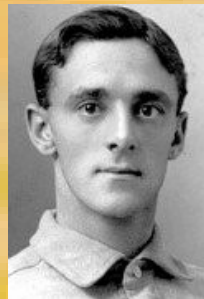
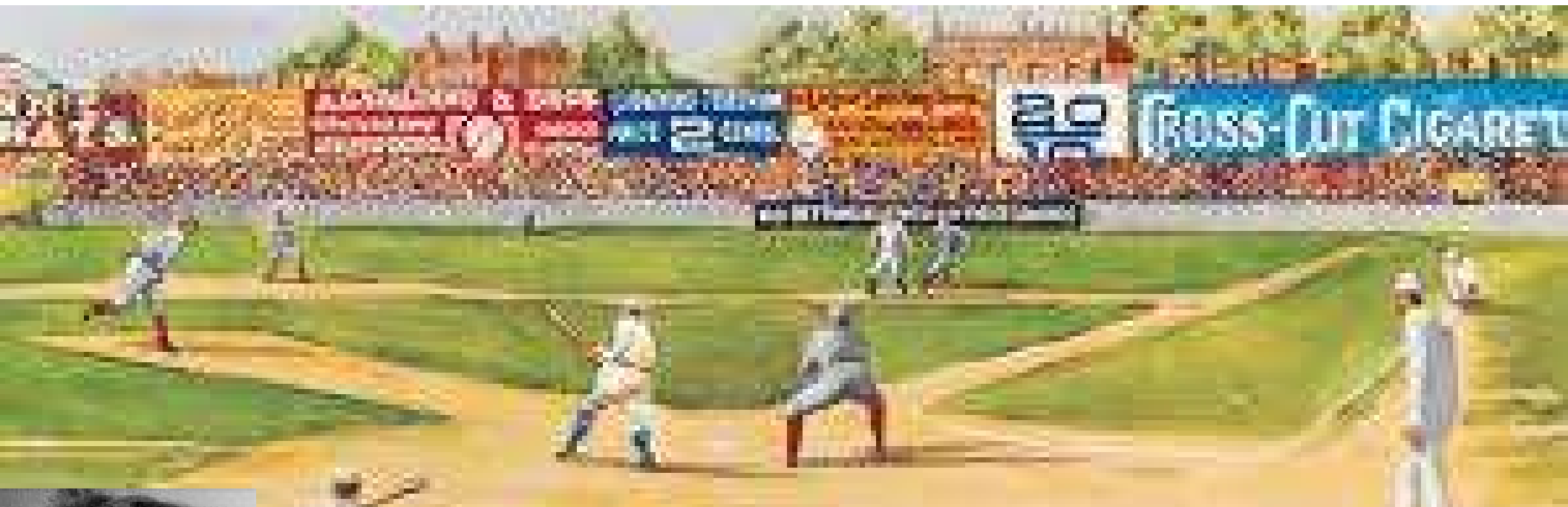
10 Pitchers	Tm	Lg	SUP/9	R/9	ERA	BF/9	BR/9	H/9	BB/9	SO/9	HR/9	ERPT	OBA	BF	BR	IBB	HB	WP	BK
LUSH, J.	HH	TCBA	.0	5.84	2.19	40.9	13.9	10.9	2.9	6.6	.00	1.3	.306	56	19	1	0	1	0
MOORE, E.	HH	TCBA	4.9	4.18	2.70	37.5	9.9	7.6	2.1	6.0	.15	11.5	.221	1013	267	2	6	6	0
RHOADS, B.	HH	TCBA	4.2	4.55	2.78	39.5	12.1	9.3	2.4	4.5	.09	7.6	.263	867	266	3	9	7	0
GIBSON, N.	HH	TCBA	3.7	4.37	3.17	38.7	11.3	7.6	3.4	4.7	.10	-1.4	.227	1161	338	1	7	4	0
GRIFFITH, C.	HH	TCBA	3.2	4.03	3.46	38.2	11.6	10.0	1.1	3.0	.00	-4.1	.283	464	141	2	6	3	0
KLEINOW, R.	HH	TCBA	1.4	5.26	3.82	40.6	13.4	10.5	2.6	2.9	.24	-2.9	.289	170	56	0	1	0	0
WILLIS, V.	HH	TCBA	4.4	4.70	3.86	39.4	12.0	9.1	2.7	5.9	.11	-26.4	.256	1408	429	1	10	10	0
GROTH, E.	HH	TCBA	2.6	6.63	5.33	41.8	14.9	10.4	4.1	6.6	.47	-18.6	.288	353	126	0	3	1	0
Lyon, D.	HH	TCBA	4.6	7.21	5.70	43.0	15.2	12.3	2.7	3.3	.00	-24.0	.314	400	141	0	2	0	0
BARRY, T.	HH	TCBA	1.3	13.00	7.67	51.0	21.3	13.0	6.7	6.7	.00	-13.6	.322	153	64	0	5	0	1
Hereford Highlanders			4.0	4.92	3.58	39.5	12.1	9.0	2.7	5.1	.12	-70.6	.256	6045	1847	10	49	32	1



Vic Willis was the shining light on the Highlander mound, winning 16 of their 66 games, completing 28 of his 38 starts, and striking out 212 hitters in 321.2 innings of work. Bob Rhoads, Earl Moore and Norwood Gibson also had double digit victories.



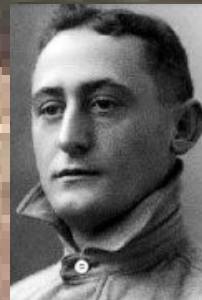
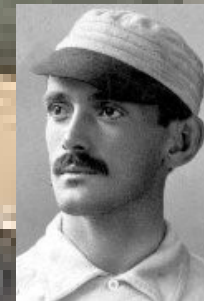
CLEVELAND NAPS



Cleveland Naps Draft Picks

1-Admiral Schlei 2-Fred Odwell 3-Emil Batch 4-Joe Stanley
5-Fred Raymer 6-Joe Stewart 7-Dan Brouthers

**Opening Day
Starting Lineup
CLEVELAND NAPS**



- 1-Charlie Hemphill, CF**
- 2-Fred Tenney, 1B**
- 3-Phil Geier, LF**
- 4-Fred Odwell, RF**
- 5-Johnny Evers, 2B**
- 6-Harry Steinfeldt, 3B**
- 7-Admiral Schlei, C**
- 8-Terry Turner, SS**
- 9-Christy Mathewson, P**

25 Players	Tm	Lg	AVG	G	AB	R	H	2B	3B	HR	TB	RBI	SO	BB	ASB	SB	CS
Hobbs, R.	CL	TCBA	.314	83	255	29	80	14	7	5	123	39	47	13	0	0	0
PFIESTER, J.	CL	TCBA	.313	24	32	6	10	1	5	0	21	6	5	5	0	0	0
TENNEY, F.	CL	TCBA	.283	142	565	90	160	16	5	0	186	40	51	46	31	21	10
ODWELL, F.	CL	TCBA	.281	130	455	55	128	20	7	0	162	73	44	27	40	22	18
EVERS, J.	CL	TCBA	.251	147	521	72	131	16	9	0	165	72	57	41	43	32	11
STEINFELDT, H.	CL	TCBA	.247	101	340	43	84	19	3	0	109	42	42	37	21	13	8
HILL, H.	CL	TCBA	.227	38	97	10	22	1	0	2	29	16	9	2	3	3	0
BATCH, E.	CL	TCBA	.227	26	75	2	17	1	2	0	22	7	5	3	5	2	3
TURNER, T.	CL	TCBA	.223	146	529	54	118	10	4	0	136	52	66	24	6	4	2
TAYLOR, J.	CL	TCBA	.220	43	127	13	28	2	3	2	42	18	22	5	2	2	0
GEIER, P.	CL	TCBA	.215	150	601	74	129	17	3	0	152	45	71	49	27	14	13
SCHLEI, A.	CL	TCBA	.209	103	383	46	80	9	3	0	95	34	58	21	17	11	6
HEMPHILL, C.	CL	TCBA	.209	126	436	51	91	10	1	3	112	35	34	41	26	17	9
MATHEWSON, C.	CL	TCBA	.208	45	130	7	27	4	4	0	39	13	21	7	3	1	2
RAYMER, F.	CL	TCBA	.201	54	139	21	28	4	0	0	32	15	18	8	6	6	0
BERNHARD, B.	CL	TCBA	.195	40	113	11	22	6	1	0	30	4	18	4	0	0	0
KAHOE, M.	CL	TCBA	.176	42	102	12	18	2	1	0	22	9	11	7	0	0	0
HESS, O.	CL	TCBA	.169	30	59	2	10	4	1	0	16	4	8	1	0	0	0
CARNEY, P.	CL	TCBA	.169	50	130	13	22	2	1	0	26	12	18	19	3	2	1
BERGEN, B.	CL	TCBA	.169	60	130	10	22	0	0	0	22	6	23	7	1	1	0
LONG, H.	CL	TCBA	.161	19	31	2	5	0	0	0	5	1	3	0	0	0	0
STANLEY, J.	CL	TCBA	.118	11	17	1	2	0	0	0	2	3	1	0	0	0	0
BROUHERS, D.	CL	TCBA	.105	15	19	0	2	0	0	0	2	0	2	0	0	0	0
WRIGHT, C.	CL	TCBA	.000	19	5	0	0	0	0	0	0	0	1	0	0	0	0
STEWART, J.	CL	TCBA	.000	19	4	0	0	0	0	0	0	0	1	0	0	0	0
Cleveland Naps			.233	1663	5295	624	1236	158	60	12	1550	546	636	367	234	151	83



Roy Hobbs led the team with 5 HR's and hit a club high .314 and appeared in over half the team's games. Despite an 84-70 record the Naps had to settle for 4th place in a rugged Division Fred Tenny had 90 runs. Fred Odwell had 73 RBI to lead the club

10 Pitchers	Tm	Lg	W	L	PCT	SV	ERA	G	GS	CG	SHO	QS	IP	H	R	ER	HR	SO	BB
RAYMER, F.	CL	TCBA	0	0	-	0	.00	1	0	0	0	0	.1	0	0	0	0	0	0
CARNEY, P.	CL	TCBA	2	0	1.000	0	1.59	3	0	0	0	0	11.1	8	2	2	0	5	5
TAYLOR, J.	CL	TCBA	23	16	.590	0	1.75	43	42	33	6	30	360.1	249	100	70	2	110	63
HESS, O.	CL	TCBA	12	11	.522	1	2.29	30	19	14	4	13	181.0	122	56	46	0	87	44
MATHEWSON, C.	CL	TCBA	21	18	.538	1	2.49	45	43	31	3	24	369.0	295	135	102	8	227	70
BERNHARD, B.	CL	TCBA	21	14	.600	0	2.63	40	39	24	5	25	332.1	268	115	97	2	151	75
WRIGHT, C.	CL	TCBA	0	1	.000	1	3.72	19	2	0	0	2	29.0	41	15	12	0	26	13
PFIESTER, J.	CL	TCBA	5	8	.385	0	3.82	24	9	6	2	4	103.2	122	70	44	1	44	35
STEWART, J.	CL	TCBA	0	2	.000	0	4.72	19	0	0	0	0	26.2	46	30	14	0	6	13
Hobbs, R.	CL	TCBA	0	0	-	0	5.40	4	0	0	0	0	5.0	9	3	3	0	0	3
Cleveland Naps			84	70	.545	3	2.47	228	154	108	20	98	1418.2	1160	526	390	13	656	321



TAYLOR, P. Chicago, N



MATHEWSON, N. Y. NATL



BERNHARD, NASHVILLE

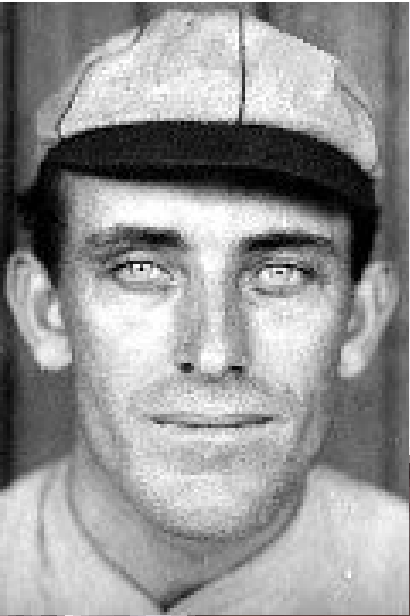
The trio of Jack Taylor, Christy Mathewson and Bill Bernhard combined to win 65 games while pitching over 1,000 innings. The team completed 70% of their starts, posting a sparkling 2.47 ERA. Mathewson struck out 227 opponents. Otto Hess won 12 times in his 19 starts and threw 181 innings. Young Jack Pfiester also added 100+ innings, winning 5 games



Cleveland

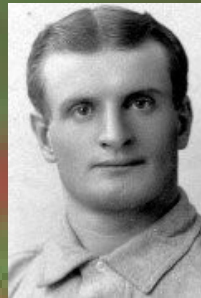






1-Frank Corridon 2-Ralph Caldwell

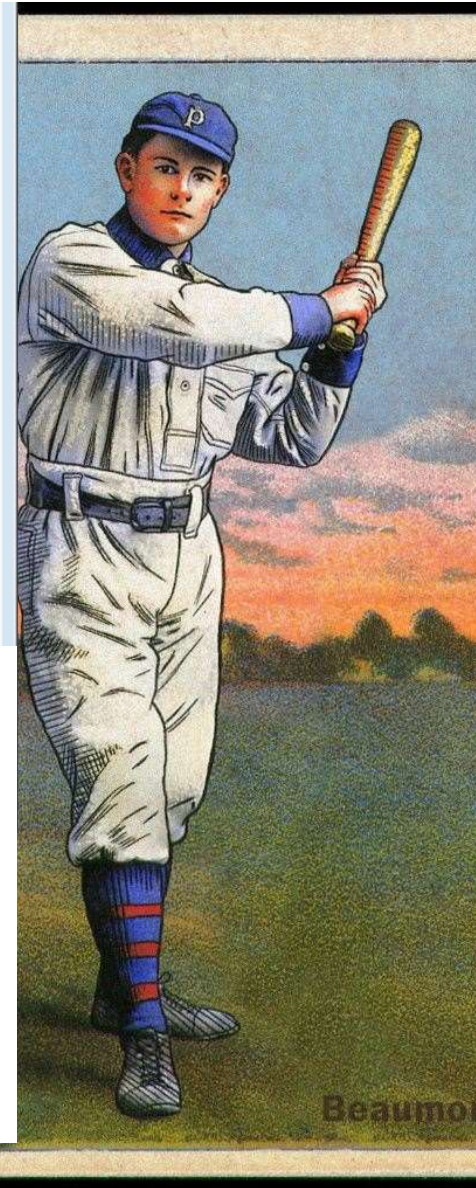
Newton Buccs Draft Picks



**1-Dan McGann, 1B 2-Sam Mertes, RF 3-Ginger Beaumont, CF
4-Dave Fultz, LF 5-Joe Tinker, SS 6-Hobe Ferris, 2B
7-Ed Gremminger, 3B 8-Fritz Buelow, C 9-Rube Waddell, P**

**NEWTON BUCC STARTING
LINEUP OPENING DAY**

17 Players	Tm	Lg	AVG	G	AB	R	H	2B	3B	HR	TB	RBI	SO	BB	ASB	SB	CS
BEAUMONT, G.	NB	TCBA	.303	153	617	87	187	13	7	3	223	85	46	41	43	35	8
MCGANN, D.	NB	TCBA	.298	135	504	99	150	21	5	9	208	61	50	42	46	36	10
MERTES, S.	NB	TCBA	.268	142	538	76	144	35	8	5	210	94	43	43	48	32	16
Beeman, J.	NB	TCBA	.257	78	191	17	49	9	2	3	71	25	40	20	2	2	0
CALDWELL, R.	NB	TCBA	.255	21	47	5	12	0	0	0	12	3	3	6	0	0	0
FULTZ, D.	NB	TCBA	.252	114	337	38	85	15	3	0	106	40	24	20	17	10	7
FLAHERTY, P.	NB	TCBA	.250	41	124	22	31	6	8	1	56	17	26	16	0	0	0
FERRIS, H.	NB	TCBA	.249	151	558	58	139	23	12	4	198	87	81	42	16	8	8
TINKER, J.	NB	TCBA	.237	142	540	61	128	9	10	3	166	69	74	36	58	41	17
SHAY, D.	NB	TCBA	.222	82	266	46	59	4	0	0	63	21	29	36	25	19	6
LEEVEER, S.	NB	TCBA	.214	35	98	17	21	3	0	0	24	4	15	9	0	0	0
GREMMINGER, E.	NB	TCBA	.200	148	500	46	100	21	6	0	133	60	54	38	1	0	1
MORAN, C.	NB	TCBA	.175	49	120	8	21	2	1	0	25	6	17	6	4	3	1
CORRIDON, F.	NB	TCBA	.165	31	85	4	14	0	0	0	14	5	15	3	0	0	0
BUELOW, F.	NB	TCBA	.154	150	456	54	70	13	2	0	87	26	67	40	5	3	2
WADDELL, R.	NB	TCBA	.152	45	125	15	19	3	0	0	22	0	25	7	1	1	0
ABBOTT, F.	NB	TCBA	.133	45	60	9	8	3	1	0	13	2	13	6	1	0	1
Newton Buccs			.239	1562	5166	662	1237	180	65	28	1631	605	622	411	267	190	77



Ginger Beaumont highlighted the Bucc attack, hitting .303 with 87 runs, 187 hits and 85 RBI. Dan McGann (.298) led the club with 99 runs and 9 home runs. Sam Mertes led the team with 94 RBI and 35 doubles. Joe Tinker's 41 stolen bases lead a quartet of thieves that each swiped at least 30 bases. Slick fielding 2nd baseman Hobe Ferris had a team high 12 triples while driving in 87 runs. Super Sub Ed Gremminger joined the above quintet in the 100+ hit club, with an even 100 safeties, 27 for extra bases as Newton won their third consecutive Kirwin Division Championship.

7 Pitchers	Tm	Lg	W	L	PCT	SV	ERA	G	GS	CG	SHO	QS	IP	H	R	ER	HR	SO	BB
FLAHERTY, P.	NB	TCBA	25	11	.694	0	2.09	37	37	34	5	26	327.1	245	95	76	1	103	70
CORRIDON, F.	NB	TCBA	14	10	.583	1	2.56	30	24	20	4	12	224.2	178	87	64	2	112	68
LEEVEER, S.	NB	TCBA	16	15	.516	0	2.92	35	33	26	3	18	274.0	235	108	89	3	81	68
WADDELL, R.	NB	TCBA	27	16	.628	0	2.94	45	45	32	7	25	361.1	258	134	118	6	285	103
CALDWELL, R.	NB	TCBA	3	13	.188	1	5.01	21	13	10	0	2	120.1	147	91	67	2	105	50
Beeman, J.	NB	TCBA	2	0	1.000	6	5.48	16	1	1	1	1	47.2	72	41	29	0	10	13
GREMMINGER, E.	NB	TCBA	1	0	1.000	0	9.61	7	0	0	0	0	19.2	36	25	21	0	7	6
Newton Buccs			88	65	.575	8	3.04	191	153	123	20	84	1375.0	1171	581	464	14	703	378

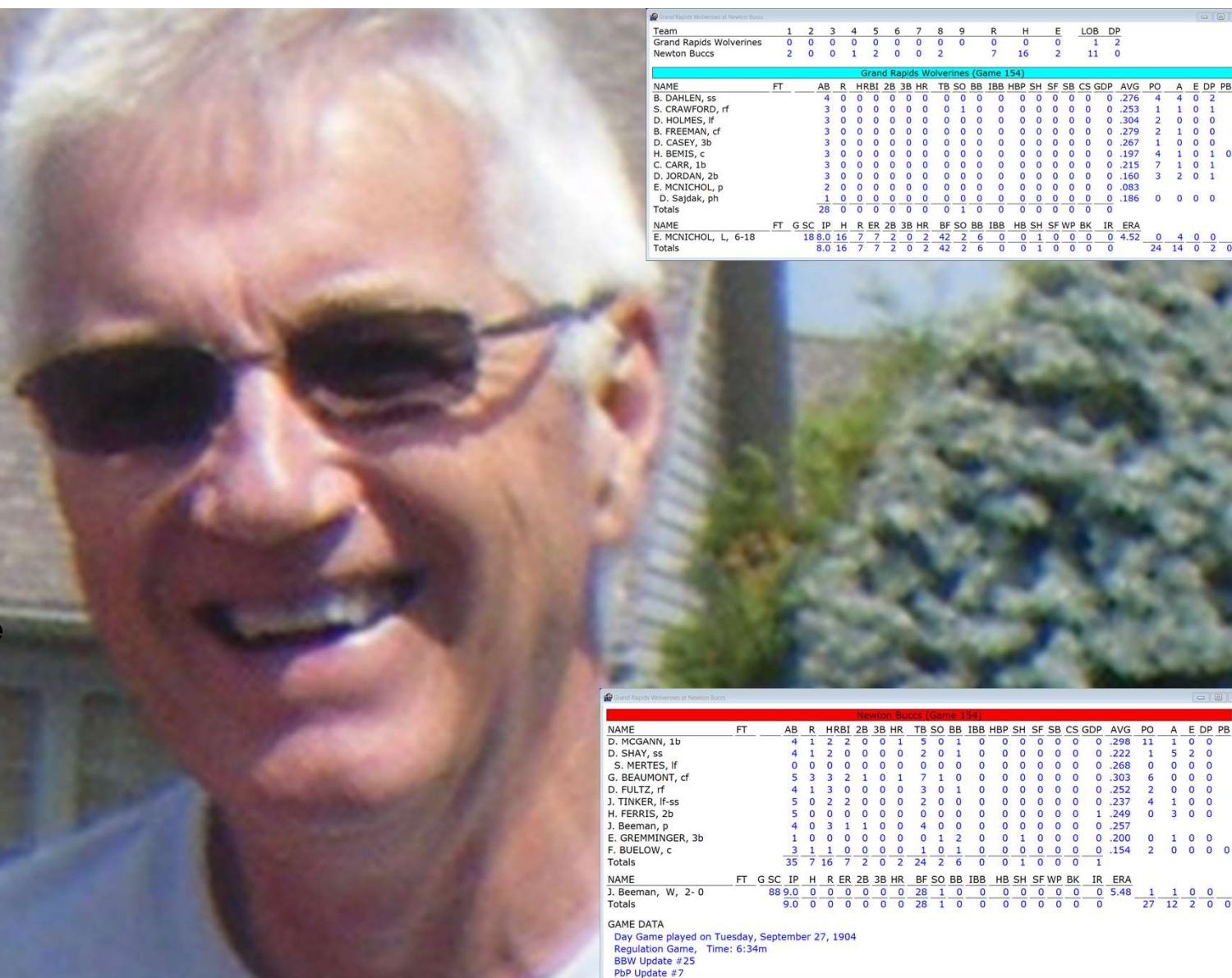
7 Pitchers	Tm	Lg	SUP/9	R/9	ERA	BF/9	BR/9	H/9	BB/9	SO/9	HR/9	ERPT	OBA	BF	BR	IBB	HB	WP	BK
FLAHERTY, P.	NB	TCBA	5.0	2.61	2.09	35.7	8.9	6.7	1.8	2.8	.03	37.4	.208	1297	325	3	13	13	0
CORRIDON, F.	NB	TCBA	3.3	3.49	2.56	37.0	9.8	7.1	2.5	4.5	.08	13.8	.213	923	245	5	4	2	0
LEEVEER, S.	NB	TCBA	4.3	3.55	2.92	36.9	10.2	7.7	2.2	2.7	.10	5.9	.230	1123	312	1	10	2	1
WADDELL, R.	NB	TCBA	4.4	3.34	2.94	36.1	9.2	6.4	2.5	7.1	.15	7.1	.199	1451	370	1	10	10	0
CALDWELL, R.	NB	TCBA	2.5	6.81	5.01	42.2	15.0	11.0	3.7	7.9	.15	-25.3	.299	564	201	1	5	3	0
Beeman, J.	NB	TCBA	1.3	7.74	5.48	42.9	16.4	13.6	2.5	1.9	.00	-12.5	.344	227	87	0	2	0	0
GREMMINGER, E.	NB	TCBA	.0	11.44	9.61	47.6	19.7	16.5	2.7	3.2	.00	-14.2	.379	104	43	0	1	0	0
Newton Buccs			4.0	3.80	3.04	37.2	10.4	7.7	2.4	4.6	.09	12.1	.228	5689	1583	11	45	30	1



The Big Four
Rube Waddell
Patsy
Flaherty
Sam Leever
Frank
Corridon
Left to Right

No-Hitter Finale

**Player Manager
JB Beeman pitched a
no-hitter in the last
regular season game
ever at Newton. Jim
announced his
retirement
immediately after the
game, as well as the
sale of the club to Joe
Elinich, of Pittsburgh**



Team	1	2	3	4	5	6	7	8	9	R	H	E	LOB	DP
Grand Rapids Wolverines	0	0	0	0	0	0	0	0	0	0	0	0	1	2
Newton Buccs	2	0	0	1	2	0	0	2		7	16	2	11	0

Grand Rapids Wolverines (Game 154)																							
NAME	FT	AB	R	HRBI	2B	3B	HR	TB	SO	BB	IBB	HBP	SH	SF	SB	CS	GDP	AVG	PO	A	E	DP	PB
B. DAHLEN, ss		4	0	0	0	0	0	0	0	0	0	0	0	0	0	0	0	.276	4	4	0	2	
S. CRAWFORD, rf		3	0	0	0	0	0	0	1	0	0	0	0	0	0	0	0	.253	1	1	0	1	
D. HOLMES, lf		3	0	0	0	0	0	0	0	0	0	0	0	0	0	0	0	.304	2	0	0	0	
B. FREEMAN, cf		3	0	0	0	0	0	0	0	0	0	0	0	0	0	0	0	.279	2	1	0	0	
D. CASEY, 3b		3	0	0	0	0	0	0	0	0	0	0	0	0	0	0	0	.267	1	0	0	0	
H. BEMIS, c		3	0	0	0	0	0	0	0	0	0	0	0	0	0	0	0	.197	4	1	0	1	0
C. CARR, 1b		3	0	0	0	0	0	0	0	0	0	0	0	0	0	0	0	.215	7	1	0	1	
D. JORDAN, 2b		3	0	0	0	0	0	0	0	0	0	0	0	0	0	0	0	.160	3	2	0	1	
E. MCNICHOL, p		2	0	0	0	0	0	0	0	0	0	0	0	0	0	0	0	.083					
D. Sajdak, ph		1	0	0	0	0	0	0	0	0	0	0	0	0	0	0	0	.186	0	0	0	0	
Totals		28	0	0	0	0	0	0	1	0	0	0	0	0	0	0	0						

NAME	FT	G	SC	IP	H	R	ER	2B	3B	HR	BF	SO	BB	IBB	HB	SH	SF	WP	BK	IR	ERA			
E. MCNICHOL, L, 6-18		18	8.0	16	7	7	2	0	2	42	2	6	0	0	1	0	0	0	0	0	4.52	0	4	0
Totals		8.0	16	7	7	2	0	2	42	2	6	0	0	1	0	0	0	0	0	0	24	14	0	2

Newton Buccs (Game 154)																							
NAME	FT	AB	R	HRBI	2B	3B	HR	TB	SO	BB	IBB	HBP	SH	SF	SB	CS	GDP	AVG	PO	A	E	DP	PB
D. MCGANN, 1b		4	1	2	2	0	0	1	5	0	1	0	0	0	0	0	0	.298	11	1	0	0	
D. SHAY, ss		4	1	2	0	0	0	0	2	0	1	0	0	0	0	0	0	.222	1	5	2	0	
S. MERTEZ, lf		0	0	0	0	0	0	0	0	0	0	0	0	0	0	0	0	.268	0	0	0	0	
G. BEAUMONT, cf		5	3	3	2	1	0	1	7	1	0	0	0	0	0	0	0	.303	6	0	0	0	
D. FULTZ, rf		4	1	3	0	0	0	0	3	0	1	0	0	0	0	0	0	.252	2	0	0	0	
J. TINKER, lf-ss		5	0	2	2	0	0	0	2	0	0	0	0	0	0	0	0	.237	4	1	0	0	
H. FERRIS, 2b		5	0	0	0	0	0	0	0	0	0	0	0	0	0	0	0	.249	0	3	0	0	
J. Beeman, p		4	0	3	1	1	0	0	4	0	0	0	0	0	0	0	0	.257					
E. GREMMINGER, 3b		1	0	0	0	0	0	0	1	2	0	0	1	0	0	0	0	.200	0	1	0	0	
F. BUELOW, c		3	1	1	0	0	0	0	1	0	1	0	0	0	0	0	0	.154	2	0	0	0	0
Totals		35	7	16	7	2	0	2	24	2	6	0	0	1	0	0	0		1				

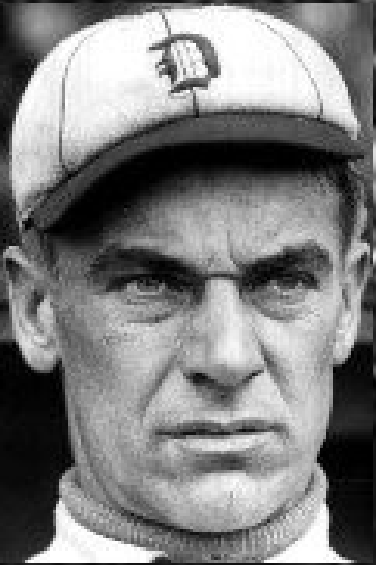
NAME	FT	G	SC	IP	H	R	ER	2B	3B	HR	BF	SO	BB	IBB	HB	SH	SF	WP	BK	IR	ERA			
J. Beeman, W, 2-0		88	9.0	0	0	0	0	0	0	0	28	1	0	0	0	0	0	0	0	0	5.48	1	1	0
Totals		9.0	0	0	0	0	0	0	0	0	28	1	0	0	0	0	0	0	0	0	27	12	2	0

GAME DATA
 Day Game played on Tuesday, September 27, 1904
 Regulation Game, Time: 6:34m
 BBW Update #25
 PbP Update #7



**South Starrucca
Ainspans**

1-Claude Rossman 2-Beanie Jacobson 3-Harry McChesney 4-Orth Collins 5- Pat Hynes



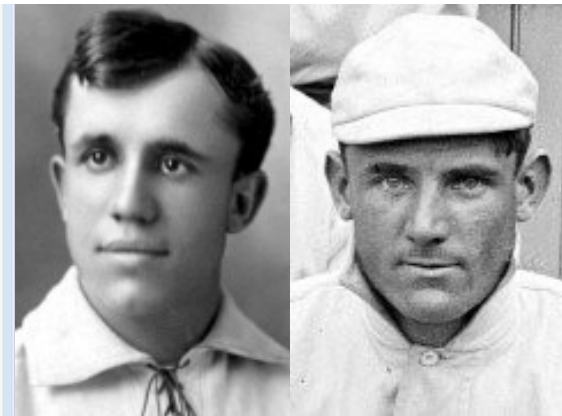
South Starrucca Ainspans Draft Picks



**South Starrucca Ainspans
Opening Day Starting Lineup**

- 1-Danny Green, CF
- 2-Jim Delahanty, 3B
- 3-Matty McIntyre, RF
- 4-Danny Murphy, 2B
- 5-Fred Parent, SS
- 6-Davey Jones, LF
- 7-Heinie Peitz, C
- 8-Jack Doyle 1B
- 9-Cy Young, P

24 Players	Tm	Lg	AVG	G	AB	R	H	2B	3B	HR	TB	RBI	SO	BB	ASB	SB	CS
COLLINS, O.	SO	TCBA	.350	17	20	1	7	2	0	0	9	7	4	0	0	0	0
ALTROCK, N.	SO	TCBA	.346	43	78	5	27	1	0	0	28	6	8	3	0	0	0
MULLIN, G.	SO	TCBA	.343	34	70	15	24	3	3	0	33	10	7	5	0	0	0
ROSSMAN, C.	SO	TCBA	.310	36	58	5	18	4	0	0	22	2	5	0	0	0	0
JONES, D.	SO	TCBA	.290	105	345	63	100	19	6	4	143	42	34	43	19	15	4
PARENT, F.	SO	TCBA	.286	151	604	86	173	22	8	0	211	81	59	37	17	9	8
MURPHY, D.	SO	TCBA	.283	149	566	79	160	32	21	8	258	109	44	32	30	21	9
DOOIN, R.	SO	TCBA	.282	82	216	28	61	7	1	7	91	34	32	3	8	4	4
DELAHANTY, J.	SO	TCBA	.279	145	505	85	141	25	6	5	193	68	44	34	27	20	7
MCCHESENEY, H.	SO	TCBA	.277	35	65	5	18	5	1	0	25	18	3	4	3	1	2
DILLON, P.	SO	TCBA	.273	93	337	36	92	11	7	0	117	43	33	32	4	4	0
GREEN, D.	SO	TCBA	.270	147	540	106	146	18	4	2	178	50	57	69	38	33	5
SUTTHOFF, J.	SO	TCBA	.267	19	15	5	4	0	2	0	8	1	1	4	0	0	0
MCINTYRE, M.	SO	TCBA	.261	150	575	73	150	13	8	3	188	74	47	44	12	6	6
OWEN, F.	SO	TCBA	.252	42	111	9	28	4	0	2	38	9	18	5	4	1	3
Fiehl, S.	SO	TCBA	.221	47	95	7	21	2	0	1	26	7	23	6	0	0	0
PEITZ, H.	SO	TCBA	.221	148	485	45	107	29	2	1	143	53	70	31	1	0	1
YOUNG, C.	SO	TCBA	.220	47	127	18	28	5	1	1	38	10	24	3	3	3	0
DOYLE, J.	SO	TCBA	.220	78	246	24	54	15	3	0	75	26	27	22	1	0	1
HUGHES, L.	SO	TCBA	.194	29	36	3	7	0	1	0	9	2	3	1	0	0	0
DOBBS, J.	SO	TCBA	.176	82	170	23	30	6	0	0	36	9	34	21	4	4	0
HYNES, P.	HP	TCBA	.176	12	34	6	6	2	1	0	10	1	5	1	0	0	0
JACOBSON, B.	SO	TCBA	.097	23	31	1	3	0	0	0	3	3	7	1	0	0	0
WILHELM, K.	SO	TCBA	.079	27	38	3	3	1	0	0	4	2	9	0	0	0	0
South Starrucca Ainspans			.262	1741	5367	731	1408	226	75	34	1886	667	598	401	171	121	50



Fred Parent led the team in hits (173) while Gold-Glove winner Danny Green scored 106 runs and stole 33 bases.



Danny Murphy led the team in RBI (109), doubles (32), triples (21) and home runs (8)



11 Pitchers																					
Tm	Lg	W	L	PCT	SV	ERA	G	GS	CG	SHO	QS	IP	H	R	ER	HR	SO	BB			
ROSSMAN, C.	SO	TCBA	1	0	1.000	0	.00	1	0	0	0	1.0	2	0	0	0	0	0	0	0	
YOUNG, C.	SO	TCBA	26	14	.650	2	1.64	47	43	29	6	352.0	239	94	64	1	177	32			
OWEN, F.	SO	TCBA	27	9	.750	3	1.80	42	38	22	5	310.1	206	100	62	3	90	69			
SUTTHOFF, J.	SO	TCBA	2	4	.333	2	2.08	19	3	3	0	52.0	52	21	12	0	20	20			
ALTROCK, N.	SO	TCBA	9	17	.346	8	2.95	43	28	17	2	238.1	237	107	78	2	82	38			
MULLIN, G.	SO	TCBA	10	10	.500	1	4.03	32	20	10	2	145.1	132	80	65	2	72	66			
HUGHES, L.	SO	TCBA	8	2	.800	1	4.03	28	4	2	0	91.2	99	61	41	2	49	51			
JACOBSON, B.	SO	TCBA	3	3	.500	0	4.42	23	8	3	0	89.2	140	67	44	1	31	32			
WILHELM, K.	SO	TCBA	5	4	.556	1	4.43	27	10	5	0	105.2	133	74	52	5	30	25			
Fiehl, S.	SO	TCBA	0	0	-	0	4.50	1	0	0	0	2.0	2	1	1	0	1	1			
HYNES, P.	HP	TCBA	0	0	-	0	9.00	1	0	0	0	1.0	2	1	1	0	1	0			
South Starrucca Ainspans			91	63	.591	18	2.72	264	154	91	15	74	1389.0	1244	606	420	16	553	334		

11 Pitchers																				
Tm	Lg	SUP/9	R/9	ERA	BF/9	BR/9	H/9	BB/9	SO/9	HR/9	ERPT	OBA	BF	BR	IBB	HB	WP	BK		
ROSSMAN, C.	SO	TCBA	.0	.00	.00	36.0	18.0	18.0	.0	.0	.00	.3	.500	4	2	0	0	0	0	0
YOUNG, C.	SO	TCBA	4.7	2.40	1.64	34.4	7.0	6.1	.5	4.5	.03	58.1	.188	1346	272	11	12	6	0	0
OWEN, F.	SO	TCBA	4.2	2.90	1.80	35.5	8.2	6.0	1.9	2.6	.09	45.6	.185	1224	283	4	12	5	1	0
SUTTHOFF, J.	SO	TCBA	2.9	3.63	2.08	38.8	12.3	9.0	3.3	3.5	.00	6.0	.260	224	71	1	0	0	0	0
ALTROCK, N.	SO	TCBA	3.5	4.04	2.95	37.8	10.6	8.9	1.2	3.1	.08	4.7	.253	1001	280	5	10	5	0	0
MULLIN, G.	SO	TCBA	5.9	4.95	4.03	39.9	12.6	8.2	4.0	4.5	.12	-14.6	.235	644	203	2	7	2	0	0
HUGHES, L.	SO	TCBA	1.1	5.99	4.03	41.8	15.0	9.7	5.0	4.8	.20	-9.2	.270	426	153	0	3	3	0	0
JACOBSON, B.	SO	TCBA	4.3	6.72	4.42	44.5	17.7	14.1	3.2	3.1	.10	-12.9	.354	443	176	0	4	3	0	0
WILHELM, K.	SO	TCBA	3.8	6.30	4.43	41.0	13.6	11.3	2.1	2.6	.43	-15.4	.298	481	160	0	2	3	0	0
Fiehl, S.	SO	TCBA	.0	4.50	4.50	40.5	13.5	9.0	4.5	4.5	.00	-.3	.286	9	3	0	0	0	0	0
HYNES, P.	HP	TCBA	.0	9.00	9.00	45.0	18.0	18.0	.0	9.0	.00	-.7	.400	5	2	0	0	0	0	0
South Starrucca Ainspans			4.1	3.93	2.72	37.6	10.4	8.1	2.0	3.6	.10	61.8	.234	5807	1605	23	50	27	1	0



Imaged by Heritage Auctions, H.A.COM



OWEN, CHICAGO AMER.

Cy Young (26-14, 1.64 ERA, 177 K, 352 innings) and Frank Owen (27-9, 1.80 ERA, 310.1 innings) started in 81 of the 154 Ainspan games, completing 51 of those with 11 shutouts to lead the staff

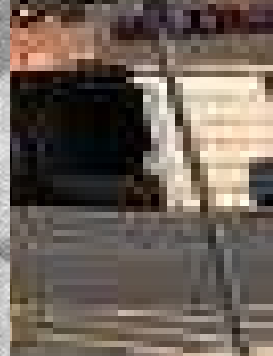


MALLARDS

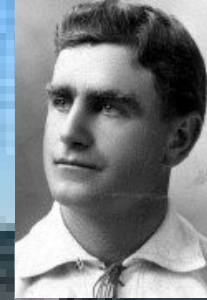
Mexicali Mallards Draft Picks



1-Buttons Briggs 2-Moose McCormick 3-Pete Noonan 4-Bobby Lowe 5-Bob Hall 6-Bill Schwartz



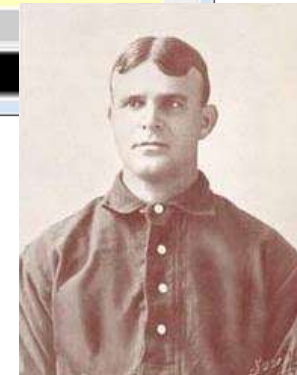
Starting Lineup Opening Day for the Mexicali Mallards



- 1-Frank Chance, 1B**
- 2-Patsy Dougherty, LF**
- 3-Duffy Cooley, CF**
- 4-Chick Stahl, RF**
- 5-Jimmy Williams, 2B**
- 6-Lee Tannehill, 3B**
- 7-Monte Cross SS**
- 8-Ossee Schreckengost C**
- 9-Chick Fraser, P**

24 Players	Tm	Lg	AVG	G	AB	R	H	2B	3B	HR	TB	RBI	SO	BB	ASB	SB	CS
CHANCE, F.	ME	TCBA	.324	115	445	83	144	11	6	5	182	47	40	28	55	43	12
MCCORMICK, M.	ME	TCBA	.302	125	454	53	137	23	10	4	192	63	34	27	27	17	10
STAHL, C.	ME	TCBA	.296	149	558	100	165	39	15	5	249	80	55	72	13	9	4
WILLIAMS, J.	ME	TCBA	.295	148	562	47	166	37	7	0	217	99	43	37	29	22	7
DOUGHERTY, P.	ME	TCBA	.280	146	614	96	172	26	12	5	237	83	56	29	32	22	10
COOLEY, D.	ME	TCBA	.255	98	314	46	80	12	2	1	99	31	33	20	13	10	3
KITTRIDGE, M.	ME	TCBA	.226	125	434	23	98	20	0	0	118	43	62	17	1	1	0
BURKE, J.	ME	TCBA	.222	46	81	13	18	6	0	0	24	6	9	2	4	2	2
HAHN, N.	ME	TCBA	.215	38	107	12	23	4	1	0	29	6	12	12	1	1	0
TANNEHILL, L.	ME	TCBA	.198	146	479	42	95	24	4	0	127	42	55	10	16	13	3
SCHRECKENGOST, O.	ME	TCBA	.183	62	126	10	23	2	0	0	25	9	15	3	0	0	0
CROSS, M.	ME	TCBA	.175	153	537	52	94	26	4	0	128	30	97	48	20	14	6
LOWE, B.	ME	TCBA	.167	23	42	4	7	1	0	0	8	4	9	1	1	1	0
SCHWARTZ, B.	ME	TCBA	.158	43	76	14	12	3	0	0	15	3	15	1	5	2	3
HALL, B.	ME	TCBA	.158	36	57	7	9	1	0	0	10	4	11	5	0	0	0
BRIGGS, B.	ME	TCBA	.154	34	104	10	16	1	1	0	19	10	13	6	0	0	0
Keefer, A.	ME	TCBA	.146	42	41	1	6	2	0	1	11	3	11	3	0	0	0
FRASER, C.	ME	TCBA	.143	34	91	5	13	3	0	0	16	5	17	5	0	0	0
MCFARLAND, C.	ME	TCBA	.104	30	77	3	8	0	0	0	8	1	13	10	0	0	0
NOONAN, P.	ME	TCBA	.100	27	40	2	4	0	0	0	4	1	9	0	0	0	0
WINTER, G.	ME	TCBA	.085	24	47	5	4	0	0	0	4	1	8	5	0	0	0
REIDY, B.	ME	TCBA	.083	17	12	1	1	0	0	0	1	1	2	1	0	0	0
PUTTMANN, A.	ME	TCBA	.077	26	13	1	1	1	0	0	2	0	1	0	0	0	0
MOREN, L.	ME	TCBA	.000	7	2	0	0	0	0	0	0	0	1	0	0	0	0
Mexicali Mallards			.244	1694	5313	630	1296	242	62	21	1725	572	621	342	217	157	60

Frank Chance's injury, late in the season, tipped the scales and ended Mexicali's run at the Division title. The Peerless Leader hit .324 to lead the club. Chick Stahl scored 100 times, with 39 doubles and 15 triples for the Mallards while Jimmy Williams drove in 100 runs



1905 | TCBA Origins 1904 MLB | TCBA Origins | McCorkindale Division | Mexicali Mallards

Frank Chance (L), Jimmy Williams and Chick Stahl

10 Pitchers	Tm	Lg	W	L	PCT	SV	ERA	G	GS	CG	SHO	QS	IP	H	R	ER	HR	SO	BB
BURKE, J.	ME	TCBA	0	0	-	0	-	1	0	0	0	0	.0	1	0	0	0	0	0
WINTER, G.	ME	TCBA	8	9	.471	1	1.91	24	18	12	1	14	160.0	121	44	34	3	50	34
HAHN, N.	ME	TCBA	22	11	.667	2	2.21	38	34	28	3	21	314.0	255	98	77	3	91	58
BRIGGS, B.	ME	TCBA	20	13	.606	0	2.22	34	34	29	5	21	296.0	210	104	73	4	141	76
FRASER, C.	ME	TCBA	16	11	.593	0	2.45	34	33	20	5	17	272.0	222	100	74	3	107	90
PUTTMANN, A.	ME	TCBA	8	5	.615	4	2.92	26	1	0	0	1	49.1	38	19	16	0	24	29
MCFARLAND, C.	ME	TCBA	13	14	.481	0	3.09	30	29	20	4	19	235.2	243	91	81	5	126	42
MOREN, L.	ME	TCBA	0	1	.000	0	5.06	7	1	0	0	0	10.2	13	11	6	1	3	4
REIDY, B.	ME	TCBA	2	0	1.000	0	6.42	17	3	1	0	0	47.2	70	36	34	4	16	12
Keefer, A.	ME	TCBA	0	0	-	0	6.75	2	0	0	0	0	2.2	8	6	2	0	2	0
Mexicali Mallards			89	64	.582	7	2.57	213	153	110	18	93	1388.0	1181	509	397	23	560	345

10 Pitchers	Tm	Lg	SUP/9	R/9	ERA	BF/9	BR/9	H/9	BB/9	SO/9	HR/9	ERPT	OBA	BF	BR	IBB	HB	WP	BK
BURKE, J.	ME	TCBA	-	-	-	-	-	-	-	-	-	-	1.000	1	1	0	0	0	0
WINTER, G.	ME	TCBA	3.3	2.48	1.91	36.0	8.9	6.8	1.9	2.8	.17	21.4	.207	640	159	1	5	0	0
HAHN, N.	ME	TCBA	3.7	2.81	2.21	35.7	9.1	7.3	1.6	2.6	.09	31.8	.221	1244	318	3	8	2	3
BRIGGS, B.	ME	TCBA	4.2	3.16	2.22	36.1	9.1	6.4	2.2	4.3	.12	29.6	.197	1188	298	3	15	1	0
FRASER, C.	ME	TCBA	4.5	3.31	2.45	37.2	10.3	7.3	2.7	3.5	.10	20.3	.224	1123	312	7	7	8	1
PUTTMANN, A.	ME	TCBA	.2	3.47	2.92	37.2	11.9	6.9	4.9	4.4	.00	1.1	.230	204	65	2	0	1	0
MCFARLAND, C.	ME	TCBA	3.2	3.48	3.09	37.5	11.2	9.3	1.6	4.8	.19	.7	.264	981	294	1	10	3	0
MOREN, L.	ME	TCBA	.8	9.28	5.06	43.0	14.3	11.0	3.4	2.5	.84	-2.3	.277	51	17	0	0	0	1
REIDY, B.	ME	TCBA	2.8	6.80	6.42	42.3	15.7	13.2	2.3	3.0	.76	-17.5	.340	224	83	0	1	1	0
Keefer, A.	ME	TCBA	.0	20.25	6.75	57.4	27.0	27.0	.0	6.8	.00	-1.1	.471	17	8	0	0	0	0
Mexicali Mallards			3.6	3.30	2.57	36.8	10.1	7.7	2.1	3.6	.15	84.0	.229	5673	1555	17	46	16	5

Noodles Hahn (22-11, 2.21) and Buttons Briggs (20-13, 2.22) were the big winners for the Mallards, but the big story was Grade 5 (D) Chick Fraser. Until finally tiring, late in the season, Chick was 16-6 with an ERA of 1.78 and five shutouts, before going 0-5 in his last six starts of the campaign. As Chick went, so did Mexicali, who faltered to a 3rd place finish in the rugged McCorkindale Division, despite finishing 25 games over 500. Chappie McFarland was also an inning eater for Mexicali, winning 13 games.



CHARLES FRASER
PITCHER OF THE PHILADELPHIA OR. L.J. GLEN

ISLANDERS



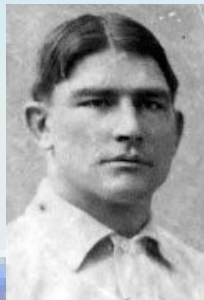
BASEBALL





Long Island Islanders Draft Picks

1-Bugs Raymond 2-Tom Needham 3-Rube Vinson 4-Jesse Stovall 5-Tom Dougherty

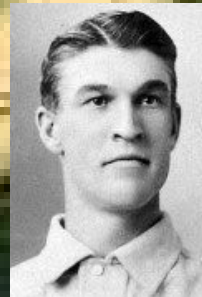
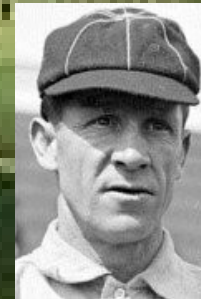


Long Island



**Opening Day Starting Lineup
Long Island Islanders**

**1-Roy Thomas, CF 2-Billy Lush, LF 3-Elmer Flick, RF
4-Jimmy Collins, 3B 5-John Ganzel, 1B 6-Kid Gleason, 2B
7-Eddie Abbaticchio SS 8-Frank Bowerman, C 9-Doc White, P**



24 Players	Tm	Lg	AVG	G	AB	R	H	2B	3B	HR	TB	RBI	SO	BB	ASB	SB	CS
RAYMOND, B.	LI	TCBA	.333	18	3	1	1	0	0	0	1	0	1	0	0	0	0
BROWNE, G.	LI	TCBA	.320	104	291	48	93	13	3	2	118	42	15	12	14	12	2
FLICK, E.	LI	TCBA	.306	149	599	96	183	35	12	5	257	93	60	45	44	25	19
NEEDHAM, T.	LI	TCBA	.296	60	125	12	37	2	1	1	44	23	11	10	1	1	0
THOMAS, R.	LI	TCBA	.291	140	505	110	147	4	5	1	164	36	50	96	39	30	9
COLLINS, J.	LI	TCBA	.291	154	626	89	182	34	10	3	245	118	46	41	26	14	12
GANZEL, J.	LI	TCBA	.283	132	470	59	133	14	11	5	184	87	44	23	7	5	2
GLEASON, K.	LI	TCBA	.269	153	584	62	157	21	7	0	192	69	51	36	19	11	8
LUNDGREN, C.	LI	TCBA	.267	35	75	12	20	4	2	0	28	5	7	5	1	1	0
STREET, G.	LI	TCBA	.263	34	19	7	5	3	0	0	8	5	2	2	2	2	0
LUSH, B.	LI	TCBA	.257	134	447	89	115	11	9	0	144	46	48	91	24	13	11
McEaney, J.	LI	TCBA	.250	54	96	9	24	3	0	2	33	11	16	7	0	0	0
CORCORAN, T.	LI	TCBA	.234	140	432	55	101	18	5	3	138	62	59	19	12	7	5
POWERS, M.	LI	TCBA	.233	95	180	18	42	7	0	0	49	17	26	8	0	0	0
VINSON, R.	LI	TCBA	.224	56	49	10	11	0	0	0	11	8	7	13	0	0	0
ABBATICCHIO, E.	LI	TCBA	.213	106	254	41	54	8	6	1	77	33	26	19	15	11	4
BOWERMAN, F.	LI	TCBA	.191	106	246	28	47	9	3	0	62	22	43	14	10	9	1
SPARKS, T.	LI	TCBA	.188	38	32	5	6	0	0	0	6	3	10	3	0	0	0
EWING, B.	LI	TCBA	.178	34	73	7	13	4	2	1	24	7	6	5	1	1	0
CRONIN, J.	LI	TCBA	.155	43	71	6	11	1	0	0	12	6	13	4	0	0	0
STOVALL, J.	LI	TCBA	.143	26	7	2	1	0	0	0	1	1	1	0	1	1	0
KELLUM, W.	LI	TCBA	.141	40	78	12	11	3	0	0	14	6	17	7	4	4	0
WHITE, D.	LI	TCBA	.104	32	77	9	8	1	0	0	9	4	12	11	2	1	1
DOUGHERTY, T.	LI	TCBA	-	6	0	0	0	0	0	0	0	0	0	0	0	0	0
Long Island Islanders			.263	1889	5339	787	1402	195	76	24	1821	704	571	471	222	148	74

Roy Thomas drew 96 walks, helping him score 110 times for LI. Jimmy Collins had 118 RBI. Elmer Flick hit .306 with 96 runs and 93 RBI. Billy Lush scored 89 runs. John Ganzel knocked in 87 Islanders with 5 HRs, matching Flick's team leading total (Elmer led the team with 35 doubles, 12 triples and 183 hits too – the "Cycle" if you will. George Browne had the highest average (.320) for any player, and was one of ten Islanders to appear in 100 or more games.





11 Pitchers	Tm	Lg	W	L	PCT	SV	ERA	G	GS	CG	SHO	QS	IP	H	R	ER	HR	SO	BB
KELLUM, W.	LI	TCBA	18	11	.621	3	1.98	40	27	15	5	19	250.1	192	69	55	0	68	50
LUNDGREN, C.	LI	TCBA	21	7	.750	1	2.25	35	31	17	1	24	259.2	180	83	65	2	146	63
SPARKS, T.	LI	TCBA	12	1	.923	7	2.49	38	8	6	1	3	119.1	100	38	33	1	25	32
CRONIN, J.	LI	TCBA	19	9	.679	5	2.92	43	27	16	5	16	237.2	207	93	77	7	113	67
RAYMOND, B.	LI	TCBA	2	1	.667	2	2.92	18	1	1	0	1	24.2	29	9	8	0	14	10
EWING, B.	LI	TCBA	16	10	.615	1	3.16	34	29	11	3	17	219.0	199	84	77	1	103	70
WHITE, D.	LI	TCBA	13	11	.542	0	3.20	32	31	14	3	18	230.2	193	100	82	6	107	103
STOVALL, J.	LI	TCBA	0	3	.000	1	6.68	22	0	0	0	0	32.1	47	29	24	1	13	17
DOUGHERTY, T.	LI	TCBA	0	0	-	2	11.57	6	0	0	0	0	4.2	10	6	6	1	2	1
McEneaney, J.	LI	TCBA	0	0	-	0	11.81	7	0	0	0	0	10.2	30	17	14	0	4	4
CORCORAN, T.	LI	TCBA	0	0	-	0	18.00	2	0	0	0	0	3.0	10	8	6	1	0	2
Long Island Islanders			101	53	.656	22	2.89	277	154	80	18	98	1392.0	1197	536	447	20	595	419

11 Pitchers	Tm	Lg	SUP/9	R/9	ERA	BF/9	BR/9	H/9	BB/9	SO/9	HR/9	ERPT	OBA	BF	BR	IBB	HB	WP	BK
KELLUM, W.	LI	TCBA	3.4	2.48	1.98	35.3	8.9	6.9	1.6	2.4	.00	31.8	.213	983	247	5	10	0	1
LUNDGREN, C.	LI	TCBA	4.4	2.88	2.25	35.6	8.6	6.2	2.1	5.1	.07	25.1	.193	1027	249	2	8	2	0
SPARKS, T.	LI	TCBA	4.9	2.87	2.49	36.4	10.1	7.5	2.4	1.9	.08	8.4	.228	483	134	0	2	0	0
CRONIN, J.	LI	TCBA	4.5	3.52	2.92	37.1	10.6	7.8	2.5	4.3	.27	5.4	.232	981	279	1	6	1	0
RAYMOND, B.	LI	TCBA	2.6	3.28	2.92	40.5	14.2	10.6	3.6	5.1	.00	.6	.299	111	39	0	0	0	0
EWING, B.	LI	TCBA	4.4	3.45	3.16	37.6	11.3	8.2	2.8	4.2	.04	-1.0	.242	916	275	1	7	4	2
WHITE, D.	LI	TCBA	5.7	3.90	3.20	38.6	12.0	7.5	4.0	4.2	.23	-2.0	.227	990	307	0	11	0	0
STOVALL, J.	LI	TCBA	.0	8.07	6.68	43.7	18.1	13.1	4.7	3.6	.28	-12.8	.348	157	65	0	1	0	0
DOUGHERTY, T.	LI	TCBA	.0	11.57	11.57	48.2	21.2	19.3	1.9	3.9	1.93	-4.4	.435	25	11	0	0	0	0
McEneaney, J.	LI	TCBA	.0	14.34	11.81	54.8	28.7	25.3	3.4	3.4	.00	-10.3	.500	65	34	0	0	0	0
CORCORAN, T.	LI	TCBA	.0	24.00	18.00	69.0	36.0	30.0	6.0	.0	3.00	-5.0	.500	23	12	0	0	0	0
Long Island Islanders			4.3	3.47	2.89	37.2	10.7	7.7	2.7	3.8	.13	35.8	.231	5761	1652	9	45	7	3



LI had six pitchers win 10 or more games, and 4 strike out 100 or more hitters. But none had more than Carl Lundgren (21 wins, 146 k's). Jack Cronin finished at 19-9 while Tully Sparks was an impressive 12-1 with 7 saves for the Don Mahley Division champions, who had Origins best record

	W	L	PCT	GB
TCBA Origins				
Mahley Division				
Long Island Islanders	101	53	.656	-
South Starrucca Ainspans	91	63	.591	10.0
Boston Beaneaters	74	80	.481	27.0
Hyde Park Vitamen	64	90	.416	37.0
McCorkindale Division				
Bradenton Buckeyes	97	57	.630	-
Bergen Barflies	91	62	.595	5.5
Mexicali Mallards	89	64	.582	7.5
Cleveland Naps	84	70	.545	13.0
Kirwin Division				
Newton Buccs	88	65	.575	-
Waukesha Freeman	74	80	.481	14.5
Grand Rapids Wolverines	58	96	.377	30.5
Mimosa Mirthmakers	52	101	.340	36.0
Seitz Division				
Turin Mountaineers	88	66	.571	-
Wilderness Wraiths	78	76	.506	10.0
Hereford Highlanders	66	88	.429	22.0
Buffalo Mules	35	119	.227	53.0

FINAL STANDINGS

1905

16 Teams	AVG	OBP	SLG	G	AB	H	2B	3B	HR	R	R/G	SO	BB	LOB	SB	CS	SBP
Long Island Islanders	.263	.325	.341	154	5339	1402	195	76	24	787	5.1	571	471	1142	148	74	66.7
South Starrucca Ainspans	.262	.317	.351	154	5367	1408	226	75	34	731	4.7	598	401	1109	121	50	70.8
Bergen Barflies	.259	.309	.354	153	5383	1395	236	96	27	720	4.7	667	367	1115	106	39	73.1
Bradenton Buckeyes	.252	.310	.322	154	5328	1341	226	53	15	748	4.9	654	403	1057	161	67	70.6
Boston Beaneaters	.248	.312	.305	154	5367	1330	161	60	8	642	4.2	614	469	1179	181	78	69.9
Hereford Highlanders	.248	.311	.318	154	5363	1329	211	47	24	654	4.2	711	462	1174	133	52	71.9
Turin Mountaineers	.247	.307	.330	154	5288	1308	222	72	23	679	4.4	669	408	1114	165	52	76.0
Mimosa Mirthmakers	.244	.301	.308	153	5222	1274	188	62	8	627	4.1	671	383	1084	121	39	75.6
Mexicali Mallards	.244	.294	.325	153	5313	1296	242	62	21	630	4.1	621	342	1079	157	60	72.4
Wilderness Wraiths	.243	.305	.305	154	5298	1288	172	64	9	668	4.3	675	450	1109	110	45	71.0
Grand Rapids Wolverines	.240	.289	.321	154	5384	1291	202	92	17	645	4.2	622	320	1041	126	42	75.0
Waukesha Freeman	.239	.300	.314	154	5333	1277	214	62	20	623	4.0	671	394	1115	133	40	76.9
Newton Buccs	.239	.300	.316	153	5166	1237	180	65	28	662	4.3	622	411	1027	190	77	71.2
Cleveland Naps	.233	.287	.293	154	5295	1236	158	60	12	624	4.1	636	367	1012	151	83	64.5
Hyde Park Vitamen	.233	.290	.290	154	5208	1213	168	50	9	600	3.9	654	387	1034	139	58	70.6
Buffalo Mules	.207	.259	.267	154	5168	1069	162	51	16	426	2.8	629	347	1032	107	30	78.1
TCBA Origins	.244	.301	.316	1230	84822	20694	3163	1047	295	10466	8.5	10285	6382	17423	2249	886	71.7

The 10 players with the highest Batting Average

Name	Tm	Lg	AVG	PA
LAJOIE, N.	BR	TCBA	.402	602
KEELER, W.	WW	TCBA	.374	628
BECKLEY, J.	BR	TCBA	.335	603
SEYMOUR, C.	BR	TCBA	.333	581
CHANCE, F.	ME	TCBA	.324	497
WAGNER, H.	WA	TCBA	.321	595
SEYBOLD, S.	BE	TCBA	.319	597
BRADLEY, B.	TU	TCBA	.307	648
CROSS, L.	WA	TCBA	.307	657
FLICK, E.	LI	TCBA	.306	653

The 10 players with the highest Slugging Average

Name	Tm	Lg	SLG	PA
LAJOIE, N.	BR	TCBA	.546	602
WAGNER, H.	WA	TCBA	.468	595
SEYMOUR, C.	BR	TCBA	.467	581
KEELER, W.	WW	TCBA	.466	628
MURPHY, D.	SO	TCBA	.456	616
STAHL, C.	ME	TCBA	.446	644
LUMLEY, H.	TU	TCBA	.440	643
FLICK, E.	LI	TCBA	.429	653
HICKMAN, C.	BE	TCBA	.428	523
MCCORMICK, M.	ME	TCBA	.423	495

The 10 players with the highest On Base Percentage

Name	Tm	Lg	OBP	PA
LAJOIE, N.	BR	TCBA	.449	602
THOMAS, R.	LI	TCBA	.406	610
KEELER, W.	WW	TCBA	.401	628
WAGNER, H.	WA	TCBA	.395	595
CHANCE, F.	ME	TCBA	.388	497
LUSH, B.	LI	TCBA	.386	557
BECKLEY, J.	BR	TCBA	.383	603
ELBERFELD, K.	BR	TCBA	.376	502
STAHL, C.	ME	TCBA	.375	644
HUGGINS, M.	WA	TCBA	.373	645

The 10 players with the most Runs Created

Name	Tm	Lg	RC	PA
LAJOIE, N.	BR	TCBA	136.1	602
KEELER, W.	WW	TCBA	110.3	628
WAGNER, H.	WA	TCBA	102.0	595
STAHL, C.	ME	TCBA	100.2	644
SEYMOUR, C.	BR	TCBA	95.4	581
BRADLEY, B.	TU	TCBA	93.1	648
LUMLEY, H.	TU	TCBA	90.5	643
BURKETT, J.	HH	TCBA	90.1	680
BECKLEY, J.	BR	TCBA	89.0	603
FLICK, E.	LI	TCBA	88.3	653

The 10 players with the most Runs Scored

Name	Tm	Lg	R	PA
LAJOIE, N.	BR	TCBA	125	602
LUMLEY, H.	TU	TCBA	114	643
HUGGINS, M.	WA	TCBA	114	645
THOMAS, R.	LI	TCBA	110	610
GREEN, D.	SO	TCBA	106	624
BURKETT, J.	HH	TCBA	106	680
SELBACH, K.	BE	TCBA	106	691
KEELER, W.	WW	TCBA	101	628
STAHL, C.	ME	TCBA	100	644
MCGANN, D.	NB	TCBA	99	574

The 10 players with the most Runs Batted In

Name	Tm	Lg	RBI	PA
COLLINS, J.	LI	TCBA	118	689
SEYMOUR, C.	BR	TCBA	113	581
MURPHY, D.	SO	TCBA	109	616
CROSS, L.	WA	TCBA	106	657
BECKLEY, J.	BR	TCBA	104	603
KEELER, W.	WW	TCBA	101	628
SMOOT, H.	BR	TCBA	99	577
WILLIAMS, J.	ME	TCBA	99	612
MERTES, S.	NB	TCBA	94	594
FLICK, E.	LI	TCBA	93	653

The 10 players with the most Hits

Name	Tm	Lg	H	PA
LAJOIE, N.	BR	TCBA	218	602
KEELER, W.	WW	TCBA	213	628
CROSS, L.	WA	TCBA	187	657
BEAUMONT, G.	NB	TCBA	187	674
BECKLEY, J.	BR	TCBA	183	603
FLICK, E.	LI	TCBA	183	653
BRADLEY, B.	TU	TCBA	182	648
COLLINS, J.	LI	TCBA	182	689
BURKETT, J.	HH	TCBA	181	680
SEYMOUR, C.	BR	TCBA	177	581

The 10 players with the most Doubles

Name	Tm	Lg	2B	PA
LAJOIE, N.	BR	TCBA	48	602
CROSS, L.	WA	TCBA	54	657
LUSH, J.	HH	TCBA	39	377
HEYDON, M.	TU	TCBA	39	385
WAGNER, H.	WA	TCBA	39	595
STAHL, C.	ME	TCBA	39	644
SEYMOUR, C.	BR	TCBA	37	581
WILLIAMS, J.	ME	TCBA	37	612
TITUS, J.	BS	TCBA	36	594
DAHLEN, B.	GW	TCBA	36	624

3:13 PM U-TCB905 TCBA Origins 1904 MLB

The 10 players with the most Triples

Name	Tm	Lg	3B	PA
MURPHY, D.	SO	TCBA	21	616
CASSIDY, J.	WW	TCBA	20	646
KELLEY, J.	WW	TCBA	19	527
CRAWFORD, S.	GW	TCBA	19	644
WAGNER, H.	WA	TCBA	16	595
LEACH, T.	BS	TCBA	15	643
STAHL, C.	ME	TCBA	15	644
BRAIN, D.	BE	TCBA	14	523
SEYMOUR, C.	BR	TCBA	14	581
STAHL, J.	WA	TCBA	14	599

The 11 players with the most Home Runs

Name	Tm	Lg	HR	PA
LUMLEY, H.	TU	TCBA	16	643
DAVIS, H.	HH	TCBA	12	377
FREEMAN, B.	GW	TCBA	12	673
BRAIN, D.	BE	TCBA	9	523
MCGANN, D.	NB	TCBA	9	574
MURPHY, D.	SO	TCBA	8	616
DOOIN, R.	SO	TCBA	7	225
Sajdak, K.	WA	TCBA	7	474
HICKMAN, C.	BE	TCBA	7	523

2 players tied at 6

The 10 players with the most Walks

Name	Tm	Lg	BB	PA
THOMAS, R.	LI	TCBA	96	610
LUSH, B.	LI	TCBA	91	557
HUGGINS, M.	WA	TCBA	86	645
RITCHEY, C.	MI	TCBA	78	647
DIEHL, E.	BR	TCBA	75	530
SELBACH, K.	BE	TCBA	74	691
STAHL, C.	ME	TCBA	72	644
GREEN, D.	SO	TCBA	69	624
BARRETT, J.	HP	TCBA	67	661
HARTSEL, T.	BS	TCBA	66	657

The 10 players with the most Strikeouts

Name	Tm	Lg	SO	PA
Wood, W.	BR	TCBA	111	621
CROSS, M.	ME	TCBA	97	612
CASSIDY, J.	WW	TCBA	92	646
Sajdak, K.	WA	TCBA	87	474
CARR, C.	GW	TCBA	86	588
PICKERING, O.	HH	TCBA	82	635
HULSWITT, R.	BE	TCBA	81	506
DONOVAN, P.	MI	TCBA	81	516
FERRIS, H.	NB	TCBA	81	611
CANNELL, R.	WW	TCBA	80	622

3:14 PM U-TCB905 TCBA Origins 1904 MLB

Hit Leaders

The 10 players with the most Stolen Bases

Name	Tm	Lg	SB	ASB
CHANCE, F.	ME	TCBA	43	55
TINKER, J.	NB	TCBA	41	58
HEIDRICK, E.	TU	TCBA	38	43
MCGANN, D.	NB	TCBA	36	46
STAHL, J.	WA	TCBA	35	40
BEAUMONT, G.	NB	TCBA	35	43
SHANNON, S.	HP	TCBA	35	48
DAVIS, G.	BU	TCBA	34	40
GREEN, D.	SO	TCBA	33	38
LUMLEY, H.	TU	TCBA	33	44

3:18 PM U-TCB905 TCBA Origins 1904 MLB



16 Teams	ERA	G	CG	SHO	QS	SV	IP	H	R	ER	HR	SO	BB	HB	WP	BK	OBA
Bergen Barflies	2.33	153	99	17	92	8	1384.2	1152	550	359	14	622	349	48	20	0	.221
Cleveland Naps	2.47	154	108	20	98	3	1418.2	1160	526	390	13	656	321	57	25	0	.220
Mexicali Mallards	2.57	153	110	18	93	7	1388.0	1181	509	397	23	560	345	46	16	5	.229
Turin Mountaineers	2.66	154	96	19	91	13	1382.1	1165	540	408	17	604	352	55	18	2	.225
Wilderness Wraiths	2.67	154	116	14	80	3	1389.2	1157	600	412	18	662	389	51	19	2	.223
South Starrucca Ainspans	2.72	154	91	15	74	18	1389.0	1244	606	420	16	553	334	50	27	1	.234
Long Island Islanders	2.89	154	80	18	98	22	1392.0	1197	536	447	20	595	419	45	7	3	.231
Boston Beaneaters	2.92	154	116	13	88	7	1405.0	1242	629	456	18	634	343	67	21	0	.232
Bradenton Buckeyes	2.96	154	92	16	85	26	1404.2	1217	620	462	20	655	432	66	28	3	.230
Newton Buccs	3.04	153	123	20	84	8	1375.0	1171	581	464	14	703	378	45	30	1	.228
Waukesha Freeman	3.15	154	115	6	81	7	1395.2	1214	661	488	15	732	424	55	23	4	.232
Hyde Park Vitamen	3.48	154	97	11	73	10	1374.1	1457	699	532	10	578	394	66	33	4	.270
Hereford Highlanders	3.58	154	116	6	62	5	1378.1	1385	753	549	18	781	423	49	32	1	.256
Mimosa Mirthmakers	4.12	153	114	3	47	4	1354.2	1529	865	620	39	616	490	70	24	3	.282
Grand Rapids Wolverines	4.21	154	95	6	55	4	1384.0	1552	853	647	19	564	568	56	32	4	.282
Buffalo Mules	4.24	154	123	10	47	5	1356.0	1671	938	639	21	770	421	59	20	3	.297
TCBA Origins	3.12	1230	1691	212	1248	150	22172.0	20694	10466	7690	295	10285	6382	885	375	36	.244

< _____ >

< _____ >

1905 Pitching

The 10 players with the best Wins - Losses

Name	Tm	Lg	W - L	PCT
CHESBRO, J.	BE	TCBA	29-16	.644
OWEN, F.	SO	TCBA	27-9	.750
WADDELL, R.	NB	TCBA	27-16	.628
TANNEHILL, J.	TU	TCBA	26-11	.703
YOUNG, C.	SO	TCBA	26-14	.650
FLAHERTY, P.	NB	TCBA	25-11	.694
PELTY, B.	HP	TCBA	25-17	.595
TAYLOR, D.	BR	TCBA	24-10	.706
HENLEY, W.	BR	TCBA	24-13	.649
MCGINNITY, J.	WW	TCBA	24-13	.649

The 10 players with the lowest Earned Run Average

Name	Tm	Lg	ERA	IP
MCGINNITY, J.	WW	TCBA	1.39	362.0
SMITH, F.	WW	TCBA	1.61	235.0
YOUNG, C.	SO	TCBA	1.64	352.0
TAYLOR, J.	CL	TCBA	1.75	360.1
OWEN, F.	SO	TCBA	1.80	310.1
CHESBRO, J.	BE	TCBA	1.90	378.2
TANNEHILL, J.	TU	TCBA	1.91	330.1
WINTER, G.	ME	TCBA	1.91	160.0
BROWN, T.	BE	TCBA	1.94	236.1
CASE, C.	TU	TCBA	1.94	166.2



CHESBRO, N. Y. AMER.



OWEN, CHICAGO AMER.



Waddell - St. Louis Am.



The 10 players with the most Strikeouts

Name	Tm	Lg	SO	IP
WADDELL, R.	NB	TCBA	285	361.1
MATHEWSON, C.	CL	TCBA	227	369.0
WILLIS, V.	HH	TCBA	212	321.2
WEIMER, J.	WA	TCBA	194	321.2
PLANK, E.	TU	TCBA	190	363.0
BENDER, C.	BU	TCBA	186	220.1
CHESBRO, J.	BE	TCBA	180	378.2
YOUNG, C.	SO	TCBA	177	352.0
PITTINGER, T.	WA	TCBA	169	306.1
NICHOLS, K.	BS	TCBA	165	341.1

The 10 players with the lowest Baserunners Per 9 Innings, Starting



WADDELL, p.
St. Louis "BROWNS" American B. B. League.
BY W. H. BARNSTON 1918 CASE CO. ST. LOUIS



"CHRISTY" MATHEWSON, N. Y. Nat'l



Leaders

16 Teams	FLD	G	PO	A	E	DP	TP	PB	OSB	OCS	OSBP	OSBA	DER	UER	UERP
Long Island Islanders	.976	154	4176	2022	154	117	0	18	108	58	65.1	.698	.724	89	16.6
Mexicali Mallards	.974	153	4164	1994	167	105	0	10	102	69	59.6	.661	.727	112	22.0
Newton Buccs	.970	153	4125	1773	183	100	0	19	121	56	68.4	.792	.715	117	20.1
Cleveland Naps	.967	154	4256	1917	209	95	0	11	122	56	68.5	.774	.725	136	25.9
Hyde Park Vitamen	.967	154	4123	2036	209	127	0	26	125	59	67.9	.819	.675	167	23.9
Turin Mountaineers	.966	154	4147	1905	214	97	0	23	131	48	73.2	.853	.722	132	24.4
Bradenton Buckeyes	.964	154	4214	1914	228	104	0	19	140	48	74.5	.897	.713	158	25.5
Boston Beaneaters	.963	154	4215	1900	233	79	0	11	123	41	75.0	.788	.712	173	27.5
Waukesha Freeman	.963	154	4187	1884	233	91	0	25	177	67	72.5	1.141	.705	173	26.2
Grand Rapids Wolverines	.963	154	4152	2106	242	159	0	23	150	50	75.0	.975	.661	206	24.2
South Starrucca Ainspans	.963	154	4167	1961	237	91	0	23	110	60	64.7	.713	.711	186	30.7
Mimosa Mirthmakers	.958	153	4064	2073	268	130	0	21	164	60	73.2	1.090	.657	245	28.3
Hereford Highlanders	.956	154	4135	1753	272	93	0	23	169	57	74.8	1.104	.671	204	27.1
Bergen Barflies	.955	153	4154	1882	282	81	0	18	111	53	67.7	.721	.714	191	34.7
Wilderness Wraiths	.955	154	4169	1934	289	97	0	27	197	61	76.4	1.276	.712	188	31.3
Buffalo Mules	.951	154	4068	1820	303	118	0	32	199	43	82.2	1.321	.624	299	31.9
TCBA Origins	.963	1230	66516	30874	3723	1684	0	329	2249	886	71.7	.913	.697	2776	26.5



1905 Gold Glove Winners

2B-Dick Padden, GW
3B-Bill Bradley, TU
 -Lee Tannehill, ME
SS-George Davis, BU
LF-Emmett Heidrick, TU
 -Danny Green, SO
CF-Topsy Hartsel, BS

RF-Marty McIntyre, SO
 -Sam Mertes, NB
 -Jimmy Sebring, TU
1B-Candy LaChance, TU
C-Joe Sugden, BS
P-Three Finger Brown, BE



A close-up photograph of a baseball, showing its characteristic red stitching on a light-colored leather surface. The baseball is centered in the frame. Overlaid on the baseball is the text 'BASEBALL' in blue, outlined, block letters on the top line, and 'PLAYOFFS' in red, outlined, block letters on the bottom line. The text is positioned horizontally across the middle of the ball.

BASEBALL
PLAYOFFS

SEMI

FINAL

6 Games Played

Date	No.	Team	R	H	E	G Sc	Starters	Decisions	Save
10/06/04	6	Newton Buccs	1	7	2	60	R. WADDELL	L, R. WADDELL	
13:48m	6	Long Island Islanders	3	7	0	68	C. LUNDGREN	W, C. LUNDGREN	T. SPARKS
10/04/04	5	Long Island Islanders	7	9	2	59	D. WHITE	W, D. WHITE	None
17:48m	5	Newton Buccs	4	9	3	51	P. FLAHERTY	L, P. FLAHERTY	
10/03/04	4	Long Island Islanders	4	11	0	54	W. KELLUM	W, W. KELLUM	T. SPARKS
19:14m	4	Newton Buccs	2	10	1	52	R. WADDELL	L, R. WADDELL	
10/02/04	3	Long Island Islanders	1	5	1	57	B. EWING	L, B. EWING	
12:58m	3	Newton Buccs	4	6	1	71	S. LEEVER	W, S. LEEVER	F. CORRIDON
09/30/04	2	Newton Buccs	1	2	4	67	P. FLAHERTY	L, P. FLAHERTY	
10:17m	2	Long Island Islanders	3	5	3	87	D. WHITE	W, D. WHITE	None
09/29/04	1	Newton Buccs	5	8	2	65	R. WADDELL	W, R. WADDELL	None
15:46m	1	Long Island Islanders	3	7	1	56	C. LUNDGREN	L, C. LUNDGREN	

Newton held leads of 1-0 and 2-1, but Long Island rattled off three straight wins to advance to the World Series of 1905.



5 Games Played

Date	No.	Team	R	H	E	G Sc	Starters	Decisions	Save	
10/04/04	5	Bradenton Buckeyes	11	14	2	62	J. HARPER	W, J. HARPER	None	
14:39m	5	Turin Mountaineers	3	7	1	19	J. TANNEHILL	L, J. TANNEHILL		
Date	No.	Team	R	H	E	G Sc	Starters	Decisions	Save	
10/03/04	4	Bradenton Buckeyes	5	8	1	73	D. TAYLOR	W, D. TAYLOR	W. Wood	
14:04m	4	Turin Mountaineers	2	6	1	41	E. PLANK	L, E. PLANK		
Date	No.	Team	R	H	E	G Sc	Starters	Decisions	Save	
10/02/04	3	Bradenton Buckeyes	6	11	0	68	T. WALKER	W, T. WALKER	None	
12:56m	3	Turin Mountaineers	1	7	1	64	J. TANNEHILL	L, J. TANNEHILL		
Date	No.	Team	R	H	E	Inn	G Sc	Starters	Decisions	Save
09/30/04	2	Turin Mountaineers	4	8	4	13	83	C. ROBITAILLE	W, M. O'NEILL	None
22:24m	2	Bradenton Buckeyes	3	6	0		62	J. HARPER	L, R. AMES	
Date	No.	Team	R	H	E	G Sc	Starters	Decisions	Save	
09/29/04	1	Turin Mountaineers	3	10	0	57	J. TANNEHILL	L, E. PLANK		
21:37m	1	Bradenton Buckeyes	5	8	1	56	D. TAYLOR	W, D. TAYLOR	W. Wood	

Left handed starters Jesse Tannehill and Eddie Plank failed to stop the Buckeye bats in a rematch of the 1902 World Series. Nap LaJoie scored 8 runs and Cy Seymour drove in 7 runs to lead the Buckeyes to the World Series

1905



6 Games Played

Date	No.	Team	R	H	E	G Sc	Starters	Decisions	Save	
10/15/04	6	Bradenton Buckeyes	7	13	1	20	T. WALKER	L, R. AMES		
20:42m	6	Long Island Islanders	8	11	0	29	B. EWING	W, C. LUNDGREN	None	
Date	No.	Team	R	H	E	G Sc	Starters	Decisions	Save	
10/13/04	5	Long Island Islanders	0	2	0	54	D. WHITE	L, D. WHITE		
10:39m	5	Bradenton Buckeyes	3	5	1	86	J. HARPER	W, J. HARPER	None	
Date	No.	Team	R	H	E	G Sc	Starters	Decisions	Save	
10/12/04	4	Long Island Islanders	5	7	1	38	B. EWING	L, B. EWING		
18:33m	4	Bradenton Buckeyes	7	10	1	51	D. TAYLOR	W, D. TAYLOR	R. AMES	
Date	No.	Team	R	H	E	Inn	G Sc	Starters	Decisions	Save
10/11/04	3	Long Island Islanders	7	17	1	10	52	C. LUNDGREN	W, T. SPARKS	None
24:34m	3	Bradenton Buckeyes	6	8	0		34	T. WALKER	L, R. AMES	
Date	No.	Team	R	H	E	G Sc	Starters	Decisions	Save	
10/09/04	2	Bradenton Buckeyes	0	6	0	51	J. HARPER	L, J. HARPER		
12:32m	2	Long Island Islanders	5	9	1	80	D. WHITE	W, D. WHITE	None	
Date	No.	Team	R	H	E	G Sc	Starters	Decisions	Save	
10/08/04	1	Bradenton Buckeyes	1	4	3	63	D. TAYLOR	L, D. TAYLOR		
10:09m	1	Long Island Islanders	3	6	1	78	B. EWING	W, B. EWING	None	

10:46 AM U-TCB905 TCBA Origins 1904 MLB World Series

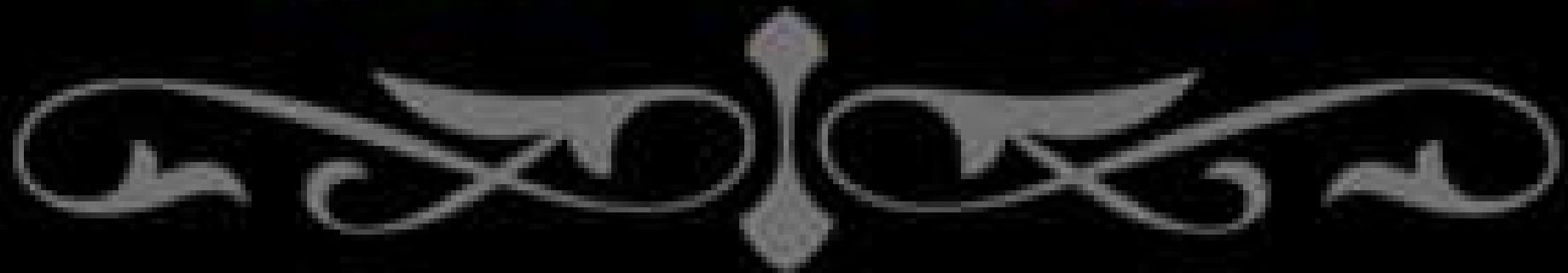


Long Island overcomes a 3-run 9th inning deficit to win Game 3 and take a 3-0 lead over Bradenton, then overcomes a 6-1 deficit to win Game Six and win their 2nd consecutive Championship



TCBA ORIGINS

1900s



- 1902 – Turin Mountaineers**
- 1903 – Cleveland Naps**
- 1904 – Long Island Islanders**
- 1905 – Long Island Islanders**
- 1906 –**
- 1907 –**
- 1908 –**
- 1909 –**



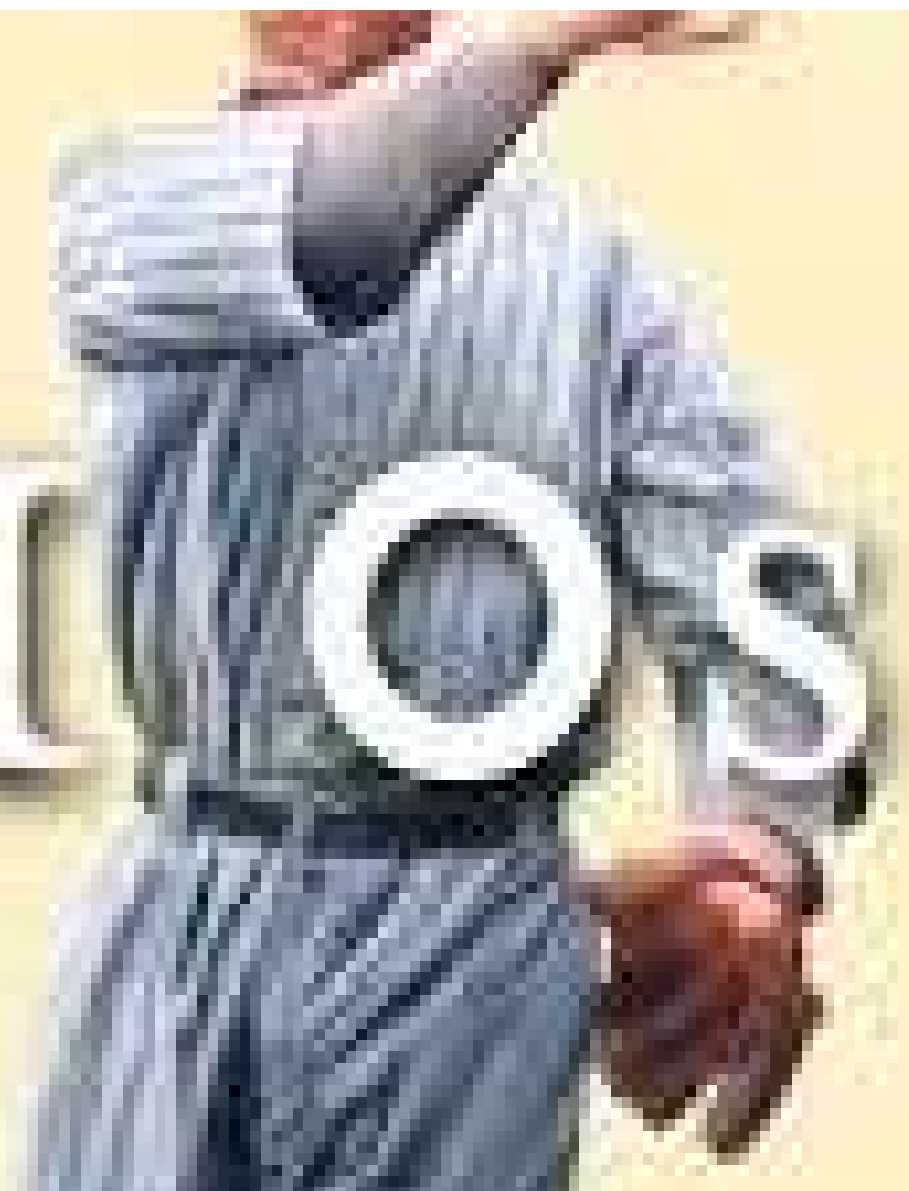
11

9

11

10

8





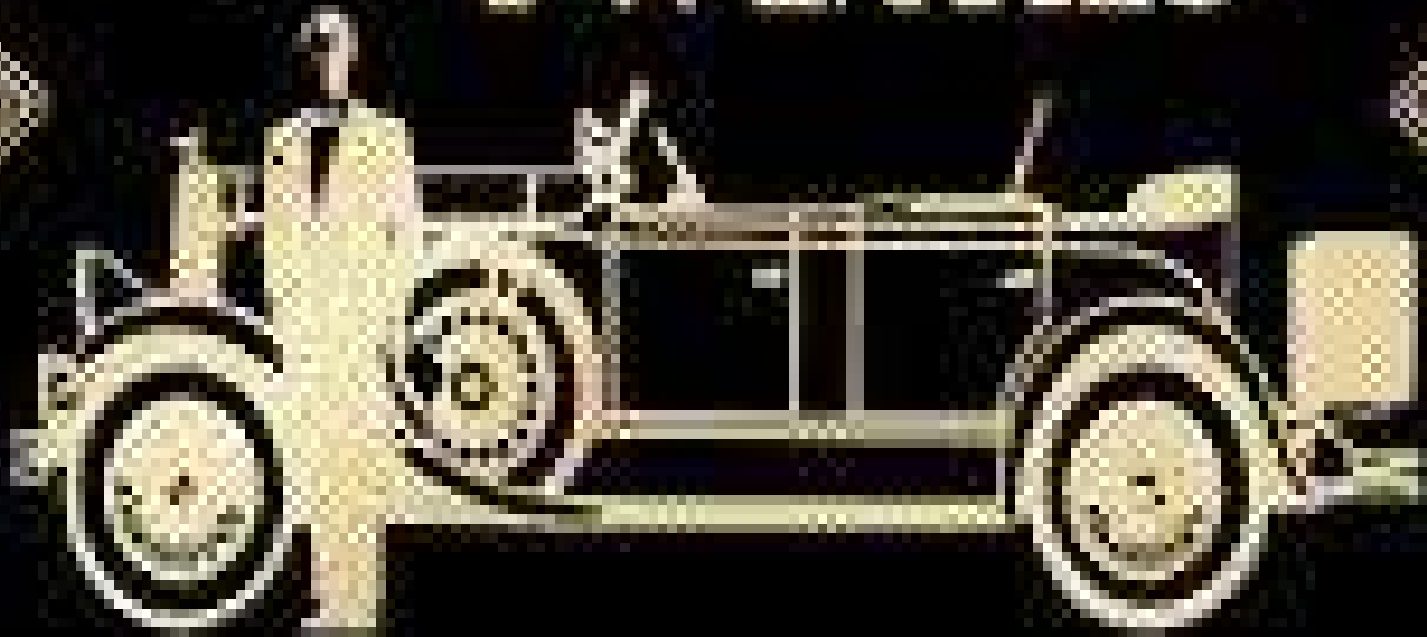
UNFILLED



**TCBA GOLD
1921-1943**

The Roaring

TWENTIES





1921 – Long Island Islanders
1922 – Bergen Barflies
1923 – Siouxland Explorers
1924 – Bergen Barflies
1925 – Mimosa Mirthmakers
1926 – Fortney Gators
1927 – Bergen Barflies
1928 – Bergen Barflies
1929 – Long Island Islanders

MARSHALL ISLANDS

1930 ▶ DECADE OF THE GREAT DEPRESSION • 1939

THE 20TH CENTURY

60



ECONOMIC DEPRESSION ENGULFS THE WORLD

1930s



1930 – Kilkenny Gaelics

1931 – Long Island Islanders

1932 – South Starrucca Ainspans

1933 – Portsmouth Pubdwellers

1934 – Hyde Park VitaMen

1935 – Mimosa Mirthmakers

1936 – Fortney Gators

1937 - South Starrucca Ainspans

1938 – Kilkenny Gaelics

1939 – South Starrucca Ainspans

1040s

An aerial, black and white photograph of a baseball field during a game. The field is diamond-shaped with a pitcher's mound in the center. Several players are visible on the field, including one in the center of the diamond and others near the bases. The outfield is visible with some players positioned there. In the background, the stadium seating is filled with spectators. There are several large signs or advertisements on the outfield fence, including one that appears to say "SODA" and another that says "SODA" and "SODA".

1940 – Chesapeake Regnads
1941 – Bergen Barflies
1942 – Sacramento Solons
1943 – South Starrucca Ainspans




1944-1974
TCBA
YESTERDAY

“The best thing about baseball today is its yesterdays.” Lawrence Ritter

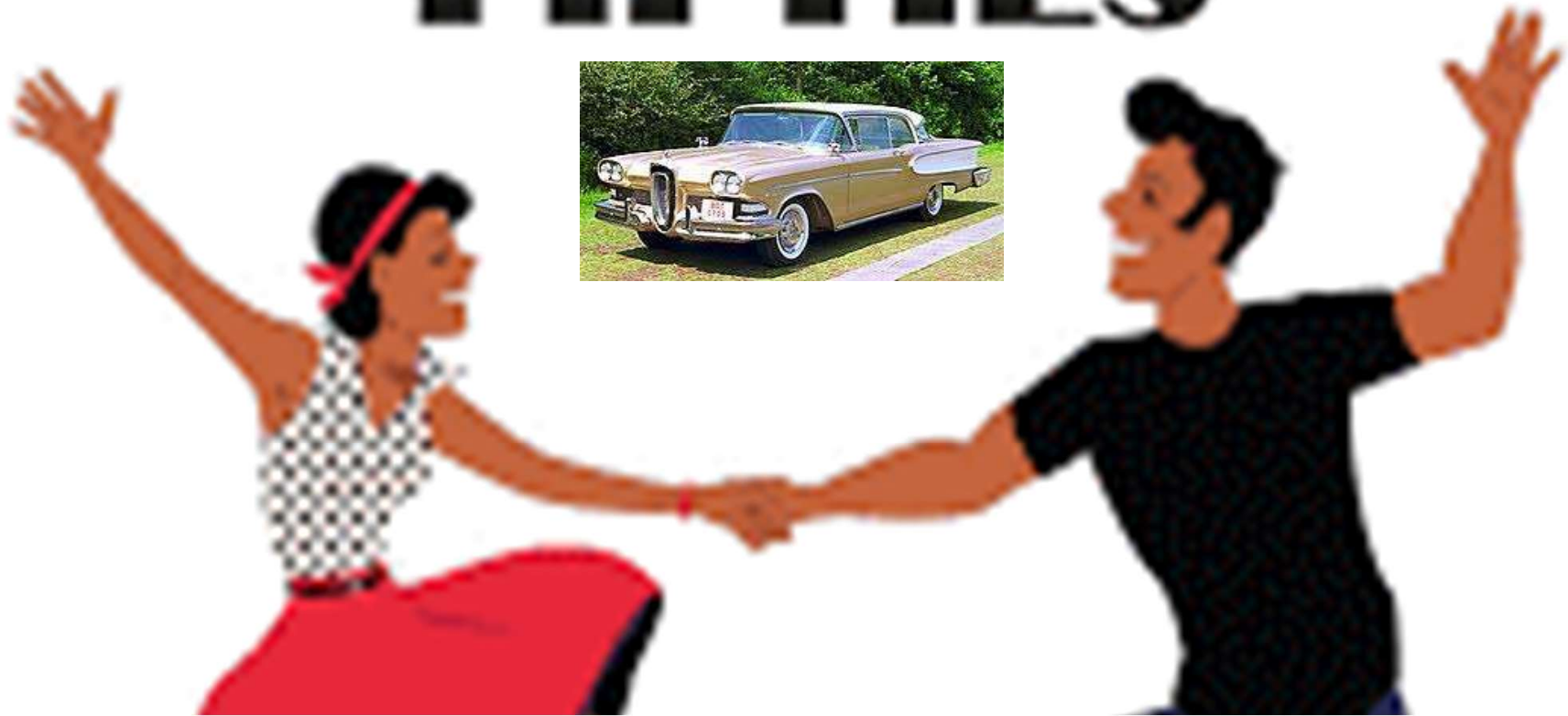
1940s





1944 – Long Island Islanders
1945 – Mexicali Mallards
1946 – Sacramento Solons
1947 – Mimosa Mirthmakers
1948 – Bradenton Buckeyes
1949 – Bradenton Buckeyes

THE FABULOUS FIFTIES





1950 – South Starrucca Ainspans

1951 – Mimosa Mirthmakers

1952 – Fortney Gators

1953 – Fortney Gators

1954 – South Starrucca Ainspans

1955 – Norfolk Pilots

1956 – Hyde Park VitaMen

1957 – Hyde Park VitaMen

1958 – Hyde Park VitaMen

1959 – Bradenton Buckeyes





- 1960 – Bradenton Buckeyes**
- 1961 – Wilderness Wraiths**
- 1962 – South Starrucca Ainspans**
- 1963 – South Starrucca Ainspans**
- 1964 – Mimosa Mirthmakers**
- 1965 – Bergen Barflies**
- 1966 – South Starrucca Ainspans**
- 1967 – South Starrucca Ainspans**
- 1968 – Long Island Islanders**
- 1969 – Cleveland Spiders**

ZOO

The image features the word "ZOO" in a large, bold, white, sans-serif font with a thick black outline. The letters are set against a vibrant, abstract background composed of overlapping, organic shapes in shades of orange, yellow, and teal. The overall style is graphic and modern.

An aerial photograph of a baseball stadium, showing the green field, brown dirt base paths, and the surrounding seating areas. The stadium is filled with spectators. In the background, there are several tall stadium lights. Overlaid on the center of the field is a list of five baseball teams and their respective years.

1970 – Fortney Gators
1971 – Newmarket Eh's
1972 – Hyde Park VitaMen
1973 – Long Island Islanders
1974 – Norfolk Pilots

TCBA



1975 - 2020





1975 – Harbor Beach Combers
1976 – Hyde Park Vitamen
1977 – Shiloh Spurs
1978 – Greylock Gators
1979 – Rockford Patriots

TIME

8

0

S




1980 – Norfolk Pilots **1985 – Long Island Islanders**
1981 – Winnebago Indians **1986 – Meadowlands Spartans**
1982 – Winnebago Indians **1987 – Long Island Islanders**
1983 – Long Island Islanders **1988 – Scranton Spanish Flies**
1984 – Mimosa Mirthmakers **1989 – Beacon Braves**

1990s



1990 – Scranton Spanish Flies **1995 – Horseshoe Bay Polos**
1991 – Scranton Spanish Flies **1996 – Bethesda Bambinos**
1992 – Bethesda Bambinos **1997 – Rapidan Rapids**
1993 – Scranton Spanish Flies **1998 – Newark Eagles**
1994 – Scranton Spanish Flies **1999 – Newark Eagles**



2000's



2000 – Long Island Islanders

2001 – Farmington Rats

2002 – Scranton Spanish Flies

2003 – Horseshoe Bay Polos

2004 – Newark Eagles

2005 – Pennsylvania Keystones

2006 – Farmington Rats

2007 – Long Island Islanders

2008 – Horseshoe Bay Polos

2009 – Silver Spring Senators



the
2010s

DECADE IN REVIEW



2010 – Scranton Spanish Flies **2015- Scranton Spanish Flies**
2011 – Fargo Fungoes **2016 – Rochester Cheetahs**
2012 – Bethesda Bambinos **2017 – Beacon Braves**
2013 – Bethesda Bambinos **2018 – Bethesda Bambinos**
2014 – Newark Eagles **2019 – Long Island Islanders**



The End